



CONTACT INFORMATION

Mining Records Curator
Arizona Geological Survey
1520 West Adams St.
Phoenix, AZ 85007
602-771-1601
<http://www.azgs.az.gov>
inquiries@azgs.az.gov

The following file is part of the

Arizona Department of Mines and Mineral Resources Mining Collection

ACCESS STATEMENT

These digitized collections are accessible for purposes of education and research. We have indicated what we know about copyright and rights of privacy, publicity, or trademark. Due to the nature of archival collections, we are not always able to identify this information. We are eager to hear from any rights owners, so that we may obtain accurate information. Upon request, we will remove material from public view while we address a rights issue.

CONSTRAINTS STATEMENT

The Arizona Geological Survey does not claim to control all rights for all materials in its collection. These rights include, but are not limited to: copyright, privacy rights, and cultural protection rights. The User hereby assumes all responsibility for obtaining any rights to use the material in excess of "fair use."

The Survey makes no intellectual property claims to the products created by individual authors in the manuscript collections, except when the author deeded those rights to the Survey or when those authors were employed by the State of Arizona and created intellectual products as a function of their official duties. The Survey does maintain property rights to the physical and digital representations of the works.

QUALITY STATEMENT

The Arizona Geological Survey is not responsible for the accuracy of the records, information, or opinions that may be contained in the files. The Survey collects, catalogs, and archives data on mineral properties regardless of its views of the veracity or accuracy of those data.

Map 1 of 2

Assay Map
Vertical Projection Looking Westward
Signal-McCracken Mine,
(California Spray Chemical Co.)
Owens Mining District,
Mohave Co., Arizona

Graphic Scale In Feet

Original Survey by *Byrnes & Anderson* Sampling by *Robert J. Burgess*
Assaying by *R.V. Marshall* Values by *Robert J. Burgess*
Delimited by *E. Ross Haushalter* E.M. Reg. Prof. Eng. Cal. 257,
at *Mohave, Arizona*

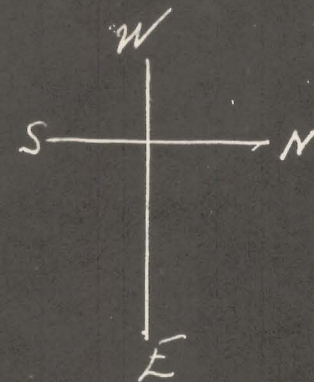
This Map Especially Prepared To Accompany Report By
Robert J. Burgess
Matheson, California

March 1942

Scale 1" = 20'

Magn. Samples 231 to 460 Incl.
and 83 to 101 By *Byrnes & Anderson*

Legend
100' Level - 2.66 - 16.75 - 6.55 - 5.45
250' Level - 2.66 - 16.75 - 6.55 - 5.45



Alt. North End Line
Signal S. End Line

250' Level

400' Level

500' Level

600' Level

100' Level South Drift
1025' - 98 Assays 7.00 Width
2.50 Oz. Silver 140% Lead
5.0% Zinc

250' Level South Drift
470 - 51 Samples 7.10 Width
4.60 Oz. Silver 140% Lead
6.3% Zinc

400' Level South Drift
190 - 20 Samples 5.75 Width
Trace of Silver Trace of Lead
2.75% Zinc

500' Level So. Drift
50' - 6 Samples 5.60 Width
Trace of Silver No Lead 140% Zn

Bateman South Drift
6550' - 47 Assays - 6.3 Width
800 Oz. Silver - 0.78% Lead 2.90% Zinc

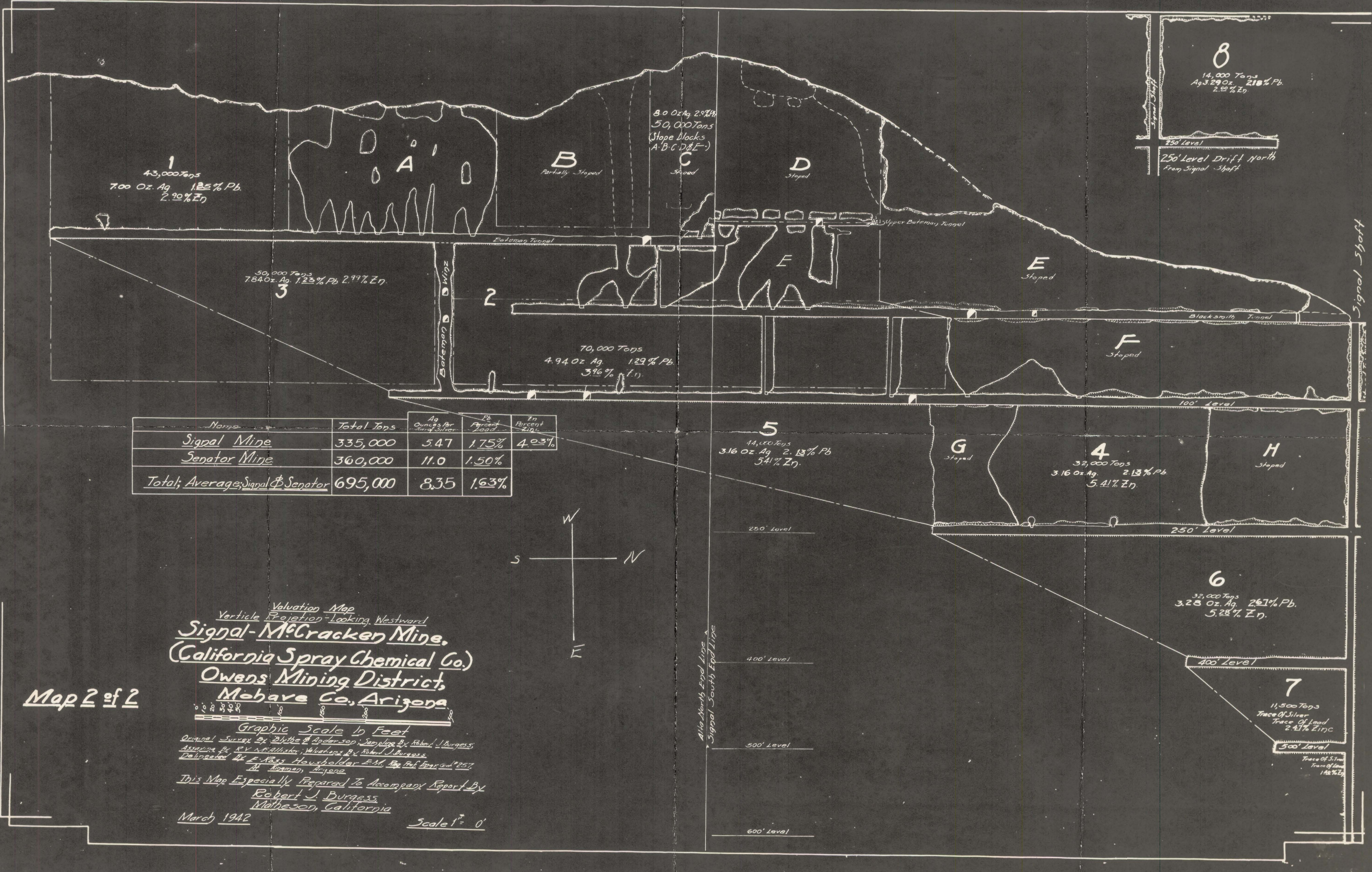
Bateman Mine 25% Zinc
100' Level South Drift
1025' - 98 Assays 7.00 Width
2.50 Oz. Silver 140% Lead
5.0% Zinc

250' Level Drift North
Even Signal Shaft
140 - 14 Samples 6.00 Width
3.29 Oz. Silver 2.18% Lead

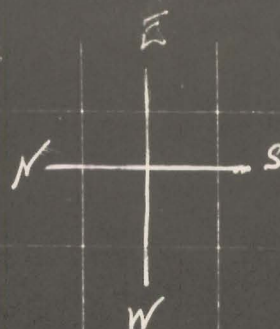
Blacksmith Tunnel

Slipper Bateman Tunnel

Signal Shaft



SIGNAL-McCRACKEN MINE
OWENS MINING DISTRICT
MOHAVE COUNTY, ARIZONA



T. 13 R. 14 W.

P. 15

T. 13

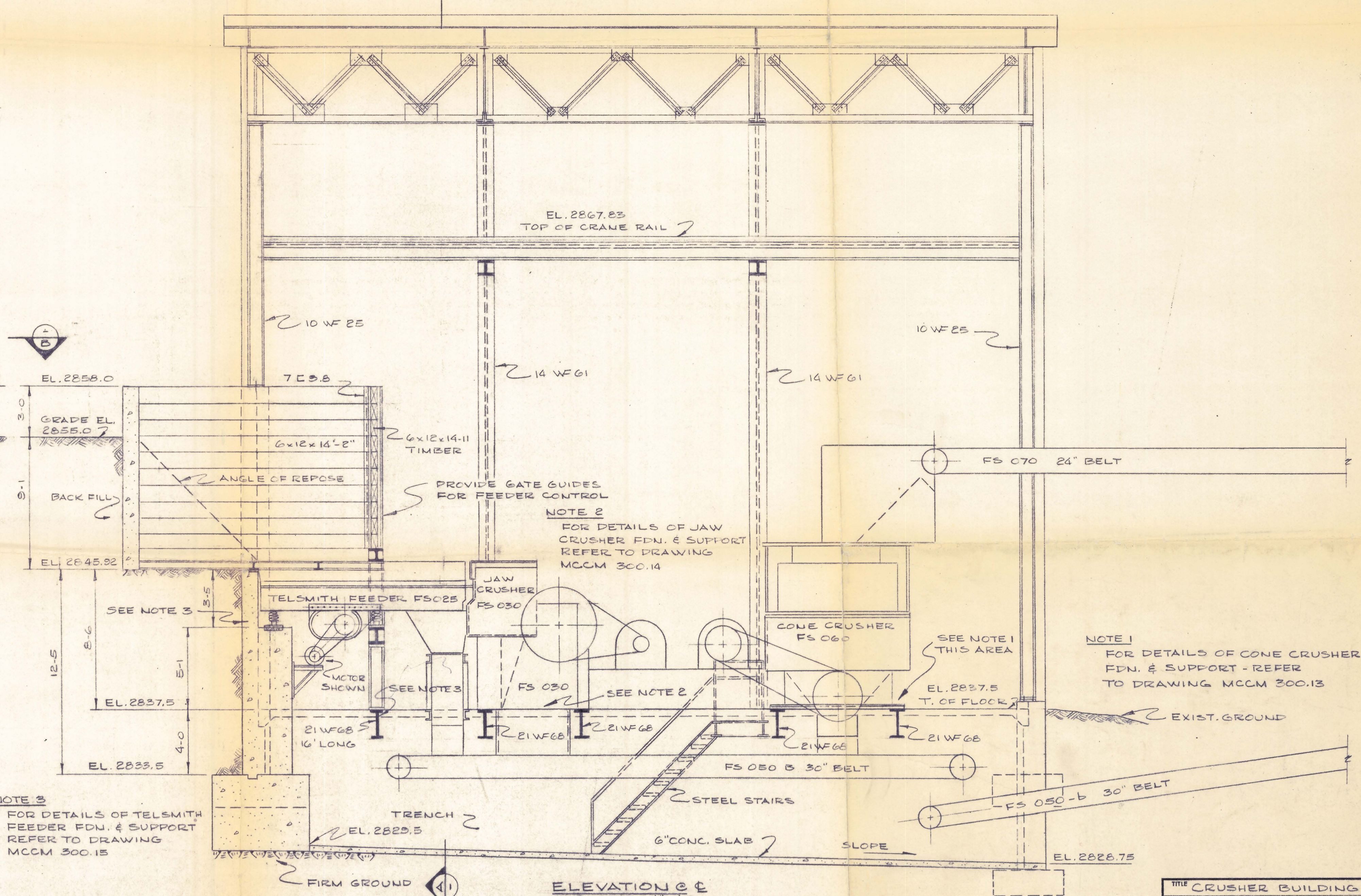
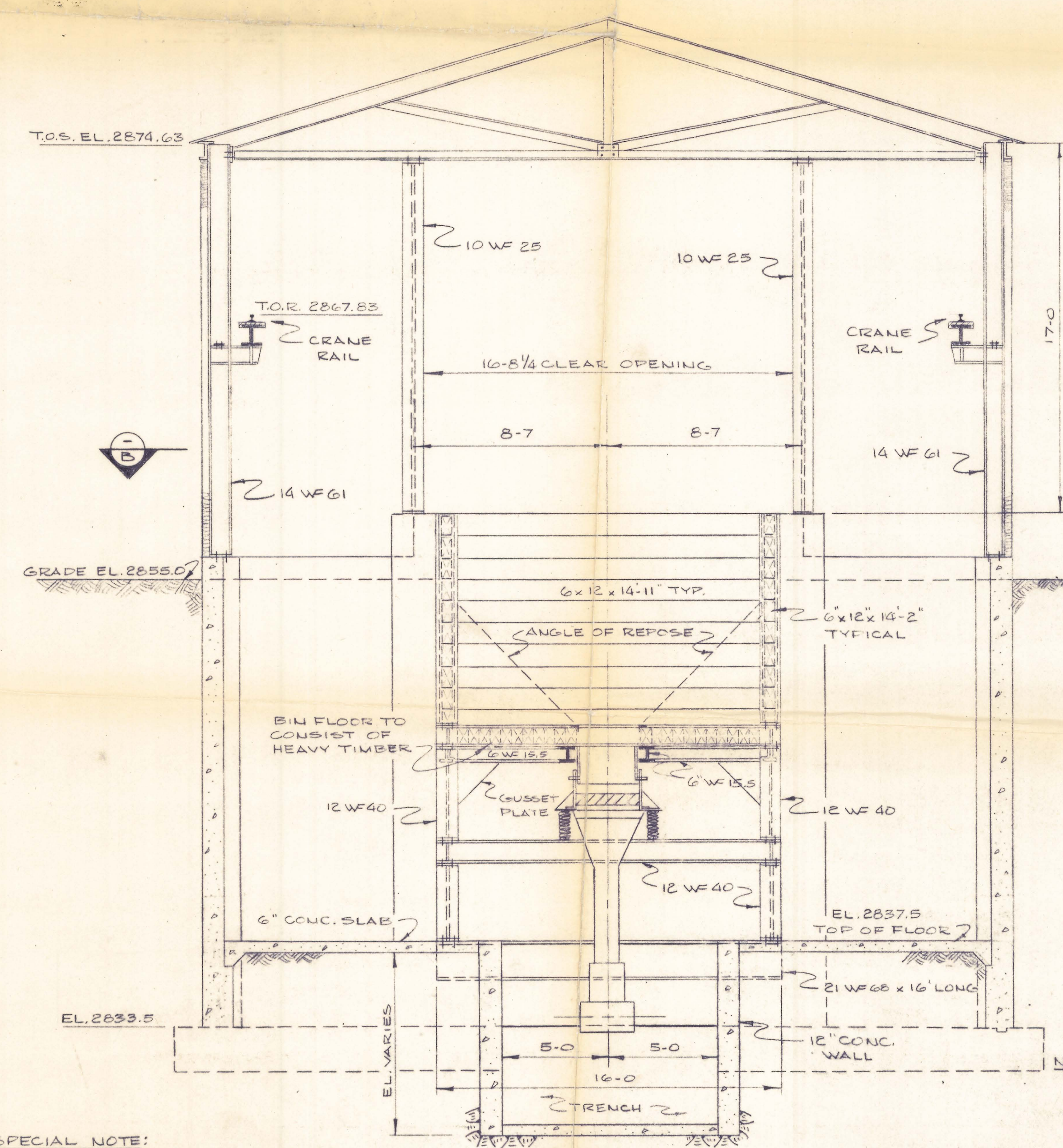
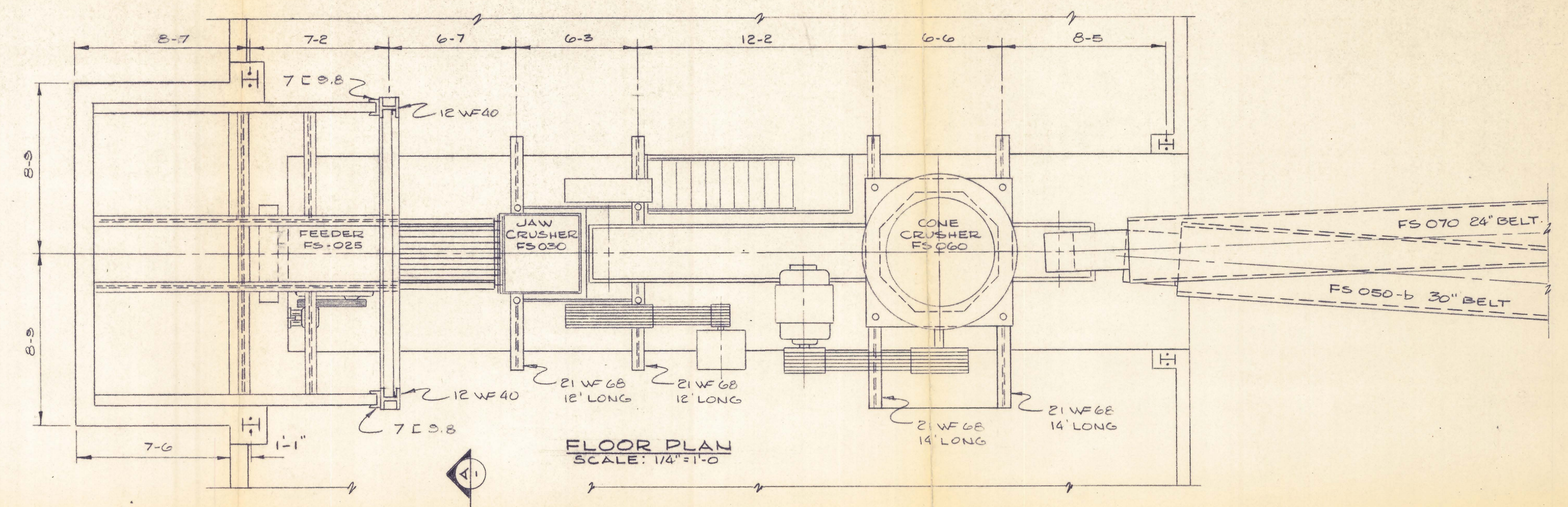
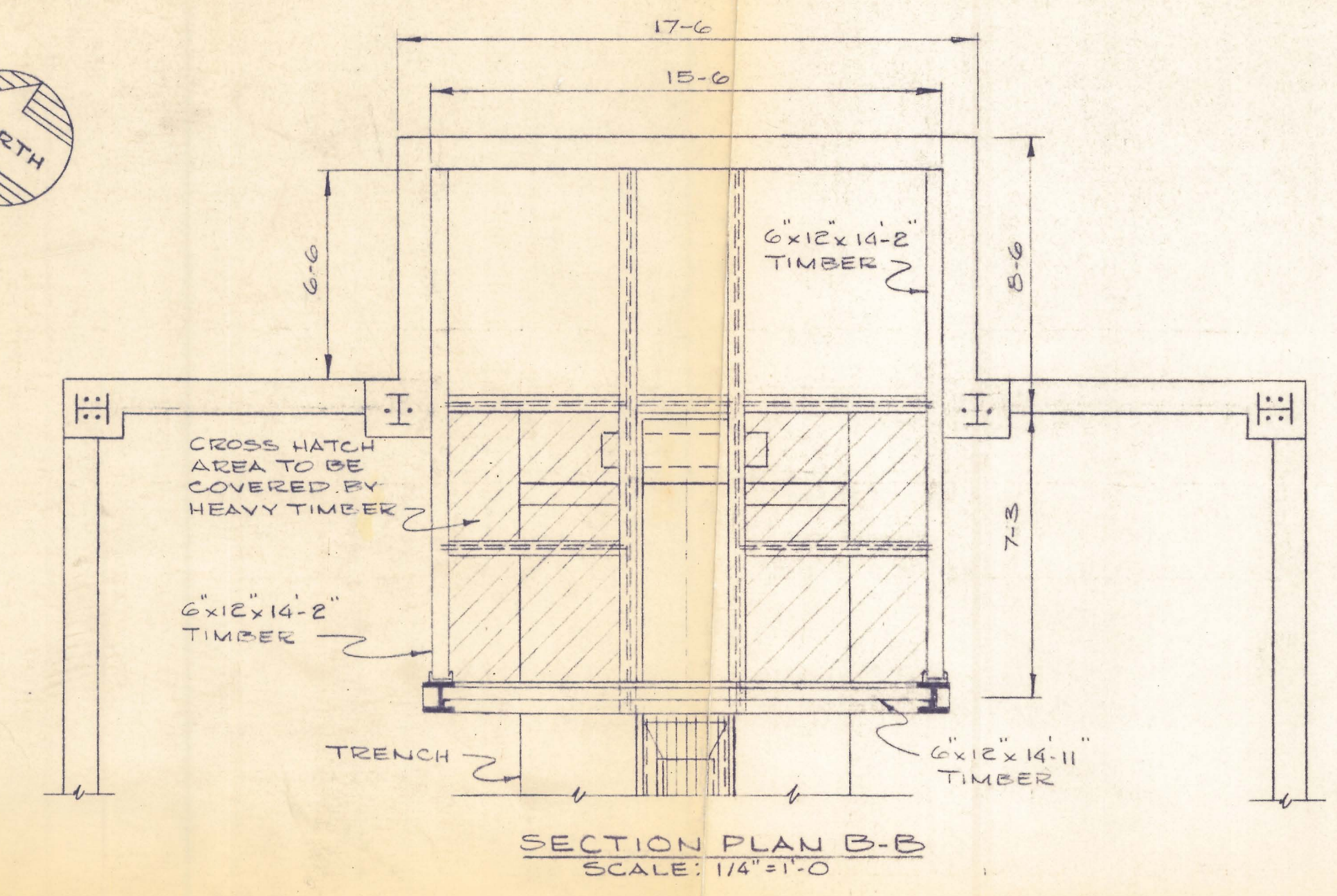


McCRACKEN PROJECT

Note: All materials, equipment cost and contract costs are included in materials classification

DESCRIPTION	1st MONTH LABOR	1st MONTH MATERIALS	2nd MONTH LABOR	2nd MONTH MATERIALS	3rd MONTH LABOR	3rd MONTH MATERIALS	4th MONTH LABOR	4th MONTH MATERIALS	5th MONTH LABOR	5th MONTH MATERIALS	6th MONTH LABOR	6th MONTH MATERIALS	7th MONTH LABOR	7th MONTH MATERIALS	8th MONTH LABOR	8th MONTH MATERIALS	TOTALS
Dismantle	12,761.15	9,221.00	7,169.16	2,900.00													32,051.31
Hauling			1,984.44	18,086.96	662.47	6,028.98											26,762.85
Erection	819.18	4,703.63	222.80	2,991.60	13,521.65	31,321.19	22,142.90	71,584.28	9,861.02	34,875.01	2,674.28	6,988.78	334.18	1,995.51			204,036.01
Power Plant		9,450.00		18,900.00		9,450.00	12,985.00	24,200.00		9,450.00		9,450.00		9,450.00			103,335.00
Road Building	2,196.00	5,430.60	2,520.00	8,472.15		1,613.25											20,232.00
Water Supply		100,900.00		24,000.00													124,900.00
Natural Gas Supply		40,000.00															40,000.00
Const. & Shop Equipment		6,873.20		1,894.00		6,112.80											30,697.00
Shop, Warehouse, Office							689.75		8,447.35	32,551.98	6,757.88	16,275.90	999.72	3,758.20		15,817.00	71,148.00
Trailer Housing		8,850.50		10,219.50		22,439.00		1,406.50						8,850.50		1,667.22	51,766.00
Permanent Housing										14,280.20		24,280.13		19,640.00		2,500.00	60,700.33
Monthly Rental Equipment		11,478.58		11,478.57		11,478.57		11,478.57		11,478.57		11,478.57		11,478.57			80,350.00
Supplies																	
Warehouse																4,940.00	4,940.00
Welding																6,082.00	6,082.00
Safety		650.00				3,500.00											5,950.00
Tailings Pond												1,800.00					5,000.00
TOTALS	15,776.33	197,557.51	11,896.40	98,942.78	14,184.12	91,943.79	35,817.65	108,669.35	18,308.37	102,635.76	9,432.16	70,273.38	1,333.90	87,011.78		4,167.22	867,950.50

MATERIAL LIST				
MARK	REQ'D.	DWG. OR PART NO.	DESCRIPTION	MATERIAL



SPECIAL NOTE:
FOR CONCRETE FOUNDATION & FOOTING DETAILS WITH REBAR REFER TO DRAWINGS:
MCCM 300.20
MCCM 300.21 (ISOMETRIC)

NOTE 3
FOR DETAILS OF TELSMITH FEEDER FDN. & SUPPORT REFER TO DRAWING MCCM 300.15

NOTE 2
FOR DETAILS OF JAW CRUSHER FDN. & SUPPORT REFER TO DRAWING MCCM 300.14

NOTE 1
FOR DETAILS OF CONE CRUSHER FDN. & SUPPORT - REFER TO DRAWING MCCM 300.13

No. DATE		REVISION	THIS DRAWING IS THE PROPERTY OF LAKESIDE ENGINEERING COMPANY, INC. AND MUST NOT BE COPIED OR DUPLICATED.		DESIGN: J.L. DRAWN: L.M. CHECKED: APPROVED: SCALE: AS NOTED	Lakeside Engineering Company, Inc. SALT LAKE CITY, UTAH		DATE: 18 DEC 68	REFERENCE: 300 SERIES	
			DIMENSION TOLERANCES: DECIMAL: ± .010 FRACTION: ± 1/64							

TITLE: CRUSHER BUILDING	
ASSEMBLY DRAWING	
MCCRACKEN MINE	
MOHAVE COUNTY, ARIZONA	
DWG. NO.	MCCM 300.12