



CONTACT INFORMATION

Mining Records Curator
Arizona Geological Survey
1520 West Adams St.
Phoenix, AZ 85007
602-771-1601
<http://www.azgs.az.gov>
inquiries@azgs.az.gov

The following file is part of the

Arizona Department of Mines and Mineral Resources Mining Collection

ACCESS STATEMENT

These digitized collections are accessible for purposes of education and research. We have indicated what we know about copyright and rights of privacy, publicity, or trademark. Due to the nature of archival collections, we are not always able to identify this information. We are eager to hear from any rights owners, so that we may obtain accurate information. Upon request, we will remove material from public view while we address a rights issue.

CONSTRAINTS STATEMENT

The Arizona Geological Survey does not claim to control all rights for all materials in its collection. These rights include, but are not limited to: copyright, privacy rights, and cultural protection rights. The User hereby assumes all responsibility for obtaining any rights to use the material in excess of "fair use."

The Survey makes no intellectual property claims to the products created by individual authors in the manuscript collections, except when the author deeded those rights to the Survey or when those authors were employed by the State of Arizona and created intellectual products as a function of their official duties. The Survey does maintain property rights to the physical and digital representations of the works.

QUALITY STATEMENT

The Arizona Geological Survey is not responsible for the accuracy of the records, information, or opinions that may be contained in the files. The Survey collects, catalogs, and archives data on mineral properties regardless of its views of the veracity or accuracy of those data.

05/29/92

ARIZONA DEPARTMENT OF MINES AND MINERAL RESOURCES FILE DATA

PRIMARY NAME: MAXIE

ALTERNATE NAMES:

LA PAZ COUNTY MILS NUMBER: 834

LOCATION: TOWNSHIP 3 S RANGE 23 W SECTION 36 QUARTER NW
LATITUDE: N 33DEG 07MIN 35SEC LONGITUDE: W 114DEG 35MIN 21SEC
TOPO MAP NAME: HIDDEN VALLEY - 7.5 MIN.

CURRENT STATUS: EXP PROSPECT

COMMODITY:

SILVER
BARIUM

BIBLIOGRAPHY:

ADMMR MAXIE FILE

VICTOR H. VERITY
LEO N. SMITH
LARRY D. CLARK
PATRICIA G. MUNGER

VERITY, SMITH & CLARK, P. C.
ATTORNEYS AT LAW
902 TRANSAMERICA BUILDING
177 NORTH CHURCH AVENUE
TUCSON, ARIZONA 85701

43990
129408
TELEPHONE
(602) 623-6961

mapie (file)

bga

October 27, 1983

Arizona State Office
Bureau of Land Management
United States Department
of the Interior
2400 Valley Bank Center
Phoenix, Arizona 85073

Re: Pop #5-A Claim
A MC No. 129408

Gentlemen:

Enclosed for filing is a copy of the official record of an Affidavit of Labor Performed and Improvements Made for the assessment year ending September 1, 1983 and pertaining to the above-referenced claim. This Affidavit is filed on behalf of the owner of the claim, The New Jersey Zinc Exploration Company, and the lessee, Orbex Resources, Inc., pursuant to Subpart 3833, 43 C.F.R. Please file a copy of the enclosed Affidavit in the appropriate BLM Serial Number file.

Please note in your records that the current address of the owner, The New Jersey Zinc Exploration Company, is as follows:

The New Jersey Zinc Exploration Company
One Commerce Place
Nashville, Tennessee 37239
Attn: Dr. W.T. Hill, President

and that the address of the lessee, Orbex Resources, Inc., is as follows:

Orbex Resources, Inc.
410-675 W. Hastings Street
Vancouver, British Columbia
CANADA V6B 1N2.

RECEIVED
B.L.M. AZ STATE OFFICE

OCT 31 1983

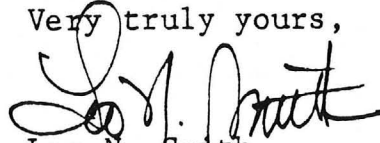
07.45 A.M.
PHOENIX, ARIZONA

eau 2 I Management
October 27, 1983
Page 2

It would be appreciated if copies of all notices concerning this claim were forwarded to both the owner and the lessee at the above addresses.

Thank you for your assistance.

Very truly yours,



Leo N. Smith

LNS:lp
Enclosure

CERTIFIED MAIL NO. 8585768
RETURN RECEIPT REQUESTED

RECEIVED
B.L.M. AZ STATE OFFICE

OCT 31 1983

07.45 A.M.
PHOENIX, ARIZONA

MAXIE AREA
SILVER DISTRICT
YUMA COUNTY, ARIZONA

The Maxie area is located in the western one-half of sections 24, 25 and 36, and the eastern one-half of sections 23, 26 and 35, Township 3 South, Range 23 West, in the southern Trigo Mountains of Yuma County, Arizona. Access is gained to this area by driving north for approximately 16 miles on the Red Cloud road to the Red Cloud mine. The area is about two miles northeast of the Red Cloud mine on an improved road.

Assessment work for 1982 was accomplished by geologically mapping the entire area. The attached map shows the geology in this area. The work was performed during the months January through September, 1982. This claim group consists of Maxie II, IIA, III, IIIA, IV - VII and Maxie 8 through 26.

The rocks of the Maxie area include late Cretaceous migmatites, mid-Tertiary volcanics and Quaternary alluvium. The migmatites are probably a mixing of metamorphosed mid-Mesozoic sediments and the late Cretaceous granodiorite found in the district.

RECEIVED
B.L.M. AZ STATE OFFICE
DEC 17 1982
07.45 A.M.
PHOENIX, ARIZONA

The structure of this area is fairly simple when compared to the rest of the district. The major structure is a basically north trending fault which dips fairly steeply to the west. This fault is the western fault on a basically north-south trending horst. It is hypothesized that this is a late Miocene Basin and Range feature. Veining is restricted to this fault and its minor offshoots.


Another major structure zone in the area is the basic east-west trending faults in the NW $\frac{1}{4}$ of section 36. Here two faults cause a wedge of volcanics to be located between migmatite outcrops as can be seen on the map. No veining occurs in these faults. The age of these faults is not known, and may be pre-, syn-, or post Basin and Range faulting.

Veining in the area is mainly quartz, calcite and barite. Pinching and swelling occurs, and the vein may be from 0 to 20 feet wide. Silicified fault surfaces with slickensides indicate the normal nature of the faulting. Silicified breccia clasts are common.

RECEIVED
B.L.M. AZ STATE OFFICE

DEC 17 1982

07.45 A.M.
PHOENIX, ARIZONA



David Pietenpol



John E. Teet

DP:kk

David Pietenpol
2841 A East Loretta
Tucson, Arizona 85716

Professional Background:

B. S. in Geology, Dennison University;

M. S. Candidate, University of Arizona, with two

years as a Field Exploration Geologist

John E. Teet
2621 East 4th Street
Tucson, Arizona 85716

Professional Background:

B. S. in Geology, Michigan State University,

with 30 years experience in minerals exploration.

RECEIVED
B.L.M. AZ STATE OFFICE

DEC 17 1982

07.45 A.M.
PHOENIX, ARIZONA

MAXIE 10

MAXIE 9

MAXIE 8

23 24
26 25

MAXIE 11

MAXIE 12

MAXIE 13

MAXIE 14

MAXIE VII

MAXIE VI

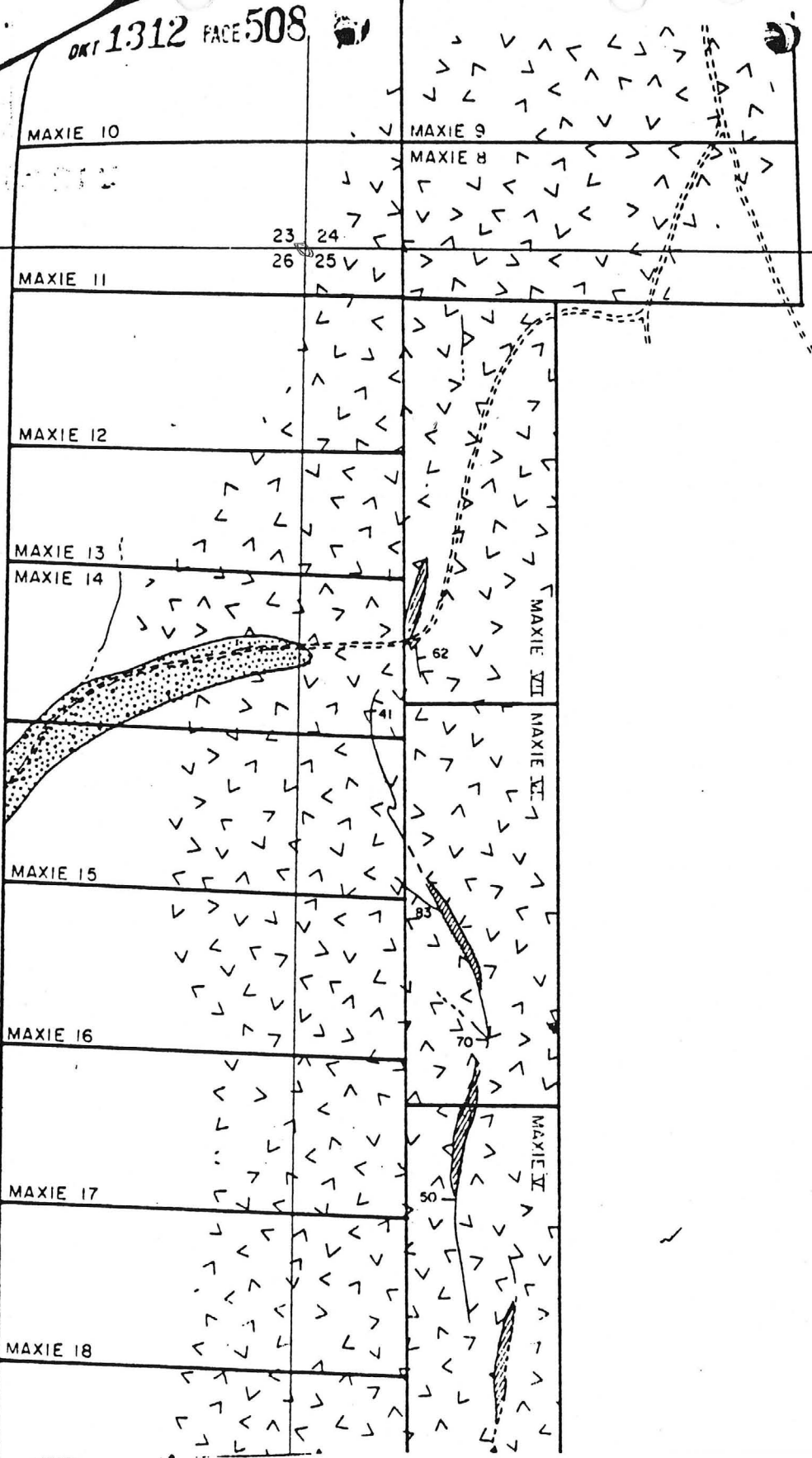
MAXIE 15

MAXIE 16

MAXIE 17

MAXIE V

MAXIE 18



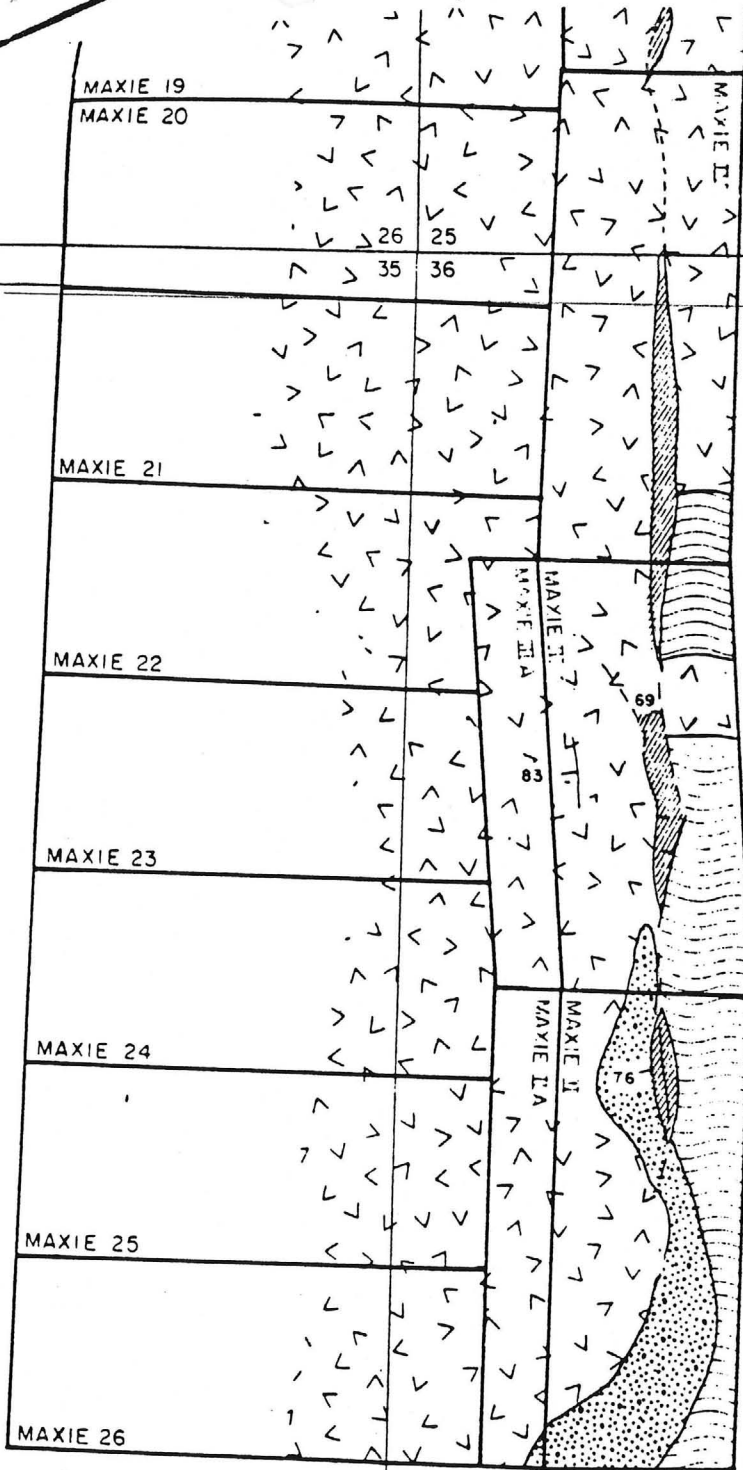
North half
Map 2

RECEIVED
B.L.M. AZ STATE OFFICE


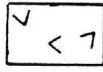
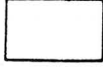



DEC 17 1982

07 15 AM

DKT 1312 PAGE 507



LEGEND

-  ALLUVIUM
-  TERTIARY VOLCANICS
-  JURASSIC P GRANODIORITE
-  PRE-TERTIARY METAMORPHICS
-  LARGER VEIN
-  SMALLER VEIN

T 3 S, R 23 W

Map 2 - South half

RECEIVED
B.L.M. AZ STATE OFFICE

DEC 17 1982

07.45 A.M.
PHOENIX, ARIZONA

THE NEW JERSEY ZINC COMPANY TUCSON, ARIZONA		
DATE	SCALE	DRAFTER
10/82	1" = 600'	C.S.

SILVER DISTRICT
THE MAXIE AREA

I hereby certify that the within instrument
was filed and recorded at the request of

The New Jersey Zinc Co.
1982 DEC 17 PM 12 2

Docket 1312
Page 503-509

Witness my hand and official seal the day
and year aforesaid.

GLENYS E. SCHMITT

Glenys E. Schmitt
County Recorder
Deputy Recorder

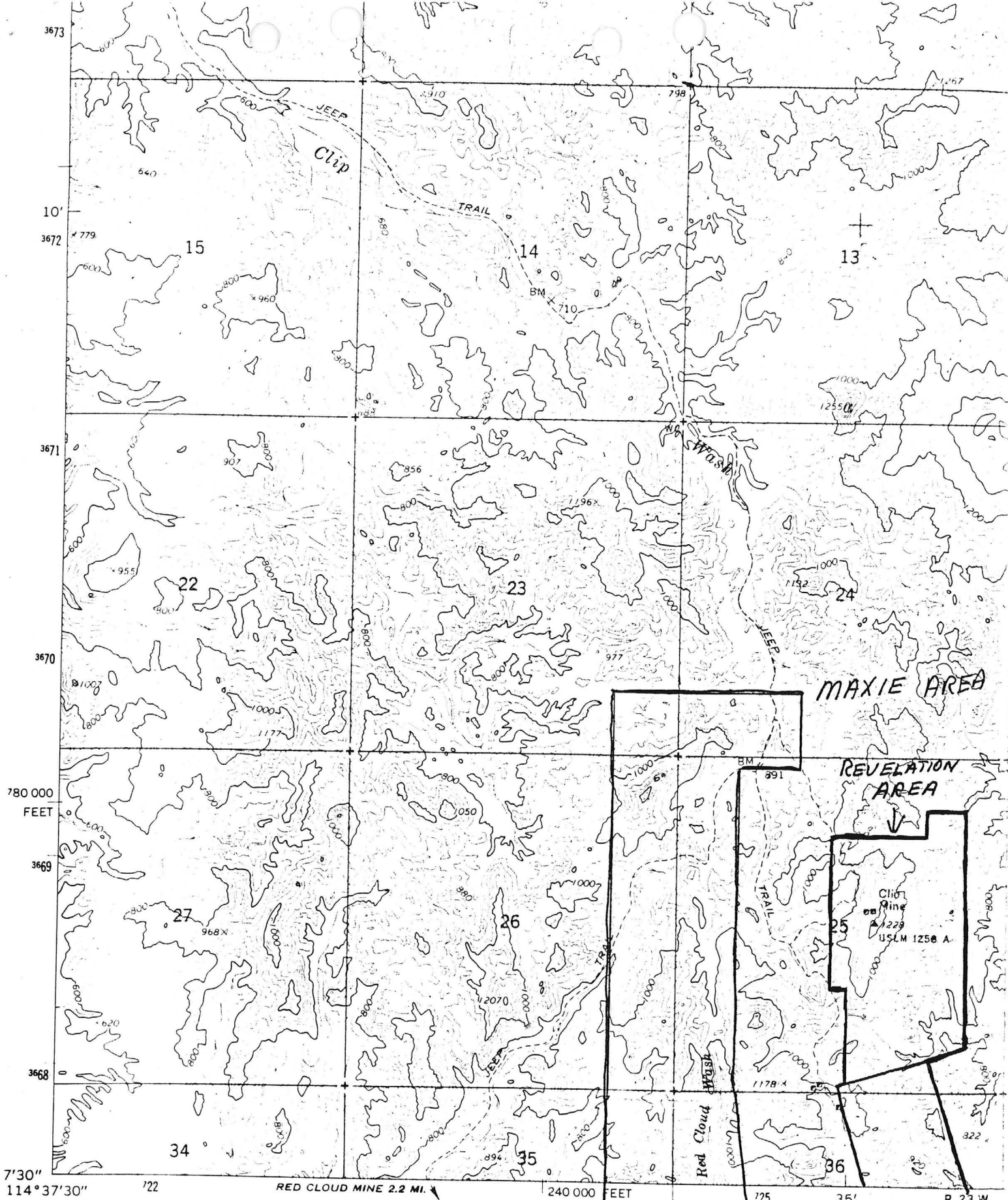
INDEXED

*Pima Playa Building - Suite
2030 East Broadway
Tucson, Az. 85710*

RECEIVED
B.L.M. AZ STATE OFFICE

DEC 17 1982

07.45 A.M.
PHOENIX, ARIZONA

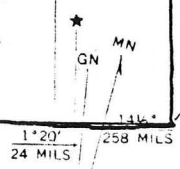


Mapped, edited, and published by the Geological Survey
 Control by USGS and USC&GS

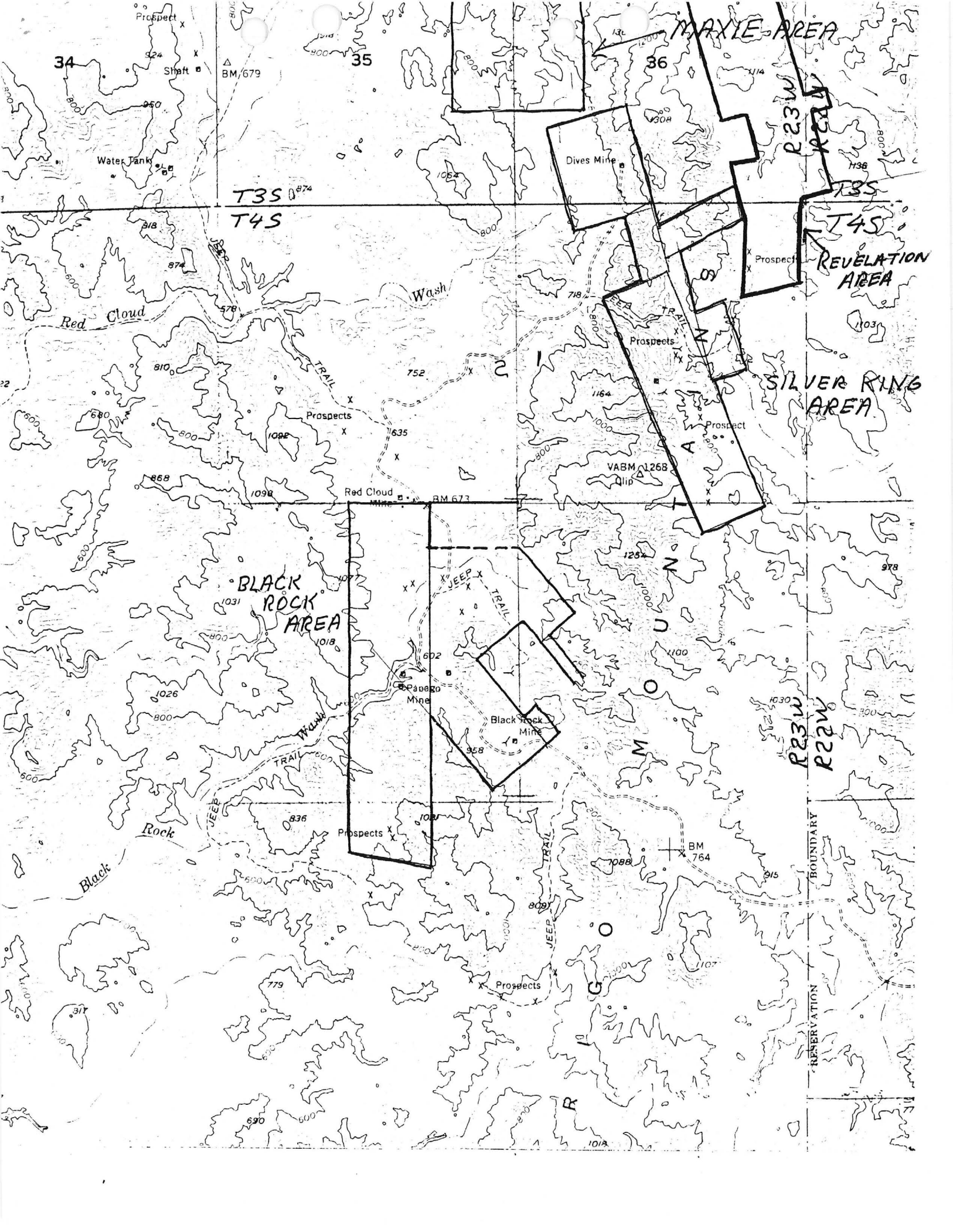
Topography by photogrammetric methods from aerial
 photographs taken 1962. Field checked 1965

Polyconic projection. 1927 North American datum
 10,000-foot grid based on Arizona coordinate system, west zone
 1000-meter Universal Transverse Mercator grid ticks.

T35 R23W



1000
 FEET



43990
129408

TELEPHONE
(602) 623-6961

VERITY, SMITH & CLARK, P. C.
ATTORNEYS AT LAW
902 TRANSAMERICA BUILDING
177 NORTH CHURCH AVENUE
TUCSON, ARIZONA 85701

VICTOR H. VERITY
LEO N. SMITH
LARRY D. CLARK
PATRICIA G. MUNGER

Maxie (file) bsw

October 27, 1983

Arizona State Office
Bureau of Land Management
United States Department
of the Interior
2400 Valley Bank Center
Phoenix, Arizona 85073

Re: Pop #5-A Claim
A MC No. 129408

Gentlemen:

Enclosed for filing is a copy of the official record of an Affidavit of Labor Performed and Improvements Made for the assessment year ending September 1, 1983 and pertaining to the above-referenced claim. This Affidavit is filed on behalf of the owner of the claim, The New Jersey Zinc Exploration Company, and the lessee, Orbex Resources, Inc., pursuant to Subpart 3833, 43 C.F.R. Please file a copy of the enclosed Affidavit in the appropriate BLM Serial Number file.

Please note in your records that the current address of the owner, The New Jersey Zinc Exploration Company, is as follows:

The New Jersey Zinc Exploration Company
One Commerce Place
Nashville, Tennessee 37239
Attn: Dr. W.T. Hill, President

and that the address of the lessee, Orbex Resources, Inc., is as follows:

Orbex Resources, Inc.
410-675 W. Hastings Street
Vancouver, British Columbia
CANADA V6B 1N2.

RECEIVED
B.L.M. AZ STATE OFFICE
OCT 31 1983
07.45 A.M.
PHOENIX, ARIZONA

It would be appreciated if copies of all notices concerning this claim were forwarded to both the owner and the lessee at the above addresses.

Thank you for your assistance.

Very truly yours,



Leo N. Smith

LNS:lp
Enclosure

CERTIFIED MAIL NO. 8585768
RETURN RECEIPT REQUESTED

RECEIVED
B.L.M. AZ STATE OFFICE

OCT 31 1983

07.45 A.M.
PHOENIX, ARIZONA

MAXIE AREA
SILVER DISTRICT
YUMA COUNTY, ARIZONA

The Maxie area is located in the western one-half of sections 24, 25 and 36, and the eastern one-half of sections 23, 26 and 35, Township 3 South, Range 23 West, in the southern Trigo Mountains of Yuma County, Arizona. Access is gained to this area by driving north for approximately 16 miles on the Red Cloud road to the Red Cloud mine. The area is about two miles northeast of the Red Cloud mine on an improved road.

Assessment work for 1982 was accomplished by geologically mapping the entire area. The attached map shows the geology in this area. The work was performed during the months January through September, 1982. This claim group consists of Maxie II, IIA, III, IIIA, IV - VII and Maxie 8 through 26.

The rocks of the Maxie area include late Cretaceous migmatites, mid-Tertiary volcanics and Quaternary alluvium. The migmatites are probably a mixing of metamorphosed mid-Mesozoic sediments and the late Cretaceous granodiorite found in the district.

RECEIVED
B.L.M. AZ STATE OFFICE
DEC 17 1982
07.45 A.M.
PHOENIX, ARIZONA

The structure of this area is fairly simple when compared to the rest of the district. The major structure is a basically north trending fault which dips fairly steeply to the west. This fault is the western fault on a basically north-south trending horst. It is hypothesized that this is a late Miocene Basin and Range feature. Veining is restricted to this fault and its minor offshoots.

Another major structure zone in the area is the basic east-west trending faults in the NW $\frac{1}{4}$ of section 36. Here two faults cause a wedge of volcanics to be located between migmatite outcrops as can be seen on the map. No veining occurs in these faults. The age of these faults is not known, and may be pre-, syn-, or post Basin and Range faulting.

Veining in the area is mainly quartz, calcite and barite. Pinching and swelling occurs, and the vein may be from 0 to 20 feet wide. Silicified fault surfaces with slickensides indicate the normal nature of the faulting. Silicified breccia clasts are common.

RECEIVED
B.L.M. AZ STATE OFFICE

DEC 17 1982

07.45 A.M.
PHOENIX, ARIZONA



David Pietenpol



John E. Teet

DP:kk

David Pietenpol
2841 A East Loretta
Tucson, Arizona 85716

Professional Background:

B. S. in Geology, Dennison University;

M. S. Candidate, University of Arizona, with two
years as a Field Exploration Geologist

John E. Teet
2621 East 4th Street
Tucson, Arizona 85716

Professional Background:

B. S. in Geology, Michigan State University,
with 30 years experience in minerals exploration.

RECEIVED
B.L.M. AZ STATE OFFICE

DEC 17 1982

07.45 A.M.
PHOENIX, ARIZONA

MAXIE 10

MAXIE 9

MAXIE 8

23

24

26

25

MAXIE 11

MAXIE 12

MAXIE 13

MAXIE 14

MAXIE 15

MAXIE 16

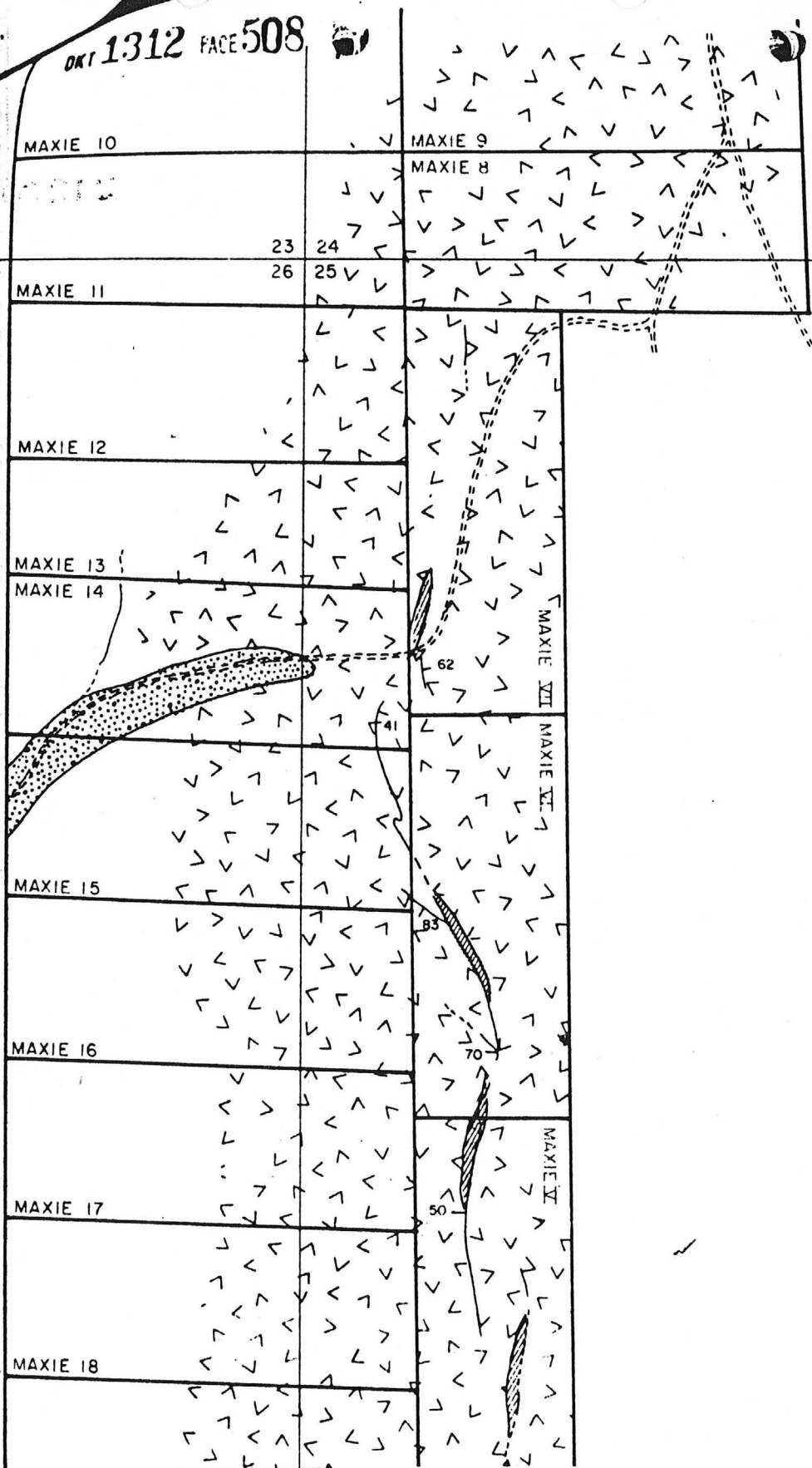
MAXIE 17

MAXIE 18

MAXIE VII

MAXIE VI

MAXIE V



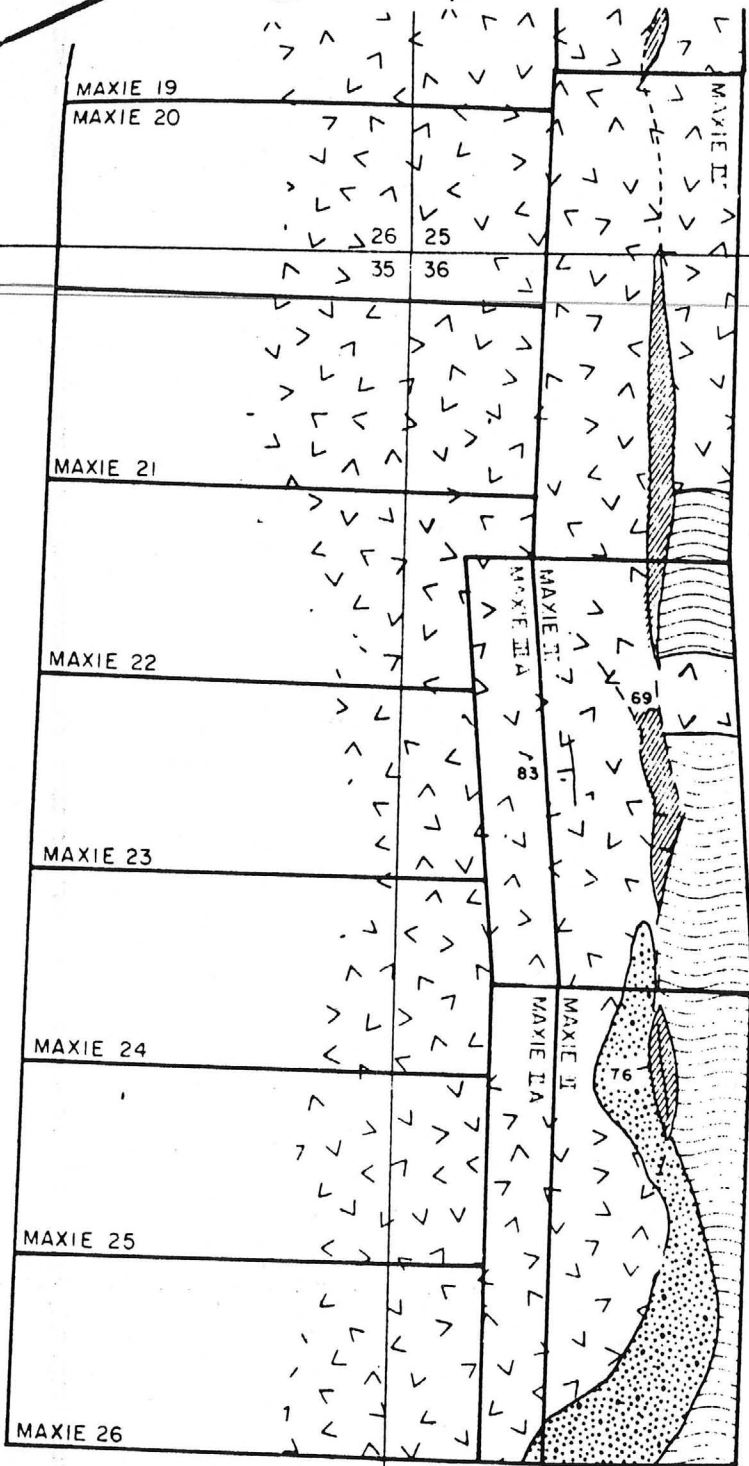
North half
Map 2

RECEIVED
B.L.M. AZ STATE OFFICE


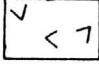
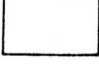



DEC 17 1982

07 45 A M

DKT 1312 PAGE 507



LEGEND

-  ALLUVIUM
-  TERTIARY VOLCANICS
-  JURASSIC GRANODIORITE
-  PRE-TERTIARY METAMORPHICS
-  LARGER VEIN
-  SMALLER VEIN

T 3 S, R 23 W

RECEIVED
 B.L.M. AZ STATE OFFICE
 DEC 17 1982
 07.45 A.M.
 PHOENIX, ARIZONA

Map 2 - South half

THE NEW JERSEY ZINC COMPANY TUCSON, ARIZONA			SILVER DISTRICT THE MAXIE AREA
DATE	SCALE	DRAFTER	
10/82	1" = 600'	C.S.	

State of Arizona
County of Yuma

ss 24270

I hereby certify that the within instrument
was filed and recorded at the request of

The New Jersey Zinc Exple

1982 DEC 70 PM 12 29

Docket 1312

Page 503-509

Witness my hand and official seal the day
and year aforesaid.

GLENYS E. SCHMITT

Glenys E. Schmitt
County Recorder
Deputy Recorder

INDEXED

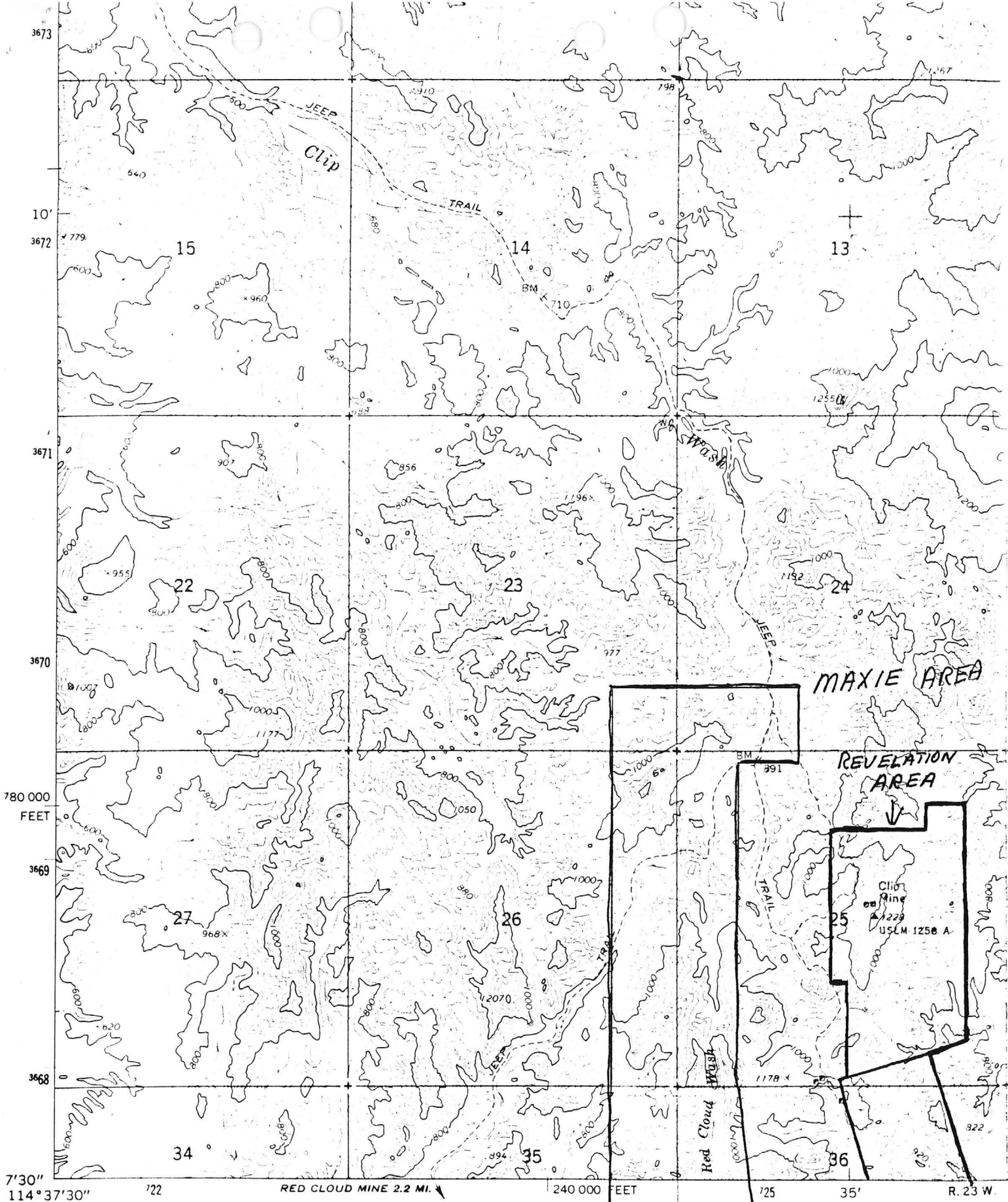
6.

*Pima Plaza Building - Suite
2030 East Broadway
Tucson, Az. 85719*

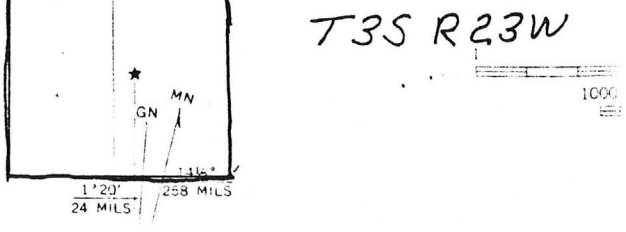
RECEIVED
B.L.M. AZ STATE OFFICE

DEC 17 1982

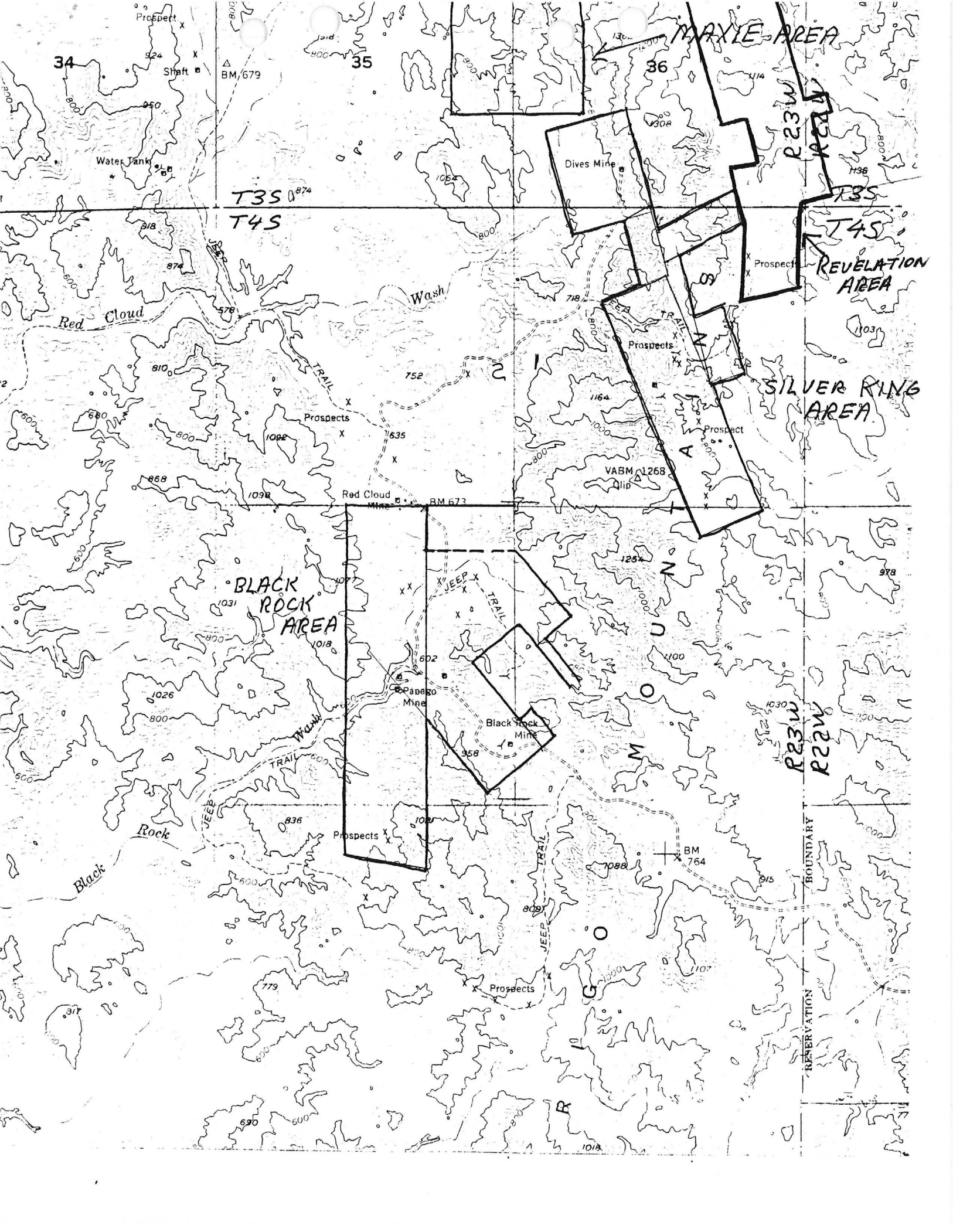
07.45 A.M.
PHOENIX, ARIZONA



Mapped, edited, and published by the Geological Survey
 Control by USGS and USC&GS
 Topography by photogrammetric methods from aerial
 photographs taken 1962. Field checked 1965
 Polyconic projection. 1927 North American datum
 10,000-foot grid based on Arizona coordinate system, west zone
 1000-meter Universal Transverse Mercator grid ticks.



T35 R23W



34

35

36

T35

T45

T35

T45

REVELATION AREA

SILVER RING AREA

BLACK ROCK AREA

MOUNTAIN

R23W
R22W

RESERVATION BOUNDARY

Prospect X

Shaft

BM 679

Water Tank

Dives Mine

Wash

Red Cloud

Prospects

Prospects

VABM 1268
Qlip

Red Cloud Mine

BM 673

1031

1026

622

Papago Mine

Black Rock Mine

Black Rock

Prospects

BM 764

Prospects

1088

1017

779

809

1018