



## **CONTACT INFORMATION**

Mining Records Curator  
Arizona Geological Survey  
1520 West Adams St.  
Phoenix, AZ 85007  
602-771-1601  
<http://www.azgs.az.gov>  
[inquiries@azgs.az.gov](mailto:inquiries@azgs.az.gov)

The following file is part of the

Arizona Department of Mines and Mineral Resources Mining Collection

## **ACCESS STATEMENT**

These digitized collections are accessible for purposes of education and research. We have indicated what we know about copyright and rights of privacy, publicity, or trademark. Due to the nature of archival collections, we are not always able to identify this information. We are eager to hear from any rights owners, so that we may obtain accurate information. Upon request, we will remove material from public view while we address a rights issue.

## **CONSTRAINTS STATEMENT**

The Arizona Geological Survey does not claim to control all rights for all materials in its collection. These rights include, but are not limited to: copyright, privacy rights, and cultural protection rights. The User hereby assumes all responsibility for obtaining any rights to use the material in excess of "fair use."

The Survey makes no intellectual property claims to the products created by individual authors in the manuscript collections, except when the author deeded those rights to the Survey or when those authors were employed by the State of Arizona and created intellectual products as a function of their official duties. The Survey does maintain property rights to the physical and digital representations of the works.

## **QUALITY STATEMENT**

The Arizona Geological Survey is not responsible for the accuracy of the records, information, or opinions that may be contained in the files. The Survey collects, catalogs, and archives data on mineral properties regardless of its views of the veracity or accuracy of those data.

PRINTED: 01/31/2002

ARIZONA DEPARTMENT OF MINES AND MINERAL RESOURCES AZMILS DATA

PRIMARY NAME: MARGURIET & STEPHENS CLAIMS

ALTERNATE NAMES:

MARICOPA COUNTY MILS NUMBER: 517

LOCATION: TOWNSHIP 5 N RANGE 5 E SECTION 16 QUARTER C  
LATITUDE: N 33DEG 47MIN 15SEC LONGITUDE: W 111DEG 50MIN 50SEC  
TOPO MAP NAME: WILDCAT HILL - 7.5 MIN

CURRENT STATUS: UNKNOWN

COMMODITY:  
GEMSTONE ONYX

BIBLIOGRAPHY:  
ADMMR MARGURIET & STEPHENS CLAIMS FILE  
AZBM BULL 125, P. 107-8  
ADMMR ONYX COMMODITY FILE

SEE ABM Bull 125 p 107 & 108

ARIZONA ONYX PRODUCTS CO. INC.  
Now Margurite & Stephens Claims

~~1 Sketch plat showing survey of  
PHOENIX ONYX & PHOENIX ONYX No. 2 LODES.  
Magazine Mining Dist., Maricopa Co. 7-1-27.~~

1 Sketch plat showing survey of that  
portion of Sect. 16, T5N, R5E, held  
under State Land Lease. 6-28-29-1927.

1 Sketch plat showing survey of the  
MARGURITE & STEPHENS lodes. 9-28-1925.

1 MAP of Township No. 5 N, Range No. 5 E  
GSRM, Arizona. 9-4-20.

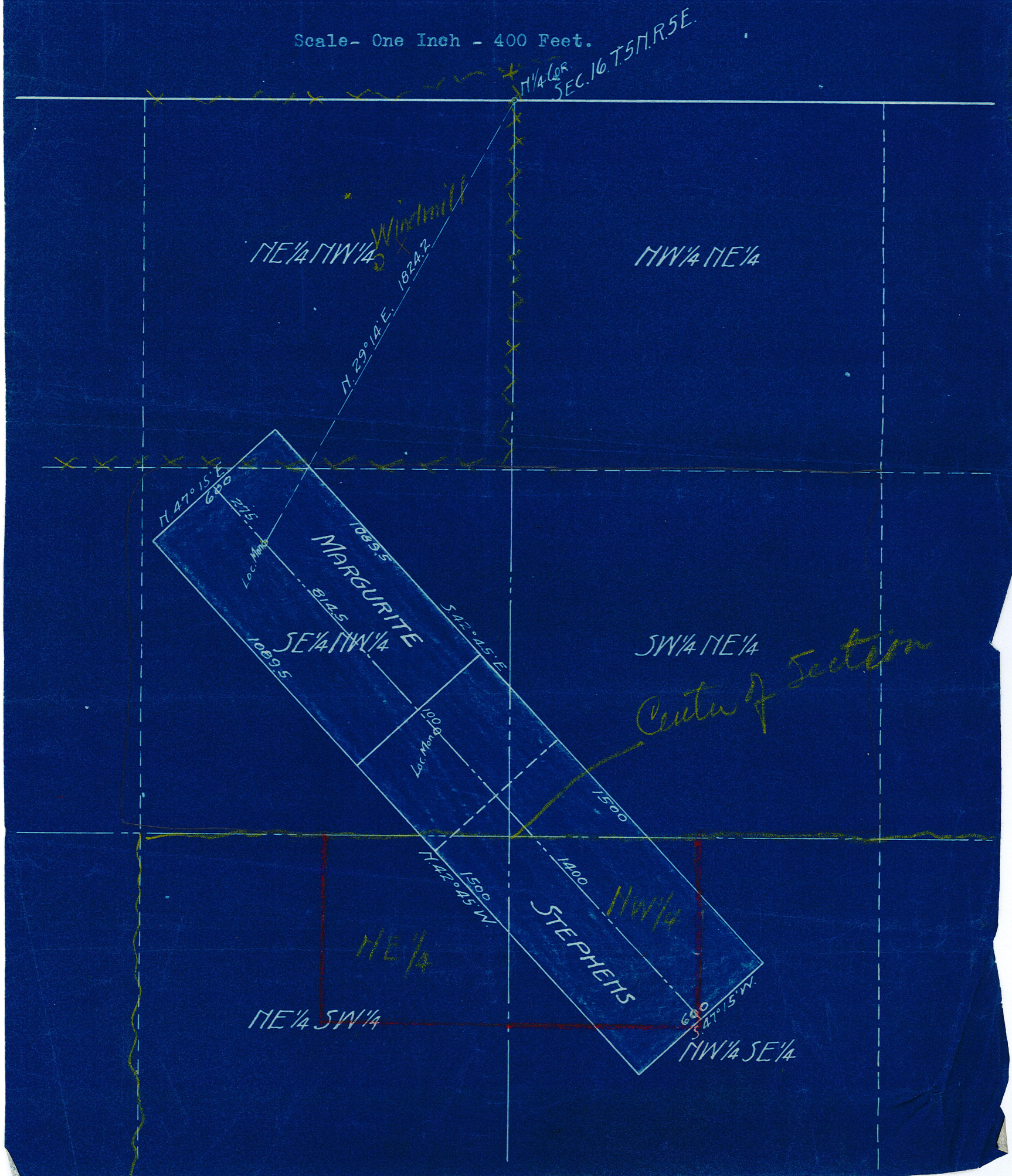
1 Possible arrangement of crusher,  
elevator & screens for handling 5 tons/hr.  
of onyx. 11/25/39.

Sketch plat showing survey of the MARGURITE and STEPHENS lodes  
in conflict with certain fractional subdivisions of Section 16,  
T. 5 N. R. 5 E. G&SRB&M. Maricopa County, Arizona.

Surveyed Sept. 28th. 1925: For: The Phoenix Onyx Company,  
By: Harry E. Jones,

54/76

Scale- One Inch - 400 Feet.

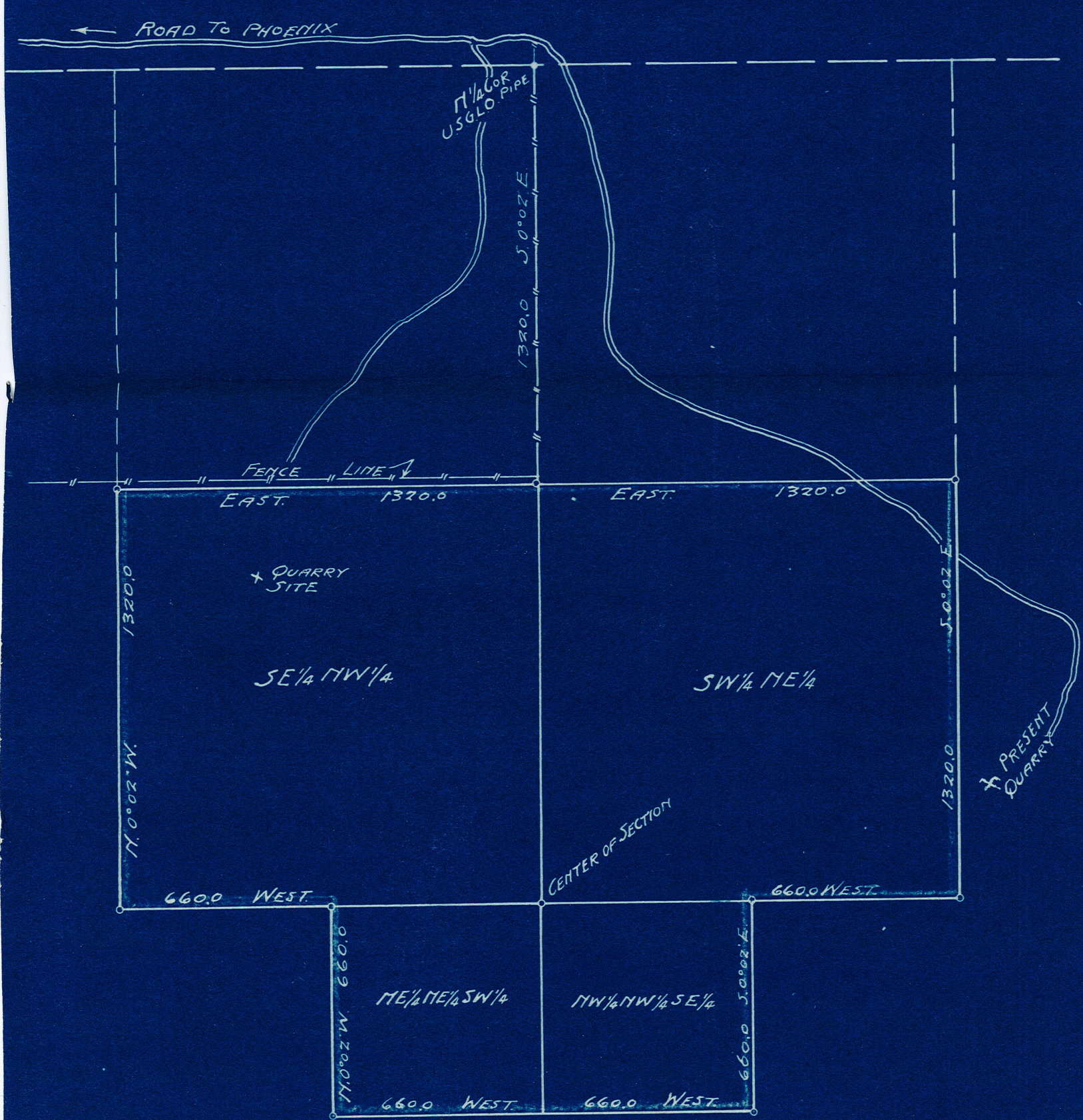


Sketch plats showing survey of that Portion of Section 16, T. 5 N.  
 R. 5 E. held under State Land Lease, Maricopa County, Arizona.  
 Surveyed June 28-29th. 1927, For: Arizona Onyx Products Co. Inc.

By: HARRY E. JONES,

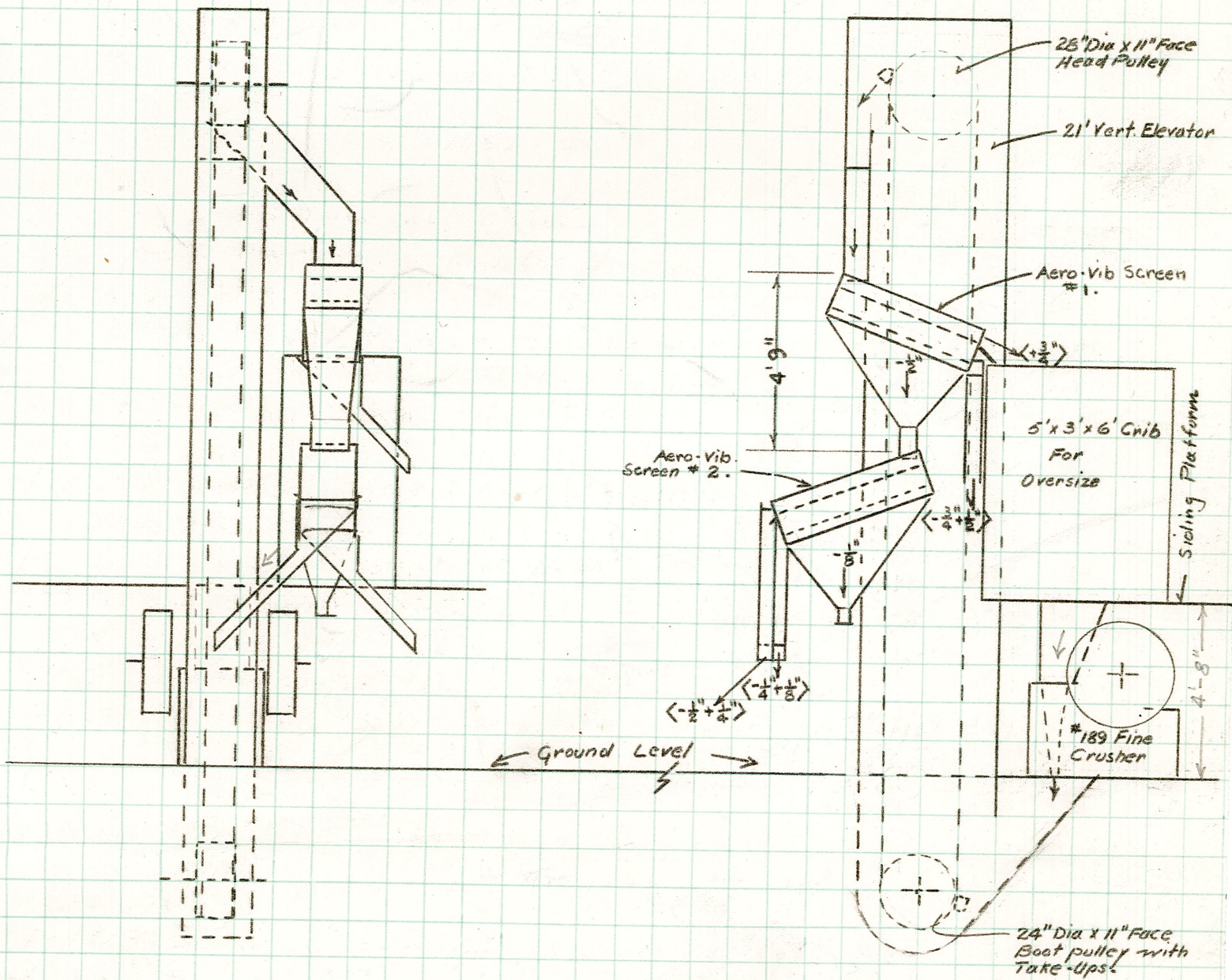
65/71

Scale - One Inch - 400 Feet.



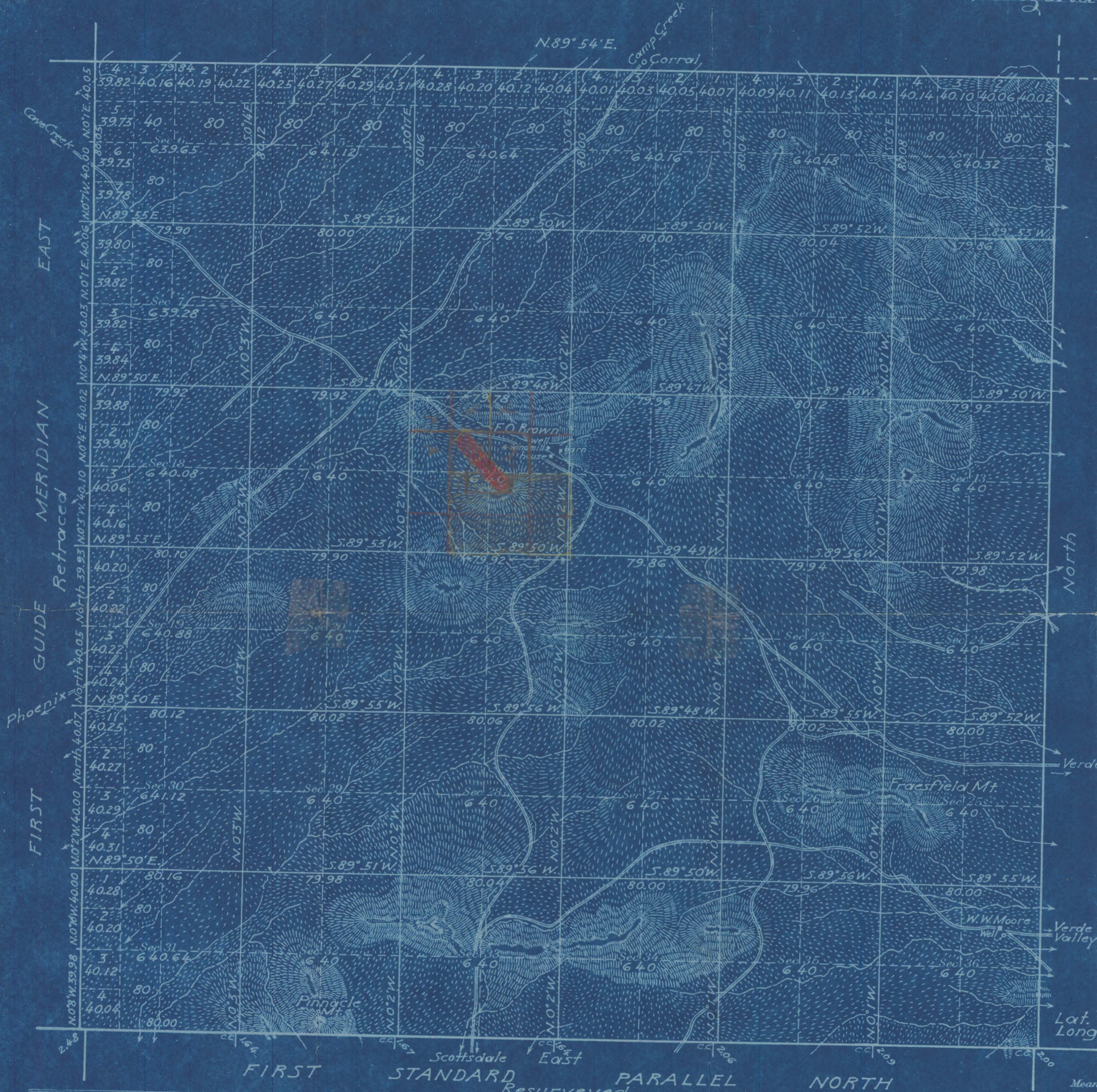
NOTE: - ALL CORNERS INDICATED BY  $\delta$   
 ARE 4x4"-4 FT POSTS.

FOR MR. A. L. FLAGG, EM.  
PHOENIX, ARIZ.



POSSIBLE ARRANGEMENT OF CRUSHER,  
ELEVATOR & SCREENS FOR HANDLING  
5 TONS/HR OF ONYX. 11/25/39. A-C CO. EL PASO  
MCK.

Township No. 5 North Range No. 5 East Gila and Salt River Meridian, Arizona



Areas in Acres	
Public Land	23044.37
Indian Reservation	
Indian Allotments	
Mineral Claims	
Water Surface	
<b>Total Area</b>	<b>23044.37</b>

Lat. 33° 43' 29" N.  
Long. 111° 47' 23" W.

Scale 40 Chains to an inch  
Mean Magnetic Declination 13° 30' E.

Surveys Designated	By Whom Surveyed	Group			When Surveyed	
		No.	Date	Amount of Surveys Mts. chs. lks.	Begun	Completed
N. Bdy.	Sidney E. Blount U.S.C.F.	91	Feb. 26, 1919		July 10-11, 1919	
E.					9-10	
1st Std. Par. N.-Res.					June 2-3	
1st Guide Mer. E.-Ret.					Aug. 6-7	
Subdivisions					July 14-30	

The above map of Township No. 5 North Range No. 5 East of the Gila & Salt River Meridian, Arizona is strictly conformable to the field notes of the survey thereof on file in this office, which have been examined and approved.

U. S. Surveyor General's Office  
Phoenix, Ariz., Sept. 4, 1920.

*Frank A. Frost*  
Surveyor General.