



CONTACT INFORMATION

Mining Records Curator
Arizona Geological Survey
1520 West Adams St.
Phoenix, AZ 85007
602-771-1601
<http://www.azgs.az.gov>
inquiries@azgs.az.gov

The following file is part of the

Arizona Department of Mines and Mineral Resources Mining Collection

ACCESS STATEMENT

These digitized collections are accessible for purposes of education and research. We have indicated what we know about copyright and rights of privacy, publicity, or trademark. Due to the nature of archival collections, we are not always able to identify this information. We are eager to hear from any rights owners, so that we may obtain accurate information. Upon request, we will remove material from public view while we address a rights issue.

CONSTRAINTS STATEMENT

The Arizona Geological Survey does not claim to control all rights for all materials in its collection. These rights include, but are not limited to: copyright, privacy rights, and cultural protection rights. The User hereby assumes all responsibility for obtaining any rights to use the material in excess of "fair use."

The Survey makes no intellectual property claims to the products created by individual authors in the manuscript collections, except when the author deeded those rights to the Survey or when those authors were employed by the State of Arizona and created intellectual products as a function of their official duties. The Survey does maintain property rights to the physical and digital representations of the works.

QUALITY STATEMENT

The Arizona Geological Survey is not responsible for the accuracy of the records, information, or opinions that may be contained in the files. The Survey collects, catalogs, and archives data on mineral properties regardless of its views of the veracity or accuracy of those data.

PRINTED: 12/22/2003

ARIZONA DEPARTMENT OF MINES AND MINERAL RESOURCES AZMILS DATA

PRIMARY NAME: MAMIE MINE

ALTERNATE NAMES:

COCHISE COUNTY MILS NUMBER: 191

LOCATION: TOWNSHIP 20 S RANGE 22 E SECTION 16 QUARTER NE
LATITUDE: N 31DEG 41MIN 30SEC LONGITUDE: W 110DEG 05MIN 49SEC
TOPO MAP NAME: TOMBSTONE - 7.5 MIN

CURRENT STATUS: PAST PRODUCER

COMMODITY:
SILVER

BIBLIOGRAPHY:
KEITH, S.B., 1973, AZBM BULL. 187, P. 77

MAMIE MINE

1/1938

COCHISE COUNTY

See: ABM Bul 143 p 18

See: ~~Mellgren Mines~~ (file), Report by C. J. Sarle, Ph. D.
9/21/78 a. p. *BONANZA MINE GROUP (4) 2005*

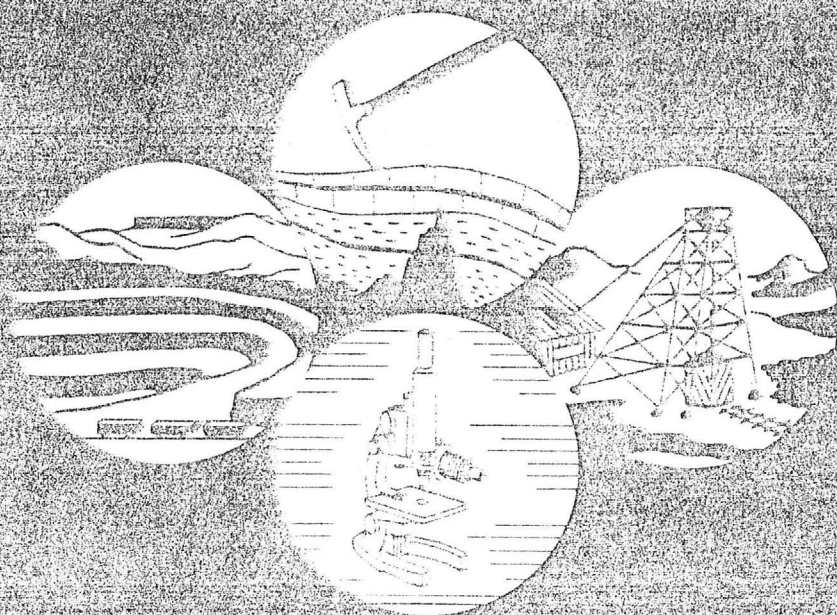
INDEX OF MINING PROPERTIES
IN
COCHISE COUNTY, ARIZONA

by
Stanton B. Keith
Geologist

VISITOR ROOM COPY

THE ARIZONA BUREAU OF MINES

Bulletin 187
1973



THE UNIVERSITY OF ARIZONA
TUCSON

| | | | | | | | |
|--|-----|-----|---------------------------|----------------------|---|--|---|
| 31. Intervener mine (Silver Bill; Costello, Giacoma Bros.) | 20S | 22E | Cen. 11 | Ag, Pb, Au- | Irregular, oxidized orebodies of argentiferous galena along a "northeast" fissure zone cutting Cretaceous Bisbee Group limestone and shales. | Surface and underground workings. Relatively small sporadic production in late 1800's and early 1900's and a few hundred tons in the 1940's. | Church, 1903, p. 12 Butler et alia, 1938, p. 77 ABM file data |
| 32. Luck Sure mine (Old Glory Mng. Co., Bunker Hill Mines Co., Tombstone Development Co.) | 20S | 22E | NW $\frac{1}{4}$ 14 | Ag, Mn, Au-, Pb- | Irregular, oxidized pipe and chimney orebodies of manganiferous silver along "northeast" fissure zones in Pennsylvanian-Permian Naco Group limestone near intersections with the Lucky Cuss Fault. | Shaft and adit workings. A few thousand tons of manganiferous smelter flux produced in 1881 to 1884 and some 1600 tons in 1905-1906. | Goodale, 1889, p. 767 Church, 1903, p. 29 Butler et alia, 1938, p. 43, 46, 80, 103, Pl. IV ABM file data |
| 33. Lucky Cuss mine (Escondido, McCann, Wedge; Tombstone Mill & Mng. Co., Tombstone Consolidated Mines Co., Bunker Hill Mines Co., Tombstone Development Co.) | 20S | 22E | NW $\frac{1}{4}$ 14 | Ag, Mn, Au-, Pb- | Irregular, extensively oxidized, tabular to chimney-like orebodies, mostly manganiferous silver, in altered Pennsylvanian-Permian Naco Group and Cretaceous Bisbee Group limestones and shales; as veins in the Lucky Cuss fault zone; along northeast fissure zone; and as replacements along bedding plane faults in the limestones close to fissure zones. | Shaft workings. One of the original Tombstone mines. At least 100,000 tons of ore produced since the 1880's. | Goodale, 1889, p. 767 Church, 1903, p. 4, 6, 10, 28- 31, 35 Butler et alia, 1938, p. 41-43, 47, 74-80; Pl. III, IV, XII, XIII Romslo & Ravitz, 1947, p. 7, 8 Needham & Storms, 1956, p. 30 |
| 34. Mamie mine (Mellgren group, Tombstone Silver Fields Co.) | 20S | 22E | E. Cen. 16 | Ag | Silver values in oxidized fissure vein cutting Cretaceous Bisbee Group beds. | Shaft workings. Several hundred tons produced intermittently in the late 1800's and during the 1920's and 1930's. | Church, 1903, p. 6 Butler et alia, 1938, p. 18, Pl. III ABM file data |
| 35. Manganese Silver mine | 20S | 22E | No. Cen. 23 | Cu, Ag, Au-, Mn- | Oxidized copper-silver mineralization in spotty replacement bodies along fracture zones in Paleozoic limestone. | Surface workings. Some 60 tons of ore produced in 1941-1942. | ABM file data |
| 36. Merrimac mine (Tombstone Silver Fields Co.) | 20S | 22E | So. Cen. 9 | Ag, Au | Spotty silver and gold values along an oxidized and altered fault fissure cutting Laramide Uncle Sam quartz latite porphyry. | Shaft mine. A few hundred tons of ore produced sporadically between the 1880's and 1930's. | Butler et alia, p. 100; Pl. III ABM file data |
| 37. Montezuma mine | 20S | 22E | SW $\frac{1}{4}$ 17 | Ag, Au | Spotty silver and gold values along an oxidized and altered fault fissure cutting Laramide Uncle Sam quartz latite porphyry. | Shaft mine. A few hundred tons of ore produced during the late 1880's. | Butler et alia, 1938, p. 100; Pl. III ABM file data |
| 38. Morning Star mine | 20S | 22E | Cen. Bor. 13- 14 | Pb, Ag, Au, Cu- | Oxidized lead and minor copper mineralization along a fracture zone in Paleozoic limestone. | Shaft workings. About 100 tons of ore produced in the late 1930's and early 1940's. | ABM file data |
| 39. Mustang mine (Escapule) | 20S | 22E | W. Cen. 30 | Pb, Ag | Oxidized argentiferous lead mineralization along a fracture zone in Laramide Uncle Sam quartz latite porphyry. | Shaft and surface workings. Approximately 114 tons of ore produced in 1942-1943. | ABM file data |
| 40. Old Guard mine (Royal Guard; Old Guard Mng. Co., Imperial Guard Mng. Co., Silver Bar Mng. Co., Tombstone Silver Fields Mng. Co.) | 20S | 22E | SW $\frac{1}{4}$ 11 | Ag, Au-, Pb-, Mn- | Oxidized oreshoots containing argentiferous lead and manganese mineralization along the Lucky Cuss fault zone at junctions with intersecting fissures. | Shaft mine. Some 2000 tons of ore produced intermittently between 1905 and 1940. | Butler et alia, 1938, p. 46-48, 78; Pl. III, IV, XII ABM file data |

STATE OF ARIZONA
DEPARTMENT OF MINERAL RESOURCES
MINERAL BUILDING, FAIRGROUNDS
PHOENIX, ARIZONA 85007



April 21, 1966

John M. Williams
Attorney-at-law
P. O. Box 1028
Douglas, Arizona 85607

Dear Mr. Williams:

We regret that we have only the enclosed information on the Mamie mine, which probably conforms to the Mamie claim, the subject of your letter of April 19th.

The claim is in the famous Tombstone district and evidently was a producer, although one of the minor ones. If not along the bottom of a wash, it should have fair value as real estate. All of which you probably know, but we can offer no more in the way of an appraisal.

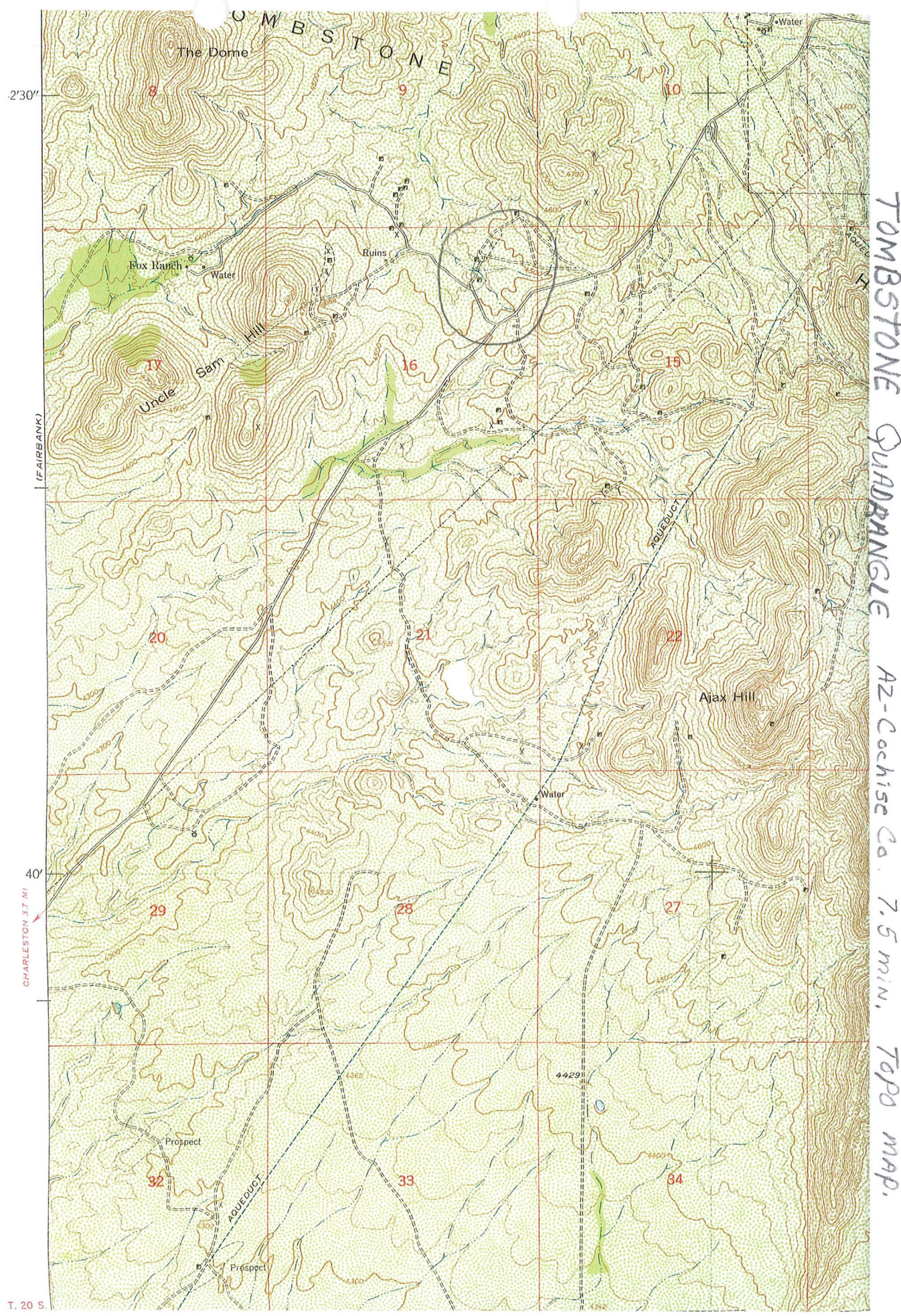
Sincerely yours,

FRANK P. KNIGHT,
Director.

FK:p
Encs.

C
O
P
Y

MAMIE MINE
T. 20 S, R. 22 E, Sec. 16 NE QUARTER.
Cochise Co. Mils 191



TOMBSTONE QUADRANGLE
AZ-Cochise Co. 7.5 min. Topo map.

