



## **CONTACT INFORMATION**

Mining Records Curator  
Arizona Geological Survey  
1520 West Adams St.  
Phoenix, AZ 85007  
602-771-1601  
<http://www.azgs.az.gov>  
[inquiries@azgs.az.gov](mailto:inquiries@azgs.az.gov)

The following file is part of the

Arizona Department of Mines and Mineral Resources Mining Collection

## **ACCESS STATEMENT**

These digitized collections are accessible for purposes of education and research. We have indicated what we know about copyright and rights of privacy, publicity, or trademark. Due to the nature of archival collections, we are not always able to identify this information. We are eager to hear from any rights owners, so that we may obtain accurate information. Upon request, we will remove material from public view while we address a rights issue.

## **CONSTRAINTS STATEMENT**

The Arizona Geological Survey does not claim to control all rights for all materials in its collection. These rights include, but are not limited to: copyright, privacy rights, and cultural protection rights. The User hereby assumes all responsibility for obtaining any rights to use the material in excess of "fair use."

The Survey makes no intellectual property claims to the products created by individual authors in the manuscript collections, except when the author deeded those rights to the Survey or when those authors were employed by the State of Arizona and created intellectual products as a function of their official duties. The Survey does maintain property rights to the physical and digital representations of the works.

## **QUALITY STATEMENT**

The Arizona Geological Survey is not responsible for the accuracy of the records, information, or opinions that may be contained in the files. The Survey collects, catalogs, and archives data on mineral properties regardless of its views of the veracity or accuracy of those data.

PRINTED: 03/06/2003

ARIZONA DEPARTMENT OF MINES AND MINERAL RESOURCES AZMILS DATA

PRIMARY NAME: MADISON GRANITE

ALTERNATE NAMES:

MARICOPA COUNTY MILS NUMBER: 519

LOCATION: TOWNSHIP 5 N RANGE 2 E SECTION 24 QUARTER SE  
LATITUDE: N 33DEG 45MIN 36SEC LONGITUDE: W 112DEG 06MIN 17SEC  
TOPO MAP NAME: NEW RIVER SE - 7.5 MIN

CURRENT STATUS: PAST PRODUCER

COMMODITY:  
STONE GRANITE

BIBLIOGRAPHY:  
USGS NEW RIVER SE QUAD  
ADMMR MADISON GRANITE FILE

11/24/89

ARIZONA DEPARTMENT OF MINES AND MINERAL RESOURCES FILE DATA

PRIMARY NAME: MADISON GRANITE

ALTERNATE NAMES:

MARICOPA COUNTY MILS NUMBER: 519

LOCATION: TOWNSHIP 5 N RANGE 2 E SECTION 24 QUARTER SE  
LATITUDE: N 33DEG 45MIN 36SEC LONGITUDE: W 112DEG 06MIN 17SEC  
TOPO MAP NAME: NEW RIVER SE - 7.5 MIN

*active mine 2002*

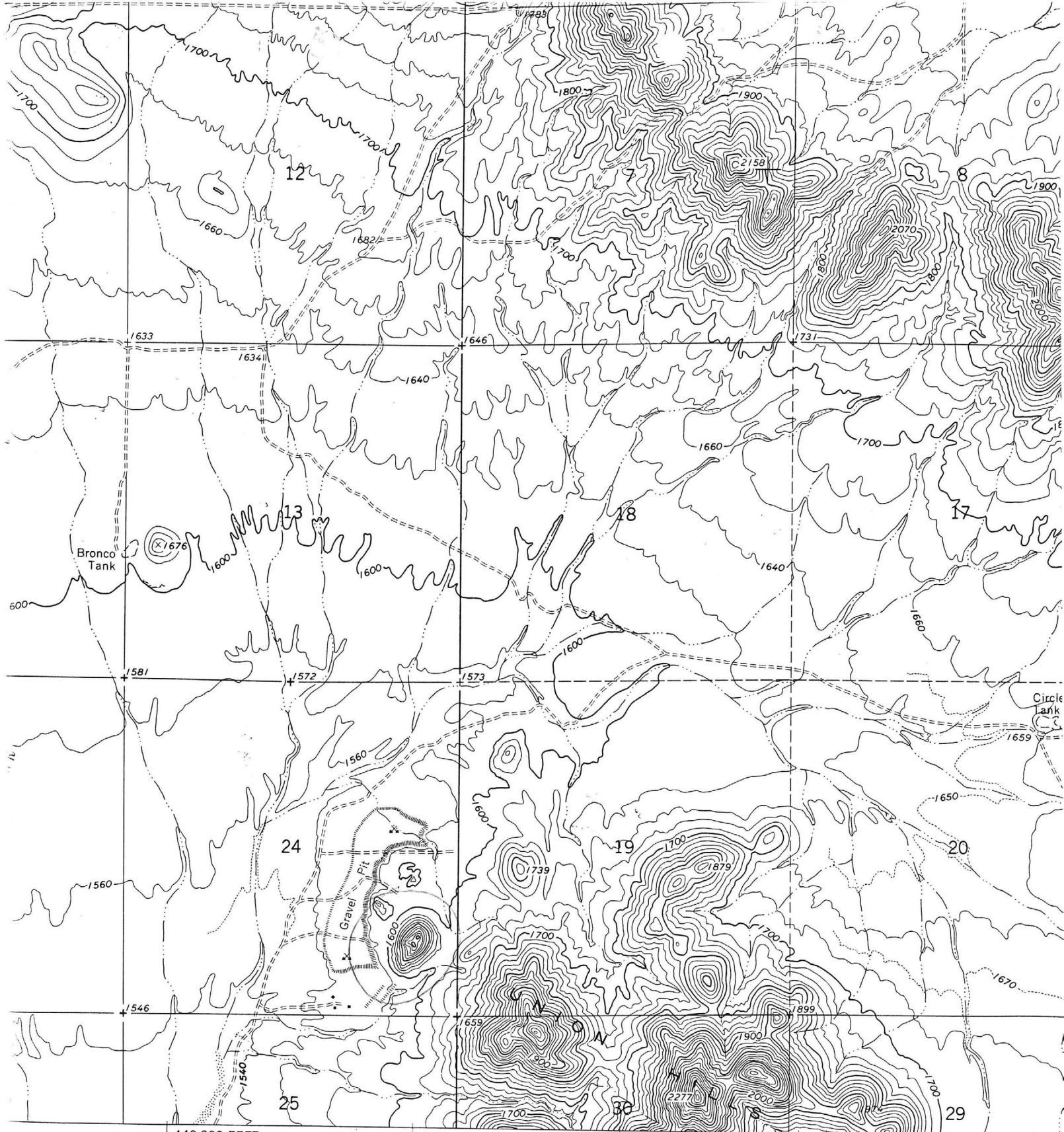
CURRENT STATUS: PAST PRODUCER

COMMODITY:

STONE GRANITE

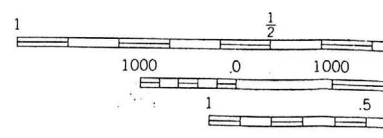
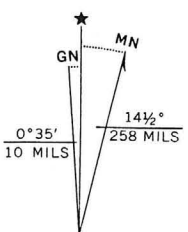
BIBLIOGRAPHY:

USGS NEW RIVER SE QUAD  
ADMMR MADISON GRANITE FILE



Scale: 1:24,000  
 440 000 FEET  
 R. 2 E. R. 3 E.  
 T 5 N

Map prepared, edited, and published by the Geological Survey  
 by USGS and USC&GS  
 by photogrammetric methods from aerial  
 photos taken 1962. Field checked 1964  
 projection. 1927 North American datum  
 foot grid based on Arizona coordinate system, central zone  
 after Universal Transverse Mercator grid ticks,  
 shown in blue  
 dashed lines indicate selected fence lines



UTM GRID AND 1964 MAGNETIC NORTH DECLINATION AT CENTER OF SHEET

#519  
 NEW RIVER SE 7.5 MIN

## ARIZONA DEPARTMENT OF MINES AND MINERAL RESOURCES

VERBAL INFORMATION SUMMARY

1. Mine file: MADISON GRANITE
2. Mine name if different from above:
3. County: Maricopa
4. Information from: Leslie Madison

Company: Madico Inc.

Address: 26639 N. Black Canyon Hwy.  
P.O. Box 1146, Black Canyon Stage  
Phoenix, AZ 85029

Phone: 869-6700

5. Summary of information received, comments, etc.:

Mr. Madison reports he still owns and operates the large granite quarry seen east of I-17 in north Phoenix. This quarry is perhaps better described as the forever diminishing hill, soon to disappear from the skyline. As Mr. Madison is well past retirement age, action is underway to sell the quarry and operations to Mr. Stan Novak, believed to presently be a partner in Sun Landscaping. The porphyritic Precambrian granite mined here is probably the most widely used in desert landscaping. It is commonly called Golden Granite or Madison Granite in the stone yards.

Date: February 8, 1989

Nyal J. Niemuth, Mining Engineer