



## **CONTACT INFORMATION**

Mining Records Curator  
Arizona Geological Survey  
1520 West Adams St.  
Phoenix, AZ 85007  
602-771-1601  
<http://www.azgs.az.gov>  
[inquiries@azgs.az.gov](mailto:inquiries@azgs.az.gov)

The following file is part of the

Arizona Department of Mines and Mineral Resources Mining Collection

## **ACCESS STATEMENT**

These digitized collections are accessible for purposes of education and research. We have indicated what we know about copyright and rights of privacy, publicity, or trademark. Due to the nature of archival collections, we are not always able to identify this information. We are eager to hear from any rights owners, so that we may obtain accurate information. Upon request, we will remove material from public view while we address a rights issue.

## **CONSTRAINTS STATEMENT**

The Arizona Geological Survey does not claim to control all rights for all materials in its collection. These rights include, but are not limited to: copyright, privacy rights, and cultural protection rights. The User hereby assumes all responsibility for obtaining any rights to use the material in excess of "fair use."

The Survey makes no intellectual property claims to the products created by individual authors in the manuscript collections, except when the author deeded those rights to the Survey or when those authors were employed by the State of Arizona and created intellectual products as a function of their official duties. The Survey does maintain property rights to the physical and digital representations of the works.

## **QUALITY STATEMENT**

The Arizona Geological Survey is not responsible for the accuracy of the records, information, or opinions that may be contained in the files. The Survey collects, catalogs, and archives data on mineral properties regardless of its views of the veracity or accuracy of those data.

PRINTED: 03/06/2003

ARIZONA DEPARTMENT OF MINES AND MINERAL RESOURCES AZMILS DATA

PRIMARY NAME: LUCKY

ALTERNATE NAMES:

MARICOPA COUNTY MILS NUMBER: 175

LOCATION: TOWNSHIP 5 N RANGE 9 W SECTION 34 QUARTER SW  
LATITUDE: N 33DEG 43MIN 39SEC LONGITUDE: W 113DEG 11MIN 20SEC  
TOPO MAP NAME: BIG HORN MTS - 15 MIN

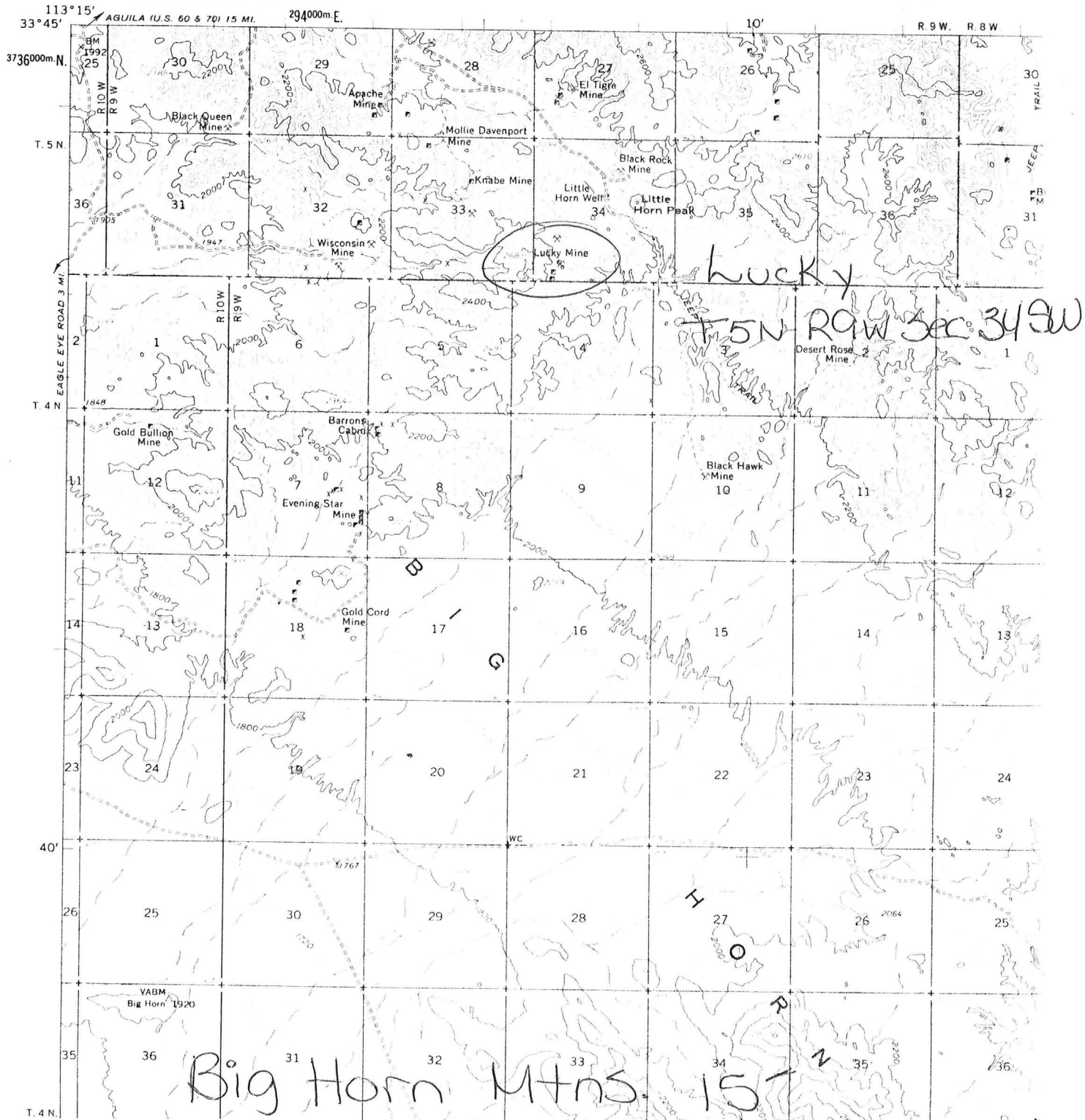
CURRENT STATUS: EXP PROSPECT

COMMODITY:  
GOLD

BIBLIOGRAPHY:  
ADMMR LUCKY FILE

(GLADDEN)

UNITED STATES  
DEPARTMENT OF THE INTERIOR  
GEOLOGICAL SURVEY



LUCKY

MARICOPA

NJN WR 7/25/86: Ron Gilcrest reported that Can-Ex Resources Ltd (c) is going to be active at the El Tigre (file), Kanabe 4 (file), Mollie Davenport (file) and the Lucky (file), Maricopa County. They are planning on conducting geochemical and geophysical surveys to be followed by churn drilling. Can-Ex's major shareholder is Tricon Resources Ltd. (c).

---