



## **CONTACT INFORMATION**

Mining Records Curator  
Arizona Geological Survey  
1520 West Adams St.  
Phoenix, AZ 85007  
602-771-1601  
<http://www.azgs.az.gov>  
[inquiries@azgs.az.gov](mailto:inquiries@azgs.az.gov)

The following file is part of the

Arizona Department of Mines and Mineral Resources Mining Collection

## **ACCESS STATEMENT**

These digitized collections are accessible for purposes of education and research. We have indicated what we know about copyright and rights of privacy, publicity, or trademark. Due to the nature of archival collections, we are not always able to identify this information. We are eager to hear from any rights owners, so that we may obtain accurate information. Upon request, we will remove material from public view while we address a rights issue.

## **CONSTRAINTS STATEMENT**

The Arizona Geological Survey does not claim to control all rights for all materials in its collection. These rights include, but are not limited to: copyright, privacy rights, and cultural protection rights. The User hereby assumes all responsibility for obtaining any rights to use the material in excess of "fair use."

The Survey makes no intellectual property claims to the products created by individual authors in the manuscript collections, except when the author deeded those rights to the Survey or when those authors were employed by the State of Arizona and created intellectual products as a function of their official duties. The Survey does maintain property rights to the physical and digital representations of the works.

## **QUALITY STATEMENT**

The Arizona Geological Survey is not responsible for the accuracy of the records, information, or opinions that may be contained in the files. The Survey collects, catalogs, and archives data on mineral properties regardless of its views of the veracity or accuracy of those data.

PRINTED: 03/06/2003

ARIZONA DEPARTMENT OF MINES AND MINERAL RESOURCES AZMILS DATA

PRIMARY NAME: LUCKY JACK AND ADAMS

ALTERNATE NAMES:

YAVAPAI COUNTY MILS NUMBER: 319

LOCATION: TOWNSHIP 8 N RANGE 4 W SECTION 14 QUARTER C  
LATITUDE: N 34DEG 02MIN 07SEC LONGITUDE: W 112DEG 38MIN 36SEC  
TOPO MAP NAME: SAM POWELL PEAK - 7.5 MIN

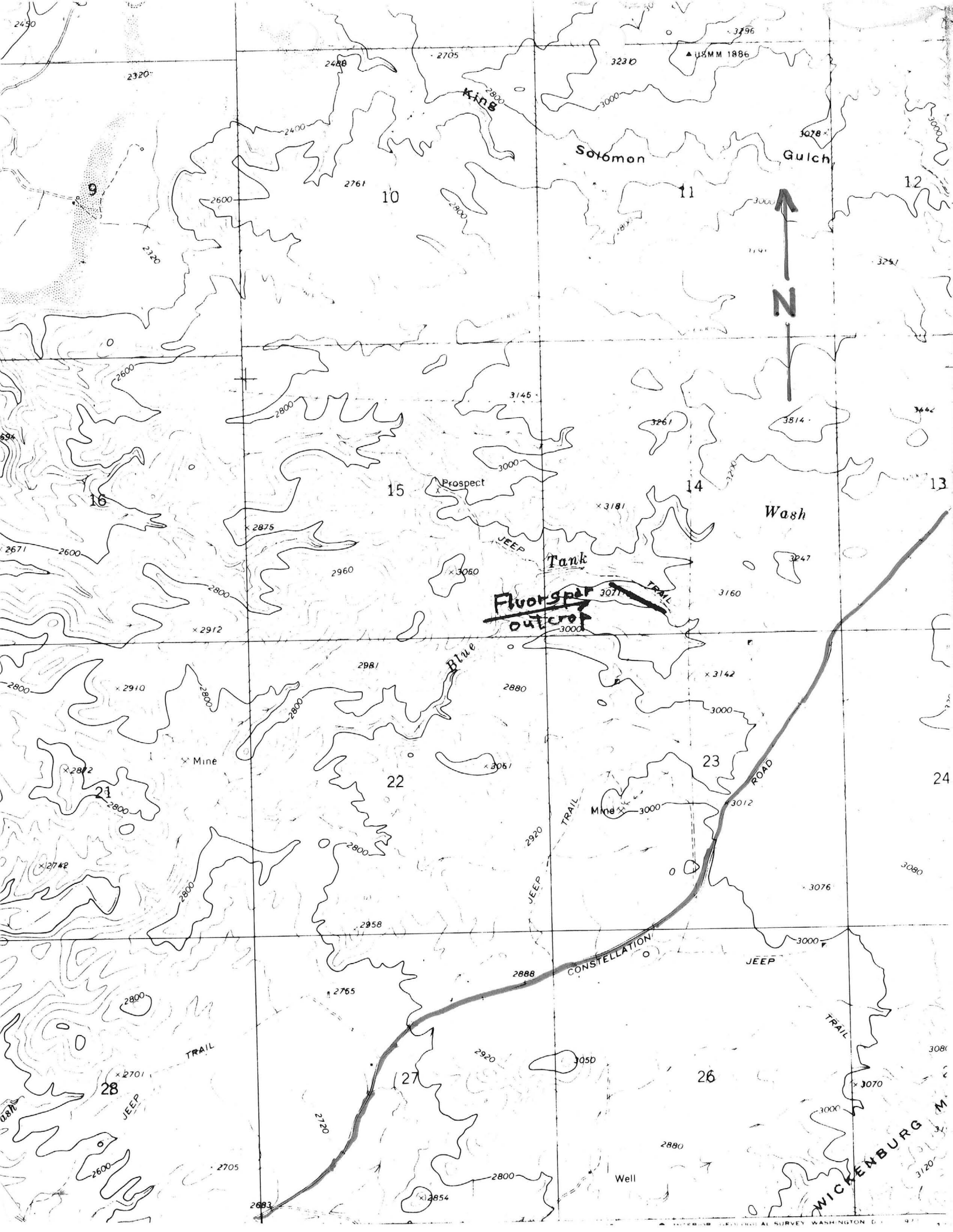
CURRENT STATUS: EXP PROSPECT

COMMODITY:

FLUORINE FLUORSPAR  
BARIUM BARITE  
CALCIUM CALCITE

BIBLIOGRAPHY:

ADMMR LUCKY JACK AND ADAMS FILE



MELVIN H. JONES

*Mining Geologist*

Box 1, Montello, Nevada 89830

Box 406, Wickenburg,  
Arizona, 85358

17 November 1972

RECONNAISSANCE SURVEY OF FLUORSPAR PROSPECT, SECTION 14, T-8-N, R-4-W,  
9 Miles NE of Wickenburg, Arizona, 2 Miles North off Constellation Rd.

The undersigned, accompanied by Mr. George Bodioga of Wickenburg, and Mr. John Youngue (along for the ride) made a trip to the former's Fluorspar prospect, about 9 miles Northeast of Wickenburg, Arizona. Mr. Bodioga and Mr. R.E. Billingsley are owners of the claim in which the Fluorspar is located. Actually, this is part of a large number of copper claims - the fluorspar is an accessory mineral as far as the mentioned individuals are concerned. The writer, in this instance, is examining the fluorspar possibilities, only.

The deposit is located on the South side of a ridge, which is on the South side of Blue Tank wash. The fluorite is in a cupriferous vein that strikes NW-SE and had a width of 4 feet at the point a sample was taken.

GEOLOGY

The area in the vicinity of the Fluorspar is generally pre-Cambrian granites, mostly in the form of schists and gneisses, probably Monsonites of the Yavapai series. The fluorite entered under epithermal conditions.

The mentioned cupriferous vein follows a fault that has many fissures on the sides. The fluorite is in small (mostly white) crystals that is intermixed with quartz. The vein carrying the  $\text{CaF}_2$  has contacts on the sides that are "Rotten" granatics. It is composed of contorted and gnarled rock indicating that intense metamorphism occurred in the distant past. Observed are quartz, fluorite, cuperite, specular hematite, with silica the major item. Much of the rock is in the form of cataclasts.

In the limited area examined, the fluorspar was along the vein sporadically (not continuous). A chip cut across the vein was taken and the assay revealed that that the sample contained 18.2%  $\text{CaF}_2$  (fluorite or fluorspar).

OTHER CONSIDERATIONS

As a "rule of thumb" a fluorspar deposit must have a minimum of 30%  $\text{CaF}_2$  in order to be considered as a money making commercial property. Also, it might be mentioned that when fluorspar is shipped to a consumer, quartz (silica) is a penalty item. Usually for each 1%  $\text{SiO}_2$  (quartz), 2 1/2% of the  $\text{CaF}_2$  is deducted. So this means that the quartz must be removed by gravity separation or floatation, and this involves processing the ore thru a mill.

RECOMMENDATION

Further exploration should be undertaken to find a better grade of fluorspar.

MELVIN H. JONES, Mining Geologist

# IRON KING ASSAY OFFICE

## ASSAY CERTIFICATE

BOX 14 — PHONE 632-7410  
HUMBOLDT, ARIZONA 86329

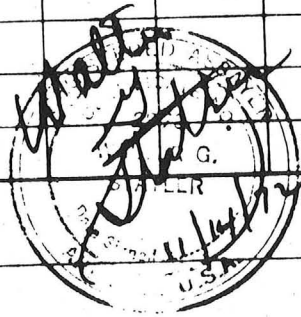
SUBMITTED BY: **MELVIN JONES**

November 14, 1972

DESCRIPTION	oz/ton Au	oz/ton Ag	CaF <sub>2</sub>	% Fe	% Pb	% Zn	% Cu
Sample # 1							0.19
" # 2							0.92
" # 3				14.95			32.0
✓ " # 4			18.2				

CHARGES \$18.50

ASSAYER



DEPARTMENT OF MINERAL RESOURCES

STATE OF ARIZONA

FIELD ENGINEERS REPORT

Mine Lucky Jack & Adams Claims Date March 11, 1958  
District Blue Tank - Yavapai County Engineer LEE HAMMONS  
Subject: Preliminary examination

11316 Elliott Ave. - El Monte, California

Owner: Thad R. Adams, et al - ~~Del-Rio Motel, Wickenburg, Arizona~~

Location: 8 Miles NE of Wickenburg - last 2 miles of road poor

Status: Raw prospect, location work not completed.

Development: None

Minerals Present: fluorite, colorless to deep green, some purple; barite, quartz and calcite

Topography: High, steep ridges, separated by narrow canyons, relief is approximately 200 feet.

Geology: The country rock is a large pegmatite in a quartz-feldspar-mica gneiss. It is intruded by dark, basic, fine-grained dikes - probably basalt. The dikes are 3-20 feet wide, 50-300 feet apart, and essentially parallel and nearly vertical, except in one instance. One dike, or sill, has a dip of approximately 17 degrees.

The fluorite bodies are thin lenses ranging from a fraction of an inch to 6 inches in width. They occur in the dikes at or near the contacts. In the case of the flat-lying intrusion, the fluorite lies against the hanging wall.

The fluorite stringers are for the most part thin and sparse. Nowhere in the ground prospected to date, is there visible a mineable width of mineral. Prospecting has barely begun, however, so the stripping operations planned by the owners may uncover commercial material. There are at least 8 different showings, probably more.

DMR Fluorspar, p. 39

DEPARTMENT OF MINERAL RESOURCES

State of Arizona

MINE OWNER'S REPORT

Date March 7, 1958

- 1. Mine: Lucky Jack (2 claims) Adams (2 claims)
- 2. Location: Sec. 14 Twp. 5N Range 4W Nearest Town: Wickenburg Distance 10 mi  
Direction: SW Nearest R.R. Santa Fe (10 mi) Distance 14 mi  
Road Conditions: fair except 3 mi.
- 3. Mining District and County: Blue Fork - Yuma Co
- 4. Former Name of Mine: none
- 5. Owner: Thad R Adams & partners  
Address: Del Rio Motel Cabin #6, Wickenburg, Ariz.
- 6. Operator: none  
Address:
- 7. Principal Minerals: Fluorite
- 8. Number of Claims: Lode 47 Patented Unpatented X  
Placer Patented Unpatented
- 9. Type of Surrounding Terrain: Mts
- 10. Geology and Mineralization:
- 11. Dimension and Value of Ore Body: 5 ft +

Please give as complete information as possible and attach copies of engineer's reports, shipment returns, maps, etc. if you wish to have them available in this Department's files for inspection by prospective lessors or buyers.

12. Ore "Blocked Out" or "In Sight": *good quantity*

Ore Probable: *large quantities*

13. Mine Workings—Amount and Condition: *none*

No.	Feet	Condition
Shafts.....		
Raises.....		
Tunnels.....		
Crosscuts.....		
Stopes.....		

14. Water Supply: *available*

15. Brief History: *extensively prospected for gold - large amount nearly*

16. Remarks: *Occurs in dykes appearing in intrusion 50 to 200 ft wide thru 3 MTs.*

17. If Property for Sale, List Approximate Price and Terms: *prop. to be arranged*  
*cash or 12 months*  
*4 down payment & minimum*

18. Signature: *Thad R Adams*