



## **CONTACT INFORMATION**

Mining Records Curator  
Arizona Geological Survey  
1520 West Adams St.  
Phoenix, AZ 85007  
602-771-1601  
<http://www.azgs.az.gov>  
[inquiries@azgs.az.gov](mailto:inquiries@azgs.az.gov)

The following file is part of the

Arizona Department of Mines and Mineral Resources Mining Collection

## **ACCESS STATEMENT**

These digitized collections are accessible for purposes of education and research. We have indicated what we know about copyright and rights of privacy, publicity, or trademark. Due to the nature of archival collections, we are not always able to identify this information. We are eager to hear from any rights owners, so that we may obtain accurate information. Upon request, we will remove material from public view while we address a rights issue.

## **CONSTRAINTS STATEMENT**

The Arizona Geological Survey does not claim to control all rights for all materials in its collection. These rights include, but are not limited to: copyright, privacy rights, and cultural protection rights. The User hereby assumes all responsibility for obtaining any rights to use the material in excess of "fair use."

The Survey makes no intellectual property claims to the products created by individual authors in the manuscript collections, except when the author deeded those rights to the Survey or when those authors were employed by the State of Arizona and created intellectual products as a function of their official duties. The Survey does maintain property rights to the physical and digital representations of the works.

## **QUALITY STATEMENT**

The Arizona Geological Survey is not responsible for the accuracy of the records, information, or opinions that may be contained in the files. The Survey collects, catalogs, and archives data on mineral properties regardless of its views of the veracity or accuracy of those data.

PRINTED: 03/06/2003

ARIZONA DEPARTMENT OF MINES AND MINERAL RESOURCES AZMILS DATA

PRIMARY NAME: LUCKY FIND PAT.

ALTERNATE NAMES:

SANTA CRUZ COUNTY MILS NUMBER: 243

LOCATION: TOWNSHIP 23 S RANGE 15 E SECTION 10 QUARTER NE  
LATITUDE: N 31DEG 26MIN 53SEC LONGITUDE: W 110DEG 47MIN 21SEC  
TOPO MAP NAME: NOGALES - 15 MIN

CURRENT STATUS: EXP PROSPECT

COMMODITY:  
COPPER  
GOLD  
SILVER

BIBLIOGRAPHY:  
ADMMR LUCKY FIND PAT FILE

10/21/86

ARIZONA DEPARTMENT OF MINES AND MINERAL RESOURCES FILE DATA

PRIMARY NAME: LUCKY FIND PAT.

ALTERNATE NAMES:

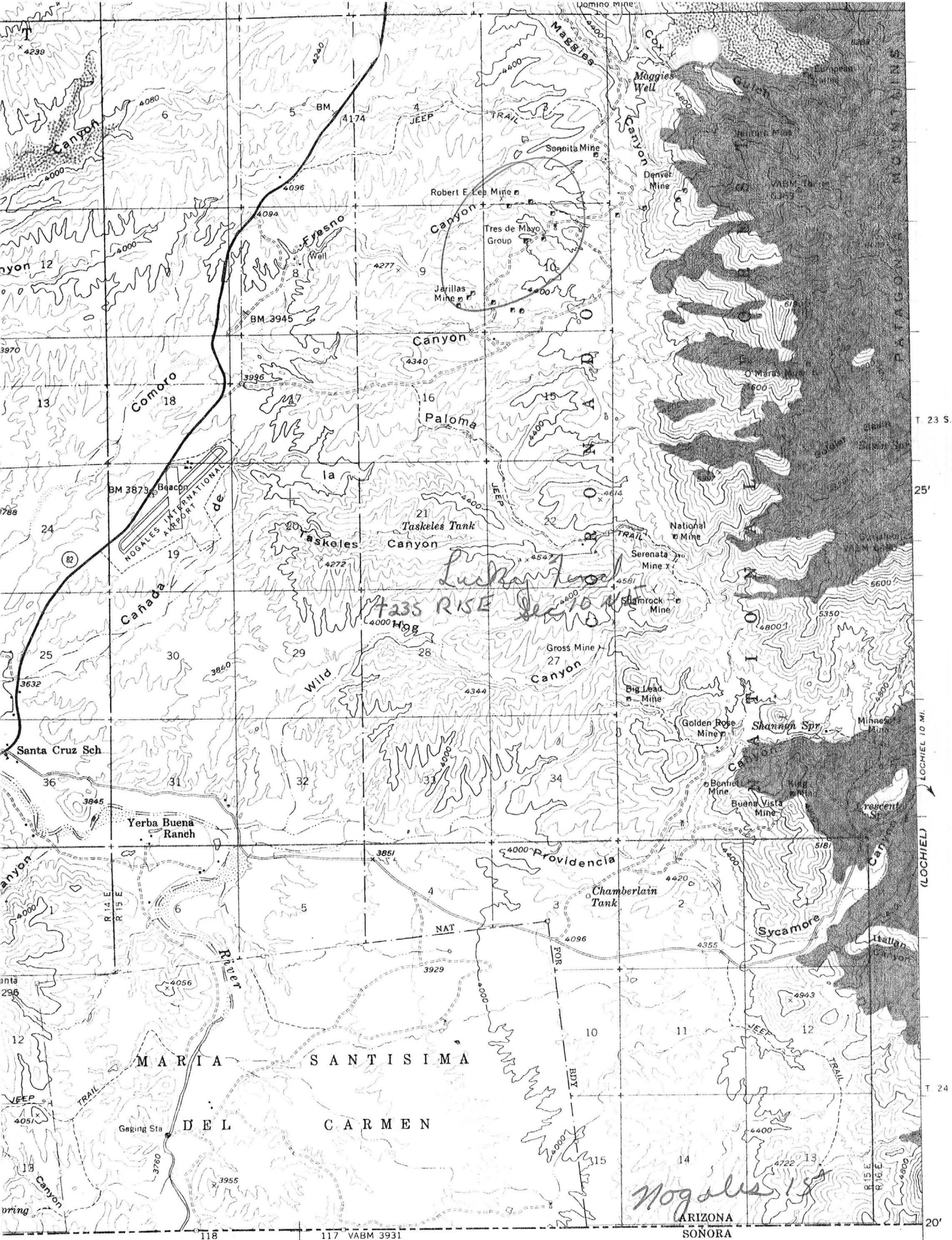
SANTA CRUZ COUNTY MILS NUMBER: 243

LOCATION: TOWNSHIP 23 S RANGE 15 E SECTION 10 QUARTER NE  
LATITUDE: N 31DEG 30MIN SEC LONGITUDE: W 110DEG 45MIN SEC  
TOPO MAP NAME: NOGALES - 15 MIN

CURRENT STATUS:

COMMODITY:  
COPPER  
GOLD  
SILVER

BIBLIOGRAPHY:  
ADMMR LUCKY FIND PAT FILE



LUCKY FIND PAT.

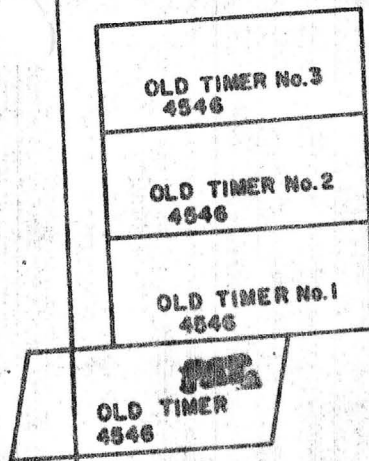
SANTA CRUZ

MG WR 8/15/86: Informed by Ms. Judy stode, Arizona Trust Co., Tucson, phone 795-9600, that the Lucky Find patented lode claim is for sale: \$50,000. The property is owned by Mr. & Mrs. Jerome & Mary Mercker who bought it from a Mr. Rete Mosier. the Lucky Find is in the Palmetto mining district, Santa Cruz County. It was apparently mined for copper, gold and silver. It has a shaft with water standing 35 feet below the collar. We have no file or MILS identification. Apparently it is immediately east of the Tres de Mayo mine.

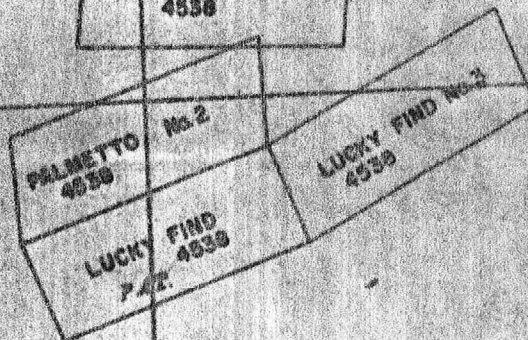
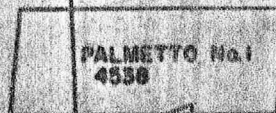
-----



Sec. 3



Sec. 2



Sec. 10

Sec. 11