



CONTACT INFORMATION

Mining Records Curator
Arizona Geological Survey
1520 West Adams St.
Phoenix, AZ 85007
602-771-1601
<http://www.azgs.az.gov>
inquiries@azgs.az.gov

The following file is part of the

Arizona Department of Mines and Mineral Resources Mining Collection

ACCESS STATEMENT

These digitized collections are accessible for purposes of education and research. We have indicated what we know about copyright and rights of privacy, publicity, or trademark. Due to the nature of archival collections, we are not always able to identify this information. We are eager to hear from any rights owners, so that we may obtain accurate information. Upon request, we will remove material from public view while we address a rights issue.

CONSTRAINTS STATEMENT

The Arizona Geological Survey does not claim to control all rights for all materials in its collection. These rights include, but are not limited to: copyright, privacy rights, and cultural protection rights. The User hereby assumes all responsibility for obtaining any rights to use the material in excess of "fair use."

The Survey makes no intellectual property claims to the products created by individual authors in the manuscript collections, except when the author deeded those rights to the Survey or when those authors were employed by the State of Arizona and created intellectual products as a function of their official duties. The Survey does maintain property rights to the physical and digital representations of the works.

QUALITY STATEMENT

The Arizona Geological Survey is not responsible for the accuracy of the records, information, or opinions that may be contained in the files. The Survey collects, catalogs, and archives data on mineral properties regardless of its views of the veracity or accuracy of those data.

PRINTED: 11/20/2001

ARIZONA DEPARTMENT OF MINES AND MINERAL RESOURCES AZMILS DATA

PRIMARY NAME: LUCKY BOY GROUP

ALTERNATE NAMES:

GILA COUNTY MILS NUMBER: 511B

LOCATION: TOWNSHIP 11 N RANGE 9 E SECTION 22 QUARTER NE
LATITUDE: N 34DEG 17MIN 04SEC LONGITUDE: W 111DEG 25MIN 15SEC
TOPO MAP NAME: BUCKHEAD MESA - 7.5 MIN

CURRENT STATUS: EXP PROSPECT

COMMODITY:
COPPER
GOLD
SILVER

BIBLIOGRAPHY:
ADMMR FILES
ADMMR LUCKY BOY GROUP FILE

GILA COUNTY

LUCKY BOY GROUP

William Heath, Payson, and Floyd Sein, Box 33, both of Payson - wanted information on a government agency where they could get help to build a small gold mill on Heath's property west of Payson. Heath stated that he had a good width of 2-3½ percent copper ore that carries 2 ounces of gold to the ton. The silica reportedly is over 60 percent. LAS WR 8-26-66

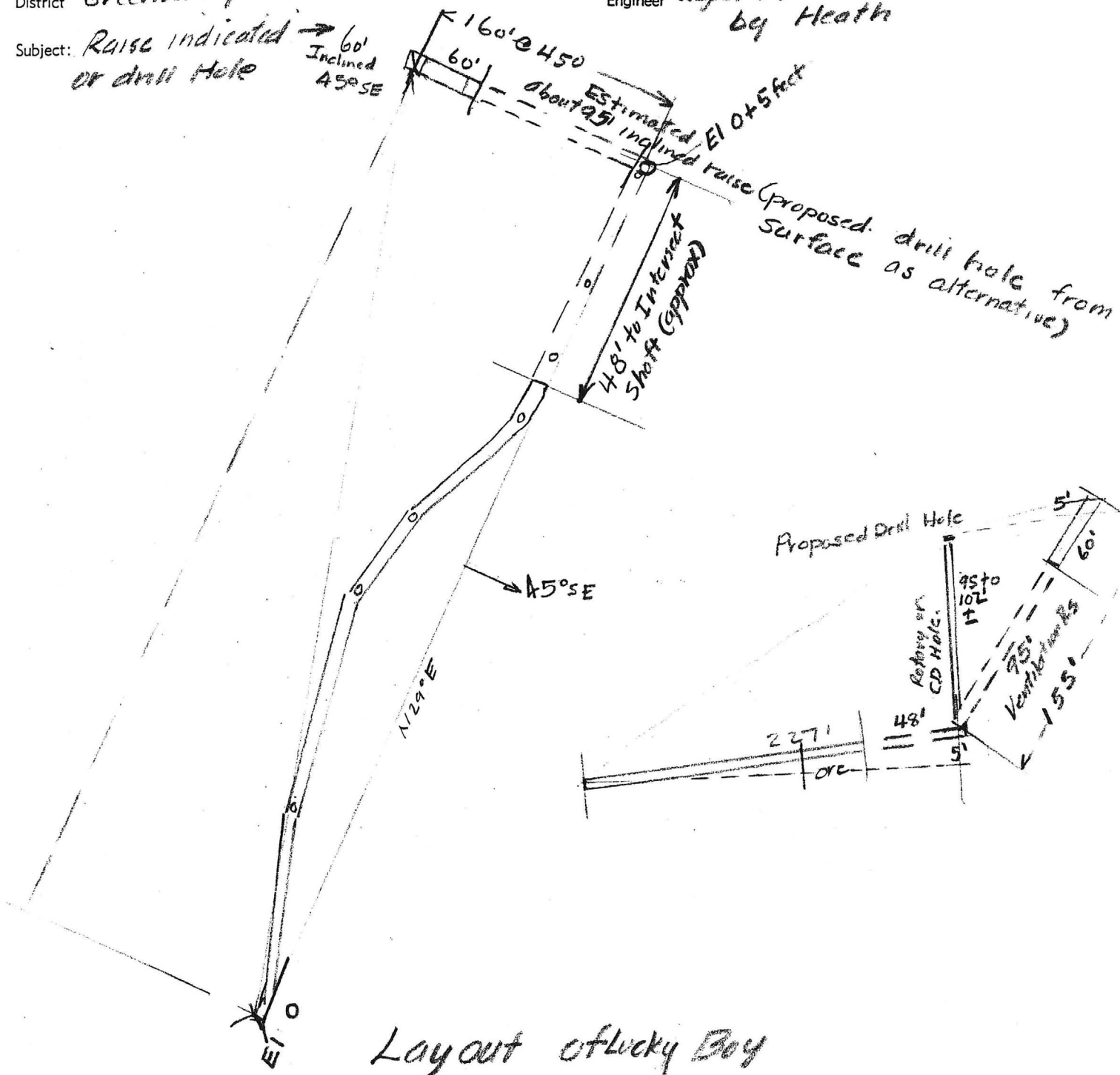
DEPARTMENT OF MINERAL RESOURCES

STATE OF ARIZONA

FIELD ENGINEERS REPORT

Mine *Lucky Boy*
District *Green Valley Gila*
Subject: *Raise indicated or drill Hole*

Date *6-3-59*
Engineer *Reported to Lewis A Smith by Heath*



Layout of Lucky Boy workings.

DEPARTMENT OF MINERAL RESOURCES

State of Arizona

MINE OWNER'S REPORT

Date 6-3-59

1. Mine: Lucky Boy Group
2. Location: Sec..... Twp..... Range..... Nearest Town Payson Distance 12 miles
 Direction N.W. Nearest R.R. Mesa Distance 92 miles
 Road Conditions Rough from Payson west
3. Mining District and County: Green Valley, Gila Co
4. Former Name of Mine:
5. Owner: W. D. Heath
 Address: Box 35, Payson, Ariz.
6. Operator:
- Address:
7. Principal Minerals: Gold (small amt Cu) Copper increasing
8. Number of Claims: Lode 9 Patented..... Unpatented
 Placer..... Patented..... Unpatented.....
9. Type of Surrounding Terrain: Rolling hills with deeply incised canyons which drain into the East Verde River
10. Geology and Mineralization: The vein lies between serpentine and granite. It is 18" to 4' wide and has been traced over 300 feet on the strike which is N29°E. The dip is 40-45° to the SE. It is developed by a 227-foot adit the last 40 feet of which is in ore which ranges in value from \$900 to \$7500 in gold. (samples every 5 feet) The gangue is quartz and gouge, the quartz being much better in grade.
11. Dimension and Value of Ore Body: The tunnel and a 60 foot shaft indicate that the tunnel at the face is 155 feet below the surface. The shaft had some ^{reported} ore in the bottom few feet. This indicates considerable potential.

Please give as complete information as possible and attach copies of engineer's reports, shipment returns, maps, etc. if you wish to have them available in this Department's files for inspection by prospective leasors or buyers.

12. Ore "Blocked Out" or "In Sight": *Unknown*

Ore Probable: *Good potential*

13. Mine Workings—Amount and Condition:

No.	Feet	Condition
Shafts <i>1</i>	<i>60</i>	<i>partly filled with detritus.</i>
Raises		
Tunnels <i>1</i>	<i>227</i>	<i>Excellent Condition.</i>
Crosscuts		
Stopes		

14. Water Supply: *Presently hauled.*

15. Brief History: *Worked previously in 1895, by unknown persons.*

16. Remarks: *The property has a Chicago Pneumatic Jackhammer, 105 Ingersoll Rand Compressor, and adequate bits and steel. A Jackleg is used for set-ups. The tunnel has track. Plans to continue the adit to a point directly below the shaft, then raise to shaft to get good ventilation. Alternative would be a*

17. If Property for Sale, List Approximate Price and Terms: *drill hole. Would continue drift for ore production at same time.*

18. Signature:

W. D. Heath