



CONTACT INFORMATION

Mining Records Curator
Arizona Geological Survey
1520 West Adams St.
Phoenix, AZ 85007
602-771-1601
<http://www.azgs.az.gov>
inquiries@azgs.az.gov

The following file is part of the

Arizona Department of Mines and Mineral Resources Mining Collection

ACCESS STATEMENT

These digitized collections are accessible for purposes of education and research. We have indicated what we know about copyright and rights of privacy, publicity, or trademark. Due to the nature of archival collections, we are not always able to identify this information. We are eager to hear from any rights owners, so that we may obtain accurate information. Upon request, we will remove material from public view while we address a rights issue.

CONSTRAINTS STATEMENT

The Arizona Geological Survey does not claim to control all rights for all materials in its collection. These rights include, but are not limited to: copyright, privacy rights, and cultural protection rights. The User hereby assumes all responsibility for obtaining any rights to use the material in excess of "fair use."

The Survey makes no intellectual property claims to the products created by individual authors in the manuscript collections, except when the author deeded those rights to the Survey or when those authors were employed by the State of Arizona and created intellectual products as a function of their official duties. The Survey does maintain property rights to the physical and digital representations of the works.

QUALITY STATEMENT

The Arizona Geological Survey is not responsible for the accuracy of the records, information, or opinions that may be contained in the files. The Survey collects, catalogs, and archives data on mineral properties regardless of its views of the veracity or accuracy of those data.

PRINTED: 11/20/2001

ARIZONA DEPARTMENT OF MINES AND MINERAL RESOURCES AZMILS DATA

PRIMARY NAME: LUCK LODGE

ALTERNATE NAMES:

MARICOPA COUNTY MILS NUMBER: 68

LOCATION: TOWNSHIP 3 N RANGE 4 W SECTION 36 QUARTER S2
LATITUDE: N 33DEG 33MIN 25SEC LONGITUDE: W 112DEG 36MIN 49SEC
TOPO MAP NAME: WHITE TANK MTS - 15 MIN

CURRENT STATUS: EXP PROSPECT

COMMODITY:

IRON TI MAGNETITE
TITANIUM

BIBLIOGRAPHY:

USGS WHITE TANKS MTS QUAD
HARRER C USBM IC 8236 P 71-72
ADMMR "U" FILE

LUCK LOADE MINING CO.

REFERENCES

MARICOPA COUNTY

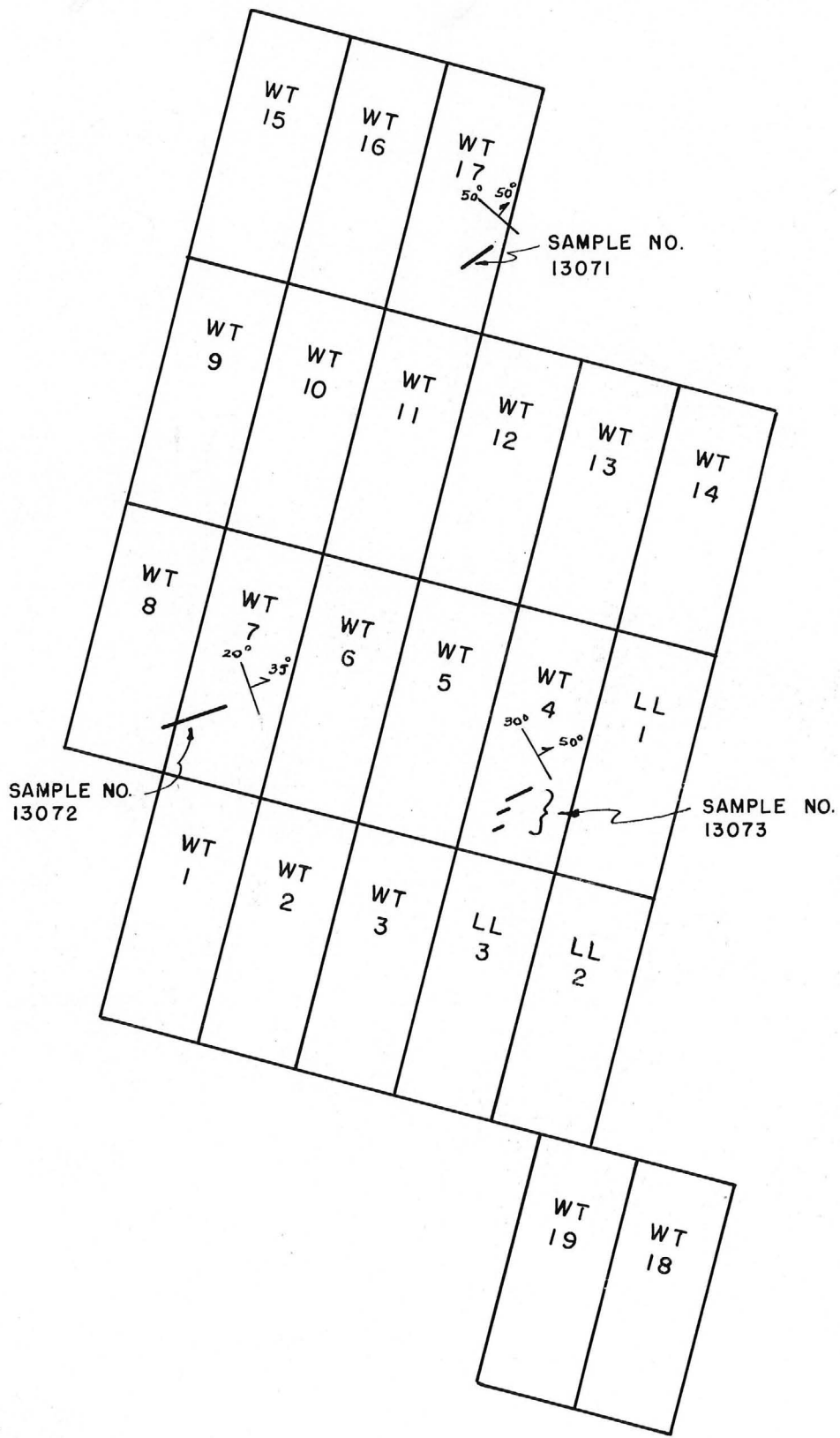
USBM "U" File

USBM IC 8236 p. 71

ILLUSTRATION



SCALE 1" = 1000'
JUNE - 1955



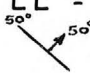
CLAIM NAMES
 WT = White Tank
 LL = Luck Lode
 Strike and dip

FIG. 2 GENERALIZED CLAIM MAP LUCK LODE MINING CO.

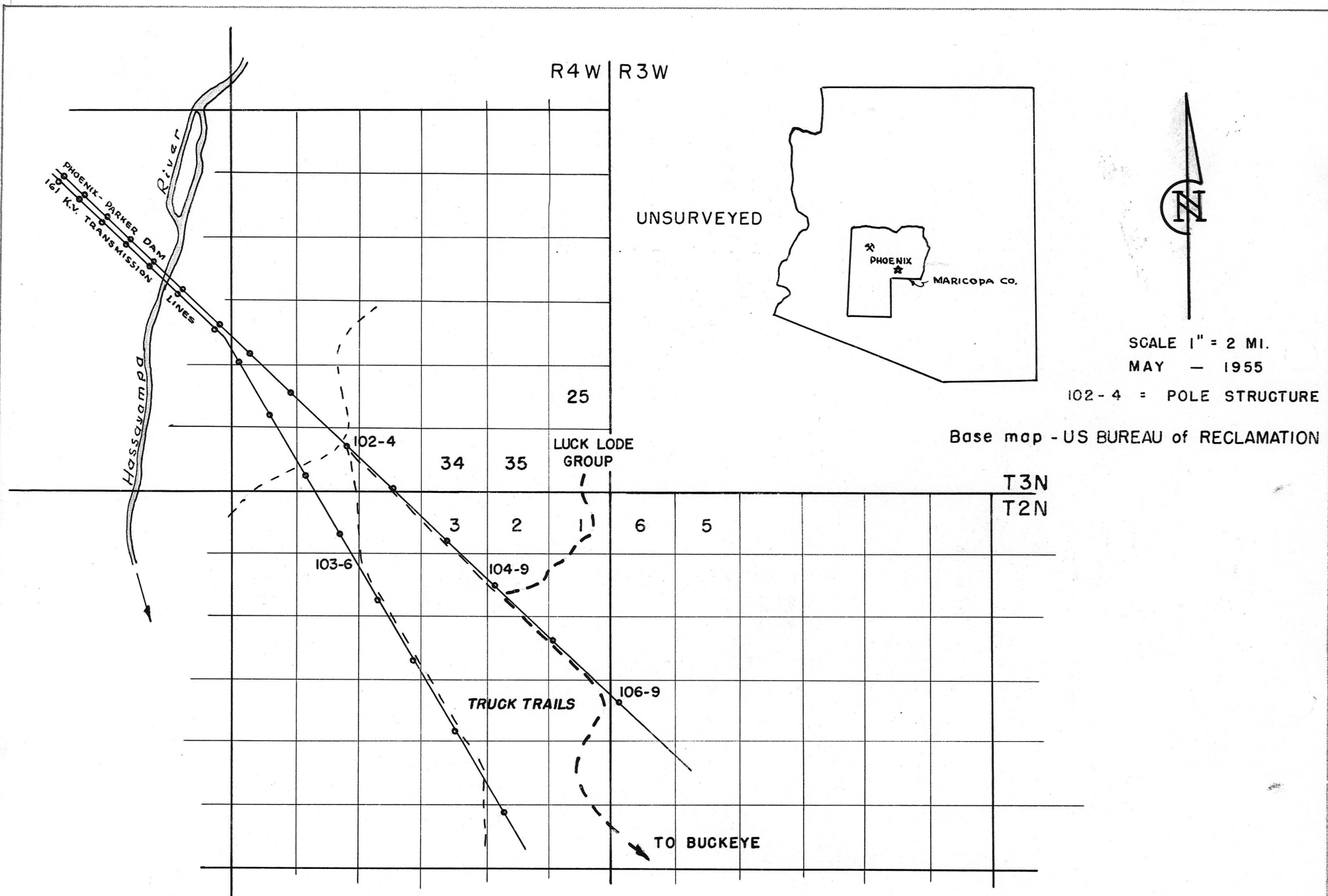
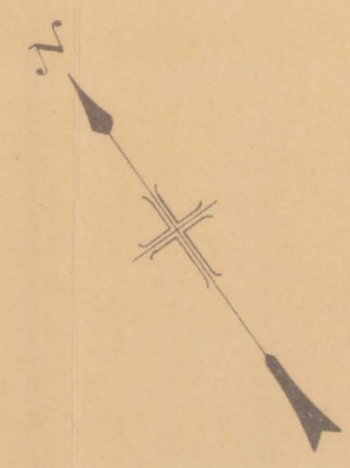
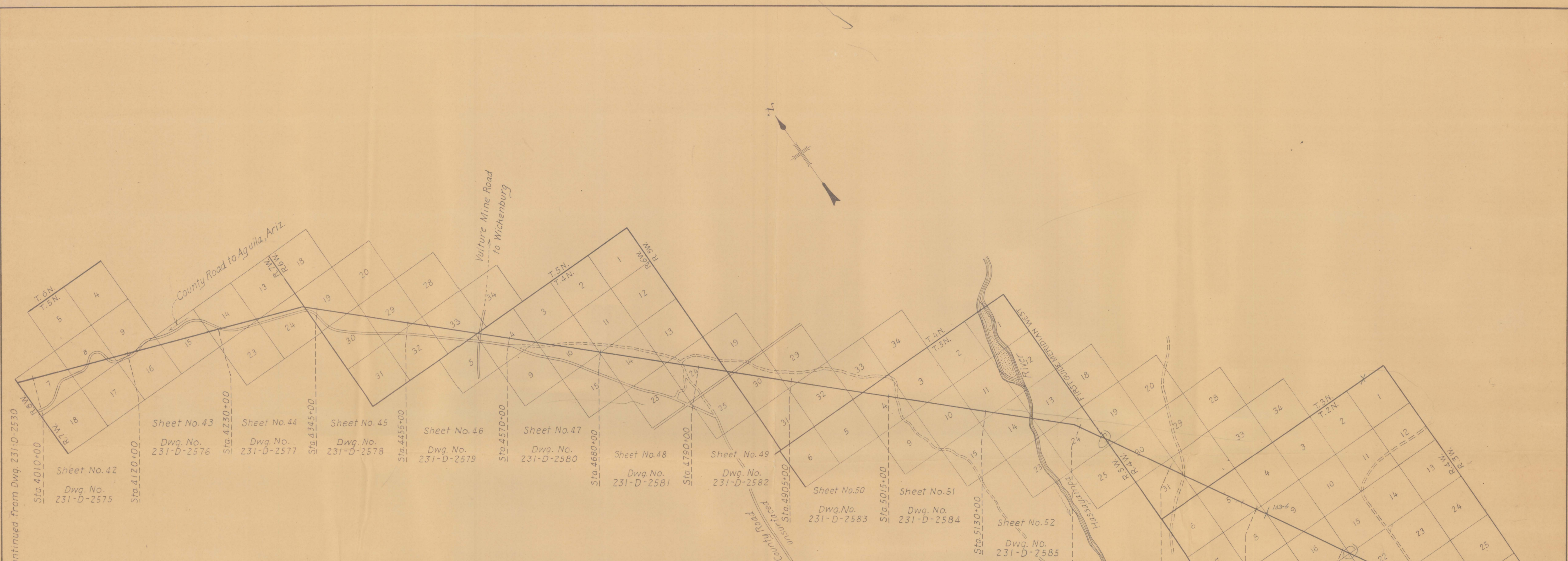


FIG. -1- MAP - LUCK LODE MINING CO.-MARICOPA COUNTY, ARIZ.
LOCATION MAP



Continued from Dwg. 231-D-2530

Continued on Dwg. 231-D-2532

TYPE OF STRUCTURES

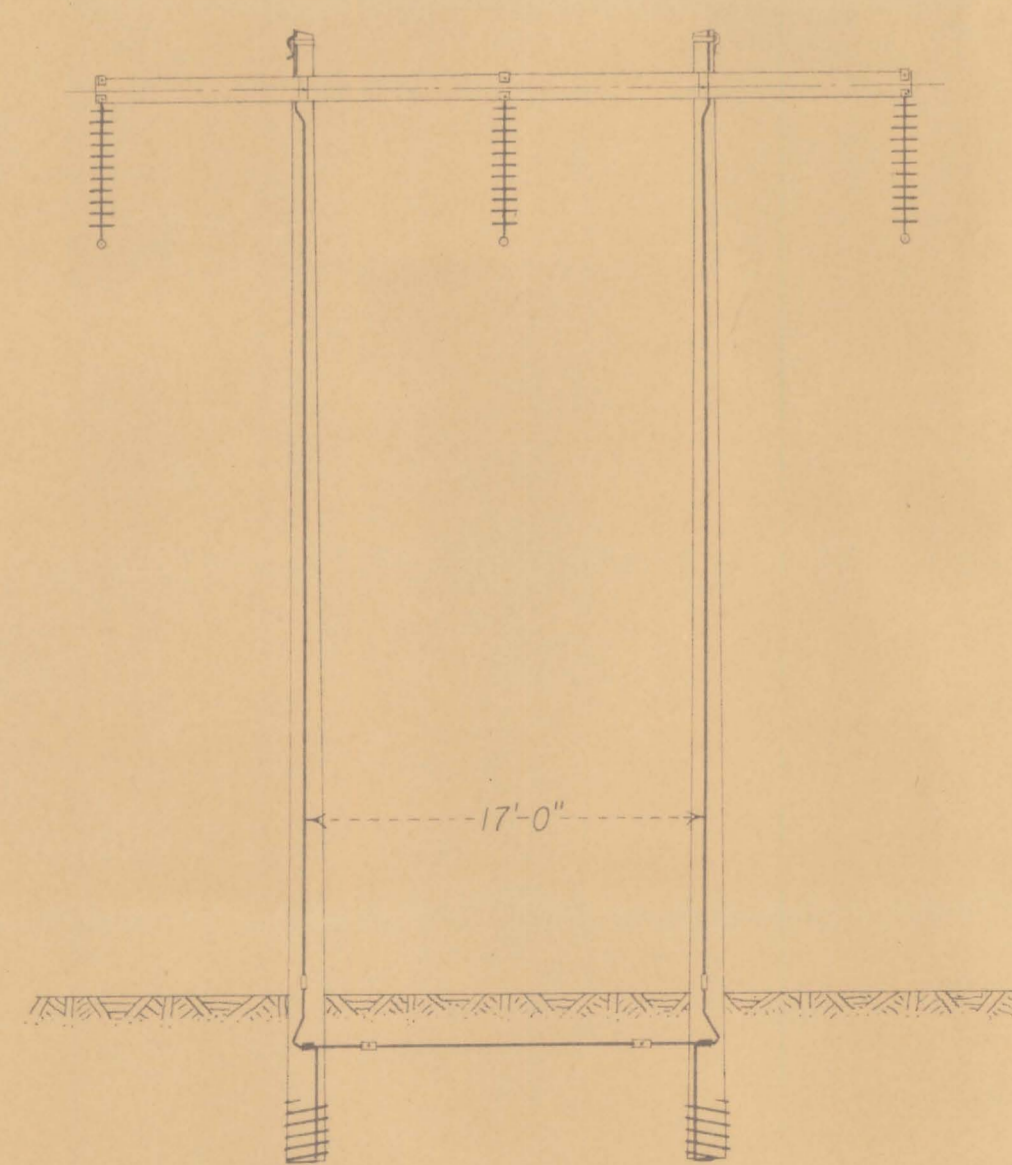
HS.....	DWG. 40-D-2946
HA.....	DWG. 40-D-2947
HTR.....	DWG. 40-D-2948
HST.....	DWG. 40-D-2949
HSB.....	DWG. 40-D-3670
3A.....	DWG. 40-D-2950
3AB.....	DWG. 40-D-2951
3AT.....	DWG. 40-D-2952
3T.....	DWG. 40-D-2953
3TX.....	DWG. 40-D-2954
4SWT.....	DWG. 40-D-2899

LINE DATA

VOLTAGE.....	161 KV.
CONDUCTOR.....	477,000 ACSR, DIA. 0.858 INCHES
LENGTH OF LINE.....	139.81 MILES
OVERHEAD GROUND WIRE.....	3/8" H.S. STEEL STRAND

REFERENCE DRAWINGS

STRUCTURE LIST.....	231-D-2533
GENERAL MAP-PARKER DAM POWER PROJECT.....	231-D-775
SPECIFICATIONS FOR LINE CONSTRUCTION.....	1080



TYPE HS
TYPICAL H-FRAME
TANGENT STRUCTURE

SCALE: 1"=5000'

UNITED STATES
DEPARTMENT OF THE INTERIOR
BUREAU OF RECLAMATION
PARKER DAM POWER PROJECT-CALIF.-ARIZONA
161KV. TRANSMISSION LINE
DAVIS - PHOENIX
KEY MAP

DRAWN A.G.W.	SUBMITTED	<i>M. V. High</i>
TRACED T.J.K.	RECOMMENDED	<i>L. N. McCallum</i>
CHECKED <i>W. H. Nalder</i>	APPROVED	<i>W. H. Nalder</i>

DENVER, COLORADO — JAN. 24, 1946
SHEET 4 OF 5

231-D-2531

file under Lock Lake (Reimer)