



CONTACT INFORMATION

Mining Records Curator
Arizona Geological Survey
1520 West Adams St.
Phoenix, AZ 85007
602-771-1601
<http://www.azgs.az.gov>
inquiries@azgs.az.gov

The following file is part of the

Arizona Department of Mines and Mineral Resources Mining Collection

ACCESS STATEMENT

These digitized collections are accessible for purposes of education and research. We have indicated what we know about copyright and rights of privacy, publicity, or trademark. Due to the nature of archival collections, we are not always able to identify this information. We are eager to hear from any rights owners, so that we may obtain accurate information. Upon request, we will remove material from public view while we address a rights issue.

CONSTRAINTS STATEMENT

The Arizona Geological Survey does not claim to control all rights for all materials in its collection. These rights include, but are not limited to: copyright, privacy rights, and cultural protection rights. The User hereby assumes all responsibility for obtaining any rights to use the material in excess of "fair use."

The Survey makes no intellectual property claims to the products created by individual authors in the manuscript collections, except when the author deeded those rights to the Survey or when those authors were employed by the State of Arizona and created intellectual products as a function of their official duties. The Survey does maintain property rights to the physical and digital representations of the works.

QUALITY STATEMENT

The Arizona Geological Survey is not responsible for the accuracy of the records, information, or opinions that may be contained in the files. The Survey collects, catalogs, and archives data on mineral properties regardless of its views of the veracity or accuracy of those data.

PRINTED: 09-18-2012

ARIZONA DEPARTMENT OF MINES AND MINERAL RESOURCES AZMILS DATA

PRIMARY NAME: LOUELLA LOU

ALTERNATE NAMES:
ARIZONA GIRL
LUCCRO
SPAVETINE

SANTA CRUZ COUNTY MILS NUMBER: 20A

LOCATION: TOWNSHIP 23 S RANGE 14 E SECTION 29 QUARTER SE
LATITUDE: N 31DEG 23MIN 57SEC LONGITUDE: W 110DEG 56MIN 08SEC
TOPO MAP NAME: NOGALES - 15 MIN

CURRENT STATUS: PAST PRODUCER

COMMODITY:
SILVER
GOLD
LEAD
COPPER

BIBLIOGRAPHY:
AZBM CLIPPING FILE
AZBM CARD FILE SANTA CRUZ CO.
ADMMR "U" FILE CU 61 NOT MAPPED
ADMMR LOUELLA LOU FILE

ARIZONA GIRL

REFERENCES

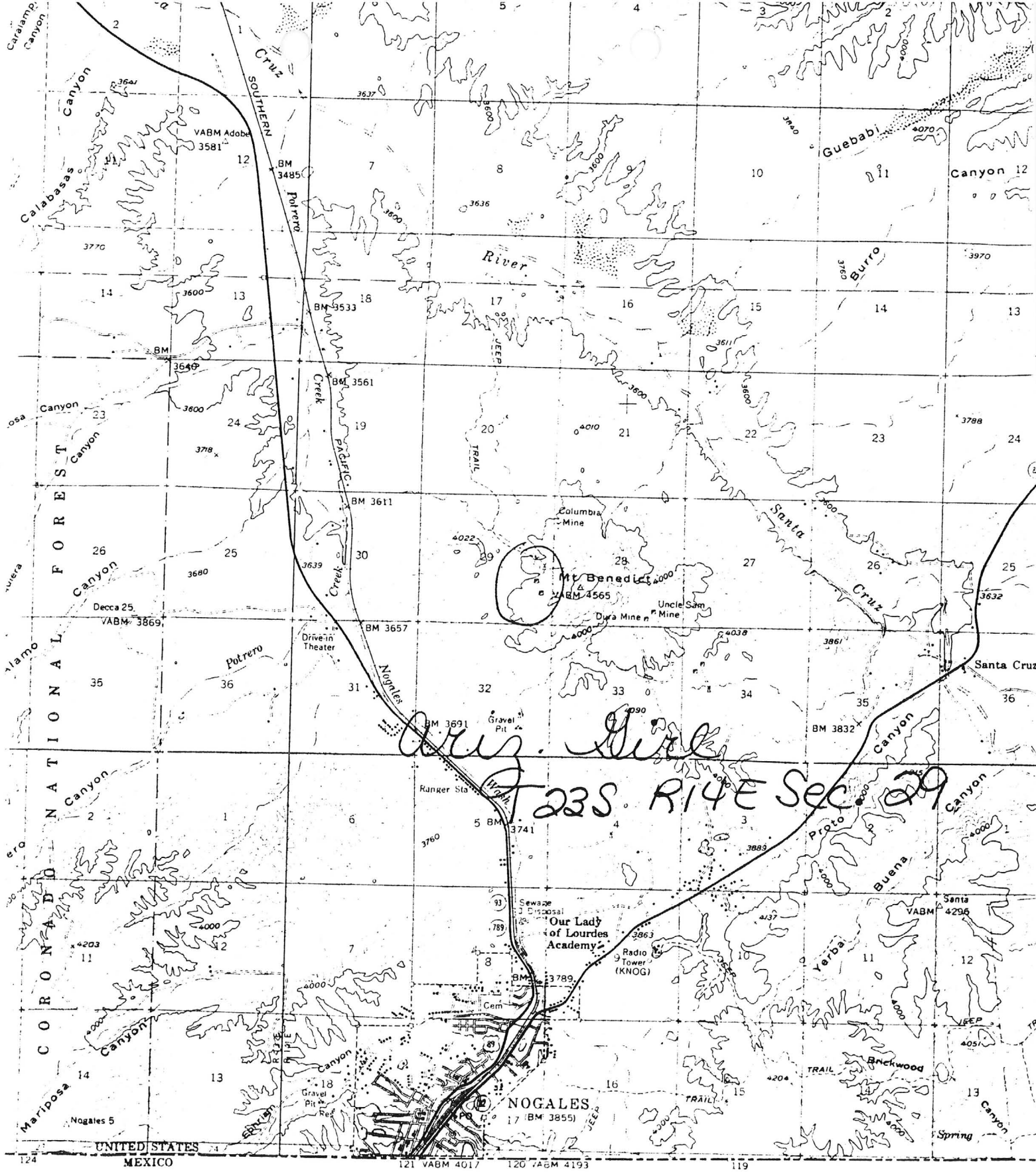
SANTA CRUZ COUNTY
GOLD HILL DIST.
T23S R14E Sec. 29

Santa Cruz County MILS Index #20A

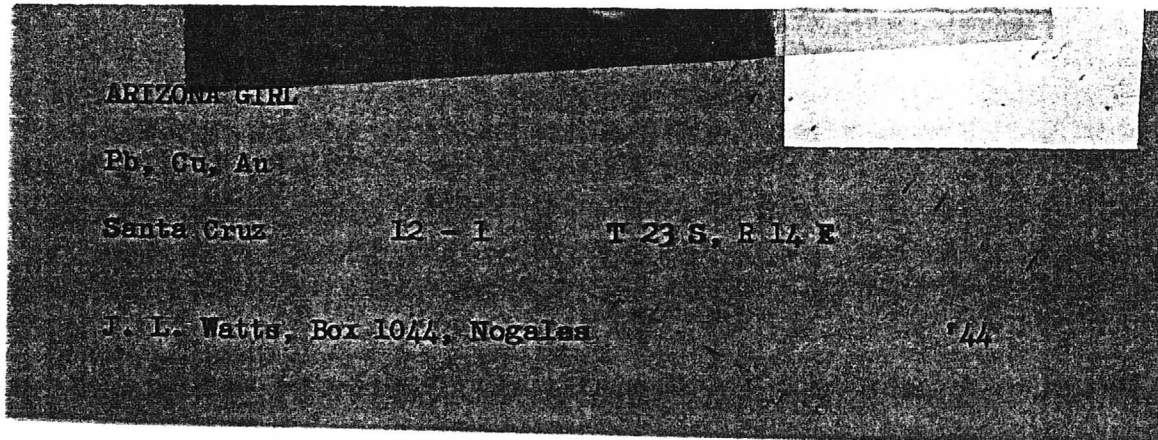
AKA: Louella Lou, Luccro, Spavetime

Field Notes CU61

Nogales 15' Topo (included in file)



Nogales, Az 15'



ARIZONA GIRL

Pb, Cu, Au

Santa Cruz

12 - 1

T 23 S. E 12 E

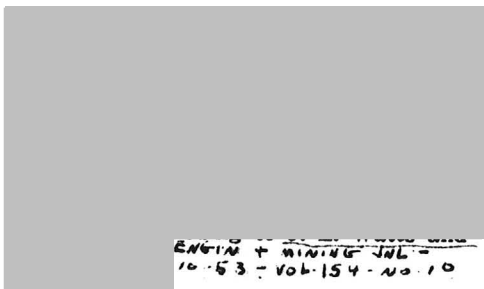
J. L. Watts, Box 1044, Nogales

114

NAME OF MINE: ARIZONA GIRL
OWNER:

COUNTY: Santa Cruz
DISTRICT:
METALS: Cu, Pb, Au

OPERATOR AND ADDRESS		MINE STATUS	
Date:		Date:	
11/44	J. L. Watts, Box 1044, Nogales	11/44	Developing



ENGINE & MINING JOURNAL
1953 - Vol. 154 - No. 10

(C) If you could not do this yourself, would a quick drilling program by some government agency (at government expense) be sufficient?

(D) Or would you prefer a loan plan similar to the arrangements during World War II?

How about a combination plan in two stages such as follows?

Stage 1: Government engineers review project and, if a little drilling appears to be justified and a preliminary key to the situation, such drilling program to be agreed upon by owner and government engineer, paid for by the government, but let by contract.

Stage 2: If results of drilling (or without drilling) justify underground development and/or production equipment, same to be obtainable via a mortgage loan on property.

Please discuss the above:

Flagler Ariz 7-5-50

Char H. Dunning

Phoenix Ariz

In reply to above question
wish to advise that this (Arizona Girl)
prospect is gold consists of a
cross cut tunnel 80' to cut the vein
at present are drifting one the

SUGGESTIONS:

vein but only have about 25'
of work done. Should cut a 20' in
about 50' & which has a copper
showing on surface, will advise
you if any thing develops

DATE

Yours Truly
SIGNATURE J. L. Watts