



## **CONTACT INFORMATION**

Mining Records Curator  
Arizona Geological Survey  
1520 West Adams St.  
Phoenix, AZ 85007  
602-771-1601  
<http://www.azgs.az.gov>  
[inquiries@azgs.az.gov](mailto:inquiries@azgs.az.gov)

The following file is part of the

Arizona Department of Mines and Mineral Resources Mining Collection

## **ACCESS STATEMENT**

These digitized collections are accessible for purposes of education and research. We have indicated what we know about copyright and rights of privacy, publicity, or trademark. Due to the nature of archival collections, we are not always able to identify this information. We are eager to hear from any rights owners, so that we may obtain accurate information. Upon request, we will remove material from public view while we address a rights issue.

## **CONSTRAINTS STATEMENT**

The Arizona Geological Survey does not claim to control all rights for all materials in its collection. These rights include, but are not limited to: copyright, privacy rights, and cultural protection rights. The User hereby assumes all responsibility for obtaining any rights to use the material in excess of "fair use."

The Survey makes no intellectual property claims to the products created by individual authors in the manuscript collections, except when the author deeded those rights to the Survey or when those authors were employed by the State of Arizona and created intellectual products as a function of their official duties. The Survey does maintain property rights to the physical and digital representations of the works.

## **QUALITY STATEMENT**

The Arizona Geological Survey is not responsible for the accuracy of the records, information, or opinions that may be contained in the files. The Survey collects, catalogs, and archives data on mineral properties regardless of its views of the veracity or accuracy of those data.

PRINTED: 11/21/2001

ARIZONA DEPARTMENT OF MINES AND MINERAL RESOURCES AZMILS DATA

PRIMARY NAME: LONG DAY PEGMATITE

ALTERNATE NAMES:

YAVAPAI COUNTY MILS NUMBER: 1309

LOCATION: TOWNSHIP 9 N RANGE 1 W SECTION 28 QUARTER SE  
LATITUDE: N 34DEG 05MIN 12SEC LONGITUDE: W 112DEG 21MIN 53SEC  
TOPO MAP NAME: COLUMBIA - 7.5 MIN

CURRENT STATUS: UNKNOWN

COMMODITY:  
MICA

BIBLIOGRAPHY:  
ADMMR LONG DAY PEGMATITE FILE

3552 III NW  
(MINNEHAHA)

UNITED STATES  
DEPARTMENT OF THE INTERIOR  
GEOLOGICAL SURVEY

112°22'30"  
34°07'30"

374000m E. FORT MISERY 1.2 MI.

376

20'

COLUMBIA 7½' QUAD, ARIZ  
T. 9N., R. 1W.

3776000m N.

3775

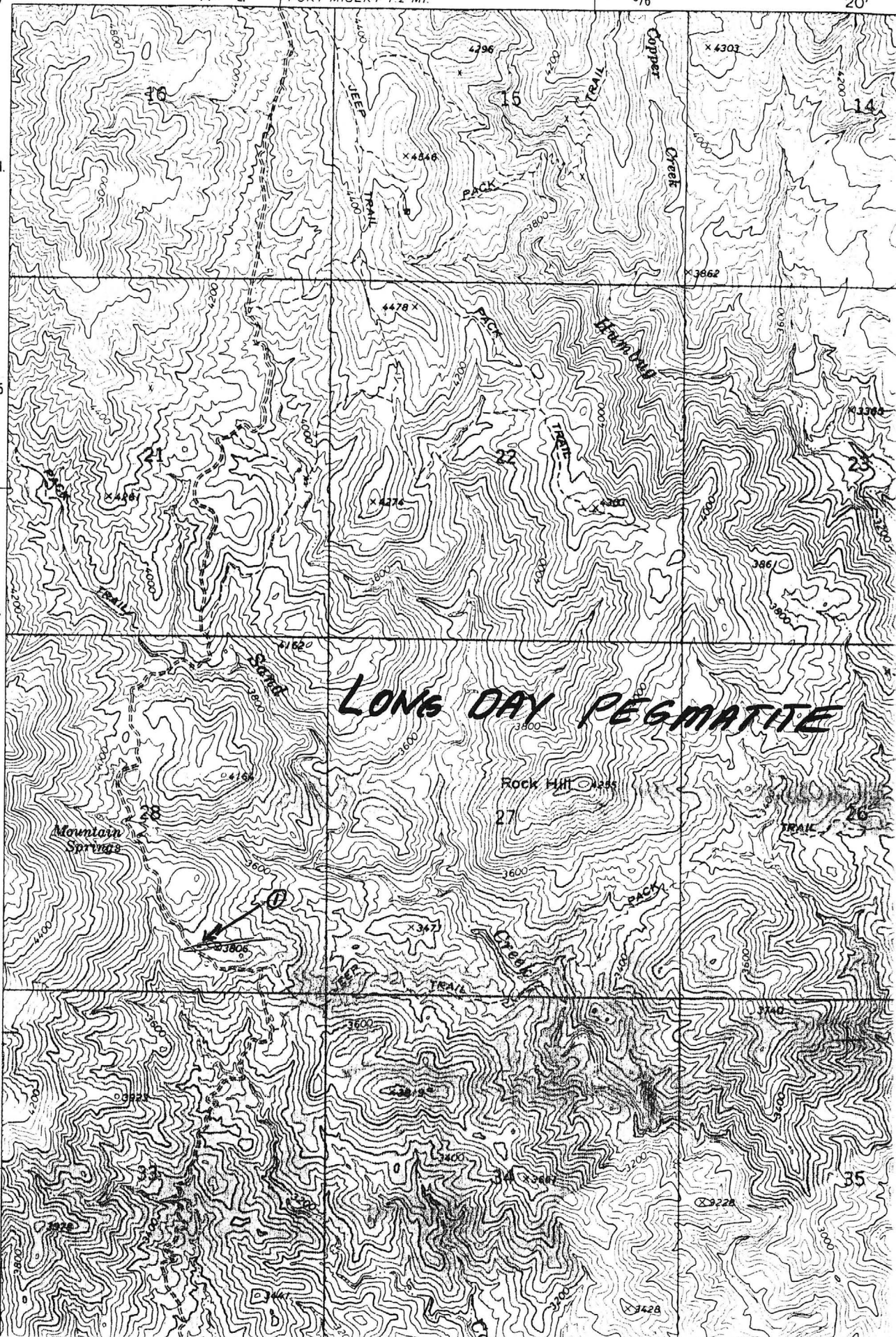
3774

3773

5'  
3772

3771

T. 9N.



① MICA SAMPLE  
12084-4

Large poorly  
zoned pegmatite  
with mica  
pods and lenses

LARGE POORLY  
ZONED PEGMATITE  
WITH MICA  
PODS AND LENSES

LONG DAY PEGMATITE

YAVAPAI COUNTY  
T9N R1W Sec 28

MILS Yavapai index #1309

Columbia 7½' Quad, Arizona (included in file)

LONG DAY PEGMATITE

3/84

YAVAPAI COUNTY

T9N R1W Sec 28

KAP WR 1/20/84: A visit was made to the Long Day Pegmatite in Sec. 28 T9N R1W. A single sample #12084-4 was taken from a muscovite mica pod exposed in a road cut. The sample will be submitted to E. M. Industries. A separate report with a location map has been prepared for a new file.

---

Sheet 1 of 2

COMMODITIES MicaMILS ID No. \_\_\_\_\_ Date January 20, 1984ENGINEER Ken A. PhillipsINFORMATION FROM: Mine visit on above date.PROPERTY SUMMARYI. MINE NAME Long Day Pegmatite OTHER POSSIBLE NAMES  
INCLUDING ANY CLAIM NAMES NOTED \_\_\_\_\_II. LOCATION: T 9N R 1W SEC(S) 28 MINE DISTRICT \_\_\_\_\_  
ELEV. 3800' COUNTY Yavapai TOPO QUAD. Columbia 7½' Arizona  
DIRECTIONS Approximately 23 miles north of Lake Pleasant (See maps)

MAP ATTACHED \_\_\_\_\_

III. OWNERSHIP: NAME \_\_\_\_\_ PHONE \_\_\_\_\_  
ADDRESS: \_\_\_\_\_  
COMPANY NAME IF ANY: \_\_\_\_\_  
PERTINENT PEOPLE \_\_\_\_\_

IV. PROPERTY AND HOLDINGS: \_\_\_\_\_

V. PAST PRODUCTION - NOTED, KNOWN, PROBABLE, UNKNOWN, NONE NoneVI. CURRENT STATUS: OccurrenceVII. WORKINGS: Road cut which exposed 30' of dip and a few shallow prospect cuts.VIII. GEOLOGY AND MINERALOGY: DEPOSIT TYPE: PegmatiteLENGTH: +1,000' WIDTH: 5-30' VEIN STRIKE E-W(Approx. N75E)HOST ROCK: GraniteECONOMIC MINERALS: Possibly muscovite mica. No "rare" were noted.

COMMENTS: \_\_\_\_\_

IX. EQUIPMENT ON SIGHT: None

X. SAMPLING: NOTE TYPE IF ANY, DRILLING? #12084-4 taken from pod of muscovite mica  
exposed by road cut. To be submitted to E. M. Industries.

XI. REFERENCES AND REMARKS