



## **CONTACT INFORMATION**

Mining Records Curator  
Arizona Geological Survey  
1520 West Adams St.  
Phoenix, AZ 85007  
602-771-1601  
<http://www.azgs.az.gov>  
[inquiries@azgs.az.gov](mailto:inquiries@azgs.az.gov)

The following file is part of the

Arizona Department of Mines and Mineral Resources Mining Collection

## **ACCESS STATEMENT**

These digitized collections are accessible for purposes of education and research. We have indicated what we know about copyright and rights of privacy, publicity, or trademark. Due to the nature of archival collections, we are not always able to identify this information. We are eager to hear from any rights owners, so that we may obtain accurate information. Upon request, we will remove material from public view while we address a rights issue.

## **CONSTRAINTS STATEMENT**

The Arizona Geological Survey does not claim to control all rights for all materials in its collection. These rights include, but are not limited to: copyright, privacy rights, and cultural protection rights. The User hereby assumes all responsibility for obtaining any rights to use the material in excess of "fair use."

The Survey makes no intellectual property claims to the products created by individual authors in the manuscript collections, except when the author deeded those rights to the Survey or when those authors were employed by the State of Arizona and created intellectual products as a function of their official duties. The Survey does maintain property rights to the physical and digital representations of the works.

## **QUALITY STATEMENT**

The Arizona Geological Survey is not responsible for the accuracy of the records, information, or opinions that may be contained in the files. The Survey collects, catalogs, and archives data on mineral properties regardless of its views of the veracity or accuracy of those data.

PRINTED: 03/06/2003

ARIZONA DEPARTMENT OF MINES AND MINERAL RESOURCES AZMILS DATA

PRIMARY NAME: LONE PINE PROSPECTS

ALTERNATE NAMES:

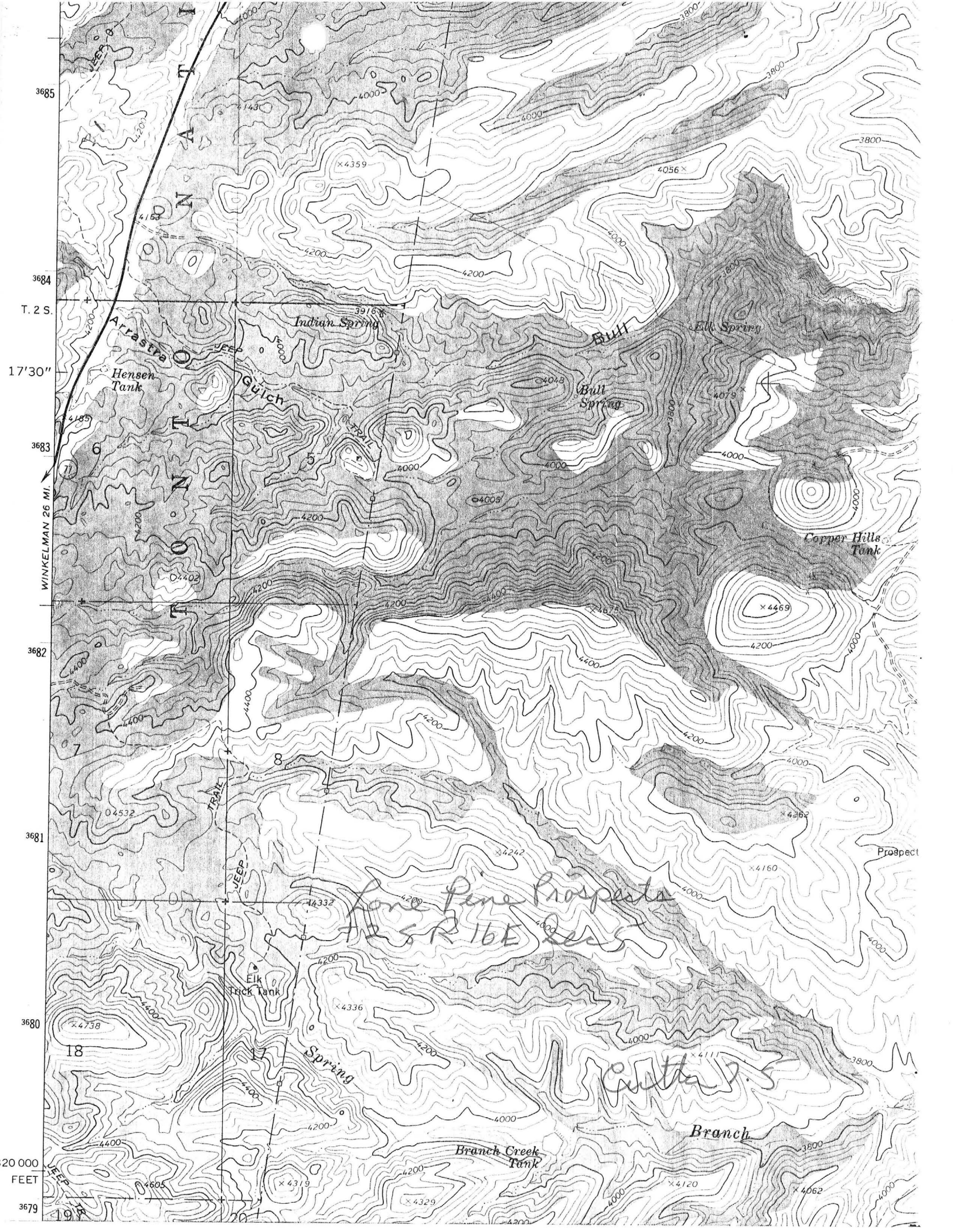
GILA COUNTY MILS NUMBER: 63A

LOCATION: TOWNSHIP 2 S RANGE 16 E SECTION 5 QUARTER W2  
LATITUDE: N 33DEG 17MIN 10SEC LONGITUDE: W 110DEG 44MIN 18SEC  
TOPO MAP NAME: CUTTER - 7.5 MIN

CURRENT STATUS: EXP PROSPECT

COMMODITY:  
ASBESTOS SHORT FIBER

BIBLIOGRAPHY:  
STEWART L A CHRYS-ASB DEPTS AZ USBM IC 7706  
1955 P 108  
ADMMR LONE PINE PROSPECTS FILE



3685  
3684  
T. 2 S.  
17'30"  
3683  
3682  
3681  
3680  
20 000  
FEET  
3679

WINKELMAN 26 MI.

ARRASTRA

Hensen Tank

Guich

Indian Spring

Bull

Elk Spring

Bull Spring

Copper Hills Tank

TRAIL

DEEP

Elk Truck Tank

Pine Prospects  
SR 16E

Spring

Branch Creek Tank

Carter's Branch

Branch

Prospect

4359

4056

3915

4048

4079

4185

4005

4469

4532

4433

4242

4362

4758

4336

4160

4605

4319

4120

4062

4329

LONE PINE PROSPECTS

GILA COUNTY

KAP WR 4/17/87: Charles Merritt, 10 Stellar, Chandler, Arizona 85226 reported the results of a single assay from the Lone Pine Prospects (Gila MILS 63A), Gila County. The sample ran 0.423 tr. oz /ton in gold. He feels this result is encouraging enough for him to continue prospecting the property.

---

NJN WR 9/11/87: Chuck Merritt (card) visited and reported that his follow up assays at the Indian Springs Deposit (file) Gila County found no gold. The previous reported gold was due to an assay error.

---