



CONTACT INFORMATION

Mining Records Curator
Arizona Geological Survey
1520 West Adams St.
Phoenix, AZ 85007
602-771-1601
<http://www.azgs.az.gov>
inquiries@azgs.az.gov

The following file is part of the

Arizona Department of Mines and Mineral Resources Mining Collection

ACCESS STATEMENT

These digitized collections are accessible for purposes of education and research. We have indicated what we know about copyright and rights of privacy, publicity, or trademark. Due to the nature of archival collections, we are not always able to identify this information. We are eager to hear from any rights owners, so that we may obtain accurate information. Upon request, we will remove material from public view while we address a rights issue.

CONSTRAINTS STATEMENT

The Arizona Geological Survey does not claim to control all rights for all materials in its collection. These rights include, but are not limited to: copyright, privacy rights, and cultural protection rights. The User hereby assumes all responsibility for obtaining any rights to use the material in excess of "fair use."

The Survey makes no intellectual property claims to the products created by individual authors in the manuscript collections, except when the author deeded those rights to the Survey or when those authors were employed by the State of Arizona and created intellectual products as a function of their official duties. The Survey does maintain property rights to the physical and digital representations of the works.

QUALITY STATEMENT

The Arizona Geological Survey is not responsible for the accuracy of the records, information, or opinions that may be contained in the files. The Survey collects, catalogs, and archives data on mineral properties regardless of its views of the veracity or accuracy of those data.

PRINTED: 03/06/2003

ARIZONA DEPARTMENT OF MINES AND MINERAL RESOURCES AZMILS DATA

PRIMARY NAME: LITTLE ROCK QUARRY

ALTERNATE NAMES:

COCONINO COUNTY MILS NUMBER: 531

LOCATION: TOWNSHIP 22 N RANGE 2 W SECTION 24 QUARTER NE
LATITUDE: N 35DEG 16MIN 43SEC LONGITUDE: W 112DEG 26MIN 47SEC
TOPO MAP NAME: HEARST MOUNTAIN - 15 MIN

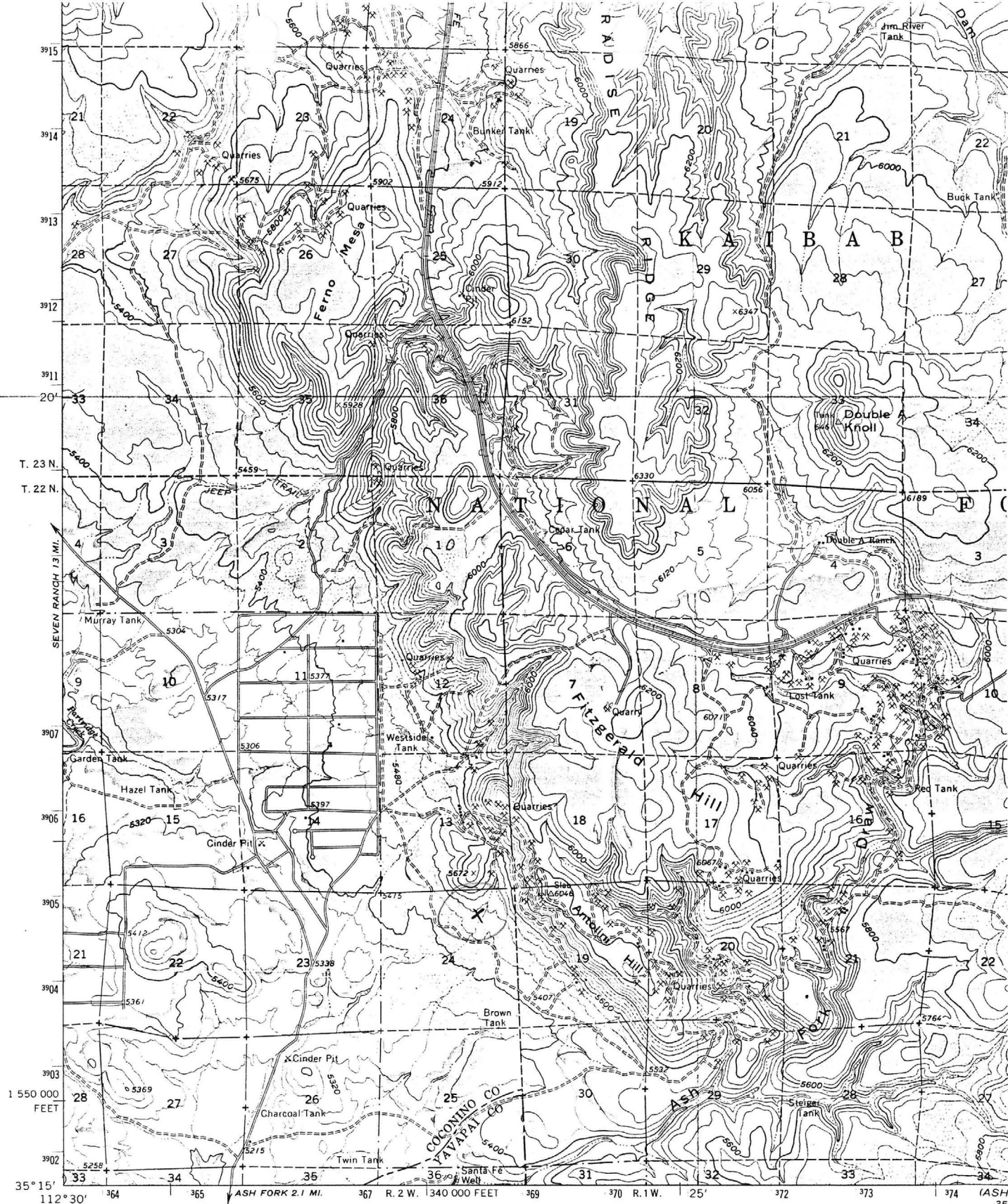
CURRENT STATUS: PRODUCER

COMMODITY:

STONE DIMENSION SS
STONE FLAGSTONE

BIBLIOGRAPHY:

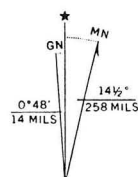
ADMMR LITTLE ROCK QUARRY FILE
ADMMR DIRECTORY OF ACTIVE MINES, 1992



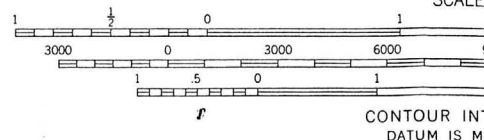
Mapped, edited, and published by the Geological Survey
in cooperation with Arizona Interstate Stream Commission
Control by USGS and USC&GS

Topography by photogrammetric methods from aerial
photographs taken 1958. Field checked 1960 and 1962

Polyconic projection. 1927 North American datum
10,000-foot grid based on Arizona coordinate system, central zone
1000-meter Universal Transverse Mercator grid ticks,
zone 12, shown in blue



UTM GRID AND 1962 MAGNETIC NORTH
DECLINATION AT CENTER OF SHEET



THIS MAP COMPLIES WITH NAT
FOR SALE BY U. S. GEOLOGICAL SURVEY, DE
A FOLDER DESCRIBING TOPOGRAPHIC MA

Hearst Mtn -15'

ABSTRACTED FROM ADMMR ACTIVE MINES DIRECTORY, 1992

BLASER CORPORATION

Blaser Stoneyard T16N R2W Sec. 22

Black Cat Quarries T22N R1W Sec. 17

Grindstone 1 & 2 T20N R1E Sec. 34

Lower Cedar Tank Quarry T22N R2W Sec. 2

Yellow Wasp No. 2 T22N R1W Sec. 9

Government Canyon Quarry T19N R2E Sec. 34

Little Rock Quarry T22N R2W Sec. 24

North Highway 89, Chino Valley, AZ 86323 - Phone 636-4454 - Employees: 40 - Processes, saws, and cuts Arizona flagstone and sandstone as flagging, dimension stone and tiles - Marketed nationwide and exported to foreign countries.

President Donald Blaser

Vice President W. Larry Blaser

Secretary/Treasurer - Mgr. Operations Dayle Blaser

Orders Marcia Stewart