



## **CONTACT INFORMATION**

Mining Records Curator  
Arizona Geological Survey  
1520 West Adams St.  
Phoenix, AZ 85007  
602-771-1601  
<http://www.azgs.az.gov>  
[inquiries@azgs.az.gov](mailto:inquiries@azgs.az.gov)

The following file is part of the

Arizona Department of Mines and Mineral Resources Mining Collection

## **ACCESS STATEMENT**

These digitized collections are accessible for purposes of education and research. We have indicated what we know about copyright and rights of privacy, publicity, or trademark. Due to the nature of archival collections, we are not always able to identify this information. We are eager to hear from any rights owners, so that we may obtain accurate information. Upon request, we will remove material from public view while we address a rights issue.

## **CONSTRAINTS STATEMENT**

The Arizona Geological Survey does not claim to control all rights for all materials in its collection. These rights include, but are not limited to: copyright, privacy rights, and cultural protection rights. The User hereby assumes all responsibility for obtaining any rights to use the material in excess of "fair use."

The Survey makes no intellectual property claims to the products created by individual authors in the manuscript collections, except when the author deeded those rights to the Survey or when those authors were employed by the State of Arizona and created intellectual products as a function of their official duties. The Survey does maintain property rights to the physical and digital representations of the works.

## **QUALITY STATEMENT**

The Arizona Geological Survey is not responsible for the accuracy of the records, information, or opinions that may be contained in the files. The Survey collects, catalogs, and archives data on mineral properties regardless of its views of the veracity or accuracy of those data.

PRINTED: 03/06/2003

ARIZONA DEPARTMENT OF MINES AND MINERAL RESOURCES AZMILS DATA

PRIMARY NAME: LITTLE NICKEL CLAIM

ALTERNATE NAMES:

GILA COUNTY MILS NUMBER: 446

LOCATION: TOWNSHIP 12 N RANGE 9 E SECTION 31 QUARTER NE  
LATITUDE: N 34DEG 23MIN 13SEC LONGITUDE: W 111DEG 26MIN 10SEC  
TOPO MAP NAME: PINE - 7.5 MIN

CURRENT STATUS: EXP PROSPECT

COMMODITY:

MOLYBDENUM

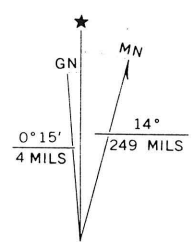
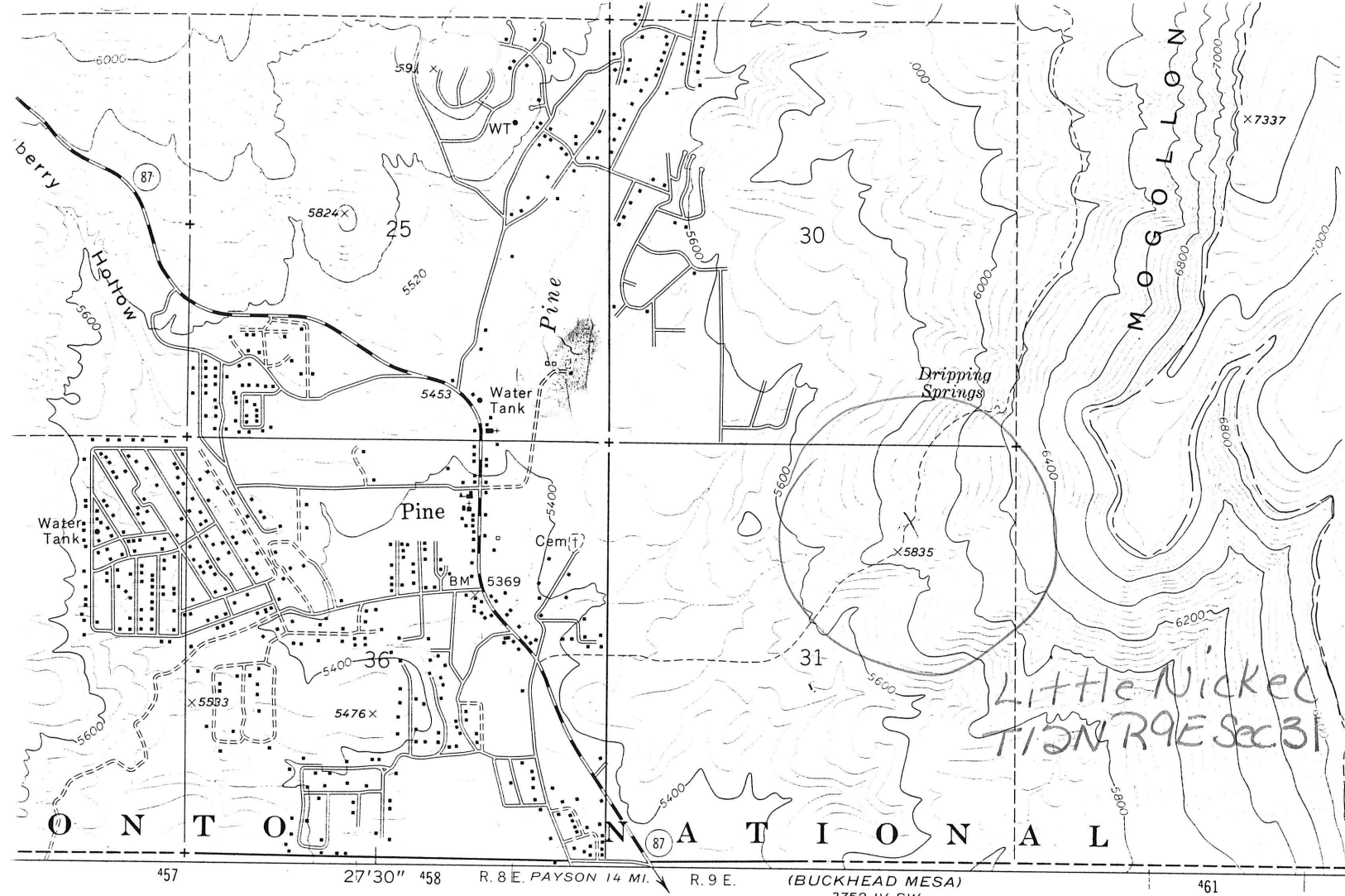
NICKEL

BIBLIOGRAPHY:

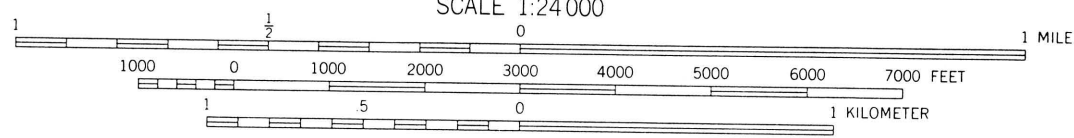
ADMMR LITTLE NICKEL CLAIM FILE

UNLIKELY AND NO DATA TO SUPPORT IT.

THIS LOCATION DOESN'T FIT THE DESCRIPTION  
OF 3 MILES SOUTH OF PINE.



JTM GRID AND 1973 MAGNETIC NORTH DECLINATION AT CENTER OF SHEET



THIS MAP COMPLIES WITH NATIONAL MAP ACCURACY STANDARDS FOR SALE BY U. S. GEOLOGICAL SURVEY, DENVER, COLORADO 80225, OR RESTON, VIRGINIA 22092 A FOLDER DESCRIBING TOPOGRAPHIC MAPS AND SYMBOLS IS AVAILABLE ON REQUEST

*Pine 7.5'*

LITTLE NICKEL CLAIM

GILA COUNTY  
T12N R9E Sec 31 NE  
MILS 446

KAP WR 1/18/78: H. Lyle Grant discussed his molybdenum-nickel prospect north of Payson. The Little Nickel Claim is located in sec. 31, T12N, G & S.R., B & M. Access is by Forest Service road, a right turn at the first cattle guard as one enters Pine from the south. The property is approximately 3 miles south of Pine. One assay for molybdenum ran 3.2%.

---