



## **CONTACT INFORMATION**

Mining Records Curator  
Arizona Geological Survey  
1520 West Adams St.  
Phoenix, AZ 85007  
602-771-1601  
<http://www.azgs.az.gov>  
[inquiries@azgs.az.gov](mailto:inquiries@azgs.az.gov)

The following file is part of the

Arizona Department of Mines and Mineral Resources Mining Collection

## **ACCESS STATEMENT**

These digitized collections are accessible for purposes of education and research. We have indicated what we know about copyright and rights of privacy, publicity, or trademark. Due to the nature of archival collections, we are not always able to identify this information. We are eager to hear from any rights owners, so that we may obtain accurate information. Upon request, we will remove material from public view while we address a rights issue.

## **CONSTRAINTS STATEMENT**

The Arizona Geological Survey does not claim to control all rights for all materials in its collection. These rights include, but are not limited to: copyright, privacy rights, and cultural protection rights. The User hereby assumes all responsibility for obtaining any rights to use the material in excess of "fair use."

The Survey makes no intellectual property claims to the products created by individual authors in the manuscript collections, except when the author deeded those rights to the Survey or when those authors were employed by the State of Arizona and created intellectual products as a function of their official duties. The Survey does maintain property rights to the physical and digital representations of the works.

## **QUALITY STATEMENT**

The Arizona Geological Survey is not responsible for the accuracy of the records, information, or opinions that may be contained in the files. The Survey collects, catalogs, and archives data on mineral properties regardless of its views of the veracity or accuracy of those data.

PRINTED: 11/19/2001

ARIZONA DEPARTMENT OF MINES AND MINERAL RESOURCES AZMILS DATA

PRIMARY NAME: LITTLE CATE

ALTERNATE NAMES:

MARICOPA COUNTY MILS NUMBER: 730

LOCATION: TOWNSHIP 7 N RANGE 3 W SECTION 33 QUARTER NW  
LATITUDE: N 33DEG 54MIN 22SEC LONGITUDE: W 112DEG 35MIN 03SEC  
TOPO MAP NAME: RED PICACHO - 7.5 MIN

CURRENT STATUS: EXP PROSPECT

COMMODITY:  
GOLD PLACER

BIBLIOGRAPHY:  
ADMMR LITTLE CATE FILE

01/23/86

ARIZONA DEPARTMENT OF MINES AND MINERAL RESOURCES FILE DATA

PRIMARY NAME: LITTLE CATE

ALTERNATE NAMES:

MARICOPA COUNTY MILS NUMBER: 730

LOCATION: TOWNSHIP 7 N RANGE 3 W SECTION 33 QTR. NW

LATITUDE: LONGITUDE:

TOPO MAP NAME: RED PICACHO 7.5

CURRENT STATUS: EXP PROSPECT

COMMODITY:

GOLD

BIBLIOGRAPHY:

ADMMR LITTLE CATE FILE

Little Cate Placer

Sample Line

Red Picacho Quad

R3W

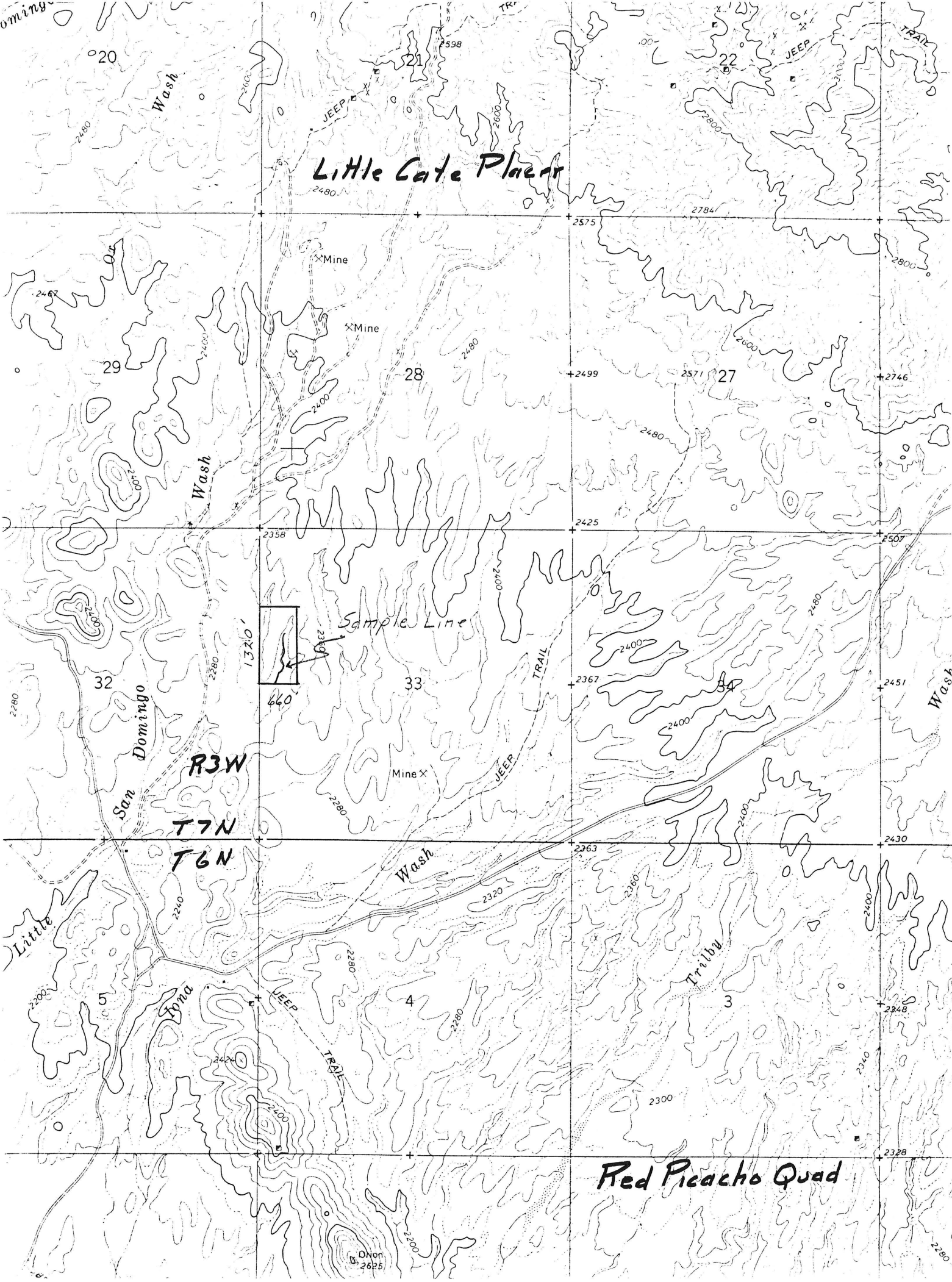
T7N

T6N

San Domingo

Trailby

ONon  
26P5



LITTLE CATE

MARICOPA COUNTY

KAP WR 12/27/85: In the company of Dick Beard a placer testing project was carried out on the Little Cate in Maricopa County. The claim which is located on State Trust lands was located December 25, 1985. Ten samples of placer material were taken from small holes in the wash and on the slope above the wash. Free gold was recovered from 6 of the samples by panning. The details of the project were prepared for the new Little Cate mine file and MILS occurrence to be created.

-----

KAP WR 5/16/86: Visited the site of the Little Cate (file) placer claim of Wally Sisler's on State Land in Sec 28, T7N R3W. There has been no activity since the preliminary sampling work done by Dick Beard and myself in December of 1985.

-----

**DEPARTMENT OF MINERAL RESOURCES**

**STATE OF ARIZONA**

**FIELD ENGINEERS REPORT**

Mine	Little Cate (Placer)	Date	December 27, 30, 1985
District	San Domingo, Maricopa County	Engineer	Ken A. Phillips Richard R. Beard
Subject:	Reconnaissance Sampling		

Summary

Claim Name: Little Cate

Claim Location:  $W\frac{1}{2}$ ,  $SW\frac{1}{4}$ ,  $NW\frac{1}{4}$ , Sec. 33, T7N, R3W

Claim Holder: Wally Sisler  
P.O. Box 21051  
Wickenburg, AZ 85358  
Phone (602) 388-2072

Land Status: State Trust Lnad

Sample Locations: Ten samples along dry wash (see attached sketch)

Sample Size: 0.41 cubic foot

Concentration Method: Panning

Assay Method: Amalgamation - Fire assay on composite of tails.

Results

Average of all samples: 0.010 oz/cubic yard

Average of samples that reached caliche: 0.026 oz/cubic yard

Composite of tails: 0.001 oz/cubic yard

### Samples & Assays

Sample No.	Concentrate Dry Wt. gm	Gold mg	Comments
1	28.16	2.90	
2	48.48	4.97	
3	31.91	0.05	on west bank
4	6.65	0.05	on east bank
5	7.48	0.19	not to caliche
6	15.13	0.04	on east bank
7	7.80	6.94	
8	30.62	0.05	not to caliche
9	17.31	34.41	
10	<u>32.60</u>	<u>0.05</u>	not to caliche
Total	226.14 gm	49.65 mg	

Composite of Tails .612 oz/ton or 4.75 mg total

### Calculations

$$\text{Sample size} \quad \frac{.41 \text{ ft}^3}{27 \text{ ft}^3/\text{yd}^3} = .0152 \text{ cubic yards}$$

All Samples

$$\frac{45.69 \text{ mg}}{10 \times .0152 \text{ yd}^3} = 326.6 \text{ mg/yd}^3$$

$$\frac{326.6 \text{ mg/yd}^3}{1000 \text{ mg/gm} \times 31.1 \text{ gm/oz}} = 0.010 \text{ oz/cu yd}$$

Samples to caliche:

Sample	Gold (mg)
1	2.90
2	4.97
7	6.94
9	<u>34.41</u>
Total	49.22

$$\frac{49.22 \text{ mg}}{4 \times .0152 \text{ yd}^3} = 809.5 \text{ mg/yd}^3$$

$$\frac{809.5 \text{ mg}}{1000 \text{ mg/mg} \times 31.1 \text{ gm/oz}} = 0.026 \text{ oz/cu. yd.}$$



BY KAP DATE 12/27/85 SUBJE

CHKD. BY DATE

SHEET NO. 2 OF 2

JOB NO.

LITTLE CATE PLACER CONT

x #5 12"

x 876

x x 776

x #6 24"

CALICHE #7 661  
AT 8"

x x

x

584

MATCH LINE

SHEET 1

