



CONTACT INFORMATION

Mining Records Curator
Arizona Geological Survey
1520 West Adams St.
Phoenix, AZ 85007
602-771-1601
<http://www.azgs.az.gov>
inquiries@azgs.az.gov

The following file is part of the

Arizona Department of Mines and Mineral Resources Mining Collection

ACCESS STATEMENT

These digitized collections are accessible for purposes of education and research. We have indicated what we know about copyright and rights of privacy, publicity, or trademark. Due to the nature of archival collections, we are not always able to identify this information. We are eager to hear from any rights owners, so that we may obtain accurate information. Upon request, we will remove material from public view while we address a rights issue.

CONSTRAINTS STATEMENT

The Arizona Geological Survey does not claim to control all rights for all materials in its collection. These rights include, but are not limited to: copyright, privacy rights, and cultural protection rights. The User hereby assumes all responsibility for obtaining any rights to use the material in excess of "fair use."

The Survey makes no intellectual property claims to the products created by individual authors in the manuscript collections, except when the author deeded those rights to the Survey or when those authors were employed by the State of Arizona and created intellectual products as a function of their official duties. The Survey does maintain property rights to the physical and digital representations of the works.

QUALITY STATEMENT

The Arizona Geological Survey is not responsible for the accuracy of the records, information, or opinions that may be contained in the files. The Survey collects, catalogs, and archives data on mineral properties regardless of its views of the veracity or accuracy of those data.

PRINTED: 07-09-2012

ARIZONA DEPARTMENT OF MINES AND MINERAL RESOURCES AZMILS DATA

PRIMARY NAME: LIMESTONE CANYON

ALTERNATE NAMES:

APACHE QUARRY
PAULDEN PROJECT
MOORE CLAIMS

YAVAPAI COUNTY MILS NUMBER: 504

LOCATION: TOWNSHIP 19 N RANGE 2 W SECTION 34 QUARTER SE
LATITUDE: N 34DEG 59MIN 10SEC LONGITUDE: W 112DEG 26MIN 10SEC
TOPO MAP NAME: PAULDEN - 7.5 MIN

CURRENT STATUS: PAST PRODUCER

COMMODITY:

CALCIUM LIMESTONE
STONE LIMESTONE CB

BIBLIOGRAPHY:

KREIGER, M.H. GEOLOGY OF PRESCOTT & PAULDEN
QUADS USGS PP 467 P 115 1967
ELEVATORSKI, E.A. 1978, AZ INDUSTRIAL MINERALS
ADMMR MINERAL RPT. NO. 2, P. 61.
CLAIMS EXTEND INTO T19N, R2W SEC 35, 36
MAP IN ADMMR COLLECTION - FRM'S PROPOSED
DRILL HOLE LOCATIONS, 1983
ADMMR LIMESTONE CANYON FILE

SHATTUCK DENN MINING CORPORATION

and

SUBSIDIARIES

.....Humboldt.....Office

Date.....March 4, 1966.....

TO: C. R. Sundeen

SUBJECT: Mrs. F. A. Moore Claims
637 Douglas Ave.
Prescott, Arizona
Phone 445-0370

FROM: J. Olaf Sund

TYPE: Gold and Silver (??)

LOCATION:

These claims are located at about 32 miles north of Prescott and 6 miles west of Highway 89 on the Bullock Road. More specifically they are located in T-19-N, and R-2-W.

GEOLOGY:

The claims are located in an area that is underlain by extensive deposits of limestone. At the claim group these limestones are part of the Redwall and Martin group, of Mississippian age. They are typical of any young limestone bed in that they are greyish to buff colored, are massive and blocky and are generally flat lying with only minor undulations in the dips of up to 15 degrees.

"SHOWING"

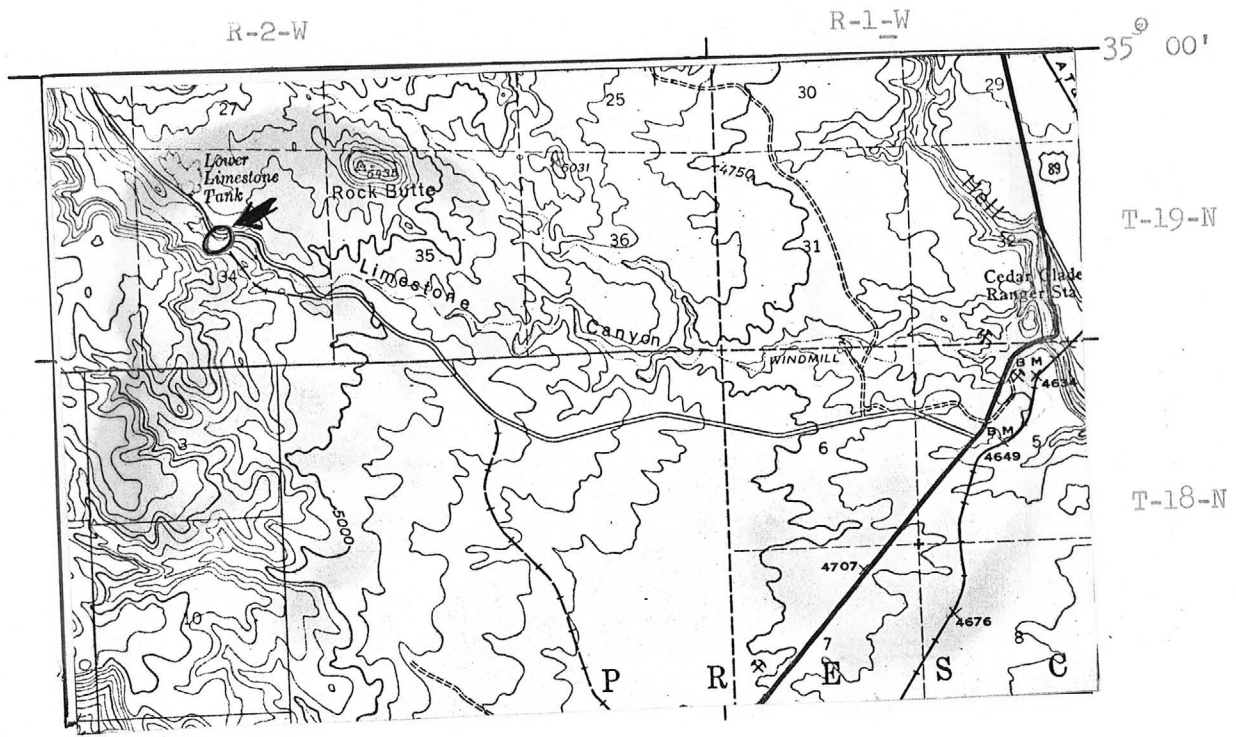
The main showing is made up of two parallel zones some 4 feet apart of slightly brecciated limestone. These zones are 5 feet and 6 feet thick, strike north 35 degrees west and dip 55 degrees north. Within each of these zones is some secondary carbonate precipitate and some rust as well as a minor amount of a quartz. Generally these zones are vuggy and spongy looking. The following samples were collected and assayed:

<u>Sample No.</u>	<u>Rock Type</u>	<u>Au</u>	<u>Ag</u>	<u>Pb</u>	<u>Cu</u>
12186	Qtz. vein in limestone	Tr	Tr	Nil	-
12187	Rusty Carbonate	Nil	Tr	Nil	-
12188	Rusty fractured carbonate	Nil	Tr	Nil	0.08
12189	Spongy limestone w/rust	Nil	Tr	Nil	-
12190	Spongy limestone w/rust	Nil	Tr	Nil	-

The above "showing" is located on the Moro Mining claim, located on March 1st, 1965 and recorded on March 3rd, 1965 in Book 352, page 564. It is specifically situated on the south side of an old railroad cut.

CONCLUSIONS:

In view of the undesirable geological setting, the lack of any significant mineralization and therefore the poor assay results nothing should be done with these claims.



LOCATION OF CLAIMS OF MRS. F. A. MOORE

1 : 62,500

Limestone Canyon

Reed Engineering

620 South Inglewood Avenue
Inglewood 1, California

Date: Feb. 18, 1965

Received from:
F. Moore

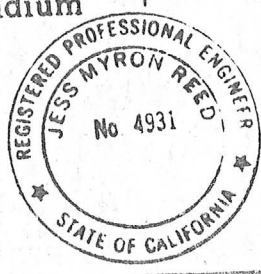
SPECTROGRAPHIC ANALYSIS

Sample No.

Approximate Values

This sample has been tested for all the following elements.

	Lbs. per ton	Value per ton	Percent		Lbs. per ton	Value per ton	Percent
Aluminum	80	.80	4	Ruthenium			
Antimony				Selenium			
Barium	1	.01	.05	Silver			
Beryllium				Sodium	10	.06	.5
Bismuth				Sulphur			
Boron				Strontium	20	.80	1
Cadmium				Tantalum			
Calcium	460	\$9.20	23	Thallium			
Carbon	150	none	7.5	Thorium			
Cesium				Tin			
Chromium	4	.20	.2	Titanium	4	.10	.2
Cobalt				Tungsten			
Columbium				Uranium			
Copper				Vanadium			
Fluorine				Zinc			
Gallium				Zirconium			
Germanium				Silicon, water, oxygen			62.25%
Hafnium				RARE EARTHS			
Indium				Cerium			
Iron	14	.17	.7	Dysprosium			
Lead				Erbium			
Lithium	trace	--	--	Gadolinium			
Magnesium	12	.18	.6	Lanthanum			
Manganese	trace	--	--	Neodymium			
Mercury	trace	--	--	Praseodymium			
Molybdenum				Samarium			
Nickle				Yttrium			
Osmium				Radioactivity		none	
Palladium				Streak		orange	
Potassium				ULTRAVIOLET FLUORESCENCE			
Rhodium				Long wave		none	
Rubidium				Short wave		none	



NOTE: Value per ton is an estimated value for raw ore, not for refined metal.

J. M. Reed
Assayer