



## **CONTACT INFORMATION**

Mining Records Curator  
Arizona Geological Survey  
1520 West Adams St.  
Phoenix, AZ 85007  
602-771-1601  
<http://www.azgs.az.gov>  
[inquiries@azgs.az.gov](mailto:inquiries@azgs.az.gov)

The following file is part of the

Arizona Department of Mines and Mineral Resources Mining Collection

## **ACCESS STATEMENT**

These digitized collections are accessible for purposes of education and research. We have indicated what we know about copyright and rights of privacy, publicity, or trademark. Due to the nature of archival collections, we are not always able to identify this information. We are eager to hear from any rights owners, so that we may obtain accurate information. Upon request, we will remove material from public view while we address a rights issue.

## **CONSTRAINTS STATEMENT**

The Arizona Geological Survey does not claim to control all rights for all materials in its collection. These rights include, but are not limited to: copyright, privacy rights, and cultural protection rights. The User hereby assumes all responsibility for obtaining any rights to use the material in excess of "fair use."

The Survey makes no intellectual property claims to the products created by individual authors in the manuscript collections, except when the author deeded those rights to the Survey or when those authors were employed by the State of Arizona and created intellectual products as a function of their official duties. The Survey does maintain property rights to the physical and digital representations of the works.

## **QUALITY STATEMENT**

The Arizona Geological Survey is not responsible for the accuracy of the records, information, or opinions that may be contained in the files. The Survey collects, catalogs, and archives data on mineral properties regardless of its views of the veracity or accuracy of those data.

PRINTED: 01-31-2013

ARIZONA DEPARTMENT OF MINES AND MINERAL RESOURCES AZMILS DATA

PRIMARY NAME: LIGURTA MILL

ALTERNATE NAMES:  
EMPIRE 1-14

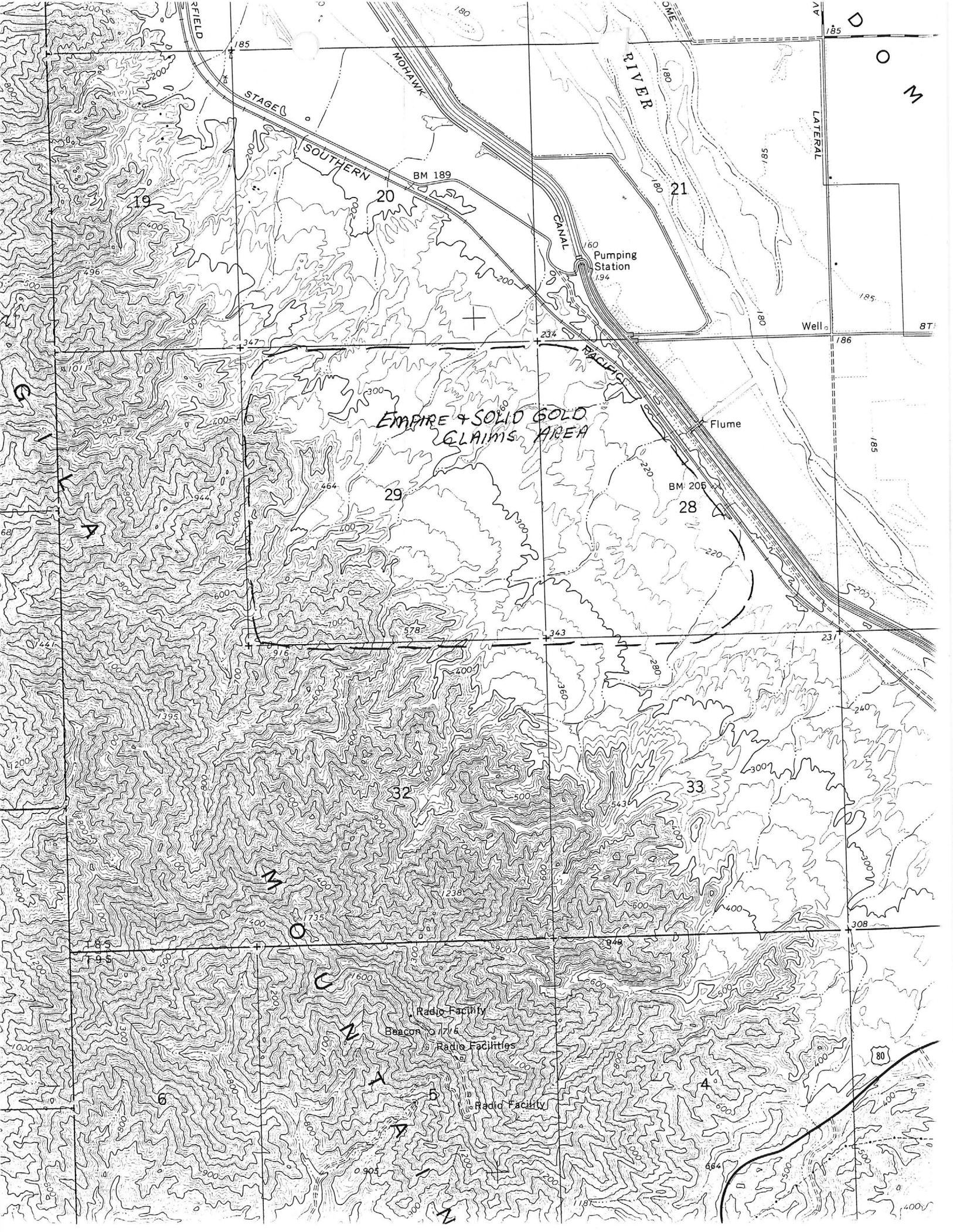
YUMA COUNTY MILS NUMBER: 782

LOCATION: TOWNSHIP 8 S RANGE 20 W SECTION 28 QUARTER W2  
LATITUDE: N 32DEG 41MIN 59SEC LONGITUDE: W 114DEG 19MIN 47SEC  
TOPO MAP NAME: LIGURTA - 7.5 MIN

CURRENT STATUS: UNKNOWN

COMMODITY:  
MILL

BIBLIOGRAPHY:  
ADMMR LIGURTA MILL



LIGURTA MILL

YUMA COUNTY

NJN WR 3/18/88: John James, chemical engineer with Gold Dome Mining (card) called seeking permit requirements for a 150,000 ton cyanide heap leach operation in the Dome Valley, Yuma County. The property consists of the Gold Pieces 1 - 32, located in T8S R20W Sec 19 and the Silent Gold 1 - 32, located in T8S R20W Sec 29. These claims are adjacent to AZMILS Ligurta Mill (file) Yuma County, previously held by Gold Dome Mining. The Silent Gold claims consist of both lode and placer. When Mr. James supplies promised data on these claims they will be added to AZMILS. Mr. James reported that a pilot run two years ago showed an 80% recovery however, additional testing revealed a percolation problem due to high clay content.

---

FROM: Ken A. Phillips, Mineral Resource Engineer

TO: File

DATE: February 4, 1983

Company: <sup>n/c</sup>  
Gold Dome Mining Company  
Welton, Arizona  
Telephone: 785-4006

Information from a variety of sources and rumors:

Mine: Empire #1-14 (AMC#164899+) unpatented claims  
Silent Gold # -36 (AMC #186503+) unpatented claims

Locators: Empire #1-14 Ms. Leslie Charles and Mr. Gene Stowe  
Silent Gold #1-36 Mr. Gene Stowe

Location: Portions of Sections 28 and 29, T8S, R20W

Pertinent People and Organizations:

Gene Stowe Claim Owner  
Leslie Charles Claim Owner

Lee Garnsey  
Knute Peterson

Reportedly lease the claims and operate the Carnsey-Peterson process on the claims. They are currently raising money from investors and buyers of operating sections.

Bob Holiday  
Gene Stowe (formerly with John Isabel)  
James W. Lower

et Hecle →

Reportedly involved with J & J Research and Development, 2027 S. McQueen Road, Mesa, Arizona Phone 892-4561. This firm is reportedly the organization which developed the top secret process to recover the "colloidal" gold.

Sixteenth Development Inc:

Reportedly involved in some manner in the over all operation and/or organization.













