



CONTACT INFORMATION

Mining Records Curator
Arizona Geological Survey
1520 West Adams St.
Phoenix, AZ 85007
602-771-1601
<http://www.azgs.az.gov>
inquiries@azgs.az.gov

The following file is part of the

Arizona Department of Mines and Mineral Resources Mining Collection

ACCESS STATEMENT

These digitized collections are accessible for purposes of education and research. We have indicated what we know about copyright and rights of privacy, publicity, or trademark. Due to the nature of archival collections, we are not always able to identify this information. We are eager to hear from any rights owners, so that we may obtain accurate information. Upon request, we will remove material from public view while we address a rights issue.

CONSTRAINTS STATEMENT

The Arizona Geological Survey does not claim to control all rights for all materials in its collection. These rights include, but are not limited to: copyright, privacy rights, and cultural protection rights. The User hereby assumes all responsibility for obtaining any rights to use the material in excess of "fair use."

The Survey makes no intellectual property claims to the products created by individual authors in the manuscript collections, except when the author deeded those rights to the Survey or when those authors were employed by the State of Arizona and created intellectual products as a function of their official duties. The Survey does maintain property rights to the physical and digital representations of the works.

QUALITY STATEMENT

The Arizona Geological Survey is not responsible for the accuracy of the records, information, or opinions that may be contained in the files. The Survey collects, catalogs, and archives data on mineral properties regardless of its views of the veracity or accuracy of those data.

PRINTED: 03/06/2003

ARIZONA DEPARTMENT OF MINES AND MINERAL RESOURCES AZMILS DATA

PRIMARY NAME: LIGIER RED MARBLE QUARRY

ALTERNATE NAMES:

DRAGOON MARBLE QUARRY
NATIONAL MARBLE PLACERS

COCHISE COUNTY MILS NUMBER: 787

LOCATION: TOWNSHIP 16 S RANGE 23 E SECTION 27 QUARTER NE
LATITUDE: N 32DEG 01MIN 10SEC LONGITUDE: W 109DEG 59MIN 05SEC
TOPO MAP NAME: COCHISE - 7.5 MIN

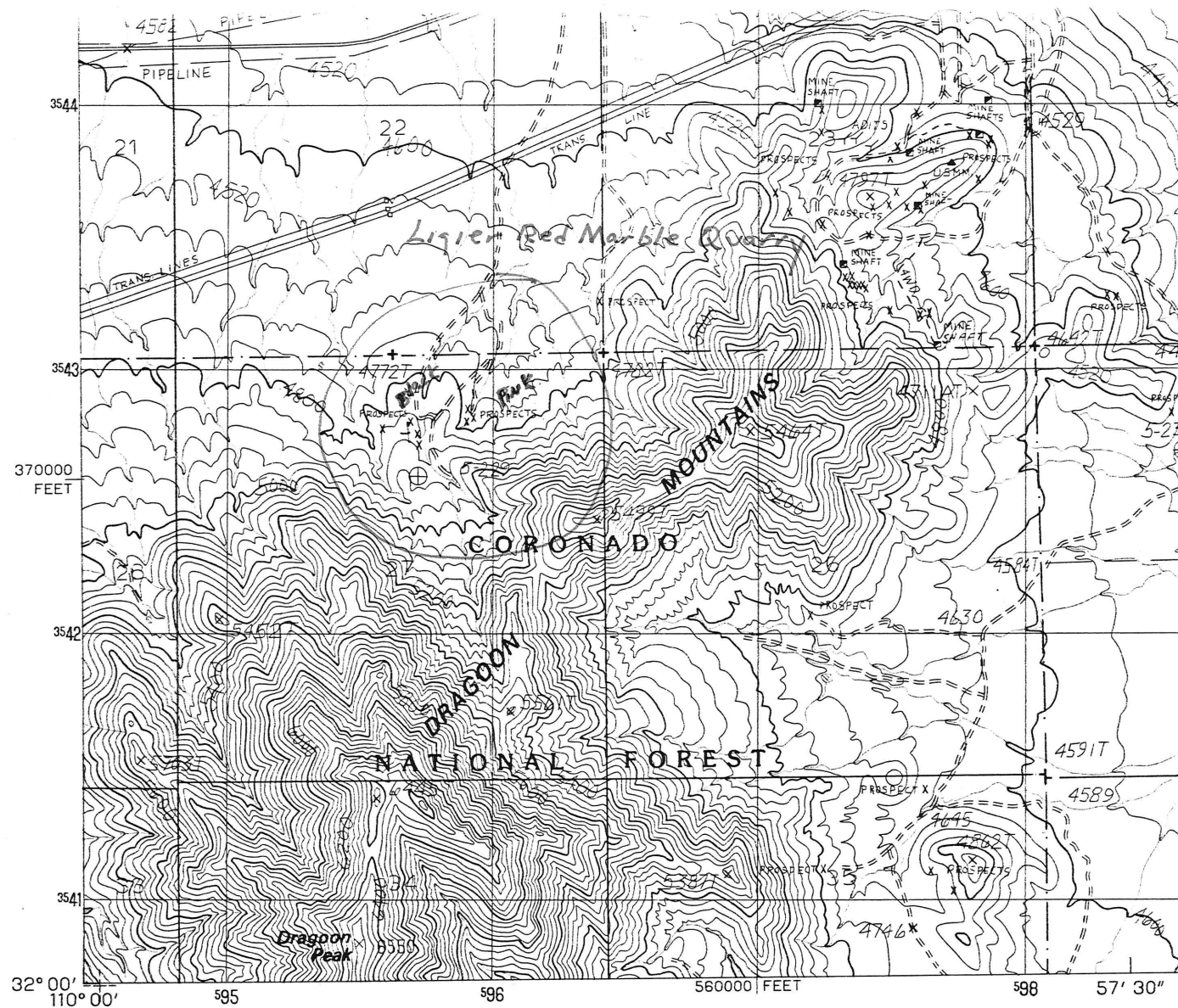
CURRENT STATUS: PAST PRODUCER

COMMODITY:

STONE MARBLE
CALCIUM MARBLE

BIBLIOGRAPHY:

ADMMR LIGIER RED MARBLE QUARRY FILE
BAIN, GEORGE W., 1963, MARBLE OCCURRENCES IN
THE DRAGOON PASS AREA, IN GEOL FILE



PRODUCED BY THE UNITED STATES GEOLOGICAL SURVEY
 CONTROL BY USGS, NOS/NOAA
 COMPILED FROM AERIAL PHOTOGRAPHS TAKEN 1978
 FIELD CHECKED 1979 MAP EDITED 1985
 PROJECTION TRANSVERSE MERCATOR
 GRID: 1000-METER UNIVERSAL TRANSVERSE MERCATOR ZONE 12
 10,000-FOOT STATE GRID TICKS. ARIZONA, EAST ZONE
 UTM GRID DECLINATION 0°34' EAST
 1985 MAGNETIC NORTH DECLINATION 12' EAST
 VERTICAL DATUM NATIONAL GEODETIC VERTICAL DATUM OF 1929
 HORIZONTAL DATUM 1927 NORTH AMERICAN DATUM
 To place on the predicted North American Datum of 1983,
 move the projection lines as shown by dashed corner ticks
 (8 meters south and 60 meters east)

There may be private inholdings within the boundaries of any
 Federal and State Reservations shown on this map
 Where omitted, land lines have not been established

PROVISIONAL MAP
 Produced from original
 manuscript drawings. Infor-

LIGIER RED MARBLE QUARRY

COCHISE COUNTY

HEM WR 8/13/88: The Ligier Red Marble Quarry, Cochise County was visited. Past production from this site appears to have primarily for crushed landscape stone. The northeastern most prospect cuts in section 27 exploits pink and pinkish grey weakly marbleized limestone with beds .5 to 1.5 feet thick with green and brown shale partings. The shale and some limestone contain moderately large fusulinids. Beds strike N-S and dip about 20° west. Bedding plane faulting is evident above this section to the west. This area has good potential to develop additional resources of pinkish marble but fracturing and the thin bedded nature may preclude its use for anything but crushed landscape stone. West of these prospects about a thousand feet, another group of workings has produced some black to dark grey marble for use as building stone. The weakly marbleized limestone is cut by calcite veinlets and is streaked with reddish hematite. The 4-6" beds are naturally sized, more or less, as small blocks suitable for building. Other beds of pinkish limestone are within this dequence and further prospecting may reveal additional resources. The quarter section is held under claim by the Ligier estate.

PAGE 02
LEROY KISSINGER
Paul Claims (+)
Ligier Marble Quarry (file)
Cochise County

Habitat (cont)

to sustain the cattle and livestock that are now allowed to graze on your national forest lands. What about the wild life that is rapidly in decline? What would be left for the sportsmen for game?

this area is our home. We have chosen to live here for many reasons. It's natural beauty and undeveloped terrain is something we can all treasure. Our home and water is worth saving, let us join together and stop the marble mine that would destroy our homelands. It must be done. We, the people have a right to clean air, soil, and water. DMPC seeks to preserve those common God given rights.

Use your power to help stop the
Callix Mining Company

Together we can preserve the
Draoon Mountains by doing the
following:

- * sign a petition
- * make a call/write a letter, let your government know you care about your public treasure
- * come to our next meeting

Dragoon Mountain Preservation Coalition

**PO Box 214
Dragoon, AZ. 85609**

wray@vtc.net

(520) 586-3751

(520)826-3698

US Representative Jim Kolbe
77 Calle Portal B-160
Sierra Vista, AZ. 85635
(520) 459-3115
jim.kolbe@mail.house.gov

Governor Jane Hull
1700 W. Washington
Phoenix, AZ. 85007
comments: 1-800-853-0883
azgov@gv.state.az.us

Cochise County Government
1415 W. Melody Lane
Bisbee, AZ. 85603
1-800-635-7296
Badmin@co.cochise.az.us

Duane Bennett
Coronado National Forest
5990 S. Highway 92
Hereford, AZ. 85615

Dragoon Mountain Preservation Coalition

Mining threatens the little town of Dragoon and the Dragoon Mountain Range.

Our coalition aims to stop the
proposed 160 acre open pit marble
mine on Dragoon Mt. just south of
Interstate 10 exit 318. 5 mi

Not
ACURATE } A foreign company is seeking a
permit from the US Forest Service
to mine & crush marble for use in
decorative stone and plastic
composites.

We share interest only in abundant
clean water, air and land.
Sportsmen, agriculturists, ranchers,
recreationists, history lovers, nature
lovers and visitors alike.

Purpose

To preserve the Dragoon Mountains as they are now for us and for the future generations that will follow. The proposed marble mine would destroy the mountain area leaving a deep gaping hole. The mine company 'says' the hole will only be 300 feet deep. They say the will rip only 300 feet of the side-wall off the mountain, above the pit. Yet the company is asking for a permit to mine over 160 acres. This is only the start, as far as mining goes. First one mountain, then the next and on and on, like the foreign companies continue to do in Appalachia. I-historically, once permitted, mining companies don't have to go through the public hearing process again, and they can bash and wheel away the mountains bit by bit, for years and years down the road. Is the what the US Forest Service is willing to allow? DMPC is not willing to allow the destruction of these beautiful mountains.

Background

A foreign company named Caltex seeks to mine great quantities of marble from the Dragoon Mountains. The foreign company will use this marble for plastics.

Not True

The lands were set aside by the United States to preserve the wilderness. Now the Forest Service is asked to allow a foreign company to pillage the resources.

Jobs

Foreign mining companies usually bring their own trained workers to accomplish their goal. The capital made from this opportunistic venture will go back to Europe, leaving our community with the destruction and clean up. Our tax dollars should go to protect and preserve our lands. Will we allow what belongs to all of us to be given to a foreign company, a company that will destroy the beautiful and majestic mountains.

History

These lands were the ancestral lands of the Chiricahua Nation (people of the mountains). The sacred mountain spirits lived in every mountain top and were the messengers of God, bringing protection and guidance to the people. The Chiricahuas lived harmoniously with mother nature and the mountains are sacred to them. The deforestation in the region took place in the mid 1800's. The wood was needed for mining, the railroad and the development of Tombstone and other settlements in Cochise County. The

This a stretch -

juniper, cedar, mesquite were cut down for heating and the pine forest never replanted. The damage is visible to this day. Before the mid 1800's the annual rainfall was 21 inches. Now reduced to 3 or 4 inches. This is due to the deforestation of the mountain areas and the damage to the bio diversities of the high deserts. All this damage is irreparable. Many lives were sacrificed as the take over unfolded and history marched on taking the native, grey wolf, antelope, jaguar, medicinal plants, grasslands, gold, silver and the spirit along with it. What will be left for the children? What about the tourist who comes to see the native and the vastness of the land that no longer exists in Europe. The next generation will demand solutions, not lies or neglect.

Habitat

The lesser long nose bat, an endangered species lives at an undisclosed location in the Dragoon Mountains and feeds on the agave plant that grows there. Is there enough water resources in this region to supply mining, farming, ranching, golf courses, theme parks or massive development? Will there be enough water

neither true

What?

Not True

45629

Pu/Claims(f)
Dr
Ligier Red Marble Quarry
(file)
Cochise Co.
ALPHA CALCIT ARIZONA, LTD.

10645 N. Tatum Boulevard, Suite C-2, 601; PHOENIX, Arizona 85028-3063
Phone & Fax (602) 840 - 0414, E-mail DRBKOE@swlink.net

August 25, 2000

Ken Phillips, Chief Engineer
AZ Dept. of Mines and Mineral Resources
1502 West Washington
Phoenix, AZ 85007

Re: "Dragoon Mountain Preservation Coalition" Misinformation.

Dear Mr. Phillips:

"Mining threatens the little town of Dragoon..." complains a brochure and letters sent to politicians and government administrations. The complaint is based on misinformation and intentional falsehoods designed to create an emotional reaction by the recipient. In contrast to the fantasies presented point by point by the "Coalition's" pamphlet we give in the following a brief summary of what the Alpha Calcit Mine Operating Plan really proposes:

- 1) The proposed marble quarry will expand the existing quarry in Section 33 Township 16 South Range 23 East from its present visible size to an overall quarry that measures approximately 300 feet by 1,200 feet (**Less than 10 acres!**) NOT THE 160 ACRES SUGGESTED BY THE PAMPHLET. Further the quarry is visible and will be visible from the I-10 Willcox - Benson for a short distance, but is a little more than 5 miles from the Interstate as the crow flies. The quarry is over 2 miles from the village of Dragoon and over one mile from the closest neighbor (one single home). Access to the quarry will be along existing public and Forest Service roads from the paved Dragoon road.

The operation will be quite small. The total of the maximum **yearly** production will be **less** than the **daily** production of one of the average Arizona copper mines.

As an added fact, the mining claims on which the operation will be conducted were first located in 1881 by the Ancestral Liguere family, and have been maintained legally since that date by the Liguere Heirs and the current owners, a local family. Mining of marble has been conducted at different times throughout that period, with the latest production during the latter half of the 1980's.

- 2) Alpha Calcit Arizona, LTD is a wholly owned subsidiary of the Cologne, Germany, based company Alpha Calcit Fuellstoff (= fillers) Co. The Arizona company has been established for the specific pupose to develop limestone/marble properties in the US. The proposed Dragoon mine is the first such venture. The company is in the process of preparing a Mine Operating Plan for approval by the U. S. Forest Service and other

Federal and State agencies who have regulatory authority over such operations. The products from the Dragoon Quarry and supporting mill facilities (appr. 4 miles from Dragoon near the railroad tracks) will primarily be finely ground calcium carbonate to be marketed as mineral fillers used in a variety of manufactured products in the US. In addition, by products of crushed and ground marble will be sold for such things as mineral for livestock feed, swimming pool sand, golf course sand, and with the agreement from the U.S.F.S., crushed aggregate for landscaping and similar uses.

- 3) Alpha Calcit Arizona has an interest in operating a marble quarry with the absolute **minimum impact** on any and all facets of the surrounding **environment**. This operation will be conducted with the same care for plants, animals, culture, air, water and all the things which make up the environment of the area, just as the parent company conducts its mine and milling operations in seven quarries located in five European and Near East Countries. A photo brochure prepared to illustrate some of the European operations is on file with the Coronado National Forest Service offices in Tucson that show how a reputable company operates in a delicate environment without destroying nature's balance.
- 4) Under the title "**PURPOSE**" the coalition pamphlet describes incorrectly what "may" happen to the area if the operating plan is approved. The facts are that there will be no "gaping hole". In reality the plan describes a quarrying operation that will remove a wedge of rock from the mountain side that will traverse from the valley bottom to about one half way up the mountain, that is about 300 feet thick and 1,200 feet long. This wedge will be centered on the existing open exposed quarry. As stated above the areal extent of the quarry will be less than ten (10) acres, NOT the 160 mentioned in the pamphlet.
Further, any expansion of this operating plan will require submission and review of a complete new operating plan that will require public comment and ultimate approval by the regulatory authorities. Likewise any new mine would have to follow the same procedure.
The quarry will be developed in at least three separate segments, with each segment mined out completely. When the next segment is opened, reclamation and replanting of the previous segment will start so that at any given point in time, there will be only one third of ten acres exposed. The reclamation will consist of creating narrow benches that will be revegetated with all native plants to restore the slope to a condition very similar to its present state (with the present exposed quarry reclaimed with the other segments!).
- 5) Under the title "**Background**" the coalition describes again the incorrect information regarding the use of the rock that will be mined from the quarry. Further, the pamphlet is totally incorrect in the description of the status of the land in question where this operation will be located. In fact these lands have not been set aside. They are a part of the Coronado National Forrest, and under the mining act of 1872 as revised, are open to mineral location and production just as any other U. S. Forest and BLM lands in these United States. The claims are held by a U. S. citizen residing in Cochise County, Arizona who has rights to, and for these claims, superior to the rights of any

other citizen. The claim holder has made a completely legal agreement with a company which has established a Corporate presence in the State of Arizona wherein they have a right to conduct business in the State and in the United States of America. No lands or any rights of any other citizen are being taken advantage of in the form of "pillaging".

- 6) Under the title "**Jobs**" the coalition again errs badly in their description of the potential for job creation. In reality only the General Manager of the project will be from Germany. All other personnel will be recruited from available workers in Cochise County and nearby towns and cities of Southern Arizona. There will be a total workforce of approximately twenty (20) positions, all of which will be paid at a level comparable to other mining operations in Arizona. The Arizona headquarters of Alpha Calcit Arizona will be located at Willcox, with the mine management at the Quarry and Mill sites. The resultant increase in the tax base of Cochise County, the towns nearby and the State will be significant. The County will take on additional road maintenance work for the public roads, but the taxes paid by the project will exceed that cost.
- 7) Under the title "**History**", the coalition describes a sorry history of exploitation during the past 400 plus years since the Spanish first set foot on these lands. However, history has taken on a revised "reality" during the recent decades of the 20th century. The land is now a part of the United States of America, the State of Arizona and Cochise County and as part of the Coronado National Forest is open to mineral claiming by citizens of the US. No historical account of what has happened, real or imagined, can change that fact.
- 8) Under the title "**Habitat**", the coalition fears great harm to wildlife, cattle grazing and other users of the natural habitat of the area. While there may be a temporary disturbance to plants and animals within the boundaries of the operation, it is factual that both plants and animals adjust to such interruptions quite well. With proper reclaiming of the land, the wildlife will return to the area after mining is complete. In regard to the **water** resources of the area, very little water will be used by this project. Beyond water for domestic purposes, only a minimal spray will be used in dust control at the mining, crushing and sorting operations, particularly, as most of these installations are closed so that the dust can be reclaimed for use. The mill for fine grinding will be on private land, and will use only minimal water. All these installations are closed for the purpose of **dust and noise reduction**. Groundwater protection will be done according to regulations. Dust control on roadways will be accomplished by using a dust free surfacing. No well development will be necessary so that no interference with existing water production will occur. The water that is needed will be imported from outside sources.
The maximum interruption of the daily lives of some neighbors will be from **traffic** on the access road to the quarry site. This will be tightly regulated by the company so as to cause the absolute minimum of discomfort to the lives of the people of Dripping Springs. Workmen will use as few as possible number of automobiles for transportation. The

material which will be transported to the fine grinding mill, will fill less than ten (10) trucks per day.

Please, remember that the U. S. Forest Service is not an advocate for either side of this controversy. They are the agency assigned to make sure that the laws and regulations of the United States are complied with. All of the information regarding this project proposal will be submitted to the Forrest Service as the application is completed. It will be available for review by the public at any time after that.

If there is a need for additional information not contained herein you may also contact either Mr. Leroy E. Kissinger, Mining Consultant, Geologist, retired Director of the Arizona Department of Mining and Mineral Resources, by telephone at (520) 531-9297 or by fax at (520) 531-8097 in Tucson, or Mr. Berthold K. Koester, Dr. of Laws, by telephone and fax at (602) 840-0414 in Scottsdale. These men are authorized to exclusively represent Alpha Calcit Arizona, Ltd. in Arizona.

Very sincerely,

Alpha Calcit Arizona, Ltd.



Leroy E. Kissinger
Consultant