



CONTACT INFORMATION

Mining Records Curator
Arizona Geological Survey
1520 West Adams St.
Phoenix, AZ 85007
602-771-1601
<http://www.azgs.az.gov>
inquiries@azgs.az.gov

The following file is part of the

Arizona Department of Mines and Mineral Resources Mining Collection

ACCESS STATEMENT

These digitized collections are accessible for purposes of education and research. We have indicated what we know about copyright and rights of privacy, publicity, or trademark. Due to the nature of archival collections, we are not always able to identify this information. We are eager to hear from any rights owners, so that we may obtain accurate information. Upon request, we will remove material from public view while we address a rights issue.

CONSTRAINTS STATEMENT

The Arizona Geological Survey does not claim to control all rights for all materials in its collection. These rights include, but are not limited to: copyright, privacy rights, and cultural protection rights. The User hereby assumes all responsibility for obtaining any rights to use the material in excess of "fair use."

The Survey makes no intellectual property claims to the products created by individual authors in the manuscript collections, except when the author deeded those rights to the Survey or when those authors were employed by the State of Arizona and created intellectual products as a function of their official duties. The Survey does maintain property rights to the physical and digital representations of the works.

QUALITY STATEMENT

The Arizona Geological Survey is not responsible for the accuracy of the records, information, or opinions that may be contained in the files. The Survey collects, catalogs, and archives data on mineral properties regardless of its views of the veracity or accuracy of those data.

PRINTED: 11/19/2001

ARIZONA DEPARTMENT OF MINES AND MINERAL RESOURCES AZMILS DATA

PRIMARY NAME: LAST MINUTE

ALTERNATE NAMES:

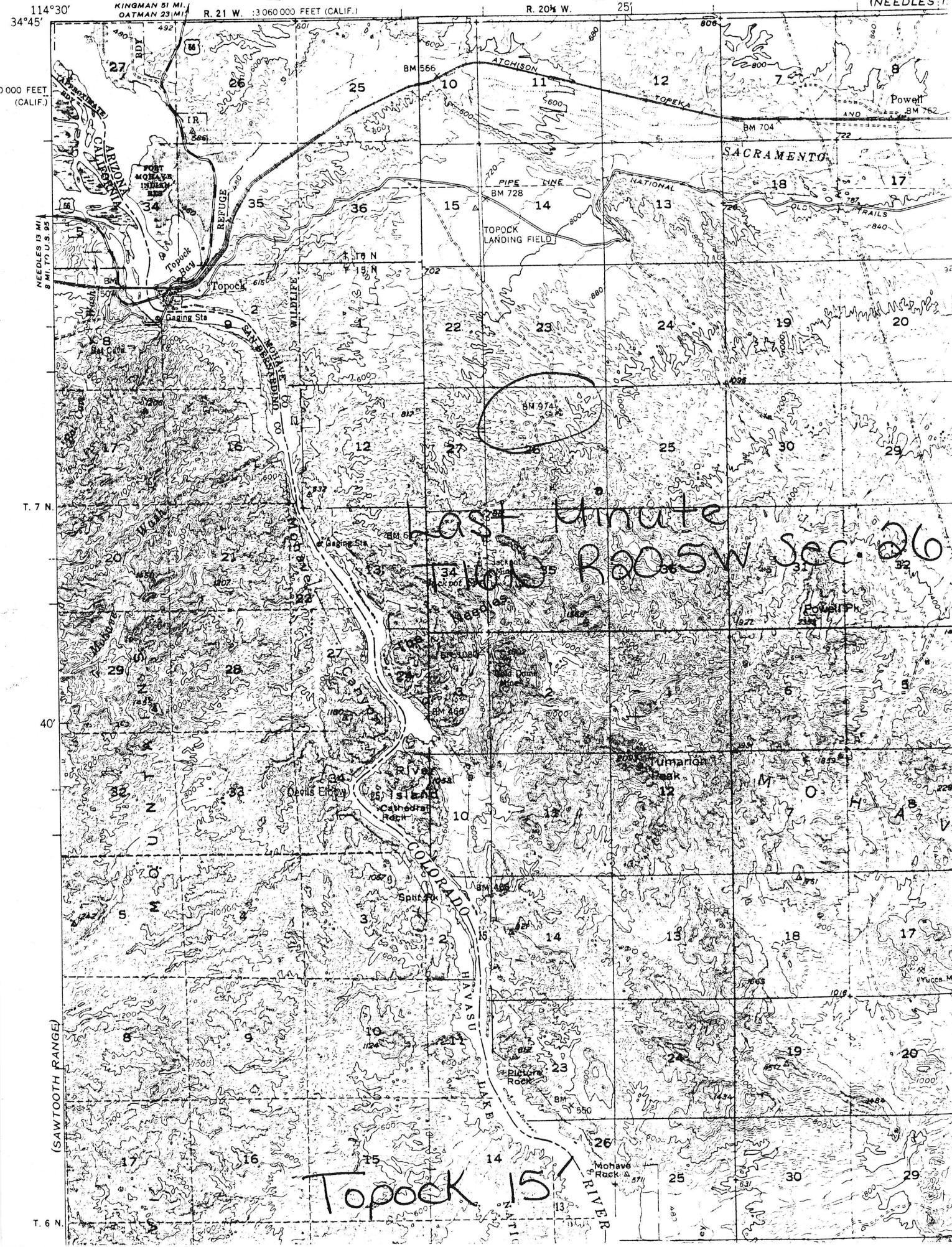
MOHAVE COUNTY MILS NUMBER: 309A

LOCATION: TOWNSHIP 16 N RANGE 20.5W SECTION 26 QUARTER --
LATITUDE: N 34DEG 41MIN 50SEC LONGITUDE: W 114DEG 25MIN 50SEC
TOPO MAP NAME: TOPOCK - 7.5 MIN

CURRENT STATUS: EXP PROSPECT

COMMODITY:
COPPER OXIDE

BIBLIOGRAPHY:
ADMMR LAST MINUTE MINE FILE



DEPARTMENT OF MINERAL RESOURCES
STATE OF ARIZONA
FIELD ENGINEERS REPORT

FILED

APR 21 1966

Mine Last Minute or Logas Prospect (Cu) Date March 9, 1966
District Topock, Mohave Co. Engineer F. T. Johnson
Subject: Visit of March 3, 1966

Ownership: ed E.L. Logas, Logasville, Kingman. 16 unpatented claims. Property was option/to Otis Causey of Oatman.

Location: Claims are in Sec. 26, T. 16 N., R. 20 $\frac{1}{2}$ W. (Topock district) and reached from the Powell Peak Rd. that traverses the claims N-S.

General Geology: The south end of the claims is principally meta-andesite with more basic dikes in abundance. Most of the work has been in the north end of the claims where sparse mineralization is associated with diabase dikes that have intruded the gneiss. An area of about 20 acres had been bulldozed and stripped of a shallow overburden (6" to 1 ft.). This did not extend the more or less impoverished mineralization.

A small shaft or location hole had the most mineralization along a 45° S dipping fault but this had not been prospected to any extent. Copper minerals noted were chrysocolla and some malachite. Alteration was negligible. Mr. Causey is reported to have spent in excess of \$5000 on dozer work.