



CONTACT INFORMATION

Mining Records Curator
Arizona Geological Survey
1520 West Adams St.
Phoenix, AZ 85007
602-771-1601
<http://www.azgs.az.gov>
inquiries@azgs.az.gov

The following file is part of the

Arizona Department of Mines and Mineral Resources Mining Collection

ACCESS STATEMENT

These digitized collections are accessible for purposes of education and research. We have indicated what we know about copyright and rights of privacy, publicity, or trademark. Due to the nature of archival collections, we are not always able to identify this information. We are eager to hear from any rights owners, so that we may obtain accurate information. Upon request, we will remove material from public view while we address a rights issue.

CONSTRAINTS STATEMENT

The Arizona Geological Survey does not claim to control all rights for all materials in its collection. These rights include, but are not limited to: copyright, privacy rights, and cultural protection rights. The User hereby assumes all responsibility for obtaining any rights to use the material in excess of "fair use."

The Survey makes no intellectual property claims to the products created by individual authors in the manuscript collections, except when the author deeded those rights to the Survey or when those authors were employed by the State of Arizona and created intellectual products as a function of their official duties. The Survey does maintain property rights to the physical and digital representations of the works.

QUALITY STATEMENT

The Arizona Geological Survey is not responsible for the accuracy of the records, information, or opinions that may be contained in the files. The Survey collects, catalogs, and archives data on mineral properties regardless of its views of the veracity or accuracy of those data.

PRINTED: 11/19/2001

ARIZONA DEPARTMENT OF MINES AND MINERAL RESOURCES AZMILS DATA

PRIMARY NAME: LAKE PLEASANT RHYOLITE

ALTERNATE NAMES:

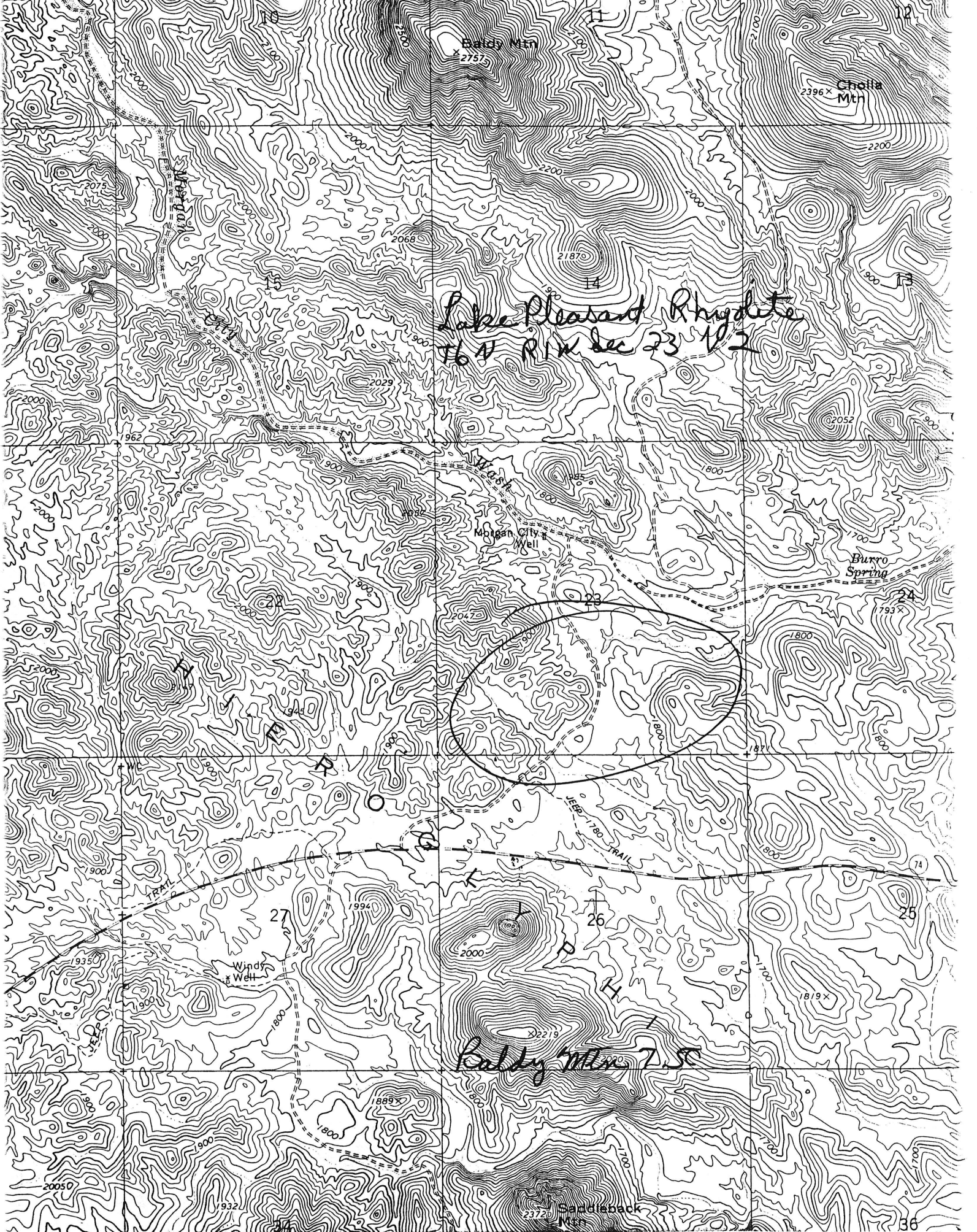
MARICOPA COUNTY MILS NUMBER: 627

LOCATION: TOWNSHIP 6 N RANGE 1 W SECTION 23 QUARTER N2
LATITUDE: N 33DEG 50MIN 50SEC LONGITUDE: W 112DEG 20MIN 00SEC
TOPO MAP NAME: BALDY MTN - 7.5 MIN

CURRENT STATUS: RAW PROSPECT

COMMODITY:
PUMICE

BIBLIOGRAPHY:
ADMMR LAKE PLEASANT RHYOLITE FILE



LAKE PLEASANT RHYOLITE

MARICOPA COUNTY

NJN WR 11/1/85: Call to Cliff Johnson, Stewart and Johnson Mining Co (c) and discussed their Lake Pleasant Rhyolite (new) occurrence in Maricopa Co. It is covered by the Lake Pleasant Rhyolite #1-14 Claims which are located in T6N R1W Sec 23 N2. The material here is similar to the pumicite produce from their Arizona Rhyolite (f) deposit in Pinal County which is used as a light-weight aggregate. Although some sampling has been done, there has been no production from the deposit.

Arizona Department of Mines and Mineral Resources

VERBAL INFORMATION SUMMARY

1. Information from: Burt of Chemstone
2. Address: 2215 W. Mountain view, Phoenix, AZ 85021
3. Phone: 997-2013 or 1-800-223-3155
4. ADMMR file: Lake Pleasant Rhyolite
5. County: Maricopa
6. Summary of information received:

In an effort to find a source of pumice for use in "stone washing" denim fabric, David L. Bellaire of the above company has visited the Lake Pleasant Rhyolite deposit to obtain samples. The pumaceous rhyolite is neither scoriaceous enough or lightweight to replace pumice.

Date: 3/21/89

Engineer: Ken A. Phillips