



CONTACT INFORMATION

Mining Records Curator
Arizona Geological Survey
1520 West Adams St.
Phoenix, AZ 85007
602-771-1601
<http://www.azgs.az.gov>
inquiries@azgs.az.gov

The following file is part of the

Arizona Department of Mines and Mineral Resources Mining Collection

ACCESS STATEMENT

These digitized collections are accessible for purposes of education and research. We have indicated what we know about copyright and rights of privacy, publicity, or trademark. Due to the nature of archival collections, we are not always able to identify this information. We are eager to hear from any rights owners, so that we may obtain accurate information. Upon request, we will remove material from public view while we address a rights issue.

CONSTRAINTS STATEMENT

The Arizona Geological Survey does not claim to control all rights for all materials in its collection. These rights include, but are not limited to: copyright, privacy rights, and cultural protection rights. The User hereby assumes all responsibility for obtaining any rights to use the material in excess of "fair use."

The Survey makes no intellectual property claims to the products created by individual authors in the manuscript collections, except when the author deeded those rights to the Survey or when those authors were employed by the State of Arizona and created intellectual products as a function of their official duties. The Survey does maintain property rights to the physical and digital representations of the works.

QUALITY STATEMENT

The Arizona Geological Survey is not responsible for the accuracy of the records, information, or opinions that may be contained in the files. The Survey collects, catalogs, and archives data on mineral properties regardless of its views of the veracity or accuracy of those data.

PRINTED: 11/19/2001

ARIZONA DEPARTMENT OF MINES AND MINERAL RESOURCES AZMILS DATA

PRIMARY NAME: LA NUEVA BONITA VISTA

ALTERNATE NAMES:

PIMA COUNTY MILS NUMBER: 722

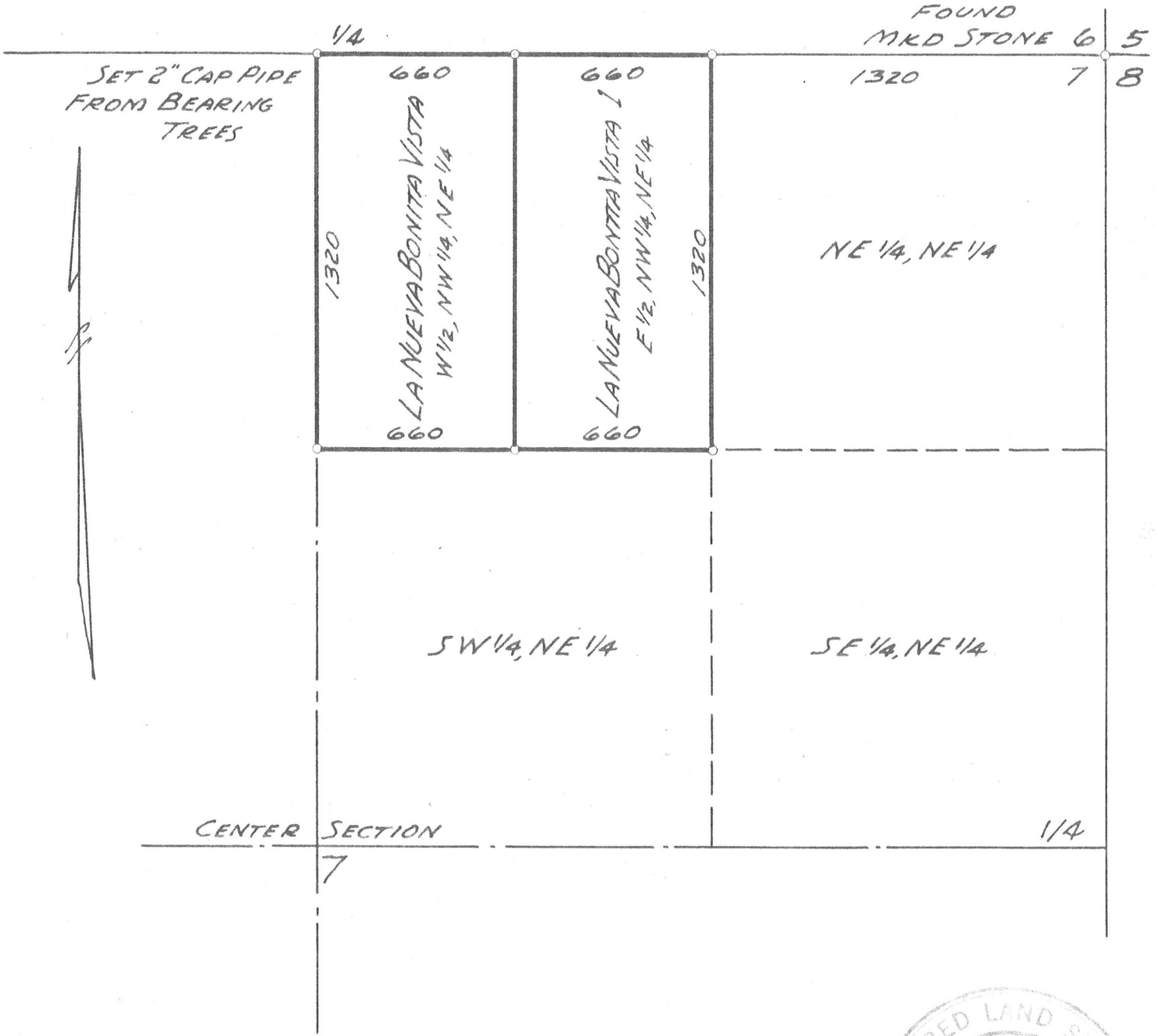
LOCATION: TOWNSHIP 20 S RANGE 8 E SECTION 7 QUARTER NE
LATITUDE: N 31DEG 42MIN 31SEC LONGITUDE: W 111DEG 33MIN 49SEC
TOPO MAP NAME: PRESUMIDO PEAK - 15 MIN

CURRENT STATUS: UNKNOWN

COMMODITY:
COPPER

BIBLIOGRAPHY:
ADMMR FILE DATA 1956

T.20S, R.8E.



LA NUEVA BONITA VISTA &
 LA NUEVA BONITA VISTA No. 1
 BABOQUIVARI MINING DIST.
 S. SECRIST, P. DON & A. ZAMBONINI
 CLAIMANTS
 SCALE 1"=500' JULY 1956



E. H. Jenkins

DEPARTMENT OF MINERAL RESOURCES

STATE OF ARIZONA

FIELD ENGINEERS REPORT

Mine ^{Neuva} La NEUVA BONITA VISTA

Date July 10, 1956

District Las Guijas District, Pima County

Engineer Axel L. Johnson

Subject:

Location - NW 1/4 of NE 1/4 and/or NE 1/4 of NW 1/4 -- Sec. 7 - T 20 S - R 8 E.
(1 1/2 to 1 3/4 mi. east of Mildred Peak Drive about 31 miles south
of Three Pts. Turn west at road maintenance camp, and drive 5 1/4
miles on dirt road.

No. Claims- 2 unpat. claims on State land. Application made for State lease.

Owners- (1) Stanley Secrist, Tucson.
(2) Anton Zambonini, Tucson.
(3) Philip Don, Tucson.

Principal Minerals - Copper

Status - Not in operation. For sale or lease.

Geology - Ore appears to occur as replacement in shale. An outcrop of granite
appears within 200 feet of same. Ore occurs in the location shaft,
and also in an open cut some 100 to 150 feet from same. May be the
same ore lens.

Ore Values- (1) Samples taken by Secrist showed 3.26% and 2.03% copper, resp.
(2) Sample assayed by Miller showed 2.04% copper.
(3) Sample taken by Dale C. Brittain assayed 1.64% copper, 6.3 oz.
silver, with 9.8% Al and 78.2% silica.