



CONTACT INFORMATION

Mining Records Curator
Arizona Geological Survey
1520 West Adams St.
Phoenix, AZ 85007
602-771-1601
<http://www.azgs.az.gov>
inquiries@azgs.az.gov

The following file is part of the

Arizona Department of Mines and Mineral Resources Mining Collection

ACCESS STATEMENT

These digitized collections are accessible for purposes of education and research. We have indicated what we know about copyright and rights of privacy, publicity, or trademark. Due to the nature of archival collections, we are not always able to identify this information. We are eager to hear from any rights owners, so that we may obtain accurate information. Upon request, we will remove material from public view while we address a rights issue.

CONSTRAINTS STATEMENT

The Arizona Geological Survey does not claim to control all rights for all materials in its collection. These rights include, but are not limited to: copyright, privacy rights, and cultural protection rights. The User hereby assumes all responsibility for obtaining any rights to use the material in excess of "fair use."

The Survey makes no intellectual property claims to the products created by individual authors in the manuscript collections, except when the author deeded those rights to the Survey or when those authors were employed by the State of Arizona and created intellectual products as a function of their official duties. The Survey does maintain property rights to the physical and digital representations of the works.

QUALITY STATEMENT

The Arizona Geological Survey is not responsible for the accuracy of the records, information, or opinions that may be contained in the files. The Survey collects, catalogs, and archives data on mineral properties regardless of its views of the veracity or accuracy of those data.

PRINTED: 11/23/2001

ARIZONA DEPARTMENT OF MINES AND MINERAL RESOURCES AZMILS DATA

PRIMARY NAME: LC GROUP

ALTERNATE NAMES:

PIMA COUNTY MILS NUMBER: 858

LOCATION: TOWNSHIP 20 S RANGE 10 E SECTION 25 QUARTER SW
LATITUDE: N 31DEG 39MIN 28SEC LONGITUDE: W 111DEG 16MIN 32SEC
TOPO MAP NAME: CERRO COLORADO - 7.5 MIN

CURRENT STATUS: UNKNOWN

COMMODITY:
SILVER

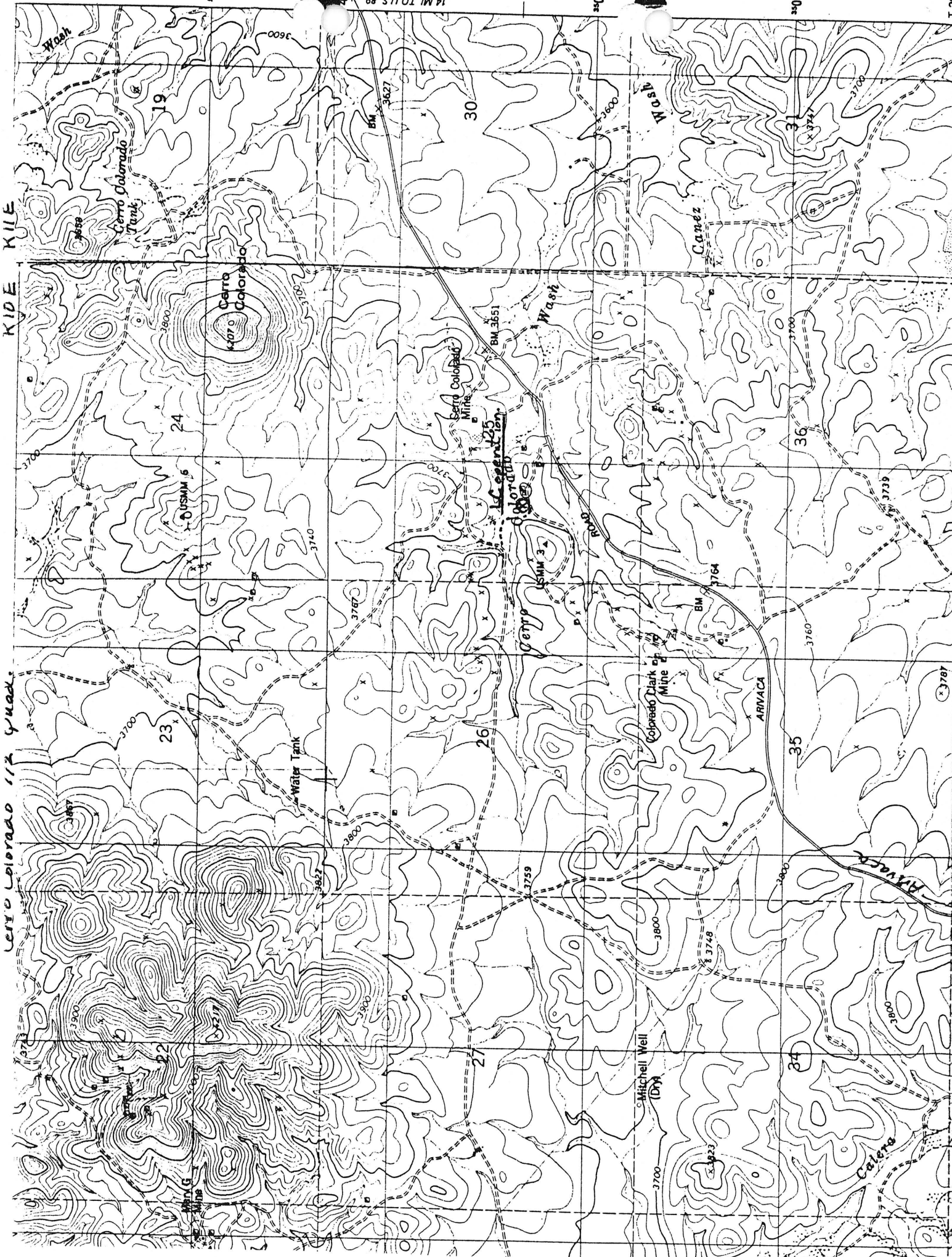
BIBLIOGRAPHY:
ADMMR LC GROUP FILE

Cerro Colorado 112 Quad

KILE KILE

14 MI. TO U.S. 89

T 20



LC GROUP

PIMA COUNTY
T20S R10E Sec 25 SW

KAP WR 1/15/82: An idle heap leaching operation near the old Cerro Colorado Mine was observed. The operation is reported to be a cyanide-heap leach facility which was run by Glenn Burkhardt. Although near the Cerro Colorado Mine, the leach operation reported to a separate entity. Photographs of the heap and permanent equipment were taken from a nearby hillside. No personnel or rolling equipment were at the site. The operation was not visited.

MG WR 4/5/85: The LC group of claims (Sec. 25, T20S R10E) Pima County, is held by Mr. Glenn Burkhardt (c). Mr. Burkhardt's company, La Colorado Minerals, Inc. reportedly operated a cyanide heap leach facility on this property for a brief time during the winter of 1981-82. During the winter of 1982-83, the facility was run regularly and with success. Dump material was trucked to the facility, crushed, and laid on the leach pad which has an asphalt base. Silver precipitates were recovered via Merrill-Crowe equipment. Apparently, recovery was better than 70%.

MG WR 8/2/85: The Battle Ax Mining Co (c) leases the LC site (Pima Co.) to crush and heap leach ore from the Waterman Project (Mary G, Pima Co). Visited this property to view operations.

MG WR 8/9/85: Visited the LC site (Pima Co) with Cliff Hicks. The Battle Ax Mining Co (c) was crushing ore trucked from the Waterman area (Mary G, Pima Co). Provided Mr. Ken McLaughlin (c) with land-status information concerning the original Mary G mine (Pima Co). He informed us that he now plans to leach all the ore at the LC property; he has dropped plans to table some of the material. He is waiting on a reply from Phelps Dodge concerning its possible interest in the Waterman area.

MG WR 10/18/85: Learned that the Battle Ax Mining Co. has transferred its equipment from the LC property (Pima County) to the Waterman shaft area (Mary G file, Pima County). The ore crushing and treating facility is being installed on the topographic saddle immediately east of the shaft.

RL

Cerro
Gold Mine
(F)

T70, R1, S. 25 S

1C

LC Group
Pima Co.

Altar reservoir sought

Daily Reporter, Jul 27, 1982



Questions:

What kind of leeches is he using?

When was Sopori wash moved to the Altar Valley?

What does damming surface water have to do with the new Groundwater Law?