



CONTACT INFORMATION

Mining Records Curator
Arizona Geological Survey
1520 West Adams St.
Phoenix, AZ 85007
602-771-1601
<http://www.azgs.az.gov>
inquiries@azgs.az.gov

The following file is part of the

Arizona Department of Mines and Mineral Resources Mining Collection

ACCESS STATEMENT

These digitized collections are accessible for purposes of education and research. We have indicated what we know about copyright and rights of privacy, publicity, or trademark. Due to the nature of archival collections, we are not always able to identify this information. We are eager to hear from any rights owners, so that we may obtain accurate information. Upon request, we will remove material from public view while we address a rights issue.

CONSTRAINTS STATEMENT

The Arizona Geological Survey does not claim to control all rights for all materials in its collection. These rights include, but are not limited to: copyright, privacy rights, and cultural protection rights. The User hereby assumes all responsibility for obtaining any rights to use the material in excess of "fair use."

The Survey makes no intellectual property claims to the products created by individual authors in the manuscript collections, except when the author deeded those rights to the Survey or when those authors were employed by the State of Arizona and created intellectual products as a function of their official duties. The Survey does maintain property rights to the physical and digital representations of the works.

QUALITY STATEMENT

The Arizona Geological Survey is not responsible for the accuracy of the records, information, or opinions that may be contained in the files. The Survey collects, catalogs, and archives data on mineral properties regardless of its views of the veracity or accuracy of those data.

PRINTED: 11/08/2001

ARIZONA DEPARTMENT OF MINES AND MINERAL RESOURCES AZMILS DATA

PRIMARY NAME: KIRKPATRICK MINING CLAIMS

ALTERNATE NAMES:

PINAL COUNTY MILS NUMBER: 14

LOCATION: TOWNSHIP 1 N RANGE 11 E SECTION 9 QUARTER NE
LATITUDE: N 33DEG 27MIN 00SEC LONGITUDE: W 111DEG 13MIN 00SEC
TOPO MAP NAME: IRON MOUNTAIN - 7.5 MIN

CURRENT STATUS: EXP PROSPECT

COMMODITY:

GOLD

SILVER

LEAD

COPPER OXIDE

BIBLIOGRAPHY:

ADMMR KIRKPATRICK MINING CLAIMS FILE

MARICOPA CO
PINAL CO

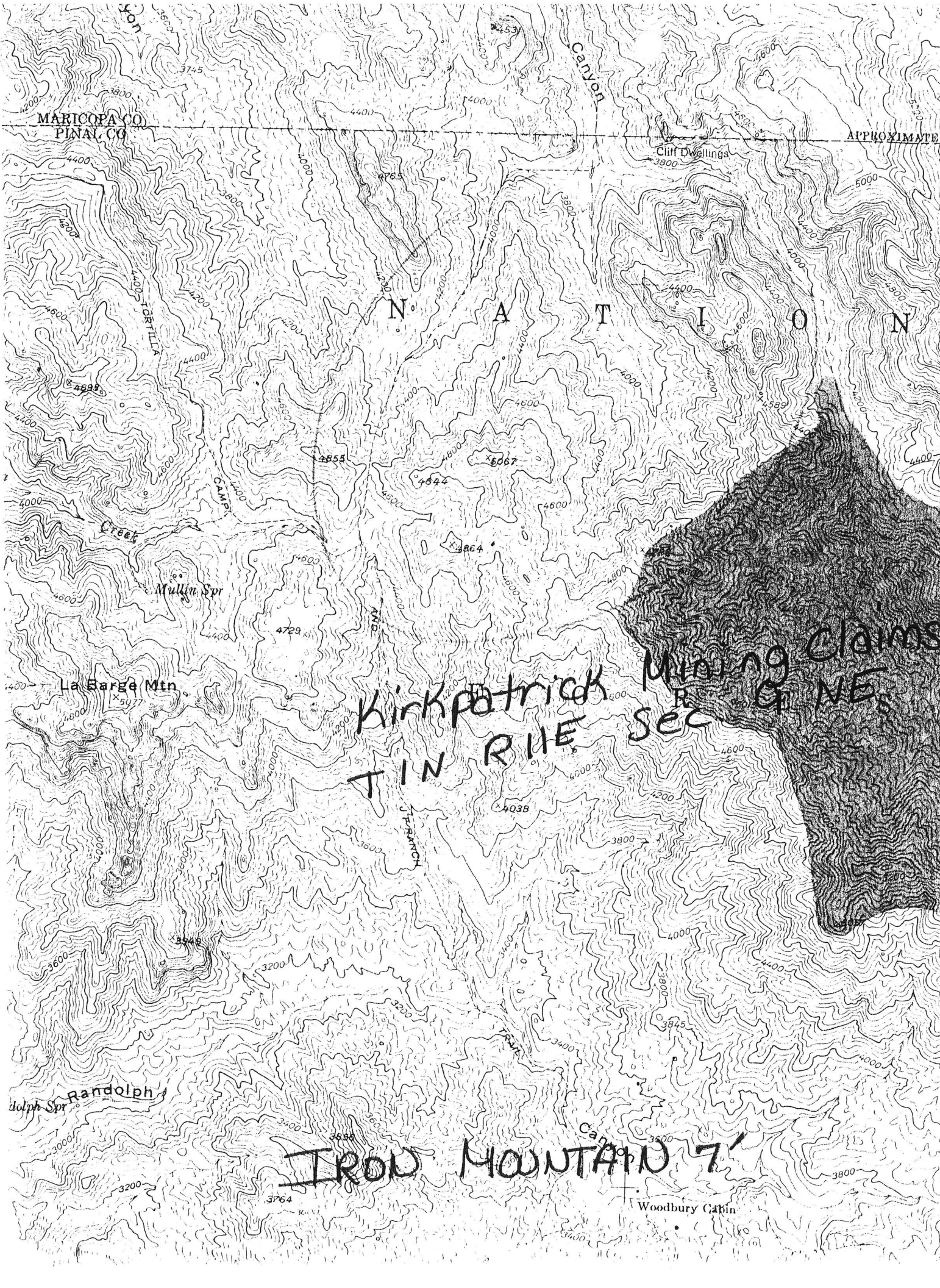
APPROXIMATE

N A T I O N

Kirkpatrick
TIN RIE

Mining Claims
SEC 9 NE

IRON MOUNTAIN 7'



KIRKPATRICK MINING CLAIMS

PINAL COUNTY
SUPERSTITION MTNS.
T1N R11E Sec. 9 NE

Pinal County MILS Index #14

Iron Mountain 7' Quad (included in file)

Report on the
E. D. Kirkpatrick Mining Claims

The Kirkpatrick mining claims were visited September 28-29, 1956 in company with Mr. Kirkpatrick, Bill Dean, and Pete Villaverde.

Location:

The claims are located in Pinal County, Arizona, approximately $1\frac{1}{2}$ miles south of the Maricopa-Pinal County boundary line at $110^{\circ}-13'$ West Longitude and $33^{\circ}-27'$ North Latitude, Township 1 North, Range 11 East--Gila and Salt River base and meridian.

The claims are further located approximately North 56° West, $2\frac{1}{2}$ miles walking distance from Rogers Trough at the head of Rogers Canyon in the Superstition Mountains. Rogers Trough is reached by traveling 2.1 miles East on U. S. Highway 60-70 from Florence Junction to a road paralleling the Magma-Arizona Railroad line; Then 5.1 miles to Hewitt Canyon wash. The wash is followed for 7.2 miles to the head of Hewitt Canyon. From this point travel is over a rough mountain trail for 6.7 miles to Rogers Trough. (See map accompanying this report) It is necessary to have a four-wheel-drive vehicle to make this trip.

Geology:

The whole area lies within a granite formation which starts at an elevation of about 2050 feet. The elevation of the claims is approximately 5500 feet. The surface rock consists mostly of decomposed granite. The vein is a fissure which strikes about due East and West and dips 78° North. The vein material consists of gouge and quartz. The hanging

wall is decomposed granite and the footwall is a granodiorite.

The vein can be traced from one side of the ridge to the other, a distance of about 500 feet. On the East side of the ridge, down in the canyon, a similar formation shows, but the formation is severely shattered and no mineralization is evidenced.

Two surface prospect holes, which were partially covered over, shows the vein to be about 2 inches to 8 inches in width. The vein seems to widen in depth and the mineralization occurs in the quartz. Vugs of hematite in the quartz indicate leaching of the pyrite. Minerals present in the vein are silver as embolite, lead as cerrusite, copper as malachite, and barite.

Samples taken of the surface outcropping showed a trace of gold, 0.5 oz. of silver, and 0.2% lead. Samples taken by Mr. Kirkpatrick of the best quartz rock which lay scattered around the two prospect holes showed the following assays:

#1-.02 oz. gold, 63 oz. silver, 39.1% , lead, and 1% Copper.

#2-Trace of gold, 48.3 oz. silver, and 38.9 % lead.

Remarks:

The prospect holes have been partially buried and need considerable work done to expose the vein in depth and so that true samples can be taken. Samples taken by Mr. Kirkpatrick are very good but are inconclusive so far as a true sample of the vein is concerned.

The heavy vegetation and over-burden of decomposed granite makes it very difficult to follow the outcroppings for any great distances.

Part of the area has been covered by four claims, side by side, running approximately north and south. Two other

claims, adjoining these, are in the process of being staked by Mr. Kirkpatrick to completely cover the area. There is still a question of ownership on the first four claims which has not been cleared up.

Submitted by

A handwritten signature in cursive script that reads "Louis F. Bombardieri". The signature is written in dark ink and is positioned above the typed name.

Louis F. Bombardieri
October 2, 1956