



CONTACT INFORMATION

Mining Records Curator
Arizona Geological Survey
1520 West Adams St.
Phoenix, AZ 85007
602-771-1601
<http://www.azgs.az.gov>
inquiries@azgs.az.gov

The following file is part of the

Arizona Department of Mines and Mineral Resources Mining Collection

ACCESS STATEMENT

These digitized collections are accessible for purposes of education and research. We have indicated what we know about copyright and rights of privacy, publicity, or trademark. Due to the nature of archival collections, we are not always able to identify this information. We are eager to hear from any rights owners, so that we may obtain accurate information. Upon request, we will remove material from public view while we address a rights issue.

CONSTRAINTS STATEMENT

The Arizona Geological Survey does not claim to control all rights for all materials in its collection. These rights include, but are not limited to: copyright, privacy rights, and cultural protection rights. The User hereby assumes all responsibility for obtaining any rights to use the material in excess of "fair use."

The Survey makes no intellectual property claims to the products created by individual authors in the manuscript collections, except when the author deeded those rights to the Survey or when those authors were employed by the State of Arizona and created intellectual products as a function of their official duties. The Survey does maintain property rights to the physical and digital representations of the works.

QUALITY STATEMENT

The Arizona Geological Survey is not responsible for the accuracy of the records, information, or opinions that may be contained in the files. The Survey collects, catalogs, and archives data on mineral properties regardless of its views of the veracity or accuracy of those data.

PRINTED: 11/08/2001

ARIZONA DEPARTMENT OF MINES AND MINERAL RESOURCES AZMILS DATA

PRIMARY NAME: KING OF ARIZONA LEAD FLUORITE

ALTERNATE NAMES:

YUMA COUNTY MILS NUMBER: 380

LOCATION: TOWNSHIP 2 S RANGE 17 W SECTION 1 QUARTER S2
LATITUDE: N 33DEG 16MIN 08SEC LONGITUDE: W 113DEG 57MIN 56SEC
TOPO MAP NAME: KOFA BUTTE - 15 MIN

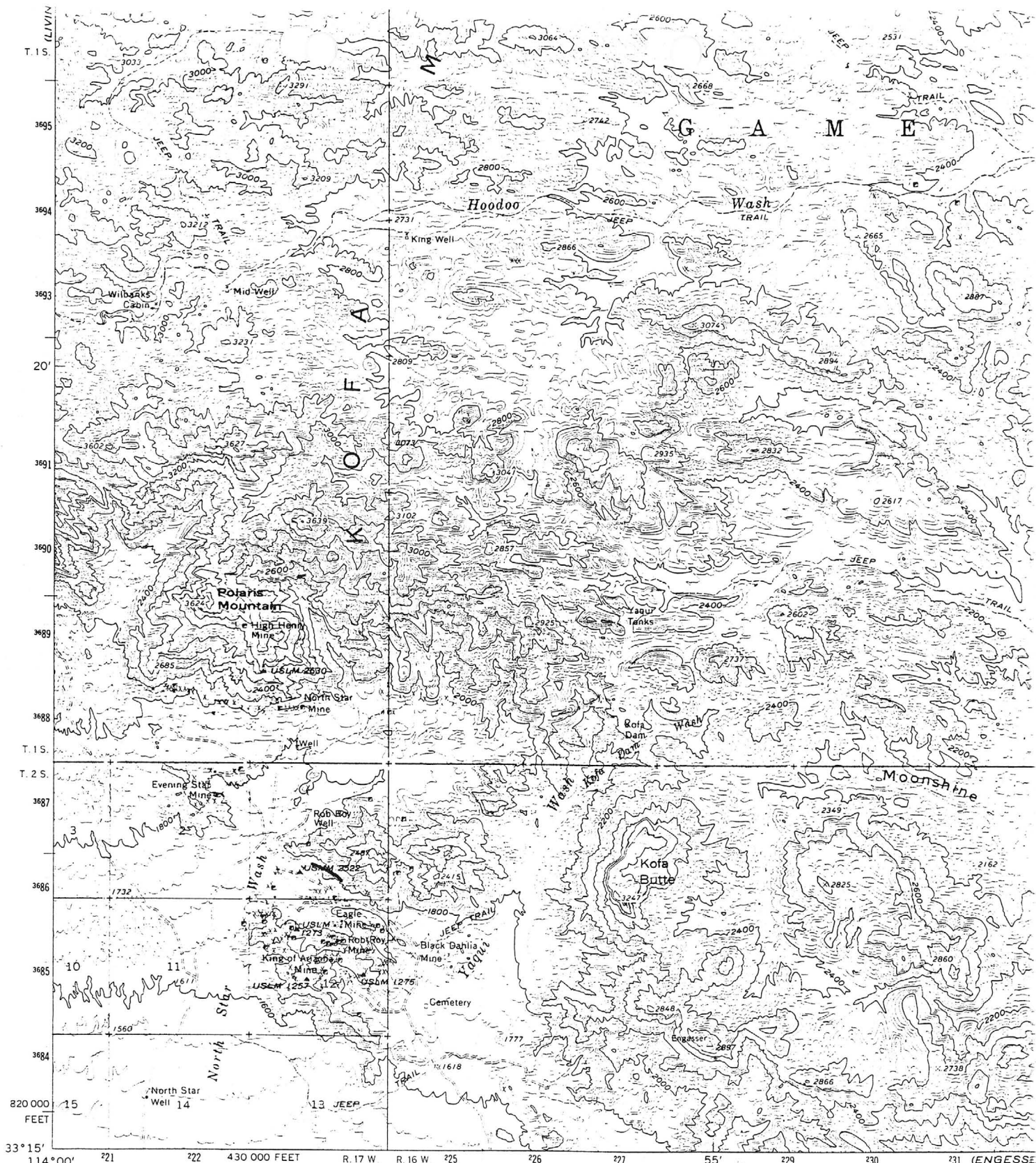
CURRENT STATUS: PAST PRODUCER

COMMODITY:

FLUORINE FLUORSPAR
LEAD

BIBLIOGRAPHY:

ADMMR KING OF ARIZONA LEAD FLUORITE FILE
EKEVATORSKI, E.A., 1971, ARIZONA FLOURSPAR
ADMMR MINERAL REPORT (NO #) P. 45.
THIS IS A SEPARATE OCCURRENCE AND INDEPENDENT
PRODUCER FROM THE KING, BUT ON SAME PROPERTY

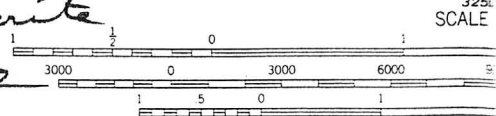


3150 ft
CASTLE DOME
MTS.

Mapped, edited, and published by the Geological Survey
Control by USGS and USC&GS
Topography by photogrammetric methods from aerial
photographs taken 1956 and planetable surveys 1962
Polyconic projection. 1927 North American datum
10,000-foot grid based on Arizona coordinate system,
west zone
1000-meter Universal Transverse Mercator grid ticks,
zone 12, shown in blue
Where omitted, land lines have not been established

*King of a hard 7 licrite
T25 R16W Sec 1 S2*

1°35' 14 1/2"
28 MILS 258 MILS



CONTOUR INT:
DOTTED LINES REPRESENT
DATUM IS ME

UTM GRID AND 1962 MAGNETIC NORTH
DECLINATION AT CENTER OF SHEET

THIS MAP COMPLIES WITH NATIC
FOR SALE BY U. S. GEOLOGICAL SURVEY, DENVER
A FOLDER DESCRIBING TOPOGRAPHIC MAP

KING OF ARIZONA LEAD FLUORITE

YUMA COUNTY

KAP WR 5/16/79: Approximately 100 pounds of hand sorted galena-fluorspar ore was delivered to Jack Hamilton at the Tonto Mining and Milling Company. The rock was obtained from a dump on the northwest portion of the King of Arizona patented ground, Kofa District, Yuma Co. Mr. Hamilton will crush the rock, assay for lead and fluorspar and run mill recovery tests. If the tests prove satisfactory, up to 2,000 tons of similar material may be able to be hand sorted from the old development dump.
