



## **CONTACT INFORMATION**

Mining Records Curator  
Arizona Geological Survey  
1520 West Adams St.  
Phoenix, AZ 85007  
602-771-1601  
<http://www.azgs.az.gov>  
[inquiries@azgs.az.gov](mailto:inquiries@azgs.az.gov)

The following file is part of the

Arizona Department of Mines and Mineral Resources Mining Collection

## **ACCESS STATEMENT**

These digitized collections are accessible for purposes of education and research. We have indicated what we know about copyright and rights of privacy, publicity, or trademark. Due to the nature of archival collections, we are not always able to identify this information. We are eager to hear from any rights owners, so that we may obtain accurate information. Upon request, we will remove material from public view while we address a rights issue.

## **CONSTRAINTS STATEMENT**

The Arizona Geological Survey does not claim to control all rights for all materials in its collection. These rights include, but are not limited to: copyright, privacy rights, and cultural protection rights. The User hereby assumes all responsibility for obtaining any rights to use the material in excess of "fair use."

The Survey makes no intellectual property claims to the products created by individual authors in the manuscript collections, except when the author deeded those rights to the Survey or when those authors were employed by the State of Arizona and created intellectual products as a function of their official duties. The Survey does maintain property rights to the physical and digital representations of the works.

## **QUALITY STATEMENT**

The Arizona Geological Survey is not responsible for the accuracy of the records, information, or opinions that may be contained in the files. The Survey collects, catalogs, and archives data on mineral properties regardless of its views of the veracity or accuracy of those data.

PRINTED: 02-01-2006

ARIZONA DEPARTMENT OF MINES AND MINERAL RESOURCES AZMILS DATA

PRIMARY NAME: KINGMAN ONYX QUARRY

ALTERNATE NAMES:

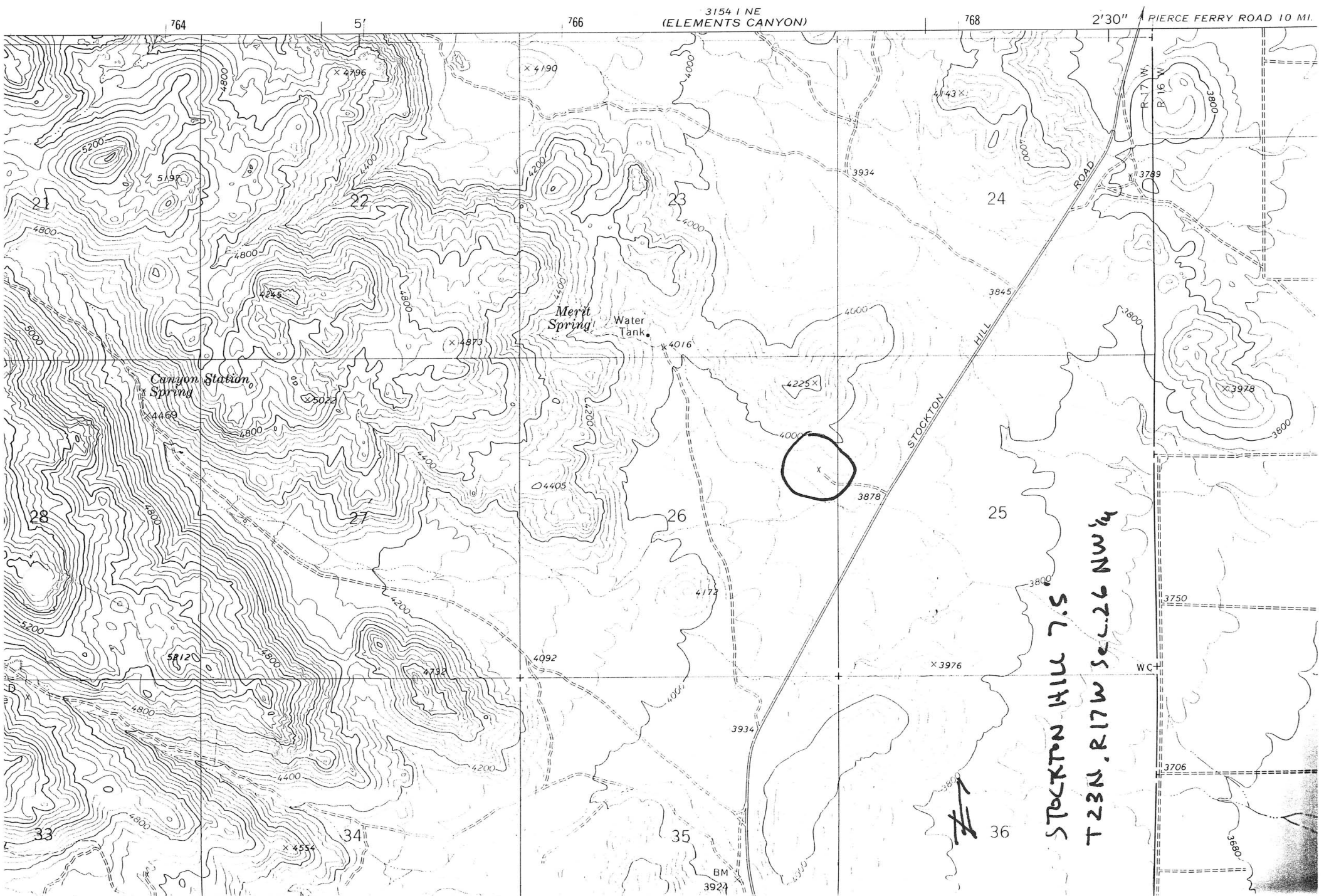
MOHAVE COUNTY MILS NUMBER: 862

LOCATION: TOWNSHIP 23 N RANGE 17 W SECTION 26 QUARTER NW  
LATITUDE: N 35DEG 21MIN 17SEC LONGITUDE: W 114DEG 03MIN 30SEC  
TOPO MAP NAME: STOCKTON HILL 7.5 MIN

CURRENT STATUS:

COMMODITY:  
STONE ONYX

BIBLIOGRAPHY:  
ADMMR KINGMAN ONYX QUARRY FILE  
GPS GUIDE TO WESTERN GEM TRAILS, KELTY, D.A.,  
2002



3154 1 NE  
(ELEMENTS CANYON)

2'30" PIERCE FERRY ROAD 10 MI.

Canyon Station Spring

Merit Spring  
Water Tank

STOCKTON HILL ROAD

STOCKTON HILL 7.5  
T23N, R17W Sec. 26 NW 1/4



BM  
3924