



CONTACT INFORMATION

Mining Records Curator
Arizona Geological Survey
1520 West Adams St.
Phoenix, AZ 85007
602-771-1601
<http://www.azgs.az.gov>
inquiries@azgs.az.gov

The following file is part of the

Arizona Department of Mines and Mineral Resources Mining Collection

ACCESS STATEMENT

These digitized collections are accessible for purposes of education and research. We have indicated what we know about copyright and rights of privacy, publicity, or trademark. Due to the nature of archival collections, we are not always able to identify this information. We are eager to hear from any rights owners, so that we may obtain accurate information. Upon request, we will remove material from public view while we address a rights issue.

CONSTRAINTS STATEMENT

The Arizona Geological Survey does not claim to control all rights for all materials in its collection. These rights include, but are not limited to: copyright, privacy rights, and cultural protection rights. The User hereby assumes all responsibility for obtaining any rights to use the material in excess of "fair use."

The Survey makes no intellectual property claims to the products created by individual authors in the manuscript collections, except when the author deeded those rights to the Survey or when those authors were employed by the State of Arizona and created intellectual products as a function of their official duties. The Survey does maintain property rights to the physical and digital representations of the works.

QUALITY STATEMENT

The Arizona Geological Survey is not responsible for the accuracy of the records, information, or opinions that may be contained in the files. The Survey collects, catalogs, and archives data on mineral properties regardless of its views of the veracity or accuracy of those data.

PRINTED: 11/08/2001

ARIZONA DEPARTMENT OF MINES AND MINERAL RESOURCES AZMILS DATA

PRIMARY NAME: KAISER SPRING GARNET

ALTERNATE NAMES:

MOHAVE COUNTY MILS NUMBER: 696

LOCATION: TOWNSHIP 14 N RANGE 11 W SECTION 10 QUARTER

LATITUDE: N 34DEG 34MIN 07SEC LONGITUDE: W 113DEG 23MIN 52SEC

TOPO MAP NAME: KAISER SPRING - 7.5 MIN

CURRENT STATUS: RAW PROSPECT

COMMODITY:

SPECIMENS GARNET

BIBLIOGRAPHY:

ADMMR KAISER SPRING GARNET FILE

04/12/90

ARIZONA DEPARTMENT OF MINES AND MINERAL RESOURCES FILE DATA

PRIMARY NAME: KAISER SPRINGS GARNET

ALTERNATE NAMES:

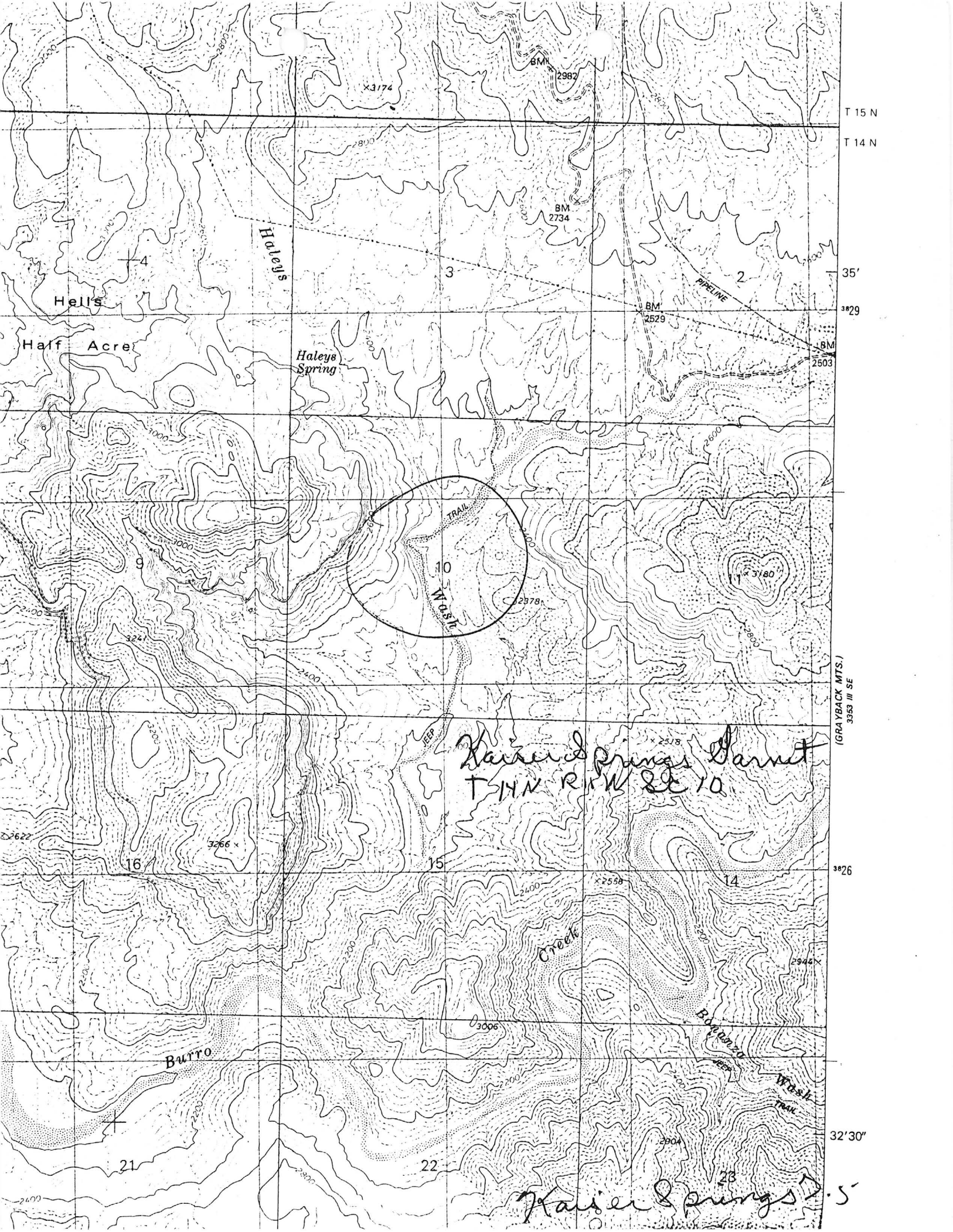
MOHAVE COUNTY MILS NUMBER: 696

LOCATION: TOWNSHIP 14 N RANGE 11 W SECTION 10 QUARTER
LATITUDE: N 34DEG 34MIN 07SEC LONGITUDE: W 113DEG 22MIN 23SEC
TOPO MAP NAME: KAISER SPRING - 7.5 MIN

CURRENT STATUS: RAW PROSPECT

COMMODITY: SPECIMENS GARNET

BIBLIOGRAPHY: ADMMR KAISER SPRINGS GARNET FILE



T 15 N
T 14 N

35'
32'9"

(GRAYBACK MTS.)
3353 III SE

32'6"

32'30"

Kaiser Springs Garnet
T14N R11W Sec 10

Kaiser Springs D. 5

KAISER SPRINGS GARNET

MOHAVE COUNTY

NJN WR 2/27/87: Knox Smith reported the location of two specimen garnet occurrences, Garnet Hill T15N R11W Sec 21 NW, and Kaiser Springs Garnet, T14N R11W Sec 10, Mohave County.
