



## **CONTACT INFORMATION**

Mining Records Curator  
Arizona Geological Survey  
1520 West Adams St.  
Phoenix, AZ 85007  
602-771-1601  
<http://www.azgs.az.gov>  
[inquiries@azgs.az.gov](mailto:inquiries@azgs.az.gov)

The following file is part of the

Arizona Department of Mines and Mineral Resources Mining Collection

## **ACCESS STATEMENT**

These digitized collections are accessible for purposes of education and research. We have indicated what we know about copyright and rights of privacy, publicity, or trademark. Due to the nature of archival collections, we are not always able to identify this information. We are eager to hear from any rights owners, so that we may obtain accurate information. Upon request, we will remove material from public view while we address a rights issue.

## **CONSTRAINTS STATEMENT**

The Arizona Geological Survey does not claim to control all rights for all materials in its collection. These rights include, but are not limited to: copyright, privacy rights, and cultural protection rights. The User hereby assumes all responsibility for obtaining any rights to use the material in excess of "fair use."

The Survey makes no intellectual property claims to the products created by individual authors in the manuscript collections, except when the author deeded those rights to the Survey or when those authors were employed by the State of Arizona and created intellectual products as a function of their official duties. The Survey does maintain property rights to the physical and digital representations of the works.

## **QUALITY STATEMENT**

The Arizona Geological Survey is not responsible for the accuracy of the records, information, or opinions that may be contained in the files. The Survey collects, catalogs, and archives data on mineral properties regardless of its views of the veracity or accuracy of those data.

PRINTED: 11/08/2001

ARIZONA DEPARTMENT OF MINES AND MINERAL RESOURCES AZMILS DATA

PRIMARY NAME: K PLACERS

ALTERNATE NAMES:

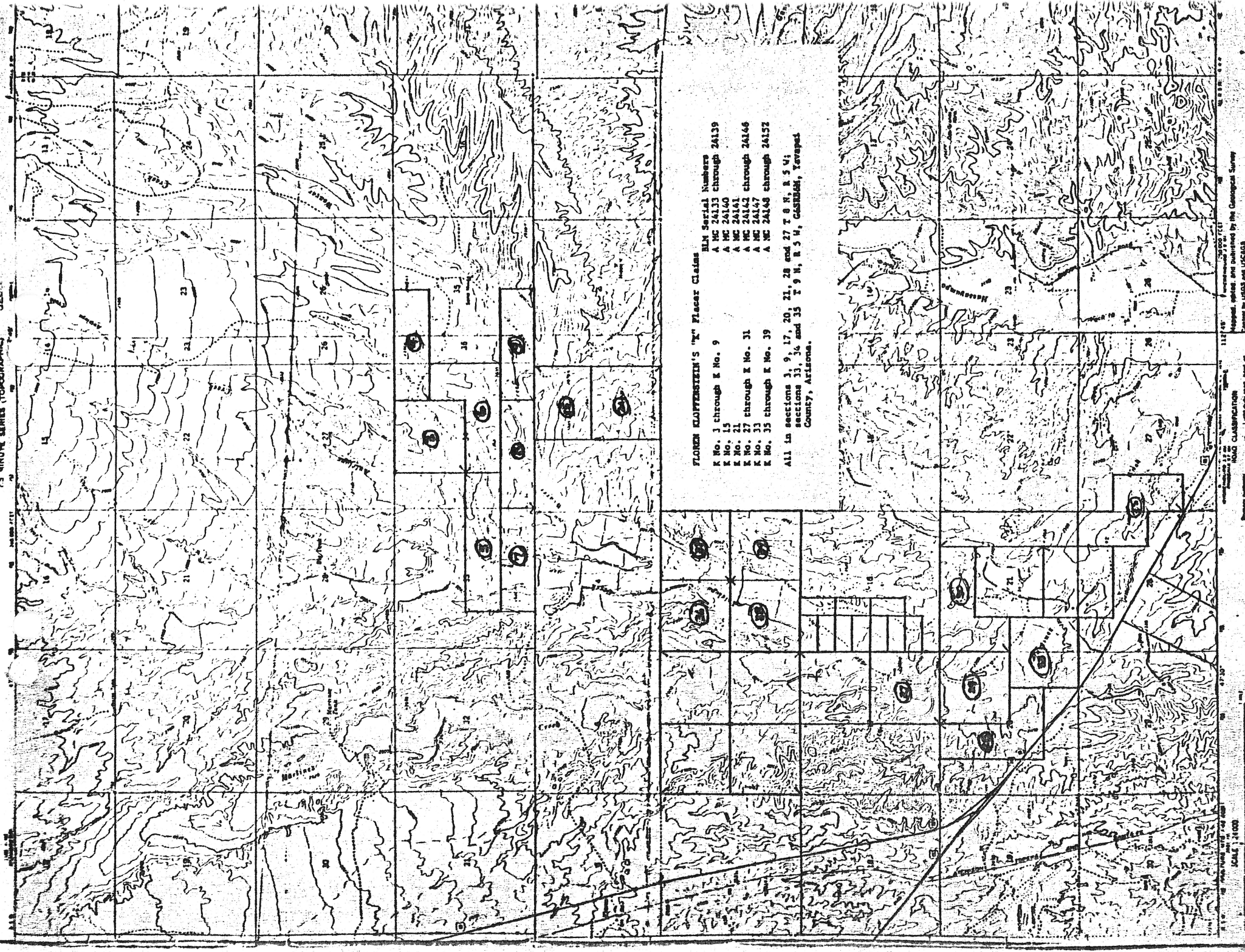
YAVAPAI COUNTY MILS NUMBER: 309

LOCATION: TOWNSHIP 8 N RANGE 5 W SECTION 9 QUARTER C  
LATITUDE: N 34DEG 03MIN 02SEC LONGITUDE: W 112DEG 46MIN 48SEC  
TOPO MAP NAME: FLORES - 7.5 MIN

CURRENT STATUS: RAW PROSPECT

COMMODITY:  
GOLD PLACER

BIBLIOGRAPHY:  
BLM AMC FILE 24135  
CLAIMS ALSO IN SEC. 3, 17, 20, 21, 27 & 28  
T8N-R5W AND SEC. 33-35 T9N-R5W



**FLOREN KLOPFERSTEIN'S "M" PLACER CLAIMS**

- K No. 3 through K No. 9
- ELM Serial Numbers
- A MC 24133 through 24139
- A MC 24140
- A MC 24141
- A MC 24142 through 24146
- A MC 24147
- A MC 24148 through 24152

All in sections 9, 17, 20, 21, 28 and 27 T. 8 N., R. 5 W;  
sections 31, 34 and 35 T. 9 N., R. 5 W., GAMBEL, YAVAPAI  
County, Arizona.

K-PLACER CLAIMS (file)

T8N R5W Secs. 3, 9, 17, 20, 21, 28, 27  
T9N R5W Secs. 33, 34, 35

Yavapai  
Blue Tank/Wickenburg Districts





**BRC**

**BAHAMIAN REFINING CORPORATION**  
CUSTOM REFINERS, COMPLETE ANALYSIS & FLOWSHEET DESIGN

9222 N. 14TH AVE., PHOENIX, ARIZ. 85021  
TELEPHONE (602) 279-9702

*K-claims*  
4 Apr. 78  
RE:K-claims

Floren Klopfenstein  
934 E. Marlette  
Phoenix, AZ 85014

Dear Floren,

The following figures represent the results of fire assay's  
from pipe their sampling of unmarked buckets.

<u>Discription</u>	GOLD oz/t	SILVER oz/t
1 st (Good BS)	2.17	.38
67.21% recovery in a 24 hr soak leach		

Vib sluice-20m	.408	.072
----------------	------	------

2nd(Good BS)1st line?	.68	.12
-----------------------	-----	-----

Sample	1.122	.198
--------	-------	------

White--less than .01 oz/ton total

This ultra fine gold has a very high affinity for the leach media  
and will be far more efficient than any gravity separation system.

Sincerly Yours,

*Fred Finell, Jr.*  
Fred Finell, Jr.

# ARC LABORATORIES

Division of Arizona Research Consultants, Inc.

9236 NORTH 10TH AVE.

P.O. BOX 9973

602 943-3573

PHOENIX, ARIZONA 85068

Floren Klopfenstein  
934 E. Marlette  
Phoenix, Arizona 85014

DATE 29 July 1978

LAB No. 16818-9, 16822, 16843-4

## RESULTS

Lab. No.	Description	Gold, OZ/T	Silver, OZ/T
16818	Solution	nil	trace
16819	BS Heads	0.15	0.19
16822	Black Sand	0.14	0.12

The following samples were submitted on 27 July 1978.

16843	BS cons.	335.	7.13
16844	Tails	0.31	0.08

On high levels of gold and silver as in 16843, we recommend a fire assay if the material is to be purchased or sold.

Respectfully submitted,  
ARC LABORATORIES

*John P. Sickafosse*  
John P. Sickafosse, Ph.D.  
Technical Director

**BRC**

**BAHAMIAN REFINING CORPORATION**  
CUSTOM REFINERS, COMPLETE ANALYSIS & FLOWSHEET DESIGN

9222 N. 14TH AVE., PHOENIX, ARIZ. 85021  
TELEPHONE (602) 279-9702

*K. Clavin*

*(S.I.)* February 9, 1978

Floren Klopfenstein  
934 E. Marlette  
Phoenix, Arizona 85014

*26 Jan 78*

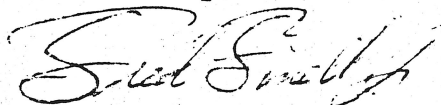
Dear Floren:

The following results were based on actual recovery from your lead base dorys.

1. Large dore 252.5 gr went 1762.43 oz/ton of gold
2. Small dore 143.3 gr went 5705.04 oz/ton of gold

It is my understanding that these dories came from production from the "K" claims owned by yourself.

Sincerely,



Fred Finell, Jr.

FF:ss

# Arizona Testing Laboratories

815 West Madison · Phoenix, Arizona-85007 · Telephone 254-6181

For: Mr. Floren Klopfenstein

Date: September 1, 1977

Lab. No.: 5028

Sample: gold bar

Marked: no mark

Received: 9-1-77

Submitted by: same

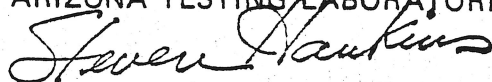
## REPORT OF LABORATORY TESTS

Gold = 99 % + 1 %

Note: The accuracy of this test is approximately plus or minus 1%, as indicated.

Respectfully submitted,

ARIZONA TESTING LABORATORIES



Steven Hankins

# Arizona Testing Laboratories

815 West Madison · Phoenix, Arizona-85007 · Telephone 254-6181

For: Mr. Floren Klopfenstein  
934 East Marlette Street  
Phoenix, Arizona 85014

Date: August 30, 1977

Lab. No.: 5011

Sample: Gold placer & slag

Marked:

Received: August 30, 1977

Submitted by: same

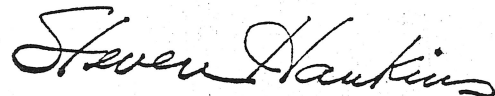
## REPORT OF LABORATORY TESTS

### Gold

Placer	81. %
Slag	0.003 %

Respectfully submitted,

ARIZONA TESTING LABORATORIES



Steven Hankins