



CONTACT INFORMATION

Mining Records Curator
Arizona Geological Survey
1520 West Adams St.
Phoenix, AZ 85007
602-771-1601
<http://www.azgs.az.gov>
inquiries@azgs.az.gov

The following file is part of the

Arizona Department of Mines and Mineral Resources Mining Collection

ACCESS STATEMENT

These digitized collections are accessible for purposes of education and research. We have indicated what we know about copyright and rights of privacy, publicity, or trademark. Due to the nature of archival collections, we are not always able to identify this information. We are eager to hear from any rights owners, so that we may obtain accurate information. Upon request, we will remove material from public view while we address a rights issue.

CONSTRAINTS STATEMENT

The Arizona Geological Survey does not claim to control all rights for all materials in its collection. These rights include, but are not limited to: copyright, privacy rights, and cultural protection rights. The User hereby assumes all responsibility for obtaining any rights to use the material in excess of "fair use."

The Survey makes no intellectual property claims to the products created by individual authors in the manuscript collections, except when the author deeded those rights to the Survey or when those authors were employed by the State of Arizona and created intellectual products as a function of their official duties. The Survey does maintain property rights to the physical and digital representations of the works.

QUALITY STATEMENT

The Arizona Geological Survey is not responsible for the accuracy of the records, information, or opinions that may be contained in the files. The Survey collects, catalogs, and archives data on mineral properties regardless of its views of the veracity or accuracy of those data.

PRINTED: 10/18/2001

ARIZONA DEPARTMENT OF MINES AND MINERAL RESOURCES AZMILS DATA

PRIMARY NAME: JOHN BRECCIA PIPE

ALTERNATE NAMES:

MOHAVE COUNTY MILS NUMBER: 750

LOCATION: TOWNSHIP 37 N RANGE 7 W SECTION 1 QUARTER N2
LATITUDE: N 36DEG 38MIN 28SEC LONGITUDE: W 112DEG 59MIN 55SEC
TOPO MAP NAME: WILD BAND POCKETS - 7.5 MIN

CURRENT STATUS: EXP PROSPECT

COMMODITY:
URANIUM

BIBLIOGRAPHY:
ADMMR JOHN BRECCIA PIPE FILE

04/20/87

ARIZONA DEPARTMENT OF MINES AND MINERAL RESOURCES FILE DATA

PRIMARY NAME: JOHN BRECCIA PIPE

ALTERNATE NAMES:

MOHAVE COUNTY MILS NUMBER: 750

LOCATION: TOWNSHIP 37 N RANGE 7 W SECTION 1 QUARTER
LATITUDE: N 36DEG 45MIN SEC LONGITUDE: W 112DEG 52MIN SEC
TOPO MAP NAME: LITTLE CLAYHOLE VALLEY - 15

CURRENT STATUS: EXP PROSPECT

COMMODITY:
URANIUM

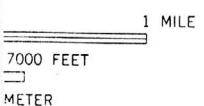
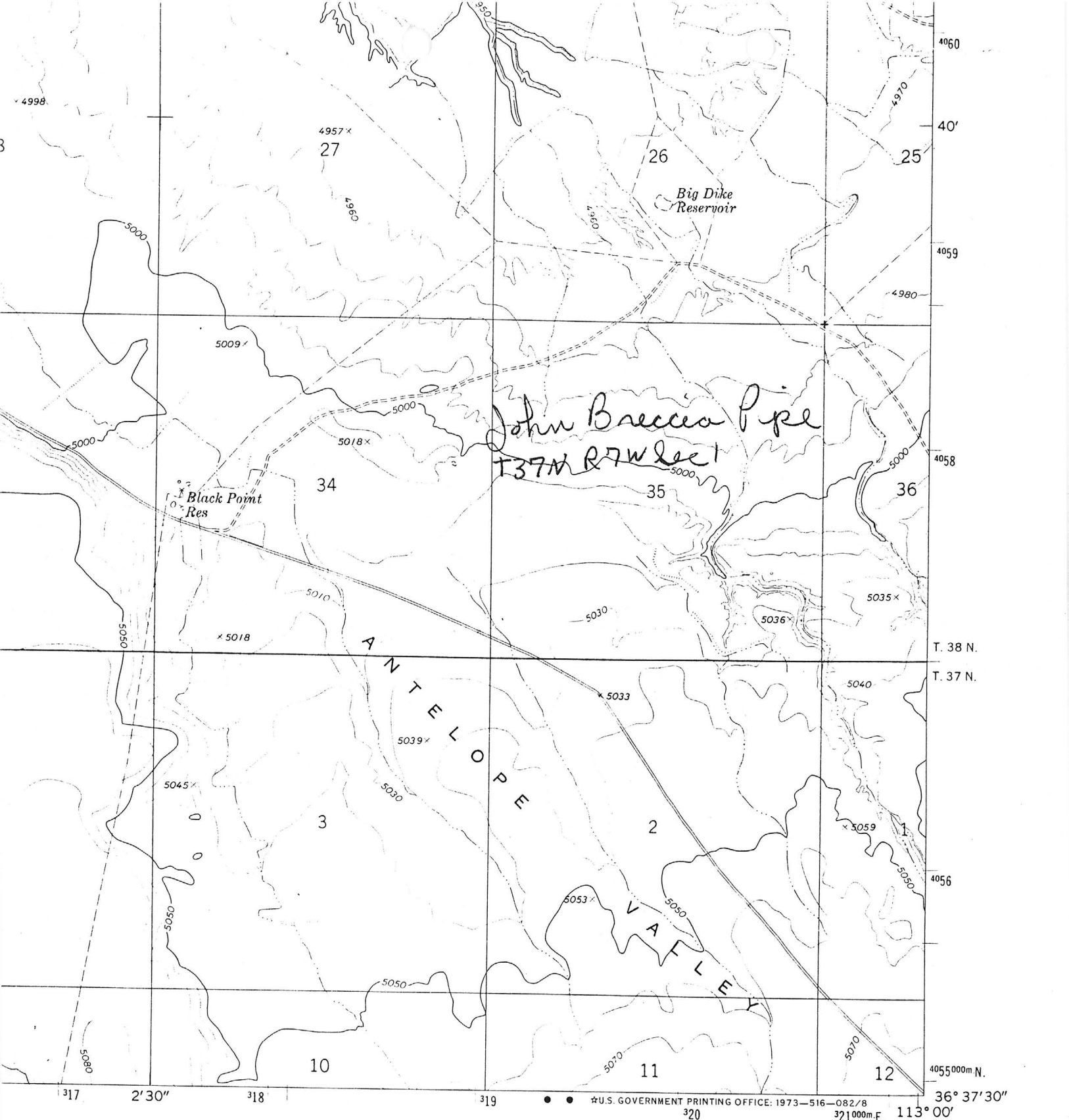
BIBLIOGRAPHY:
ADMMR JOHN BRECCIA PIPE FILE

JOHN BRECCIA PIPE

MOHAVE COUNTY

NJN WR 2/27/87: Dieter Krewdl, District Manager for Pathfinder Mines (c) reports that Pathfinder has discovered five new breccia pipes on the north rim over the last three years. He has subsequently sent me their locations.

EZ 1 Breccia Pipe	T37N R6W Sec 2
EZ 2 Breccia Pipe	T37N R6W Sec 3
What Breccia Pipe	T37N R6W Sec 11
John Breccia Pipe	T37N R7W Sec 1
CLH Breccia Pipe	T38N R7W Sec 34



U.S. GOVERNMENT PRINTING OFFICE: 1973-516-082/8
 320 321 000m. E. 113° 00'

ROAD CLASSIFICATION

- Primary highway, hard surface
- Light-duty road, hard or improved surface
- Secondary highway, hard surface
- Unimproved road
- Interstate Route
- U. S. Route
- State Route

3457 11
 HEATON KNC
 1.62 500

LITTLE CLAYHOLE VALLEY, ARIZ.
 N3637.5-W11300/7.5

10-B
 MO