



CONTACT INFORMATION

Mining Records Curator
Arizona Geological Survey
1520 West Adams St.
Phoenix, AZ 85007
602-771-1601
<http://www.azgs.az.gov>
inquiries@azgs.az.gov

The following file is part of the

Arizona Department of Mines and Mineral Resources Mining Collection

ACCESS STATEMENT

These digitized collections are accessible for purposes of education and research. We have indicated what we know about copyright and rights of privacy, publicity, or trademark. Due to the nature of archival collections, we are not always able to identify this information. We are eager to hear from any rights owners, so that we may obtain accurate information. Upon request, we will remove material from public view while we address a rights issue.

CONSTRAINTS STATEMENT

The Arizona Geological Survey does not claim to control all rights for all materials in its collection. These rights include, but are not limited to: copyright, privacy rights, and cultural protection rights. The User hereby assumes all responsibility for obtaining any rights to use the material in excess of "fair use."

The Survey makes no intellectual property claims to the products created by individual authors in the manuscript collections, except when the author deeded those rights to the Survey or when those authors were employed by the State of Arizona and created intellectual products as a function of their official duties. The Survey does maintain property rights to the physical and digital representations of the works.

QUALITY STATEMENT

The Arizona Geological Survey is not responsible for the accuracy of the records, information, or opinions that may be contained in the files. The Survey collects, catalogs, and archives data on mineral properties regardless of its views of the veracity or accuracy of those data.

PRINTED: 03/05/2003

ARIZONA DEPARTMENT OF MINES AND MINERAL RESOURCES AZMILS DATA

PRIMARY NAME: JOHN

ALTERNATE NAMES:

YAVAPAI COUNTY MILS NUMBER: 1389

LOCATION: TOWNSHIP 13 N RANGE 1 W SECTION 21 QUARTER NE
LATITUDE: N 34DEG 29MIN 44SEC LONGITUDE: W 112DEG 22MIN 02SEC
TOPO MAP NAME: POLAND JUNCTION - 7.5 MIN

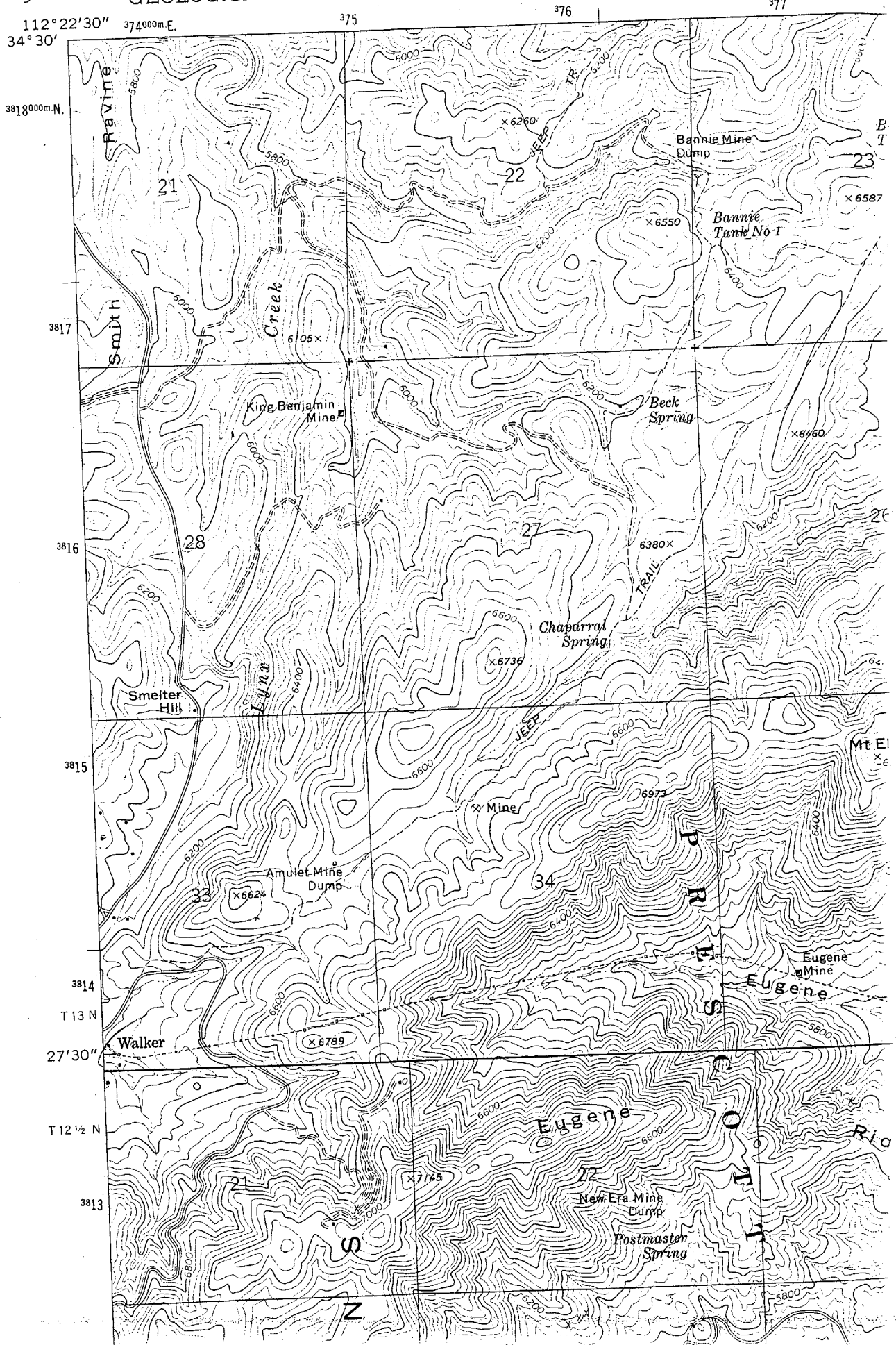
CURRENT STATUS: RAW PROSPECT

COMMODITY:
GOLD LODE

BIBLIOGRAPHY:
ADMMR JOHN FILE

3553 II SW
(PRESCOTT)

UNITED STATES
DEPARTMENT OF THE INTERIOR
GEOLOGICAL SURVEY



Date Printed: 12/29/92

ARIZONA DEPARTMENT OF MINES AND MINERAL RESOURCES

VERBAL INFORMATION SUMMARY

Information from: **Doug French**

Company: Prescott National Forest-Bradshaw Distri

Address: 2230 East Highway 69

City, State ZIP: Prescott, Arizona 86301

Phone: 602-445-7253

MINE: John

ADMMR Mine File: John Mine

County: Yavapai

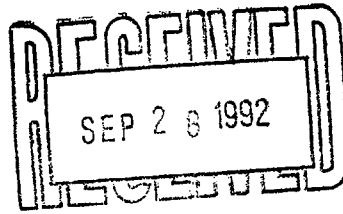
AzMILS Number:

SUMMARY

Mr. French reported that Robert Corley, P.O. Box 1186, Blythe, California 92226 submitted an operating plan to sink a 100' deep, 8' X 8' shaft on his John 316 claim in the SW,NE, Sec. 21, T.13N.,R.1W. to develop a gold prospect.

A copy of the Forest Service notification has been provided for the file.

Ken A. Phillips, Chief Engineer Date: October 5, 1992



Reply To: 2810

Date: September 24, 1992

Dear Concerned Citizen:

The Bradshaw Ranger District has received two Plans of Operation for gold exploration. The first project is south of Lynx Lake in Section 21, T13N., R1W., and calls for excavating an 8' x 8' x 100' deep test shaft. The excavated waste rock will be stockpiled and used to fill in the shaft when the operation is complete. Equipment to be used in this operation includes, an air rock drill, front-end loader, backhoe and gas powered rock crusher.

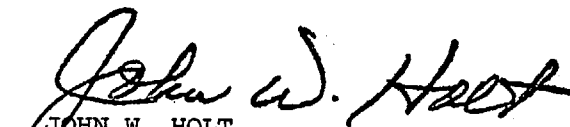
The second project is northeast of Poland Junction, near Nemo Springs in Section 24, T13N., R1W. It calls for improving 1000' of an existing, but currently closed mining road and constructing 200' x 12' of new road to access a previously disturbed drill site, adjacent to Nemo Springs. A rotary drill will then be brought in to take a core drill sample not to exceed 1000' feet deep. The drill site and road will be reclaimed by scarifying and seeding upon project completion.

As a contingency of approval for both projects, the operators will be required to post a bond sufficient to reclaim both projects, if necessary.

Negligible impacts on vegetation, wildlife and water quality were identified through project scoping and will be mitigated through approval stipulations. A cultural resource inventory and a biological evaluation, as required, will be completed prior to any disturbance.

If you have any additional concerns or comments, please provide them to me by October 7, 1992. Copies of the proposals are available for review at this office. If you have questions, feel free to contact Beverly Morgan or Doug Franch at (602) 445-7253.

Sincerely,


JOHN W. HOLT
District Ranger