



CONTACT INFORMATION

Mining Records Curator
Arizona Geological Survey
1520 West Adams St.
Phoenix, AZ 85007
602-771-1601
<http://www.azgs.az.gov>
inquiries@azgs.az.gov

The following file is part of the

Arizona Department of Mines and Mineral Resources Mining Collection

ACCESS STATEMENT

These digitized collections are accessible for purposes of education and research. We have indicated what we know about copyright and rights of privacy, publicity, or trademark. Due to the nature of archival collections, we are not always able to identify this information. We are eager to hear from any rights owners, so that we may obtain accurate information. Upon request, we will remove material from public view while we address a rights issue.

CONSTRAINTS STATEMENT

The Arizona Geological Survey does not claim to control all rights for all materials in its collection. These rights include, but are not limited to: copyright, privacy rights, and cultural protection rights. The User hereby assumes all responsibility for obtaining any rights to use the material in excess of "fair use."

The Survey makes no intellectual property claims to the products created by individual authors in the manuscript collections, except when the author deeded those rights to the Survey or when those authors were employed by the State of Arizona and created intellectual products as a function of their official duties. The Survey does maintain property rights to the physical and digital representations of the works.

QUALITY STATEMENT

The Arizona Geological Survey is not responsible for the accuracy of the records, information, or opinions that may be contained in the files. The Survey collects, catalogs, and archives data on mineral properties regardless of its views of the veracity or accuracy of those data.

PRINTED: 10/19/2001

ARIZONA DEPARTMENT OF MINES AND MINERAL RESOURCES AZMILS DATA

PRIMARY NAME: JEROME VICTOR GROUP

ALTERNATE NAMES:

HAYNES SHAFT
WEST UNITED VERDE CO. PROP.
MONARCH COPPER CO. PROP.
UNITED VERDE EX PROP.

YAVAPAI COUNTY MILS NUMBER: 551C

LOCATION: TOWNSHIP 16 N RANGE 2 E SECTION 22 QUARTER NW
LATITUDE: N 34DEG 45MIN 22SEC LONGITUDE: W 112DEG 07MIN 51SEC
TOPO MAP NAME: MUNDS DRAW - 7.5 MIN

CURRENT STATUS: PAST PRODUCER

COMMODITY:

COPPER SULFIDE

BIBLIOGRAPHY:

USGS MUNDS DRAW QUAD
BLM MINING DISTRICT SHEETS 55 & 56
LINDGREN, W. ORE DEPTS JEROME & BRADSHAW MTNS
QUADS USGS BULL 782 1926 P 97
ANDERSON, C.A. & S.C. CREASY GEOL. AND ORE
DEPTS JEROME AREA USGS PP 308 1958 P 130-132
ADMMR UNITED VERDE EXTENSION MINE COLVO FILE
ADMMR JEROME VICTOR GROUP FILE

12/14/90

ARIZONA DEPARTMENT OF MINES AND MINERAL RESOURCES FILE DATA

PRIMARY NAME: JEROME VICTOR GROUP

ALTERNATE NAMES:

HAYNES SHAFT
WEST UNITED VERDE CO. PROP.
MONARCH COPPER CO. PROP.
UNITED VERDE EX PROP.

YAVAPAI COUNTY MILS NUMBER: 551C

LOCATION: TOWNSHIP 16 N RANGE 2 E SECTION 22 QUARTER NW
LATITUDE: N 34DEG 45MIN 22SEC LONGITUDE: W 112DEG 07MIN 51SEC
TOPO MAP NAME: MUNDS DRAW - 7.5 MIN

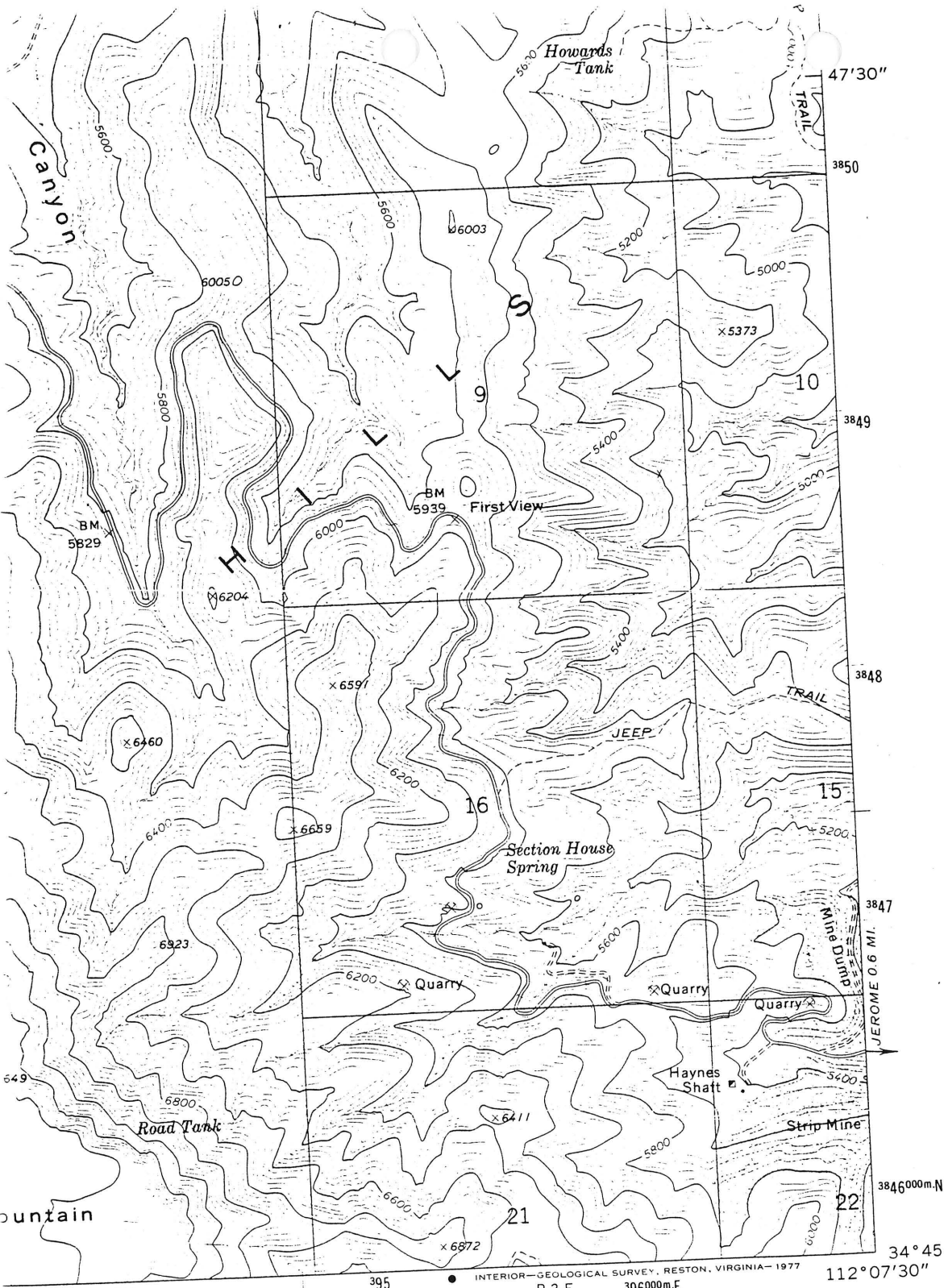
CURRENT STATUS: PAST PRODUCER

COMMODITY:

COPPER

BIBLIOGRAPHY:

USGS MUNDS DRAW QUAD
BLM MINING DISTRICT SHEETS 55 & 56
LINDGREN, W. ORE DEPTS JEROME & BRADSHAW MTNS
QUADS USGS BULL 782 1926 P 97
ANDERSON, C.A. & S.C. CREASY GEOL. AND ORE
DEPTS JEROME AREA USGS PP 308 1958 P 130-132
ADMMR UNITED VERDE EXTENSION MINE COLVO FILE
ADMMR JEROME VICTOR GROUP FILE



ROAD CLASSIFICATION

- | | |
|---|---|
| Primary highway,
hard surface..... | Light-duty road, hard or
improved surface..... |
| Secondary highway,
hard surface..... | Unimproved road..... |
| Interstate Route | U. S. Route |
| State Route | State Route |



QUADRANGLE LOCATION

MUNDS DRAW, ARIZ.

SW/4 CLARKDALE 15' QUADRANGLE
N3445-W11207.5/7.5

