



CONTACT INFORMATION

Mining Records Curator
Arizona Geological Survey
1520 West Adams St.
Phoenix, AZ 85007
602-771-1601
<http://www.azgs.az.gov>
inquiries@azgs.az.gov

The following file is part of the

Arizona Department of Mines and Mineral Resources Mining Collection

ACCESS STATEMENT

These digitized collections are accessible for purposes of education and research. We have indicated what we know about copyright and rights of privacy, publicity, or trademark. Due to the nature of archival collections, we are not always able to identify this information. We are eager to hear from any rights owners, so that we may obtain accurate information. Upon request, we will remove material from public view while we address a rights issue.

CONSTRAINTS STATEMENT

The Arizona Geological Survey does not claim to control all rights for all materials in its collection. These rights include, but are not limited to: copyright, privacy rights, and cultural protection rights. The User hereby assumes all responsibility for obtaining any rights to use the material in excess of "fair use."

The Survey makes no intellectual property claims to the products created by individual authors in the manuscript collections, except when the author deeded those rights to the Survey or when those authors were employed by the State of Arizona and created intellectual products as a function of their official duties. The Survey does maintain property rights to the physical and digital representations of the works.

QUALITY STATEMENT

The Arizona Geological Survey is not responsible for the accuracy of the records, information, or opinions that may be contained in the files. The Survey collects, catalogs, and archives data on mineral properties regardless of its views of the veracity or accuracy of those data.

PRINTED: 10/19/2001

ARIZONA DEPARTMENT OF MINES AND MINERAL RESOURCES AZMILS DATA

PRIMARY NAME: JENKINS PROSPECT

ALTERNATE NAMES:

SANTA CRUZ COUNTY MILS NUMBER: 118B

LOCATION: TOWNSHIP 20 S RANGE 14 E SECTION 16 QUARTER C
LATITUDE: N 31DEG 41MIN 41SEC LONGITUDE: W 110DEG 54MIN 53SEC
TOPO MAP NAME: MOUNT WRIGHTSON - 15 MIN

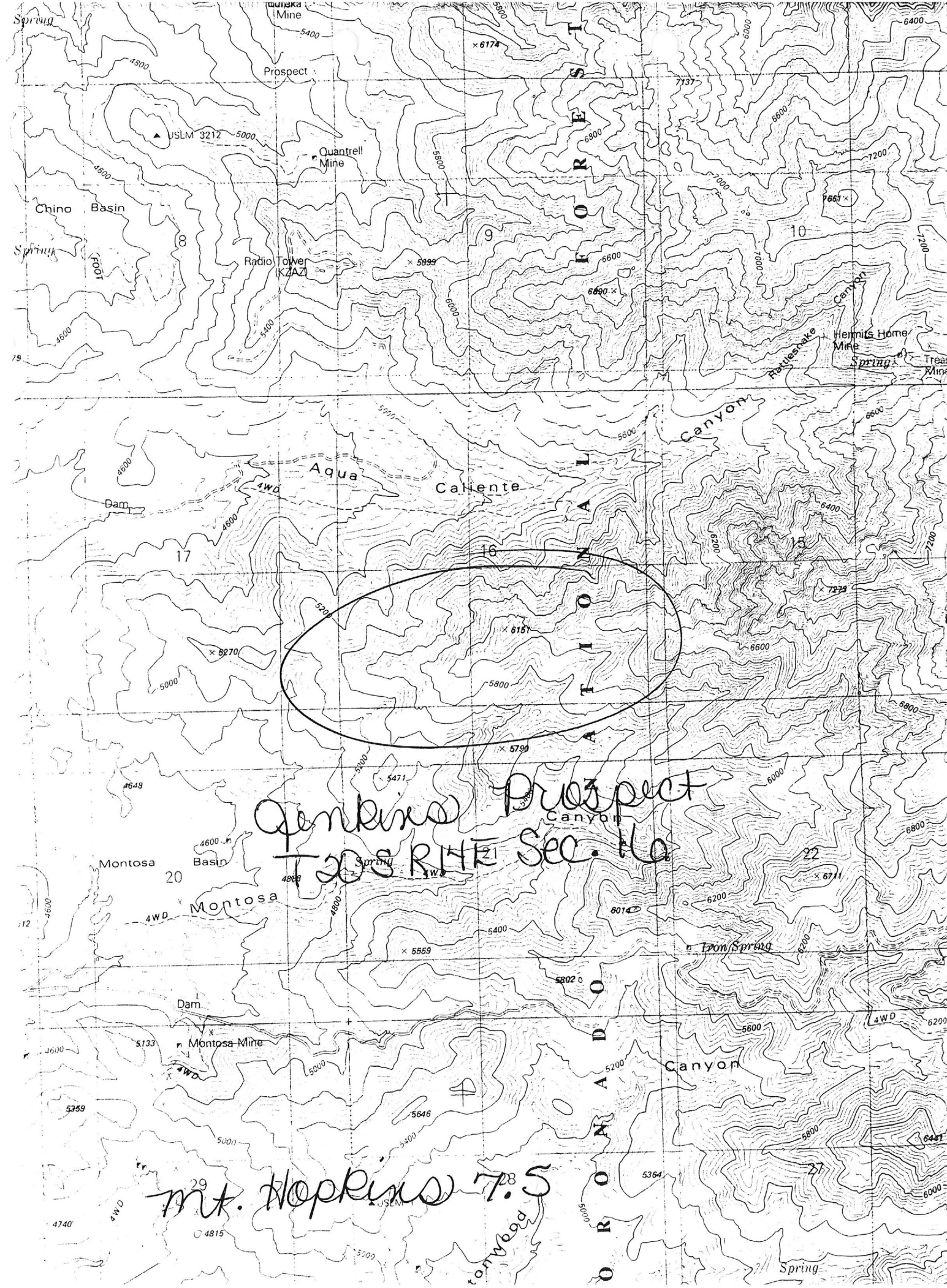
CURRENT STATUS: EXP PROSPECT

COMMODITY:

LEAD SULFIDE
COPPER SULFIDE
ZINC SULFIDE

BIBLIOGRAPHY:

AZBM CARD FILE SANTA CRUZ CO.
SCHRADER, F.C., 1915, USGS BULL. 582, P. 184
USGS PP 748, P. 11-12
ADMMR JENKINS PROSPECT
ADMMR "U" FILE CU 47 NOT MAPPED



Gentling Prospect
T 20 S R 14 E Sec. 14

mt. Hopkins 7.5

* GENERAL REFERENCES

- REFERENCE 1 F1 < USBM FILE DATA - CLUSTER # 148, JENKINS PROSPE >
- REFERENCE 2 F2 < SCHRADER, F.C., 1915, USGS BULL 582, p. 184 >
- REFERENCE 3 F3 < ABGMT FILES, STANTON B. KEITH >
- REFERENCE 4 F4 < DREWES, H., 1971, USGS MAP I-614 (1:48000) >

N5 < DIKES RANGE IN COMPOSITION FROM RHYOLITE TO DIORITE >

F5 < DREWES, H., 1972, USGS PROFESSIONAL PAPER 748, p. 11-12 >

MILES # 1183

U.S. CRIB-SITE FORM

RECORD IDENTIFICATION

RECORD NUMBER #10 < > RECORD TYPE #20 < X.I.M. > DEPOSIT NUMBER #40 < >
 REPORT DATE #1 < 8.2.40.4 > INFORMATION SOURCE #30 < 1.2 > FILE LINK IDENT. #50 < USBM-0040230240 >
 REPORTER(SUPERVISOR) #2 < LARABA, PETER > (last, first, middle initial) < CALDER, SUSAN > (last, first, middle initial)
 REPORTER AFFILIATION #6 < ABGMT > SITE NAME #10 < JENKINS PROSPECT >
 SYNONYMS #11 < >

LOCATION

MINING DISTRICT/AREA #30 < TYNDALL DISTRICT >
 COUNTY #40 < SANTA CRUZ > STATE #50 < A.Z. > COUNTRY #40 < U.S. >
 PHYSIOGRAPHIC PROV #63 < 1.2 >
 DRAINAGE AREA #62 < 1.505030.1.1. LOWER COLORADO > LAND STATUS #64 < 4.1.1.1. (1.9.7.9.) >
 QUADRANGLE NAME #90 < MT. HOPKINS, A2 > (1.9.8.1.) QUADRANGLE SCALE #100 < 2400.0 >
 SECOND QUAD NAME #92 < MT. WRIGHTSON > (1.9.5.8.) SECOND QUAD SCALE #91 < 6250.0 >
 ELEVATION #107 < 5365.4 FT. >

UTM
 NORTHING #120 < 350622.0 >
 EASTING #130 < 50640.0 >
 ZONE NUMBER #110 < 1.2 >

* ACCURACY
 ACCURATE (circle)
 ESTIMATED EST < >

GEODETTIC
 LATITUDE #70 < 31-41-29 N >
 LONGITUDE #80 < 110-54-44 W >

CADASTRAL
 TOWNSHIP(S) #77 < 02.05.1.1 > RANGE(S) #78 < 01.4.E.1.1 >
 SECTION(S) #79 < 16 >
 SECTION FRACTION(S) #76 < C OF 6th OF NE >
 MERIDIAN(S) #81 < GILA AND SALT RIVER >

POSITION FROM NEAREST PROMINENT LOCALITY #82 < 1.4 MILES E-NW OF MT. HOPKINS >
 LOCATION COMMENTS #83 < SOUTH SIDE OF AGUA CALIENTE CANYON; 1 1/2 MILES SE OF QUANTRELL MINE (ELEPHANT HEAD GROUP) >

* ESSENTIAL INFORMATION
 + ESSENTIAL SOMETIMES OR HIGHLY RECOMMENDED

COMMODITY INFORMATION

*COMMODITIES PRESENT C10 RB, VZN, #
 *ORE MINERALS C30 GALENA, PYRITE, CHALCOPYRITE, SPECULARITE, SPHALERITE, HEMATITE
 *COMMODITY SUBTYPES C41 < >
 *GEN. ANALYTICAL DATA C43 < >
 *COM. INFO. COMMENTS C50 < >

* SIGNIFICANCE

	PRODUCER		NON-PRODUCER
MAJOR PRODUCTS	MAJOR < >	MAIN COMMODITIES PRESENT C11	<u>RB, VZN, #</u>
MINOR PRODUCTS	MINOR < >	MINOR COMMODITIES PRESENT C12	<u>CU, #</u>
POTENTIAL PRODUCTS	POTEN < >		
OCCURRENCES	OCCUR < >	OCCURRENCES	OCCUR < >

*PRODUCTION

PRODUCER	NON-PRODUCER
PRODUCTION YES (circle) · PRODUCTION SIZE <u>SML</u> MED LGE (circle one)	PRODUCTION <u>UND</u> NO (circle one)

*STATUS

EXPLORATION OR DEVELOPMENT

PRODUCER	NON-PRODUCER
STATUS AND ACTIVITY A20 < >	STATUS AND ACTIVITY A20 < 2 >

*DISCOVERER L20 A.E. JENKINS
 *YEAR OF DISCOVERY L10 < > *NATURE OF DISCOVERY L30 B₁ *YEAR OF FIRST PRODUCTION L40 < > *YEAR OF LAST PRODUCTION L45 < >
 *PRESENT/LAST OWNER A12 < >
 *PRESENT/LAST OPERATOR A13 < >
 *EXPL./DEV.COMMENTS L110 < >

DESCRIPTION OF DEPOSIT

*DEPOSIT TYPE(S) C40 SHEAR ZONE
 *DEPOSIT FORM/SHAPE M10 IRREGULAR
 *DEPTH TO TOP M20 < > *UNITS M21 < > *MAXIMUM LENGTH M40 < > *UNITS M41 < >
 *DEPTH TO BOTTOM M30 < > *UNITS M31 < > *MAXIMUM WIDTH M50 50 *UNITS M51 FT
 *DEPOSIT SIZE M15 (SMALL) M15 (MEDIUM) M15 (LARGE) (circle one) *MAXIMUM THICKNESS M60 < > *UNITS M61 < >
 *STRIKE M70 EAST - WEST *DIP M80 < >
 *DIRECTION OF PLUNGE M100 < > *PLUNGE M90 < >
 *DEP. DESC. COMMENTS M110 6 TO 50 FT FAULT - SHEAR ZONE.

DESCRIPTION OF WORKINGS

*Workings are: SURFACE M120 UNDERGROUND M130 BOTH M140 (circle one) *OVERALL LENGTH M190 < > *UNITS M191 < >
 *DEPTH BELOW SURFACE M160 < > *UNITS M161 < > *OVERALL WIDTH M200 < > *UNITS M201 < >
 *LENGTH OF WORKINGS M170 < > *UNITS M171 < > *OVERALL AREA M210 < > *UNITS M211 < >
 *DESC. OF WORK. COM. M220 DEVELOPMENT WORK - EXPLORATION PROSPECT; TYPE OF DEVELOPMENT UNKNOWN

GEOLOGY

*AGE OF HOST ROCK(S) K1 LCRET, #, 68-69 m.y. (DREWES H, 1971)
 *HOST ROCK TYPE(S) K1A QUARTZ DIORITE; QUARTZ MONZONITE OF THE QUANTRELL STOCK
 *AGE OF IGNEOUS ROCK(S) K2 LCRET, #
 *IGNEOUS ROCK TYPE(S) K2A FINE-GRAINED OR APLITIC QUARTZ MONZONITE
 *AGE OF MINERALIZATION K3 LCRET, #
 *PERT. MINERALS (NOT ORE) K4 QUARTZ
 *ORE CONTROL/LOCUS K5 E-W SHEAR FAULT LEDGE IN QUARTZ DIORITE
 *MAJ. REG. TRENDS/STRUCT. N5 NE-TRENDING QUARTZ VEINS AND DIKES IN MADERA - AGUA CALIENTE CANYONS;
 *TECTONIC SETTING N15 SALERO FAULT BLOCK
 *SIGNIFICANT LOCAL STRUCT. N70 FAULT PARALLELED BY A GRANITE PORPHYRY DIKE 20 FT. TO NORTH
 *SIGNIFICANT ALTERATION N75 ALTERED, SERICITIZED GRANITE
 *PROCESS OF CONC./ENRICH. N80 MINERALIZATION ALONG FAULT SHEAR ZONE
 *FORMATION AGE N30 < >
 *FORMATION NAME N30A < >
 *SECOND FM AGE N35 < >
 *SECOND FM NAME N35A < >
 *IGNEOUS UNIT AGE N50 LCRET, #
 *IGNEOUS UNIT NAME N50A ELEPHANT HEAD QUARTZ MONZONITE
 *SECOND IG. UNIT AGE N55 < >
 *SECOND IG. UNIT NAME N55A < >
 *GEOLOGY COMMENTS N85 SHEAR ZONE CARRIES GOUGE AND SOFT, CRUDELY BANDED ORE CONTAINING DRUSY QUARTZ

GENERAL COMMENTS

GENERAL COMMENTS GEN < >