



CONTACT INFORMATION

Mining Records Curator
Arizona Geological Survey
1520 West Adams St.
Phoenix, AZ 85007
602-771-1601
<http://www.azgs.az.gov>
inquiries@azgs.az.gov

The following file is part of the

Arizona Department of Mines and Mineral Resources Mining Collection

ACCESS STATEMENT

These digitized collections are accessible for purposes of education and research. We have indicated what we know about copyright and rights of privacy, publicity, or trademark. Due to the nature of archival collections, we are not always able to identify this information. We are eager to hear from any rights owners, so that we may obtain accurate information. Upon request, we will remove material from public view while we address a rights issue.

CONSTRAINTS STATEMENT

The Arizona Geological Survey does not claim to control all rights for all materials in its collection. These rights include, but are not limited to: copyright, privacy rights, and cultural protection rights. The User hereby assumes all responsibility for obtaining any rights to use the material in excess of "fair use."

The Survey makes no intellectual property claims to the products created by individual authors in the manuscript collections, except when the author deeded those rights to the Survey or when those authors were employed by the State of Arizona and created intellectual products as a function of their official duties. The Survey does maintain property rights to the physical and digital representations of the works.

QUALITY STATEMENT

The Arizona Geological Survey is not responsible for the accuracy of the records, information, or opinions that may be contained in the files. The Survey collects, catalogs, and archives data on mineral properties regardless of its views of the veracity or accuracy of those data.

ARIZONA DEPARTMENT OF MINES AND MINERAL RESOURCES FILE DATA

PRIMARY NAME: J.C.

ALTERNATE NAMES:

FORT LEE CLAIMS

MOHAVE COUNTY MILS NUMBER: 100A

LOCATION: TOWNSHIP 22 N RANGE 18 W SECTION 12 QTR. SE
LATITUDE:N 35DEG 18MIN 18SEC LONGITUDE:W 114DEG 08MIN 54SEC
TOPO MAP NAME: CERBAT - 7.5 MIN

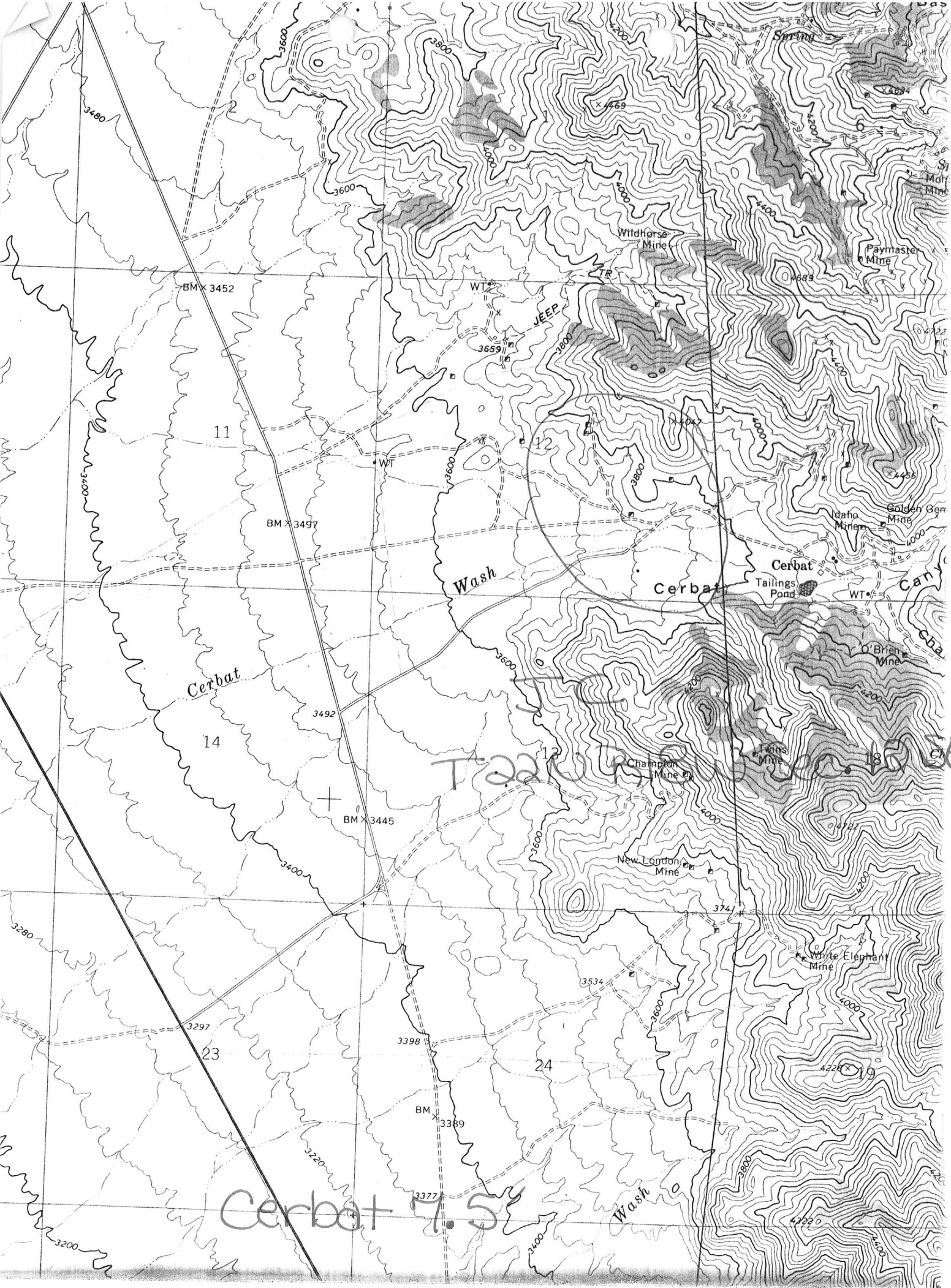
CURRENT STATUS: PAST PRODUCER

COMMODITY:

GOLD-PRIMARY
SILVER-COPRODUCT
COPPER-BYPRODUCT
URANIUM-(M)U308 CONTENT-BYPROD
IRON-(M)HEMATITE-BYPRODUCT
IRON-(M)SULFIDE-BYPRODUCT

BIBLIOGRAPHY:

USGS CERBAT QUAD
ADMR J.C. MINE FILE
A.E.C. PRELIM. RECONN. RPT. 172-485, P. 69
MALACH, ROMAN "CERBAT MTN. CTRY" p. 41 in reference to
Liberty Claim
ADMMR KINGMAN MINING PROJECT - 1 underground assay map



AEC 172-485,
p. 69, 154

DEPARTMENT OF MINERAL RESOURCES
STATE OF ARIZONA
FIELD ENGINEERS REPORT

Mine "JC" Mine

Date May 25, 1953.

District Cerbat (Wallapai)

Engineer George F. Reed

Subject: General Description, Present Status

Location & General Conditions:

The "JC" Mine is reached from Kingman by about 13 miles of road, starting North on Highway 93 to Cerbat Canyon Road and thence North-Easterly by about 4 miles of dirt road to the mine. It is situated in the mouth of the second canyon North of Cerbat. It is in Mohave County, Cerbat (Wallapai) Mining District, Section 12, Twp. 22 N, Range 18 West. The four claim group end-line and sideline the Esmeralda Claim to the North-West and North-East respectively. The claims are called Liberty, Air Mail, Bessie E, Fort Lee and Valley Forge. It has been called "JC" Mine since before 1919. See Book 3-M, pages 217-221 of mines in county recorder's office.

Ownership:

The group is held by annual work (unpatented) by I.M. George, Kingman, Arizona. They are leased to Kenneth C. Kuencer, Western Mines Co., Kingman, Arizona, and Co-Partner, Frank McCurtain, 2205 S. San Pedro, Los Angeles 11, Calif.

Geology & Topography:

The main workings are in gently rolling terrain at the wide mouth of a canyon opening Westward into Sacramento Valley. The wash crosses the main vein between the two principal workings. Water stands within about six feet or less of the surface in this wash. The rocks at the mine are Pre-Cambrian Schists, etc., and some North-West striking rhyolite dikes occur here. The vein is in and along one of these dikes. The strike is North-West and dip about 60 degrees North-East. Over a width of several feet, the rhyolite is mineralized with streaks of quartz carrying iron oxides, copper carbonates and values in gold and silver. Very few sulphides show in the shallow workings. Adits driven North-West and South-East into the sides of the wash attain a depth from surface of about 30 feet and 50 feet respectively. They intersect inclined shafts which attain total depths of about 70 and 100 feet. All the workings show water just below the wash level.

Dimensions & Value of Ore Body:

An old report by R.C. Jacobson in 1919 states that J.C. Connolly was owner at the time and had shipped several cars assaying about \$40.00 per ton at the then prices of gold & silver. One car ran 7% copper. He shows an assay map and gives 2000 tons of ore blocked with 5 foot width at \$12.00 gold plus silver value at old prices. An old Selby Smelter sheet enclosed is dated February 25, 1918, and shows J.J. Connolly shipper, 28.39 dry tons @ 1.97 oz. gold and 1.68 oz. silver. A few samples and assays would verify these figures or disprove them, because very little work has been done since that time.

Present Plans:

Western Mines Co. has a three man crew and have built a head-frame on the North-West workings and are ready to deepen the 70 foot incline. They plan to sink into the water and later do some drifting, depending on results.

George F. Reed