



CONTACT INFORMATION

Mining Records Curator
Arizona Geological Survey
1520 West Adams St.
Phoenix, AZ 85007
602-771-1601
<http://www.azgs.az.gov>
inquiries@azgs.az.gov

The following file is part of the

Arizona Department of Mines and Mineral Resources Mining Collection

ACCESS STATEMENT

These digitized collections are accessible for purposes of education and research. We have indicated what we know about copyright and rights of privacy, publicity, or trademark. Due to the nature of archival collections, we are not always able to identify this information. We are eager to hear from any rights owners, so that we may obtain accurate information. Upon request, we will remove material from public view while we address a rights issue.

CONSTRAINTS STATEMENT

The Arizona Geological Survey does not claim to control all rights for all materials in its collection. These rights include, but are not limited to: copyright, privacy rights, and cultural protection rights. The User hereby assumes all responsibility for obtaining any rights to use the material in excess of "fair use."

The Survey makes no intellectual property claims to the products created by individual authors in the manuscript collections, except when the author deeded those rights to the Survey or when those authors were employed by the State of Arizona and created intellectual products as a function of their official duties. The Survey does maintain property rights to the physical and digital representations of the works.

QUALITY STATEMENT

The Arizona Geological Survey is not responsible for the accuracy of the records, information, or opinions that may be contained in the files. The Survey collects, catalogs, and archives data on mineral properties regardless of its views of the veracity or accuracy of those data.

PRINTED: 09-10-2012

ARIZONA DEPARTMENT OF MINES AND MINERAL RESOURCES AZMILS DATA

PRIMARY NAME: JACKRABBIT BRIDGE PIT

ALTERNATE NAMES:

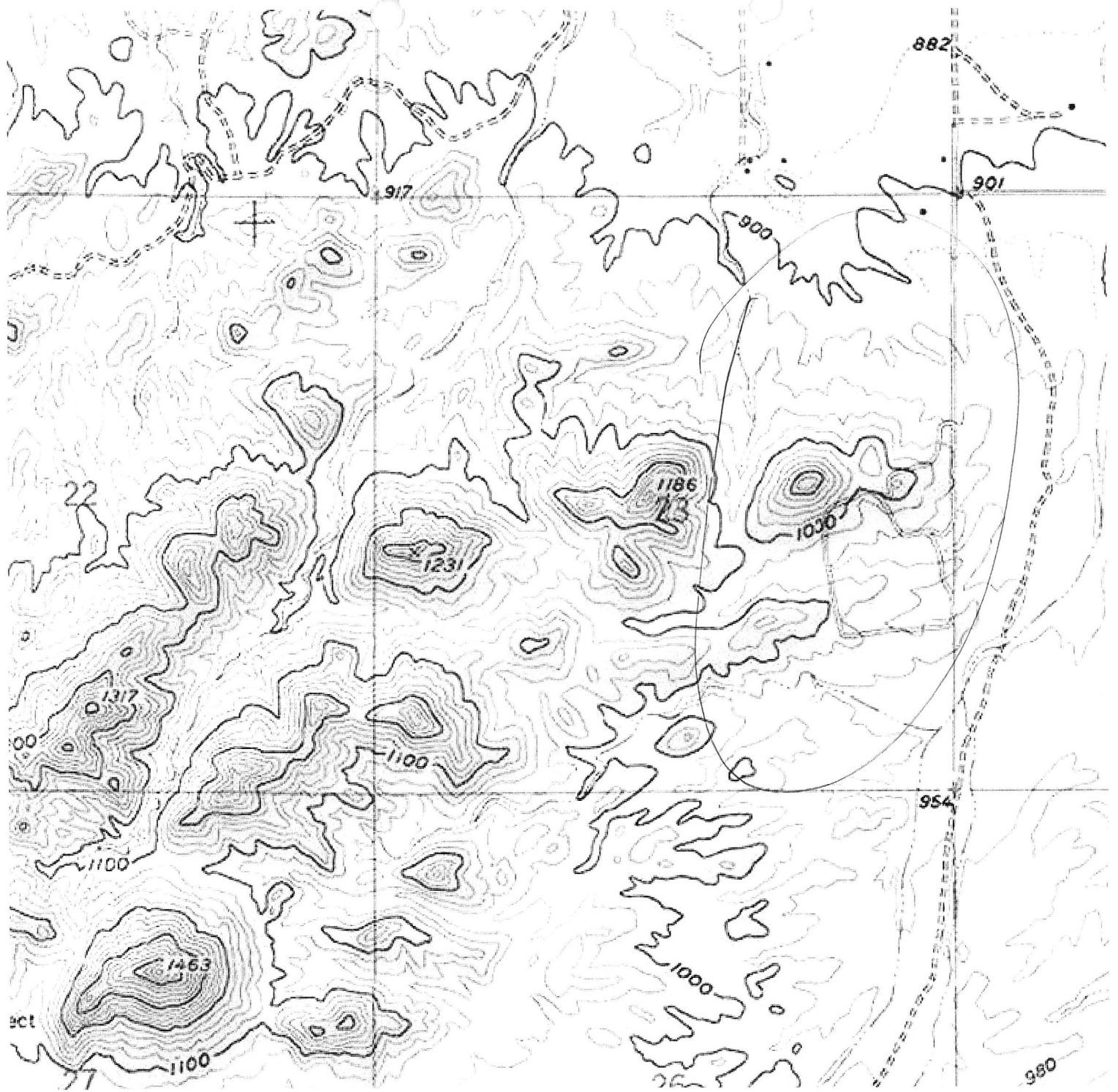
MARICOPA COUNTY MILS NUMBER: 866

LOCATION: TOWNSHIP 1 S RANGE 03 W SECTION 23 QUARTER E2
LATITUDE: N 33DEG 19MIN 36SEC LONGITUDE: W 112DEG 31MIN 44SEC
TOPO MAP NAME: BUCKEYE - 7.5 MIN

CURRENT STATUS: PAST PRODUCER

COMMODITY:
STONE RIPRAP

BIBLIOGRAPHY:
ADMMR JACKRABBIT BRIDGE PIT FILE



Jackrabbit Bridge Pit

INE AND PROSPECT FIELD VISIT DATA SUMMARY

Sheet 1 of 2

COMMODITIES Rock

MILS ID No. .new Date May 12, 1982

ENGINEER Nyal Niemuth and Ken A. Phillips

INFORMATION FROM: same

Pit PROPERTY SUMMARY

I. MINE NAME Jackrabbit Bridge Materials OTHER POSSIBLE NAMES
INCLUDING ANY CLAIM NAMES NOTED

II. LOCATION: T 1S R 3W SEC(S) 23 NE, SE MINE DISTRICT
ELEV. 1000' COUNTY Maricopa TOPO QUAD. Buckeye
DIRECTIONS As on Topo

MAP ATTACHED yes

III. OWNERSHIP: NAME PHONE
ADDRESS:
COMPANY NAME IF ANY:
PERTINENT PEOPLE

IV. PROPERTY AND HOLDINGS:

V. PAST PRODUCTION - NOTED, KNOWN, PROBABLE, UNKNOWN, NONE noted

IV. CURRENT STATUS: Idle

IIV. WORKINGS: Open pit

IIIV. GEOLOGY AND MINERALOGY: DEPOSIT TYPE: Quartzitic meta sediment (schist)

LENGTH: WIDTH: VEIN STRIKE

HOST ROCK: Meta sediment

ECONOMIC MINERALS: Rock (riprap)

COMMENTS:

IX. EQUIPMENT ON SIGHT: Loading ramp

BUCKEYE QUADRANGLE
ARIZONA—MARICOPA CO.
7.5 MINUTE SERIES (TOPOGRAPHIC)
SE/4 BUCKEYE 15' QUADRANGLE

3550 IV NW
(PERRYVILLE)

