



CONTACT INFORMATION

Mining Records Curator
Arizona Geological Survey
1520 West Adams St.
Phoenix, AZ 85007
602-771-1601
<http://www.azgs.az.gov>
inquiries@azgs.az.gov

The following file is part of the

Arizona Department of Mines and Mineral Resources Mining Collection

ACCESS STATEMENT

These digitized collections are accessible for purposes of education and research. We have indicated what we know about copyright and rights of privacy, publicity, or trademark. Due to the nature of archival collections, we are not always able to identify this information. We are eager to hear from any rights owners, so that we may obtain accurate information. Upon request, we will remove material from public view while we address a rights issue.

CONSTRAINTS STATEMENT

The Arizona Geological Survey does not claim to control all rights for all materials in its collection. These rights include, but are not limited to: copyright, privacy rights, and cultural protection rights. The User hereby assumes all responsibility for obtaining any rights to use the material in excess of "fair use."

The Survey makes no intellectual property claims to the products created by individual authors in the manuscript collections, except when the author deeded those rights to the Survey or when those authors were employed by the State of Arizona and created intellectual products as a function of their official duties. The Survey does maintain property rights to the physical and digital representations of the works.

QUALITY STATEMENT

The Arizona Geological Survey is not responsible for the accuracy of the records, information, or opinions that may be contained in the files. The Survey collects, catalogs, and archives data on mineral properties regardless of its views of the veracity or accuracy of those data.

PRINTED: 10/18/2001

ARIZONA DEPARTMENT OF MINES AND MINERAL RESOURCES AZMILS DATA

PRIMARY NAME: JACKNIFE

ALTERNATE NAMES:

MOHAVE COUNTY MILS NUMBER: 440A

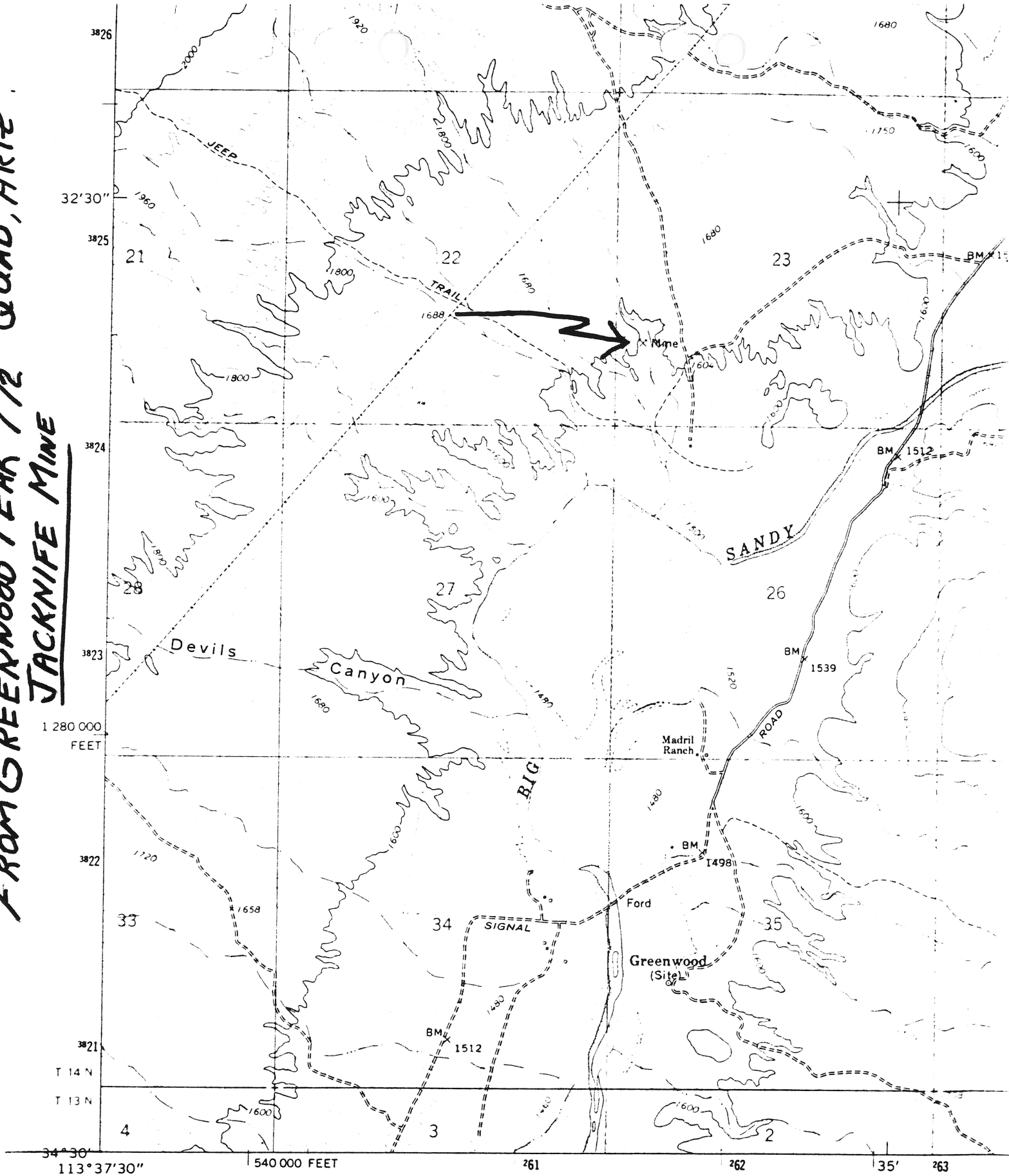
LOCATION: TOWNSHIP 14 N RANGE 13 W SECTION 23 QUARTER SW
LATITUDE: N 34DEG 32MIN 09SEC LONGITUDE: W 113DEG 35MIN 52SEC
TOPO MAP NAME: GREENWOOD PEAK - 7.5 MIN

CURRENT STATUS: UNKNOWN

COMMODITY:
CLAY BENTONITE

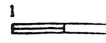
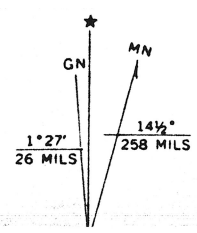
BIBLIOGRAPHY:
USGS GREENWOOD PEAK QUAD
ADMMR JACKNIFE FILE

FROM GREENWOOD PEAK 7 1/2' QUAD, ARIZ
JACKKNIFE MINE



GREENWOOD PEAK
 62,500

Mapped, edited, and published by the Geological Survey
 Control by USGS and USC&GS
 Topography by photogrammetric methods from aerial
 photographs taken 1966. Field checked 1967
 Polyconic projection. 1927 North American datum
 10,000-foot grid based on Arizona coordinate system, west zone
 1000-meter Universal Transverse Mercator grid ticks,
 zone 12, shown in blue



*File in Jackknife
Mine file - Mohave
County*

July 18, 1980

Mr. Donald A. Hantz
Manager of Technical Services
Federal Bentonite Division
609 Fifth Street
Belle Fourche, South Dakota 57717

Dear Mr. Hantz:

At the request of Mr. Gerald Wootten of Springerville, Arizona, I am sending you splits from four samples of bentonitic material in a separate package. Mr. Wootten reports he has collected the samples from the Jackknife Mine in Mohave County, Arizona, located in the SW $\frac{1}{4}$, Sec. 23, T14N, R13W, G&SR., B & M. Mr. Wootten reports to own or hold an equity interest in the deposit. Department engineers have not yet visited the property. Such a visit, which would be valuable in helping to determine the mine's and operator's potential, can be made and is a free service of the Department. Such visits are usually of value to both the potential buyer and the owner-operator.

The Arizona Department of Mineral Resources is a non-regulatory state agency, charged with aiding in the promotion and development of Arizona's mines and mineral resources. The Department provides a variety of technical assistance to those engaged in the minerals industry.

Assisting mine owners and potential operators in finding markets for their products is one of the duties of the Department. A companion duty is to assist those needing a source of supply.

Any information regarding your firm's interest in purchasing crude bentonite and in evaluating or acquiring bentonite prospects would be appreciated.

Thank you very much.

Sincerely,

KAP:at

Ken A. Phillips
Mineral Resources Engineer

JACKNIFE (MINE FILE)

MOHAVE CO.

KAP WR 6/27/80 - Gerald Wooten, P.O. Box 995, Springerville, Az. 85925, and his son Jerry Wooten brought in samples of bentonite from a deposit located in the southwest quarter Sec. 23, T14N, R13W (private land and minerals) Mohave County. He referred to the property as the Jackknife. The four samples will be divided and one split sent to George Alther IMC Foundry Products and the other half sent to the U.S. Bureau of Mines at Tuscaloosa Alabama. It is possible the U.S. Bureau of Mines may have sampled and evaluated the deposit in years past.

KAP WR 7/18/80 - Gerald Wooten of Springerville requested that we send a split from his bentonite samples from Jackknife Mine, Mohave Co, to Donald A. Hantz, Manager of Technical Services, Federal Bentonite, 609 Fifth Street, Belle Fourch, South Dakota 57717. The samples and a letter requesting information on Federal Bentonite's interest in Arizona bentonite properties was sent.

Buy Manakee, ASARCO, Sacaton Unit, requested information on possible sources of bentonite for evaporation pond lining. Gerald Wooten's Jackknife property was suggested as a possibility.

KAP WR 8/8/80: Gerald Wooten reported he is still trying to find buyers for his bentonite from his Jackknife Mine, Mohave County.

KAP WR 10/10/80: Clay Thorne, Payson, reported he has state leases on a portion of the Jackknife bentonite property near Wickieup which is on state land. He reported that a consulting geologist named Phil Hoyt wrote a report on the property and reportedly stated that the deposit contained 17 million tons of proven bentonite and 40 million tons of probable bentonite. Phil Hoyt is the geologist and/or mining engineer (?) who wrote the report on the viability of the Mica Mule Mine.