



## **CONTACT INFORMATION**

Mining Records Curator  
Arizona Geological Survey  
1520 West Adams St.  
Phoenix, AZ 85007  
602-771-1601  
<http://www.azgs.az.gov>  
[inquiries@azgs.az.gov](mailto:inquiries@azgs.az.gov)

The following file is part of the

Arizona Department of Mines and Mineral Resources Mining Collection

## **ACCESS STATEMENT**

These digitized collections are accessible for purposes of education and research. We have indicated what we know about copyright and rights of privacy, publicity, or trademark. Due to the nature of archival collections, we are not always able to identify this information. We are eager to hear from any rights owners, so that we may obtain accurate information. Upon request, we will remove material from public view while we address a rights issue.

## **CONSTRAINTS STATEMENT**

The Arizona Geological Survey does not claim to control all rights for all materials in its collection. These rights include, but are not limited to: copyright, privacy rights, and cultural protection rights. The User hereby assumes all responsibility for obtaining any rights to use the material in excess of "fair use."

The Survey makes no intellectual property claims to the products created by individual authors in the manuscript collections, except when the author deeded those rights to the Survey or when those authors were employed by the State of Arizona and created intellectual products as a function of their official duties. The Survey does maintain property rights to the physical and digital representations of the works.

## **QUALITY STATEMENT**

The Arizona Geological Survey is not responsible for the accuracy of the records, information, or opinions that may be contained in the files. The Survey collects, catalogs, and archives data on mineral properties regardless of its views of the veracity or accuracy of those data.

PRINTED: 03/05/2003

ARIZONA DEPARTMENT OF MINES AND MINERAL RESOURCES AZMILS DATA

PRIMARY NAME: JACK POT CLAIMS

ALTERNATE NAMES:

SANTA CRUZ COUNTY MILS NUMBER: 248

LOCATION: TOWNSHIP 23 S RANGE 11 E SECTION 6 QUARTER SW  
LATITUDE: N 31DEG 27MIN 11SEC LONGITUDE: W 111DEG 15MIN 23SEC  
TOPO MAP NAME: ORO BLANCO - 15 MIN

CURRENT STATUS: EXP PROSPECT

COMMODITY:  
GOLD  
SILVER

BIBLIOGRAPHY:  
ADMMR JACK POT CLAIMS FILE  
CLAIMS EXTEND INTO SEC 7 N2

JACK POT CLAIMS

SANTA CRUZ COUNTY

HM WR 4/1/88: Charles Porter provided file information on the Jack Pot lode claims, T23S R11E Sec 6 and 7, Santa Cruz County, just north of the Margarita Mine (file). This data includes six rotary drill hole logs supplied by Mr. Porter's client, C. Hagerty.

---

## DIAMOND DRILL RECORD

DEPTH IN FEET	(ppm) A <sub>1</sub>	(oz/ton) A <sub>2</sub>	DESCRIPTION	DEPTH
30-35	.03	<.1	Light grayish green, silicified Jcr, with none to trace FeOx and moderate to heavy fresh pyrite, ranging from large cubes to fine disseminations.	
35-40	.09	<.1		
40-45	.11	<.1		
45-50	.05	<.1		
50-55	.01	<.1		
55-60	<.01	<.1		
60-65	.02	<.1	Light green to dark green, silicified Jcr, with moderate fresh pyrite.	
65-70	.01	<.1	90% light green - 10% dark green, Jcr, minor to moderate pyrite.	
70-75	.03	<.1	50-50 light and dark green silicified Jcr, with moderate fresh pyrite.	
75-80	.04	<.1	Grayish dark green Jcr with minor fresh pyrite.	
			Hit water	

# DIAMOND DRILL RECORD

**PROPERTY** Ruby  
**LOCATION** \_\_\_\_\_  
**NEAREST TOWN** \_\_\_\_\_  
**PROPERTY** \_\_\_\_\_  
**DATE** \_\_\_\_\_  
**DRILLER** \_\_\_\_\_

**COLLAR ELEVATION** \_\_\_\_\_  
**SURVEYED COLLAR ELEVATION** \_\_\_\_\_  
**AZIMUTH / TRUE BEARING** \_\_\_\_\_  
**INCLINATION** \_\_\_\_\_  
**CORE SIZE** \_\_\_\_\_

**DATE STARTED** \_\_\_\_\_  
**DATE COMPLETED** \_\_\_\_\_  
**DRILLED BY** \_\_\_\_\_  
**LOGGED BY** \_\_\_\_\_

DEPTH	(ppm) Au	(oz/ton) Ag	DESCRIPTION	DEPTH	CORE ANALYSIS
0-5	.02	< .1	White-green Jcr and MnOx stained rock, moderate FeOx, minor limonite after pyrite and minor to moderate fresh sulphides (pyrite).		
5-10	.01	< .1	No visible fresh pyrite.		
10-15	.01	< .1	Grayish green, silicified Jcr, moderate hematite and minor to moderate limonite pseudos.		
15-20	.04	< .1	Moderate limonite pseudomorphs of pyrite.		
20-25	< .01	< .1			
25-30	.01	< .1	Fresh gray-green, silicified Jcr and hematite stained Jcr, fresh pyrite (heavy) and moderate limonite after pyrite.		

DIAMOND DRILL RECORD

DEPTH FEET	(ppm) Au	(oz/ton) Ag	DESCRIPTION	DEPTH	CORE NO.
30-35	<.01	<.1	Gray-green, silicified Jcr, with minor to moderate FeOx and heavy		
			fresh pyrite.		
35-40	<.01	<.1	Gray-green Jcr, silicified, minor FeOx, very heavy pyrite.		
40-90	<.01	<.1	Gray-green, silicified Jcr, very heavy to heavy pyrite.		
90-95	.07	<.1			
95-100	1.04	<.1			

PROPERTY Ruby  
 LOCATION \_\_\_\_\_  
 RMP QUADRANGLE \_\_\_\_\_  
 LATITUDE \_\_\_\_\_  
 LONGITUDE \_\_\_\_\_

DIAMOND DRILL RECORD

COLLAR ELEVATION \_\_\_\_\_  
 SURVEYED COLLAR ELEVATION \_\_\_\_\_  
 AZIMUTH/TRE BEARING \_\_\_\_\_  
 INCLINATION \_\_\_\_\_  
 CORE SIZE \_\_\_\_\_

DATE ST \_\_\_\_\_  
 DWE \_\_\_\_\_  
 FIRM \_\_\_\_\_  
 DRILL \_\_\_\_\_  
 LOGGA \_\_\_\_\_

FEET	(ppm) Au	(oz/ton) Ag	DESCRIPTION	DEPTH	GR
0-5	.01	< .1			
5-10	.13	< .1	Moderately FeOx stained, gray-green, silicified Jcr.		
10-15	.03	< .1	Minor fresh pyrite and limonite after pyrite.		
15-20	< .01	< .1	Gray-green Jcr with moderate FeOx.		
20-25	.04	< .1			
25-30	.01	< .1	Gray-green, silicified Jcr, minor FeOx, trace to minor pyrite.		
30-35	.06	< .1			
35-40	.02	< .1			
40-45	.10	< .1			
45-50	.22	.1			
50-55	.14	< .1	Gray-green, silicified Jcr, trace FeOx, moderate pyrite.		
			Hit water		

## DIAMOND DRILL RECORD

PROPERTY Ruby  
 LOCATION \_\_\_\_\_  
 QUADRANGLE \_\_\_\_\_  
 LATITUDE \_\_\_\_\_  
 LONGITUDE \_\_\_\_\_

COLLAR ELEVATION \_\_\_\_\_  
 SURVEYED COLLAR ELEVATION \_\_\_\_\_  
 AZIMUTH/TRUE BEARING \_\_\_\_\_  
 INCLINATION \_\_\_\_\_  
 CORE SIZE \_\_\_\_\_

DATE START \_\_\_\_\_  
 DATE COMPLETED \_\_\_\_\_  
 DRILLED BY \_\_\_\_\_  
 LOGGED BY \_\_\_\_\_

DEPTH FEET	(ppm) Au	(oz/ton) Ag	DESCRIPTION	DEPTH	CORE ANAL.
0-5	<.01	<.1	Very heavily hematite stained Jcr with moderate limonite after pyrite.		
5-10	<.01	<.1	Gray Jcr with moderate FeOx, minor limonite pseudos and minor MnOx.		
10-15	.02	<.1	Gray Jcr, moderate FeOx and fresh pyrite.		
15-20	<.01	<.1			
20-25	.44	<.1	Gray Jcr, silicified, minor to moderate hematite stains, moderate to heavy fresh pyrite.		
25-30	.07	<.1	Gray-green to gray Jcr with micro silica veinlets and moderate to heavy pyrite.		



**DIAMOND DRILL RECORD**

DEPTH	GPM A <sub>2</sub>	(oz/ton) A <sub>3</sub>	DESCRIPTION	DEPTH	CORR AMT
40-60	.02	< .1	Heavy to very heavy fresh pyrite as individual crystals and large,		
40-65	.03	< .1	massive patches.		
65-70	.02	< .1			
70-80	< .01	< .1	Moderate to heavy pyrite.		
85-85	.01	< .1	Gray Jcr, silicified, heavy, fresh pyrite.		
85-90	.03	< .1			
90-95	.03	< .1			

# DIAMOND DRILL RECORD

**PROPERTY** Ruby  
**LOCATION** \_\_\_\_\_  
**MAP QUADRANGLE** \_\_\_\_\_  
**LATITUDE** \_\_\_\_\_  
**LONGITUDE** \_\_\_\_\_

**COLLAR ELEVATION** \_\_\_\_\_  
**SURVEYED COLLAR ELEVATION** \_\_\_\_\_  
**AZIMUTH/TRUE BEARINGS** \_\_\_\_\_  
**INCLINATION** \_\_\_\_\_  
**CORE SIZE** \_\_\_\_\_

**DATE STARTED** \_\_\_\_\_  
**DATE COMPLETED** \_\_\_\_\_  
**FINAL LOG** \_\_\_\_\_  
**DRILLED** \_\_\_\_\_  
**LOGGED** \_\_\_\_\_

DEPTH	(ppm) Au	(oz/ton) Ag	DESCRIPTION	DEPTH	CORRECTION
0-5	.02	<.1	Gray-green, silicified Jcr, moderate to heavy hematite staining, moderate limonite after pyrite.		
5-10	.01	<.1			
10-15	.02	<.1	Slight increase in FeOx.		
15-25	<.01	<.1	FeOx stained sidewinder monzonite.		
25-30	.02	<.1	FeOx stained sidewinder monzonite with gray-green Jcr, silicified and minor to moderate fresh pyrite.		
30-35	<.01	<.1	Gray-green, silicified Jcr with some sidewinder and moderate fresh pyrite.		



# DIAMOND DRILL RECORD

**PROPERTY** Ruby  
**LOCATION** \_\_\_\_\_  
**QUADRANGLE** \_\_\_\_\_  
**ALTITUDE** \_\_\_\_\_  
**LONGITUDE** \_\_\_\_\_

**COLLAR ELEVATION** \_\_\_\_\_  
**SURVEYED COLLAR ELEVATION** \_\_\_\_\_  
**AZIMUTH/TRUE BEARING** \_\_\_\_\_  
**INCLINATION** \_\_\_\_\_  
**CORE SIZE** \_\_\_\_\_

**DATE START** \_\_\_\_\_  
**DATE CO** \_\_\_\_\_  
**FINAL D** \_\_\_\_\_  
**DRILLED** \_\_\_\_\_  
**LOGGED** \_\_\_\_\_

DEPTH	(ppm) Au	(oz/ton) Ag	DESCRIPTION	DEPTH	CORE ANAL.
0-5	.02	< .1	White silica, moderate to heavy hematite staining, trace fresh pyrite.		
5-10	.03	< .1	Silica and dark gray, silicified Jcr, moderate to heavy hematite, minor limonite after pyrite and trace fresh pyrite.		
10-15	.04	< .1			
15-20	.02	< .1	Slightly less FeOx, no fresh pyrite, moderate dark gray metallic (?) substance.		
20-25	< .01	< .1	White - dark gray, silicified Jcr with minor to moderate FeOx and limonite pseudos.		
25-30	.08	< .1	Minor fresh pyrite also.		

## DIAMOND DRILL RECORD

DEPTH IN FEET	(ppm) Au	(oz/ton) Ag	DESCRIPTION	DEPTH	COR AN
30-35	.02	< .1	Grayish green to gray, silicified Jcr, with heavy fresh pyrite, some micro silica veinlets.		
35-40	< .01	< .1	Moderate to heavy fresh pyrite.		
40-50	< .01	.1	Grayish pink and green-gray, silicified Jcr with minor pyrite.		
50-55	.30	< .1			
55-65	< .01	< .1	Very dark gray and dark grayish green Jcr (?) with a trace of pyrite.		
65-75	< .01	< .1	Minor pyrite.		

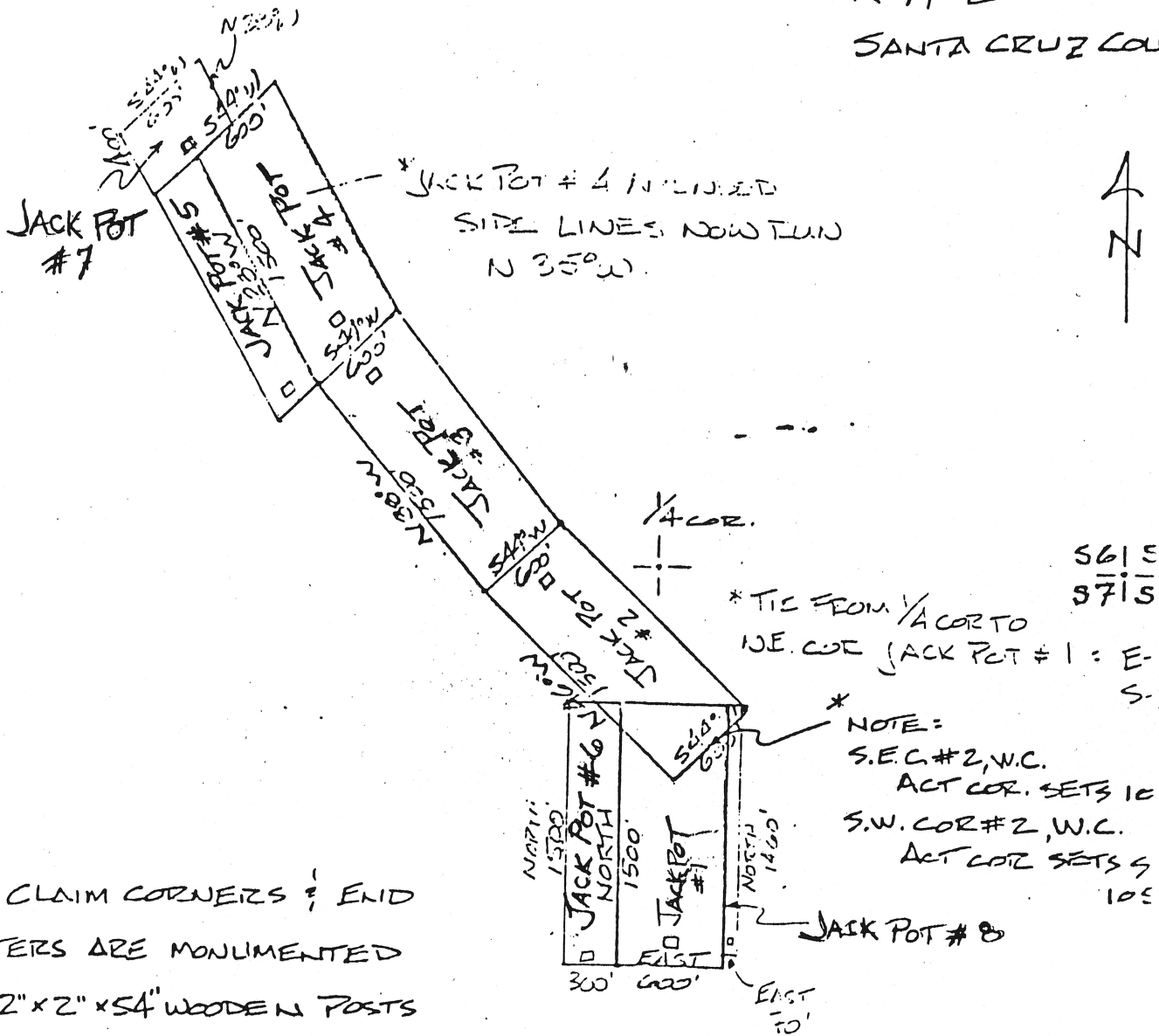
# JACK POT LODGE CLAIMS

## GROUPS 1-4

T 235

R 11 E

SANTA CRUZ COU



NOTES:

1. ALL CLAIM CORNERS & END CENTERS ARE MONUMENTED W/ 2" X 2" X 54" WOODEN POSTS SET IN ROCK MOUNDS & TAGGED W/ METAL TAGS.
2. NE CORNER OF EACH CLAIM IS TIED IN TO 1/4 COR.
3. □ SYMBOLS INDICATE DM'S
4. BASE OF BEARINGS — BRINTON COMPASS & PROTRACTOR
5. DISTANCES — 300' STEEL TAPE & KERU 502 EDM

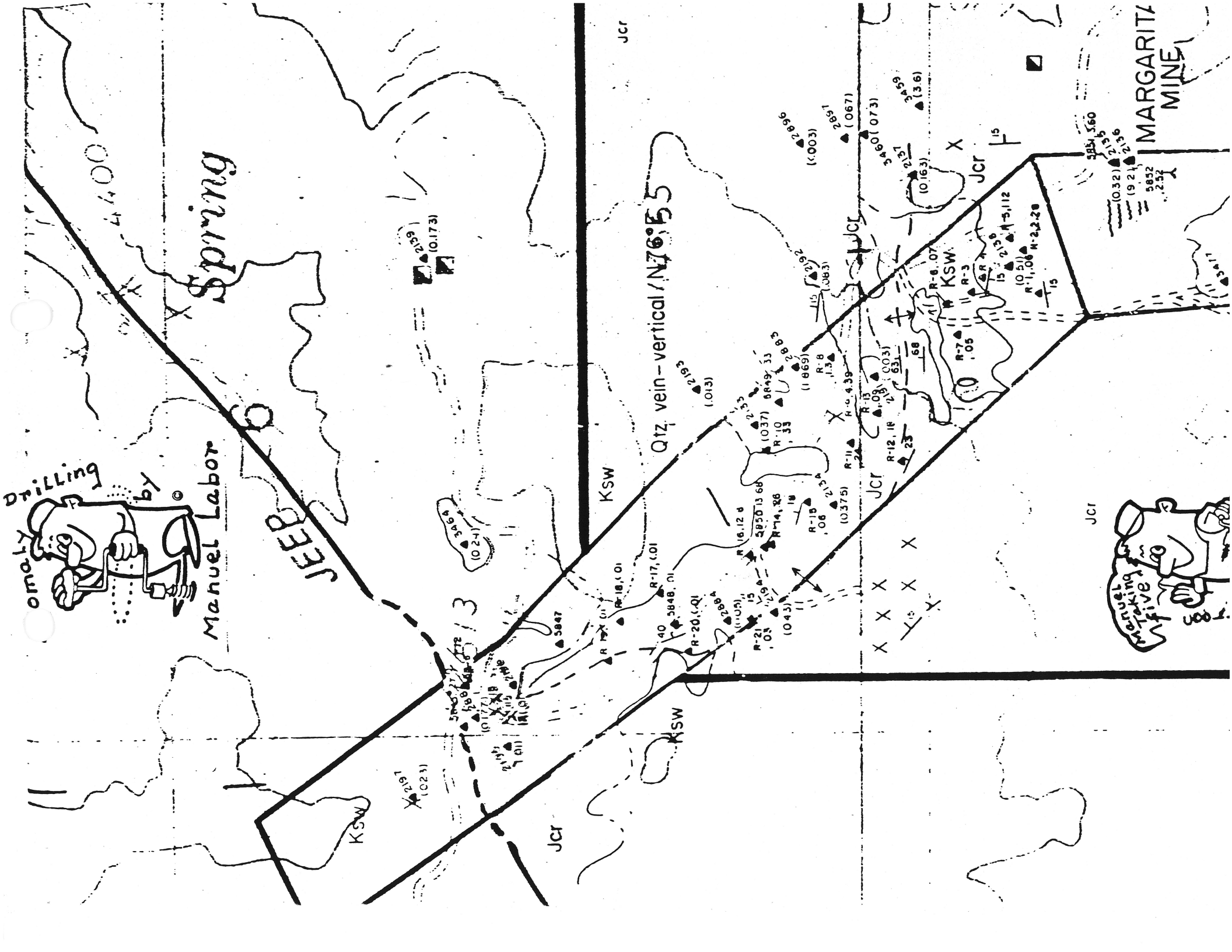
Manuel Labor  
by  
Drilling

Spring

JEEP

Qtz. vein - vertical / N76°E55

MARGARITZ MINE



DIAMOND DRILL RECORD

R-1

SHEET

PROPERTY Ruby  
 LOCATION T 235 R 11E JACKPOT 1-4 SEC 6#7  
 COUNTY \_\_\_\_\_  
 STATE \_\_\_\_\_  
 DISTRICT \_\_\_\_\_

~~Cumberland~~  
~~Georgia~~

COLLAR ELEVATION \_\_\_\_\_  
 SURVEYED COLLAR ELEVATION \_\_\_\_\_  
 AZIMUTH/TRUE BEARING \_\_\_\_\_  
 INCLINATION \_\_\_\_\_  
 CORE SIZE \_\_\_\_\_

DATE STARTED \_\_\_\_\_  
 DATE COMPLETED \_\_\_\_\_  
 FINAL DEPTH \_\_\_\_\_  
 DRILLED BY \_\_\_\_\_  
 LOGGED BY \_\_\_\_\_

*before gold sil*

DEPTH	(ppm) Au	(oz/ton) Ag	DESCRIPTION	DEPTH	CORE ANGLE
0-5	.06	.1	Silicified gray Jcr, some micro silicified fractures, moderate FeOx, minor limonite after pyrite.		
5-10	2.31	.2	Moderate limonite after pyrite, slight MnOx.		
10-15	.22	.1	Gray to grayish green silicified Jcr, with moderate hematite and minor to moderate limonite cubes, occasional vugs.		
15-20	.11	< .1	Slightly less than moderate FeOx, minor limonite moderate MnOx.		
20-25	.24	< .1			
25-30	.29	< .1	Grayish light green, silicified Jcr with minor FeOx and moderate fresh pyrite.		