



CONTACT INFORMATION

Mining Records Curator
Arizona Geological Survey
1520 West Adams St.
Phoenix, AZ 85007
602-771-1601
<http://www.azgs.az.gov>
inquiries@azgs.az.gov

The following file is part of the

Arizona Department of Mines and Mineral Resources Mining Collection

ACCESS STATEMENT

These digitized collections are accessible for purposes of education and research. We have indicated what we know about copyright and rights of privacy, publicity, or trademark. Due to the nature of archival collections, we are not always able to identify this information. We are eager to hear from any rights owners, so that we may obtain accurate information. Upon request, we will remove material from public view while we address a rights issue.

CONSTRAINTS STATEMENT

The Arizona Geological Survey does not claim to control all rights for all materials in its collection. These rights include, but are not limited to: copyright, privacy rights, and cultural protection rights. The User hereby assumes all responsibility for obtaining any rights to use the material in excess of "fair use."

The Survey makes no intellectual property claims to the products created by individual authors in the manuscript collections, except when the author deeded those rights to the Survey or when those authors were employed by the State of Arizona and created intellectual products as a function of their official duties. The Survey does maintain property rights to the physical and digital representations of the works.

QUALITY STATEMENT

The Arizona Geological Survey is not responsible for the accuracy of the records, information, or opinions that may be contained in the files. The Survey collects, catalogs, and archives data on mineral properties regardless of its views of the veracity or accuracy of those data.

ARIZONA DEPARTMENT OF MINES AND MINERAL RESOURCES FILE DATA

PRIMARY NAME: IRON DUKE GROUP

ALTERNATE NAMES:

MOHAVE COUNTY MILS NUMBER: 151A

LOCATION: TOWNSHIP 26 N RANGE 16 W SECTION 13 QTR. N2
LATITUDE:N 35DEG 38MIN 43SEC LONGITUDE:W 113DEG 56MIN 24SEC
TOPO MAP NAME: MUSIC MTN NW - 7.5 MIN

CURRENT STATUS: EXP PROSPECT

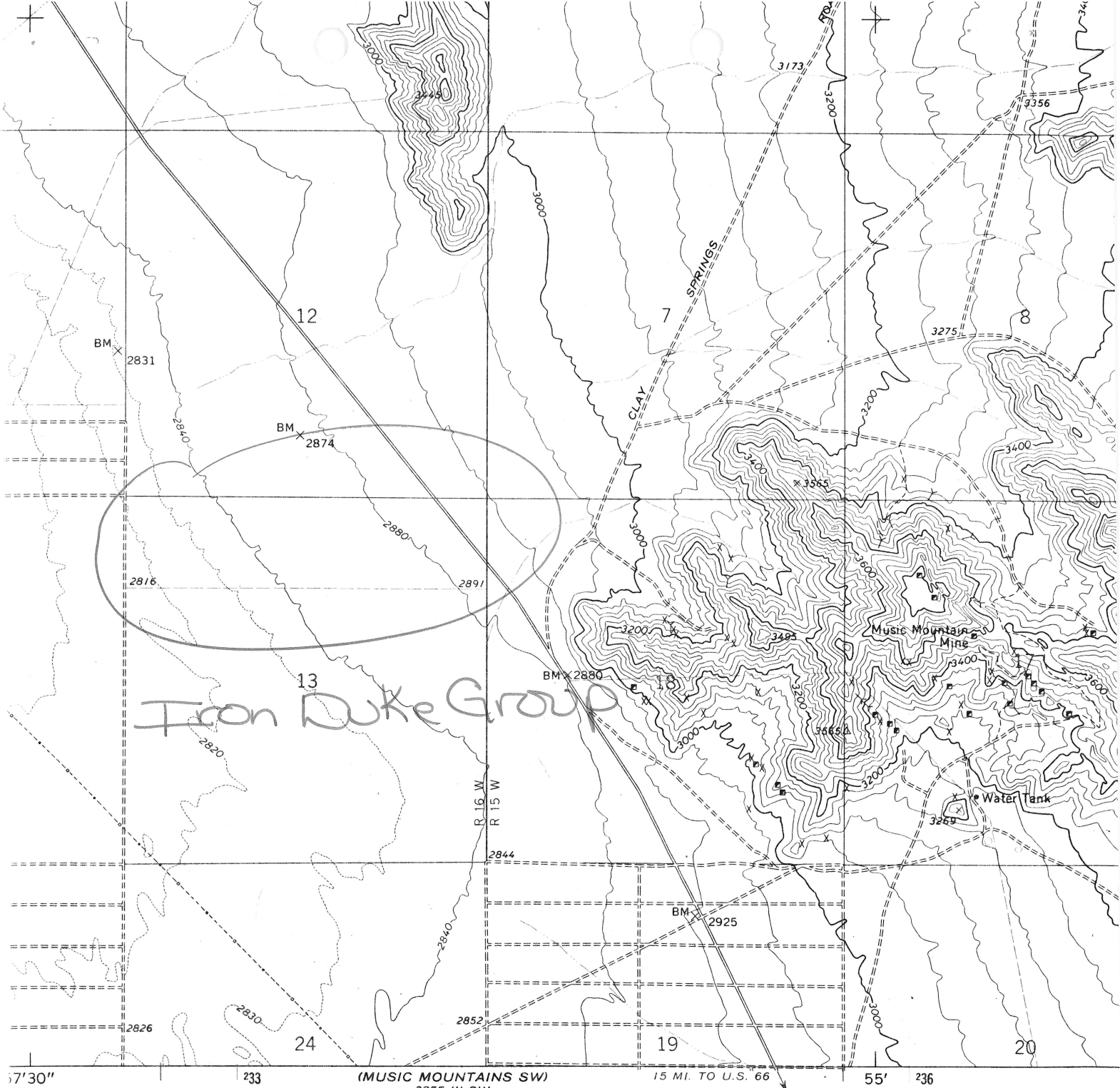
COMMODITY:

GOLD-PRIMARY

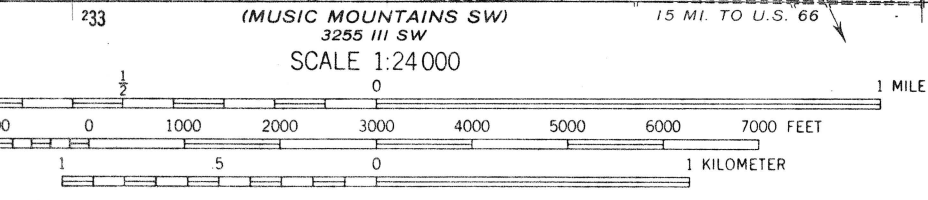
SILVER-COPRODUCT

BIBLIOGRAPHY:

ADMR IRON DUKE GROUP FILE



Iron Duke Group



CONTOUR INTERVAL 40 FEET
 DOTTED LINES REPRESENT 10-FOOT CONTOURS
 DATUM IS MEAN SEA LEVEL

Music Mtn. NW 7.5'

THIS MAP COMPLIES WITH NATIONAL MAP ACCURACY STANDARDS
 FOR SALE BY U. S. GEOLOGICAL SURVEY, DENVER, COLORADO 80225, OR WASHINGTON, D. C. 20242
 A FOLDER DESCRIBING TOPOGRAPHIC MAPS AND SYMBOLS IS AVAILABLE ON REQUEST



DEPARTMENT OF MINERAL RESOURCES
STATE OF ARIZONA
FIELD ENGINEERS REPORT

Mine
District Music Mountain
Subject: Recorded production

Date March 7, 1983
Engineer Ken A. Phillips

Recorded production from the Music Mountain Mining District, Mohave County according to an abstract of U.S. Bureau of Mines data was obtained from the Arizona Bureau of Geology and Mineral Technology.

Production is recorded for the period 1886-1948.

Cumulative totals are:	Tons of ore	9500
	Pounds of copper	3000
	Pounds of lead	3800
	Troy ounces of gold	4500
	Troy ounces of silver	12,000

The following mines or mining claims in the district contributed to the production:

Music Mountain Mine (Luck Now Mine)	Neilson
Iron Duke	North Star
June	Roosevelt
Louis	
Metalic Summit	
Mohawk	

ARIZONA DEPARTMENT OF MINERAL RESOURCES
MINERAL BUILDING, FAIRGROUNDS
PHOENIX, ARIZONA

October 20, 1958

To the Owner or Operator of the Arizona Mining Property named below:

IRON DUKE GROUP (Mohave County) Gold
(Property) (ore)

We have an old listing of the above property which we would like to have brought up to date.

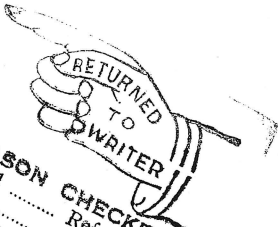
Please fill out the enclosed Mine Owner's Report form with as complete detail as possible and attach copies of reports, maps, assay returns, shipment returns or other data which you have not sent us before and which might interest a prospective buyer in looking at the property.

Frank P Knight

FRANK P. KNIGHT,
Director.

Enc: Mine Owner's Report

PHOENIX
OCT 20
8-PM
1958
ARIZ.



REASON CHECKED
Unclaimed
Unknown
Insufficient address
Moved
No such office in state
Do not return in this envelope
POSTAGE AND 2 CENTS

Mr. T. J. Newton
Kingman
Arizona

MISCELLANEOUS

S R T xCal STO
51 181

11/11

Date

Section

Date

DEPARTMENT OF MINERAL RESOURCES

State of Arizona

MINE OWNER'S REPORT

4
Kingman, Ariz

Date 9/24/46

1. Mine: Iron Dike Group

2. Location: Sec ^{NW 1/4} 13 Twp 24N Range 15W Nearest Town Antares

Distance 4 Direction S Road Condition Fair

3. Mining District & County: Music Mt Mohave

4. Former Name of Mine:

5. Owner: T. J. Newton & C. C. Grider

Address: Kingman, Ariz

6. Operator: same

Address:

7. Principal Minerals: A4

8. Number of Claims: 3 Lode Placer

Patented Unpatented

9. Type of Surrounding Terrain: Rolling

10. Geology & Mineralization: Granite Gneiss & Schist

large amount hornblende & mica

Strike N 80° E 3" to 11" wide

Dip Flat

11. Dimension & Value of Ore Body:

15 Assays show average value 0.16 oz A4

15 " " " " 0.10 A9

samples taken at points selected by owner

R#

12. Ore "Blocked Out" or "In Sight": *None*

Ore Probable: *?*

13. Mine Workings—Amount and Condition:

No.	Feet	Condition
Shafts <i>1</i>	<i>51'</i>	<i>Fair</i>
Raises		
Tunnels	<i>181</i>	
Crosscuts		
Stopes		<i>small</i>

14. Water Supply:

15. Brief History: *located 7/1/40 by G.H. McDonald
deeded to present owners later
No production*

16. Signature:

17. If Property for Sale, List Approximate Price and Terms: