



CONTACT INFORMATION

Mining Records Curator
Arizona Geological Survey
1520 West Adams St.
Phoenix, AZ 85007
602-771-1601
<http://www.azgs.az.gov>
inquiries@azgs.az.gov

The following file is part of the

Arizona Department of Mines and Mineral Resources Mining Collection

ACCESS STATEMENT

These digitized collections are accessible for purposes of education and research. We have indicated what we know about copyright and rights of privacy, publicity, or trademark. Due to the nature of archival collections, we are not always able to identify this information. We are eager to hear from any rights owners, so that we may obtain accurate information. Upon request, we will remove material from public view while we address a rights issue.

CONSTRAINTS STATEMENT

The Arizona Geological Survey does not claim to control all rights for all materials in its collection. These rights include, but are not limited to: copyright, privacy rights, and cultural protection rights. The User hereby assumes all responsibility for obtaining any rights to use the material in excess of "fair use."

The Survey makes no intellectual property claims to the products created by individual authors in the manuscript collections, except when the author deeded those rights to the Survey or when those authors were employed by the State of Arizona and created intellectual products as a function of their official duties. The Survey does maintain property rights to the physical and digital representations of the works.

QUALITY STATEMENT

The Arizona Geological Survey is not responsible for the accuracy of the records, information, or opinions that may be contained in the files. The Survey collects, catalogs, and archives data on mineral properties regardless of its views of the veracity or accuracy of those data.

PRINTED: 09/21/2001

ARIZONA DEPARTMENT OF MINES AND MINERAL RESOURCES AZMILS DATA

PRIMARY NAME: INDIAN SPRINGS DEPOSIT

ALTERNATE NAMES:

GILA COUNTY MILS NUMBER: 63B

LOCATION: TOWNSHIP 2 S RANGE 16 E SECTION 5 QUARTER C

LATITUDE: N 33DEG 17MIN 15SEC LONGITUDE: W 110DEG 43MIN 56SEC

TOPO MAP NAME: CUTTER - 7.5 MIN

CURRENT STATUS: EXP PROSPECT

COMMODITY:

ASBESTOS

BIBLIOGRAPHY:

ADMMR INDIAN SPRINGS DEPOSIT FILE

STEWART, L A "CHRYSS-ASB DPSTS AZ"USBM IC 7706

P 107; 1955

ADMMR MAPS (UPSTAIRS FLAT FILE #7)

MNG WORLD, 8/1953

05/29/98

ARIZONA DEPARTMENT OF MINES AND MINERAL RESOURCES FILE DATA

PRIMARY NAME: INDIAN SPRINGS DEPOSIT

ALTERNATE NAMES:

GILA COUNTY MILS NUMBER: 63B

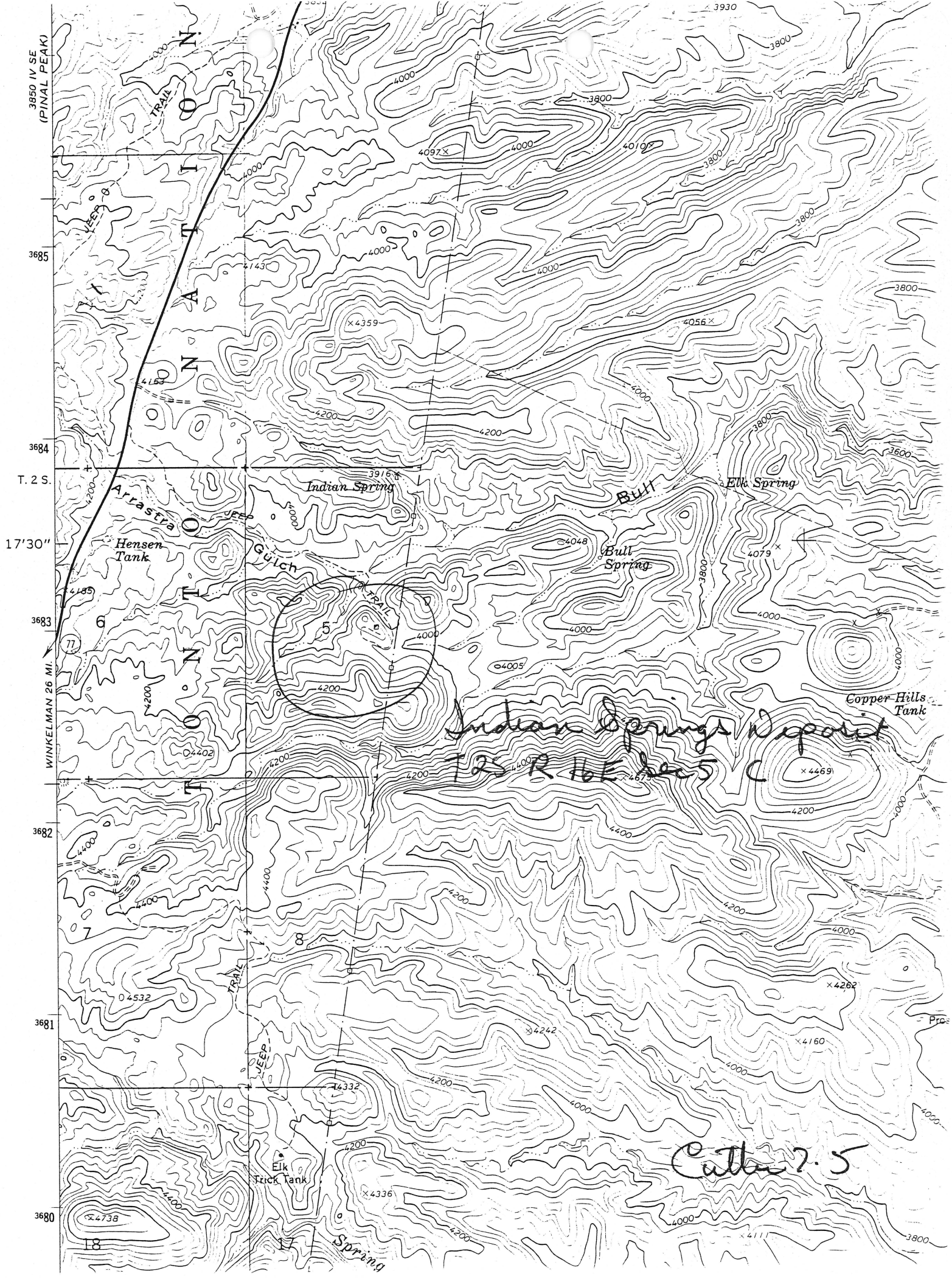
LOCATION: TOWNSHIP 2 S RANGE 16 E SECTION 5 QUARTER C
LATITUDE: N 33DEG 17MIN 15SEC LONGITUDE: W 110DEG 43MIN 56SEC
TOPO MAP NAME: CUTTER - 7.5 MIN

CURRENT STATUS: EXP PROSPECT

COMMODITY:
ASBESTOS

BIBLIOGRAPHY:

ADMMR INDIAN SPRINGS DEPOSIT FILE
STEWART, L A "CHRYSS-ASB DPSTS AZ"USBM IC 7706
P 107; 1955
ADMMR MAPS (UPSTAIRS FLAT FILE #7)
MNG WORLD, 8/1953



INDIAN SPRINGS DEPOSIT

GILA COUNTY

NJN WR 4/24/87: Charles Merritt (card) reports that he has found gold in limestone at the Indian Springs Deposit (file), Gila County. This occurrence was only previously known for asbestos. Mr. Merritt plans to further evaluate the precious metal potential at this site.

NJN WR 9/11/87: Chuck Merritt (card) visited and reported that his follow up assays at the Indian Springs Deposit (file) Gila County found no gold. The previous reported gold was due to an assay error.
