



## **CONTACT INFORMATION**

Mining Records Curator  
Arizona Geological Survey  
1520 West Adams St.  
Phoenix, AZ 85007  
602-771-1601  
<http://www.azgs.az.gov>  
[inquiries@azgs.az.gov](mailto:inquiries@azgs.az.gov)

The following file is part of the

Arizona Department of Mines and Mineral Resources Mining Collection

## **ACCESS STATEMENT**

These digitized collections are accessible for purposes of education and research. We have indicated what we know about copyright and rights of privacy, publicity, or trademark. Due to the nature of archival collections, we are not always able to identify this information. We are eager to hear from any rights owners, so that we may obtain accurate information. Upon request, we will remove material from public view while we address a rights issue.

## **CONSTRAINTS STATEMENT**

The Arizona Geological Survey does not claim to control all rights for all materials in its collection. These rights include, but are not limited to: copyright, privacy rights, and cultural protection rights. The User hereby assumes all responsibility for obtaining any rights to use the material in excess of "fair use."

The Survey makes no intellectual property claims to the products created by individual authors in the manuscript collections, except when the author deeded those rights to the Survey or when those authors were employed by the State of Arizona and created intellectual products as a function of their official duties. The Survey does maintain property rights to the physical and digital representations of the works.

## **QUALITY STATEMENT**

The Arizona Geological Survey is not responsible for the accuracy of the records, information, or opinions that may be contained in the files. The Survey collects, catalogs, and archives data on mineral properties regardless of its views of the veracity or accuracy of those data.

PRINTED: 09/21/2001

ARIZONA DEPARTMENT OF MINES AND MINERAL RESOURCES AZMILS DATA

PRIMARY NAME: IDAHO

ALTERNATE NAMES:  
VANDERBILT GROUP

MOHAVE COUNTY MILS NUMBER: 88G

LOCATION: TOWNSHIP 22 N RANGE 17 W SECTION 7 QUARTER SW  
LATITUDE: N 35DEG 18MIN 17SEC LONGITUDE: W 114DEG 08MIN 10SEC  
TOPO MAP NAME: CERBAT - 7.5 MIN

CURRENT STATUS: PAST PRODUCER

COMMODITY:  
GOLD LODE  
ZINC SULFIDE  
SILVER SULFIDE  
LEAD SULFIDE  
COPPER SULFIDE  
IRON SULFIDE

BIBLIOGRAPHY:  
ADMMR IDAHO MINE FILE  
ADMMR MOHAVE CUSTOM MILL PROJECT  
HAURY, P.S. "ZINC-LEAD MNS IN WALLAPAI MNG DI  
ST, MOH. CTY, AZ" USBM RI 4101, P. 39-40  
SCHRADER, F.C. "MIN. DPSTS OF CRBT RNGE, BLCK  
MTNS, GRND WSH CLFS,AZ" USGS BULL 340, P 67  
WILSON, E.D. "AZ LODE GOLD MINES" AZBM BULL  
137, P. 113; 1967  
SCHRADER, F.C. "MIN. DPSTS OF CRBT RNGE, BLCK  
MTNS, GRND WSH CLFS,AZ" USGS BULL 397, P 95  
ELSING, M.J. "AZ METAL PRODUCTION" AZBM BULL  
140, P. 98; 1936  
MALACH, R. "MOHAVE CTY MINES" P. 23; 1977  
DINGS, M.G. "WALLAPAI MNG DIST, CRBT MTN, AZ"  
USGS BULL 978-E, P. 147; 1951

04, 17/87

ARIZONA DEPARTMENT OF MINES AND MINERAL RESOURCES FILE DATA

PRIMARY NAME: IDAHO

ALTERNATE NAMES:  
VANDERBILT GROUP

MOHAVE COUNTY MILS NUMBER: 88G

LOCATION: TOWNSHIP 22 N RANGE 17 W SECTION 7 QUARTER SW  
LATITUDE: N 35DEG 18MIN 17SEC LONGITUDE: W 114DEG 08MIN 10SEC  
TOPO MAP NAME: CERBAT - 7.5 MIN

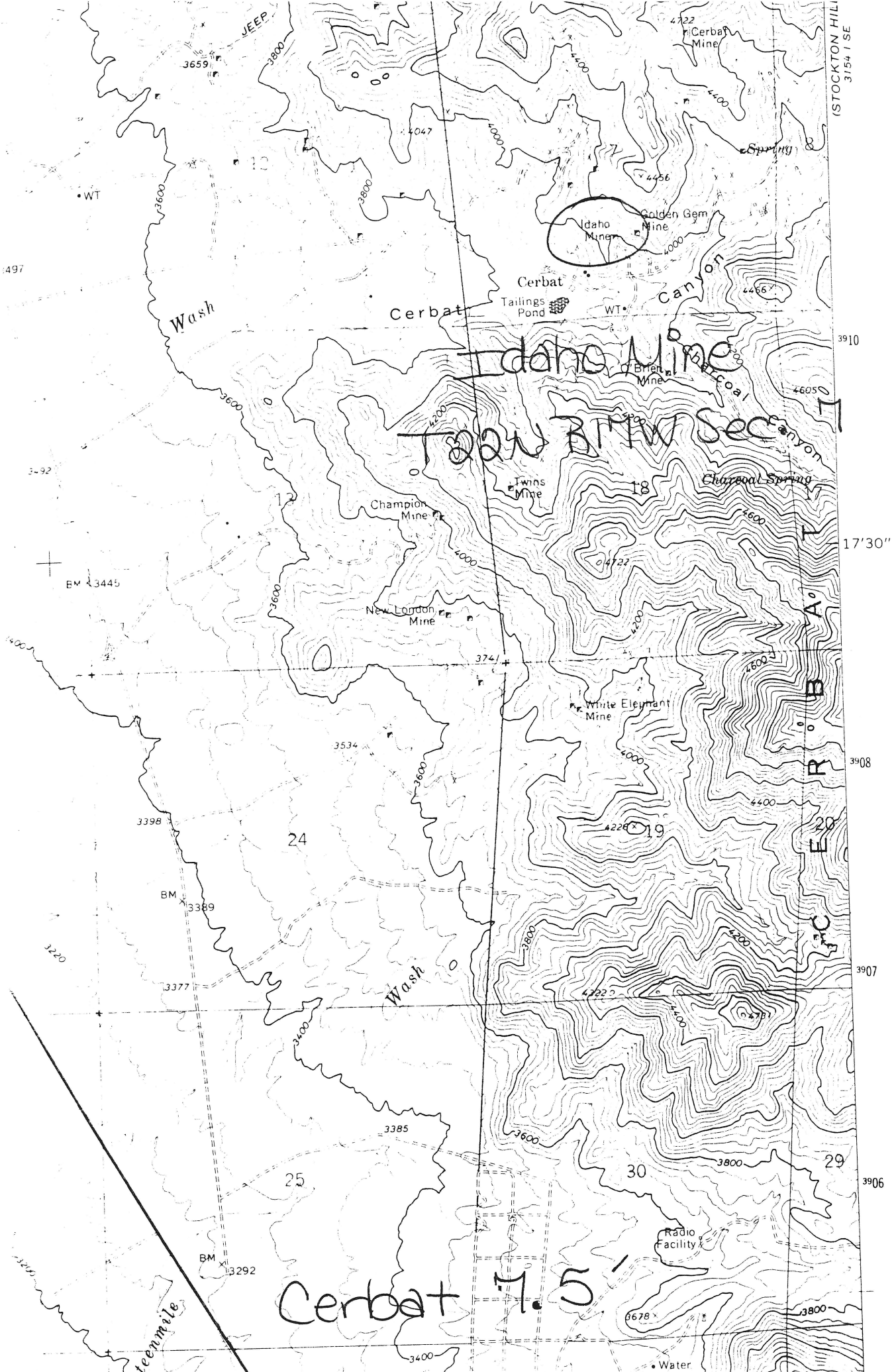
CURRENT STATUS: PAST PRODUCER

COMMODITY:

GOLD	LODE
ZINC	SULFIDE
SILVER	SULFIDE
LEAD	SULFIDE
COPPER	SULFIDE
IRON	SULFIDE

BIBLIOGRAPHY:

ADMMR IDAHO MINE FILE  
ADMMR MOHAVE CUSTOM MILL PROJECT  
HAURY, P.S. "ZINC-LEAD MNS IN WALLAPAI MNG DI  
ST, MOH. CTY, AZ" USBM RI 4101, P. 39-40  
SCHRADER, F.C. "MIN. DPSTS OF CRBT RNGE, BLCK  
MTNS, GRND WSH CLFS, AZ" USGS BULL 340, P 67  
WILSON, E.D. "AZ LODE GOLD MINES" AZBM BULL  
137, P. 113; 1967  
SCHRADER, F.C. "MIN. DPSTS OF CRBT RNGE, BLCK  
MTNS, GRND WSH CLFS, AZ" USGS BULL 397, P 95  
ELSING, M.J. "AZ METAL PRODUCTION" AZBM BULL  
140, P. 98; 1936  
MALACH, R. "MOHAVE CTY MINES" P. 23; 1977  
DINGS, M.G. "WALLAPAI MNG DIST, CRBT MTN, AZ"  
USGS BULL 978-E, P. 147; 1951



STOCKTON HILL  
3154 I SE

SW

17'30"

3908

3907

3906



May 27, 1957

IDAHO MINE

MOHAVE COUNTY  
WALLAPAI DIST.

11 mi by Rd 3 of Clarice  
on S. side of Carter Wash (RT 4101)  
739

This property idle.

MARK GEMMILL

R/H

NAME: ~~IDAHO~~ (B) ~~Tom Reed dr.~~

COUNTY: MOHAVE

11 mi (by Road) south of Chloride on N. side of Cerbat Wash

T22N R 17 W SEC. 7 Elev 4000  
S. central

DISTRICT:

WALLAPAI  
(CERBAT)

Mineralization: Au, Ag, Pb, Cu, Zn

Geology:

Type Operation: 110' deep

Production: 200,000

References: USGS 372 295 USGS 340 p. 67 USBM RI 4101

Min. Mun & Pros. file Index Map (# 354)

Mohave Cty. Card File

IDAHO MINE, WALLAPAI M.DIST, MOHAVE COUNTY

For Information See: REPORT ON THE "CERBAT TRANSPORTATION DEVELOPMENT & DRAINAGE TUNNEL"

&

REPORT ON THE "NELSON TRANSPORTATION TUNNEL"

in "Geology Reports" File.

ALSO

SEE: U. S. Bureau of Mines "Report of Investigations, (R.I.) 4101, August 1947" (page 39)  
U. S. B. S. Bulletin 397, page 95.  
ARIZ. B. M. BULLETIN 137, page 113

LARSON, Walter S.  
Box 455  
Kingman, Arizona

IDAHO  
9-29-43

See IDAHO - mine loan application.  
See L file - re request for bulletin.

IDAHO

Pb, Zn, Au

Mohave

8 -

Walter S. Larson, Box 455, Kingman

'43

(Moved, left no address. 8/1/46)

Mine	IDAHO	Zn., Pb. <i>and gold</i>	Date	September 29, 1943
District	Wallapai		Engineer	Earl F. Hastings
Subject:	Reconstruction Finance Corporation ✓ Mine Loan			

Phx C-248  
September 28, 1943  
September 29, 1943

- Material mined and shipped by the last operators from the 100 foot level consisted of a selected band of heavy sulphide mineral averaging 12" to 14" in width. The vein varied from 2.5 to 4.0 feet with a network of seams and a few defined bands existing from wall to wall in addition to the main band. It was considered that the entire vein width, exclusive of local lean areas which could be left as pillars, would be of a milling grade of ore if produced in moderate consistent tonnage and free of excessive hauling barges.

September 29, 1943

(C) The dump volume does not indicate the extent of development claimed, although the dump is so situated that much of it could have been washed away by flash floods. That the shaft is fully 240 feet deep is somewhat doubtful, although it cannot be stated how far short it falls of that depth.

(D) The general area is well mineralized and R.F.C. loans have been granted on the Columbus, Gem and O'Brien properties in close proximity and on the same system of veins.

(E) As an individual and independent operation the Idaho offers a small production by careful selective mining.

Should milling facilities be made available (as is possible through the correspondent's current negotiations with the owners of the Keystone mill) prospective production both immediate and following extensive lateral development is greatly enhanced.

The Gem and Idaho mines can be relatively easily connected when normal drifting to the NW has been accomplished on the latter, should such be desirable at that time.

(F) In view of the correspondent's access to equipment and tools for the rehabilitation of the property, and considering the project in its association with other prospective milling ore producers, this loan can be recommended.

ARIZONA DEPARTMENT OF MINERAL RESOURCES

Earl F. Hastings, Projects Engineer



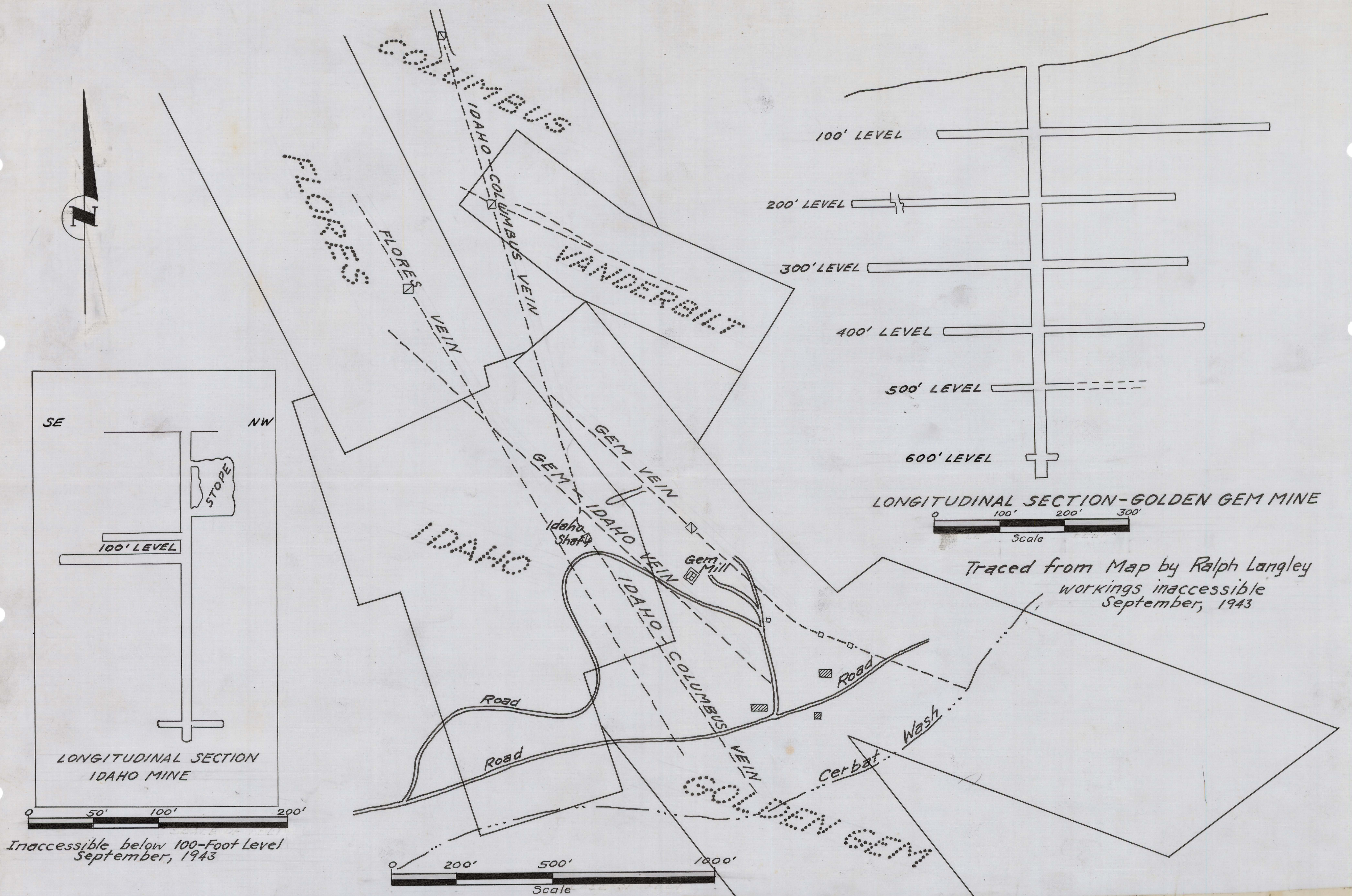


FIG. 16-CLAIM MAP AND LONGITUDINAL SECTIONS, IDAHO & GOLDEN GEM MINES, MOHAVE CO., ARIZONA