



CONTACT INFORMATION

Mining Records Curator
Arizona Geological Survey
1520 West Adams St.
Phoenix, AZ 85007
602-771-1601
<http://www.azgs.az.gov>
inquiries@azgs.az.gov

The following file is part of the

Arizona Department of Mines and Mineral Resources Mining Collection

ACCESS STATEMENT

These digitized collections are accessible for purposes of education and research. We have indicated what we know about copyright and rights of privacy, publicity, or trademark. Due to the nature of archival collections, we are not always able to identify this information. We are eager to hear from any rights owners, so that we may obtain accurate information. Upon request, we will remove material from public view while we address a rights issue.

CONSTRAINTS STATEMENT

The Arizona Geological Survey does not claim to control all rights for all materials in its collection. These rights include, but are not limited to: copyright, privacy rights, and cultural protection rights. The User hereby assumes all responsibility for obtaining any rights to use the material in excess of "fair use."

The Survey makes no intellectual property claims to the products created by individual authors in the manuscript collections, except when the author deeded those rights to the Survey or when those authors were employed by the State of Arizona and created intellectual products as a function of their official duties. The Survey does maintain property rights to the physical and digital representations of the works.

QUALITY STATEMENT

The Arizona Geological Survey is not responsible for the accuracy of the records, information, or opinions that may be contained in the files. The Survey collects, catalogs, and archives data on mineral properties regardless of its views of the veracity or accuracy of those data.

PRINTED: 09/21/2001

ARIZONA DEPARTMENT OF MINES AND MINERAL RESOURCES AZMILS DATA

PRIMARY NAME: HOUSE TANK CINDER PIT

ALTERNATE NAMES:

COCONINO COUNTY MILS NUMBER: 124

LOCATION: TOWNSHIP 25 N RANGE 5 E SECTION 7 QUARTER S2

LATITUDE: N 35DEG 33MIN 33SEC LONGITUDE: W 111DEG 54MIN 08SEC

TOPO MAP NAME: EBERT MTN - 15 MIN

CURRENT STATUS: OTHER

COMMODITY:

PUMICE CINDERS

BIBLIOGRAPHY:

ADMMR HOUSE TANK CINDER PIT FILE

04/12/88

ARIZONA DEPARTMENT OF MINES AND MINERAL RESOURCES FILE DATA

PRIMARY NAME: HOUSE TANK CINDER PIT

ALTERNATE NAMES:

COCONINO COUNTY MILS NUMBER: 124

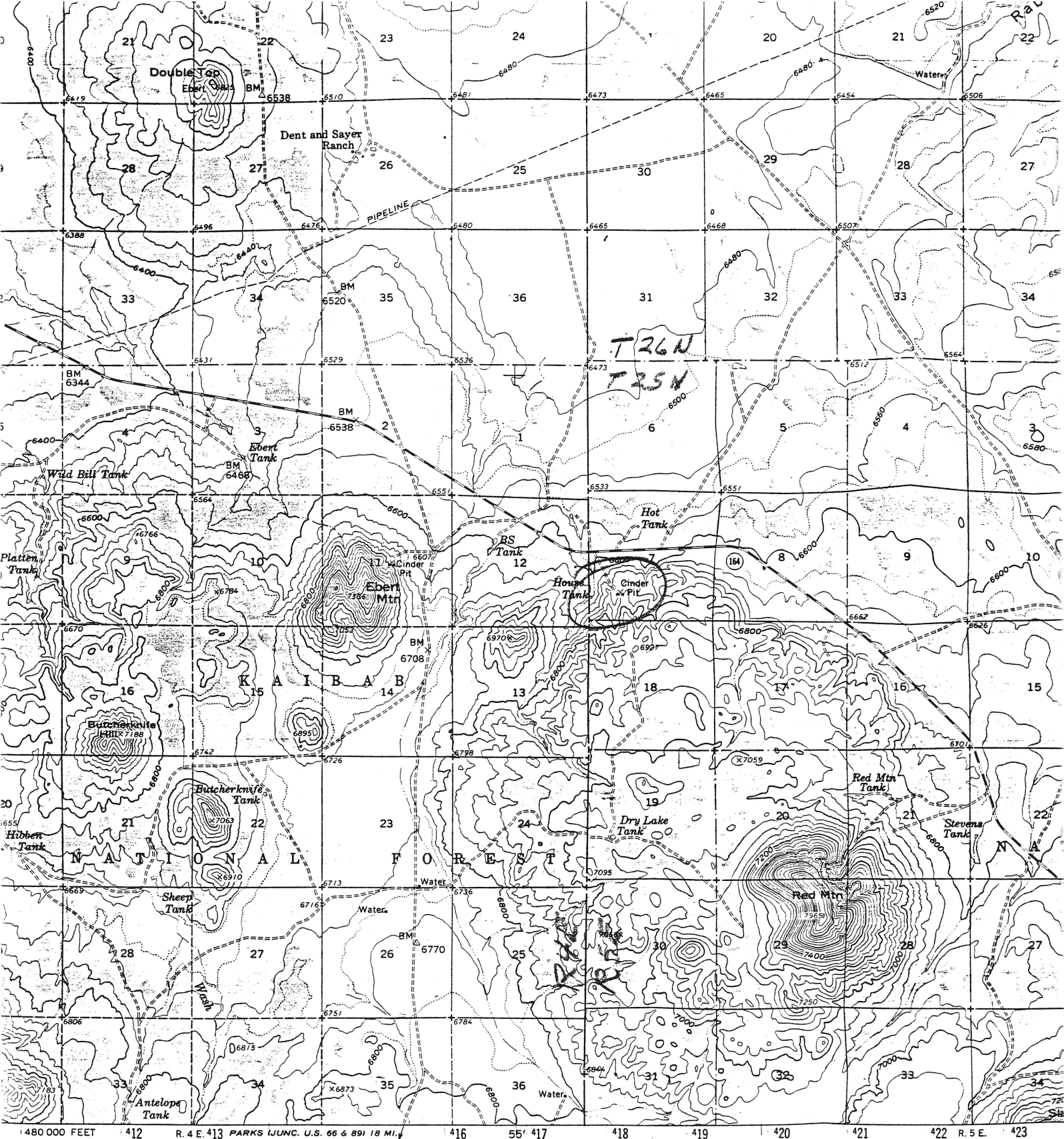
LOCATION: TOWNSHIP 25 N RANGE 5 E SECTION 7 QUARTER S2
LATITUDE: N 35DEG 33MIN 33SEC LONGITUDE: W 111DEG 54MIN 08SEC
TOPO MAP NAME: EBERT MTN - 15 MIN

CURRENT STATUS: OTHER

COMMODITY:

PUMICE CINDERS

BIBLIOGRAPHY:



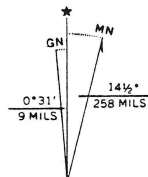
and published by the Geological Survey
by the Arizona Interstate Stream Commission
and USC&GS

erial photographs by photogrammetric methods
taken 1958. Field check 1960

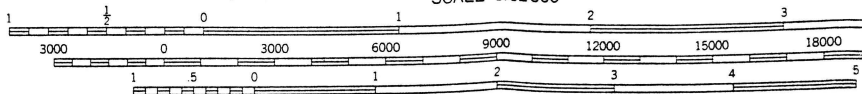
1. 1927 North American datum
sed on Arizona coordinate system, central zone
al Transverse Mercator grid ticks,
blue

ndicate approximate locations

(MORITZ RIDGE 1:24 000)
3654 IV NW



UTM GRID AND 1960 MAGNETIC NORTH
DECLINATION AT CENTER OF SHEET



SCALE 1:62500
CONTOUR INTERVAL 40 FEET
DOTTED LINES REPRESENT 20-FOOT CONTOURS
DATUM IS MEAN SEA LEVEL

THIS MAP COMPLIES WITH NATIONAL MAP ACCURACY STANDARDS
FOR SALE BY U. S. GEOLOGICAL SURVEY, DENVER, COLORADO 80225 OR WASHINGTON, D. C.
A FOLDER DESCRIBING TOPOGRAPHIC MAPS AND SYMBOLS IS AVAILABLE ON REQUEST

HOUSE TANK CINDER PIT

COCONINO COUNTY

RRB WR 2/19/88: Visited Rex Silver Mines, House Tank Cinder Pit property northwest of Flagstaff. Rex Silver Mines is purported to be planning to recover precious metals from volcanic cinders at the site of past production of cinders for aggregate, road uses and landscape uses in SW Sec 7, T25N R5E. Could find no sign of any pilot plant or any equipment or activity.
