



CONTACT INFORMATION

Mining Records Curator
Arizona Geological Survey
1520 West Adams St.
Phoenix, AZ 85007
602-771-1601
<http://www.azgs.az.gov>
inquiries@azgs.az.gov

The following file is part of the

Arizona Department of Mines and Mineral Resources Mining Collection

ACCESS STATEMENT

These digitized collections are accessible for purposes of education and research. We have indicated what we know about copyright and rights of privacy, publicity, or trademark. Due to the nature of archival collections, we are not always able to identify this information. We are eager to hear from any rights owners, so that we may obtain accurate information. Upon request, we will remove material from public view while we address a rights issue.

CONSTRAINTS STATEMENT

The Arizona Geological Survey does not claim to control all rights for all materials in its collection. These rights include, but are not limited to: copyright, privacy rights, and cultural protection rights. The User hereby assumes all responsibility for obtaining any rights to use the material in excess of "fair use."

The Survey makes no intellectual property claims to the products created by individual authors in the manuscript collections, except when the author deeded those rights to the Survey or when those authors were employed by the State of Arizona and created intellectual products as a function of their official duties. The Survey does maintain property rights to the physical and digital representations of the works.

QUALITY STATEMENT

The Arizona Geological Survey is not responsible for the accuracy of the records, information, or opinions that may be contained in the files. The Survey collects, catalogs, and archives data on mineral properties regardless of its views of the veracity or accuracy of those data.

PRINTED: 09/20/2001

ARIZONA DEPARTMENT OF MINES AND MINERAL RESOURCES AZMILS DATA

PRIMARY NAME: HOPKINS CLAIM

ALTERNATE NAMES:

MOHAVE COUNTY MILS NUMBER: 466A

LOCATION: TOWNSHIP 16 N RANGE 14 W SECTION 17 QUARTER C
LATITUDE: N 34DEG 43MIN 39SEC LONGITUDE: W 113DEG 44MIN 46SEC
TOPO MAP NAME: WIKIEUP NW - 7.5 MIN

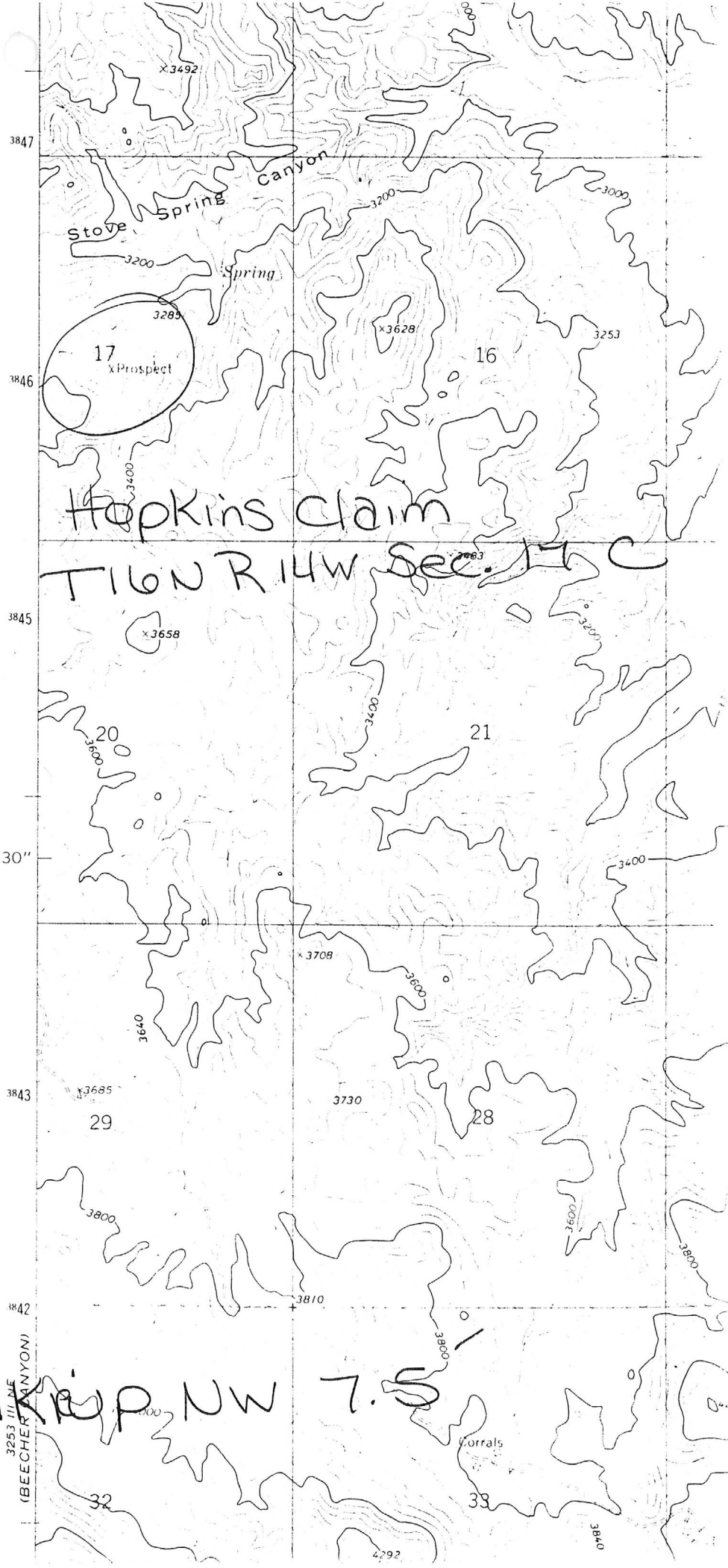
CURRENT STATUS: EXP PROSPECT

COMMODITY:

FLUORINE FLUORSPAR
BARIUM BARITE

BIBLIOGRAPHY:

ADMMR HOPKINS CLAIM FILE



Hopkins claim

T16N R14W Sec. 17C

W1/4 NW 7.5

3253 T16N
(BEECHER CANYON)

3847

3846

3845

42'30"

3843

3842

x3492

3285

17
xProspect

x3628

16

3253

x3658

20

21

x3708

3640

29

3730

28

3800

3810

3800

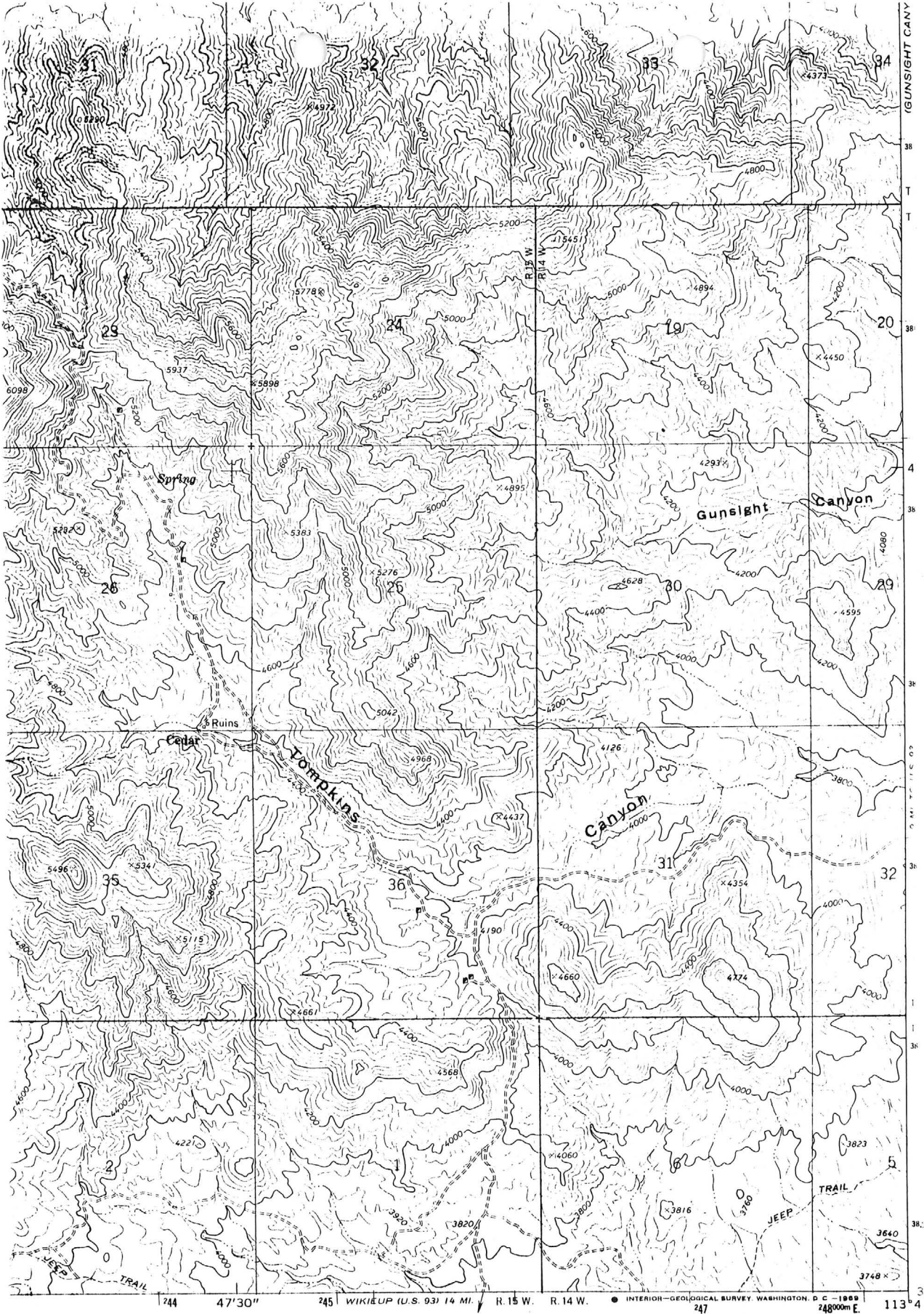
32

33

Corrals

4292

3840

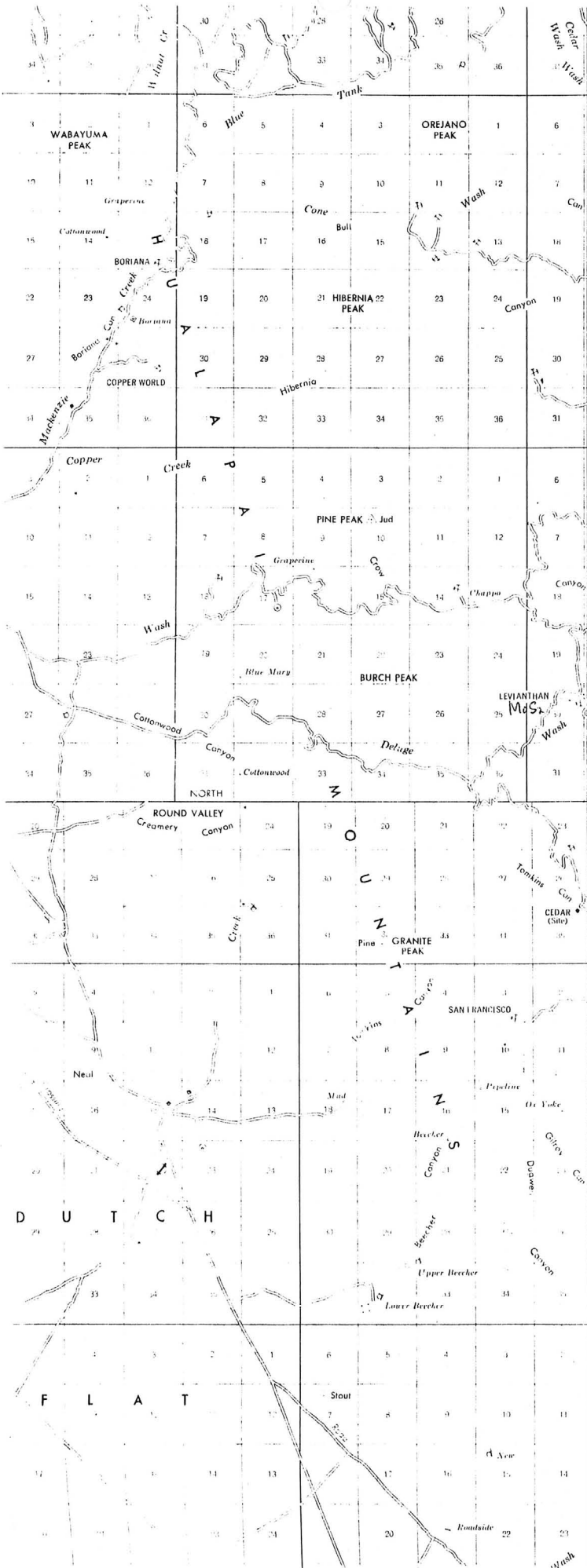


ROAD CLASSIFICATION
Unimproved dirt = - - - - -

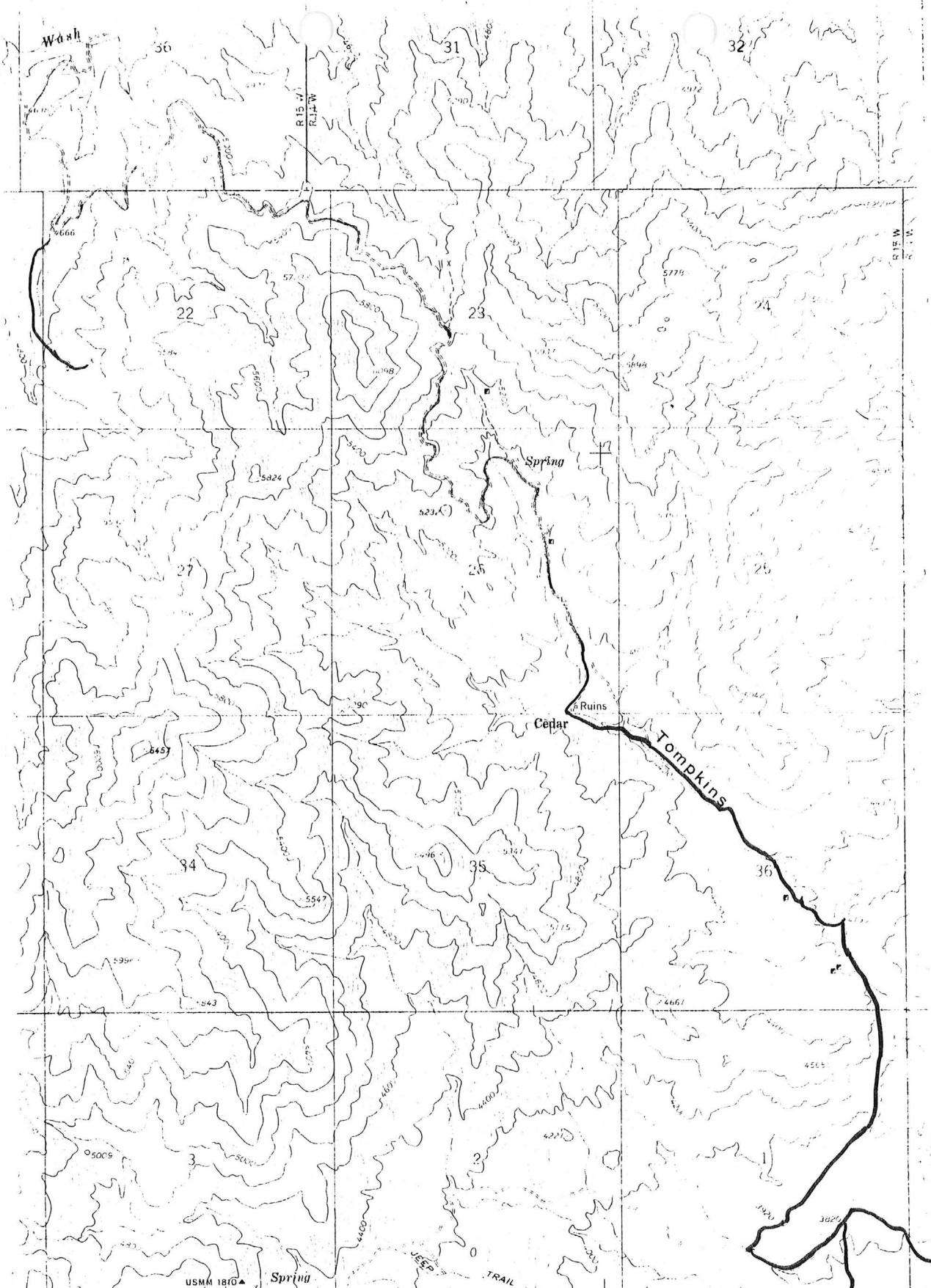


DIAMOND JOE PEAK, ARIZ.

244 47'30" 245 WIKIEUP (U.S. 93) 14 MI. R. 15 W. R. 14 W. INTERIOR—GEOLOGICAL SURVEY WASHINGTON, D. C.—1959 24800m E. 113° 4'



T. 19 N.
 1 440 000 FEET
 T. 18 N.
 1 420 000 FEET
 T. 17 N.
 1 400 000 FEET
 50'
 MATCH LINE TO PAGE 18
 1 380 000 FEET
 T. 16 1/2 N.
 1 360 000 FEET
 T. 16 N.
 1 340 000 FEET
 40'
 T. 15 N.
 1 320 000 FEET



USMA 1810
 742 (BEECHER CANYON)
 3253 III NE

SCALE 1:24 000



CONTOUR INTERVAL 40 FEET
 DATUM IS MEAN SEA LEVEL



QUADRANGLE LOCATION

HOPKINS CLAIM

MOHAVE

Mrs. Pearl Craig, Kingman, reported that she has received a number of offers for her barite property (possibly the Hopkins claims). Great Western Sugar in Denver will supposedly purchase the barite if she brings the property into production. KAP WR 12/29/75

MELVIN H. JONES

Mining Geologist

Box 406, Wickenburg, Az.

April 21, 1974.

~~- Box 1, Montello, Nevada 89830.~~

RECONNAISSANCE EXAMINATION OF THE HOPKINS FLUORSPAR CLAIM, CEDAR MINING DISTRICT, HUALAPAI MOUNTAIN, 20 Miles W. Wickieup, Arizona.

At the request of Mr. Howard S. Gable, Box 946, Kansas City, Mo., 64141, the writer, on April 16, 1974, made a rapid reconnaissance survey of the Hopkins claim. (the fluorspar deposit consists of 1 claim, only). This claim is about 20 miles West of Wickieup, Ariz., Mohave County. It is in the Hualapai mountains, Cedar Mining District. To get there, one goes 2 miles North from Wickieup on Hwy. 93 to a dirt road at what is known as the 'Cerrals', where one goes West into the mentioned mountain. It is understood that Mrs. Pearl Craig, Kingman, Arizona owns this claim (along with associates). In addition to Mr. Gable, the following individuals made the trip to the property: Mrs. Pearl Craig, Kingman; Mrs. Van Daily, Safford, Arizona; Mr. Actor Patten, New Jersey; Mr. Al Hack, Denver, Colorado; Mr. Jack Day, Meab, Utah; and a mining contractor whose name is not recalled.

The claim is at the side of a wash in a valley surrounded by towering granitic mountains, probably Pre-Cambrian monzonites that are altered into schists and gneisses. The fluorspar is in a large fault zone with a matrix of a clay gangue containing the fluorspar. The Fluorspar is colored green to white and some is brownish from a limonite coating. The Fluorite is probably Tertiary in origin.

Some bulldozer work has been done in scraping off surface areas on the prospect. In the mentioned matrix, a fluorspar fissure vein with a North-South strike, can be seen at intervals, for about 300 feet. Where not seen, it is possibly covered with float. This fissure vein has a width of about 6 inches and a vertical dip. Near the lower extremity of this vein (near the wash) ((Southward)), another small fluorspar vein crosses it at right angles with a strike of East-West and is poorly exposed for about 75 feet. This small vein has a width of about 18 inches (vertical dip). Near its Eastern extremity, there is a small pit that shows another small fissure vein that has a width of 6 inches at the top, but widens out to about 2 feet at the bottom of the pit. This last mentioned small vein has a North-South strike and parallels the first mentioned fissure vein.

The fluorspar discussed above is far from a commercial body of ore. The widths are too narrow to permit mining at a profit. A little encouragement is derived from the one small vein exposure that widened out with a little depth. On the other hand, small veins can also pinch out. A sample was taken, but not sent for an assay as no serious impurities were noted, and all Fluorite crystals are 48.9 % Fluorine and 51.1% Calcium.

Considering the bulldozer work that was accomplished in the past, which was relatively costly, the writer would suggest a small amount of additional exploration effort (at little cost). Suggest a portable gasoline jackhammer (and drill steel be rented, and some shallow holes be drilled along the exposures of fluorspar, and blasted with a stick or two of dynamite. This, hopefully might expose better ore possibilities.

MELVIN H JONES, Mining Geologist.