



CONTACT INFORMATION

Mining Records Curator
Arizona Geological Survey
1520 West Adams St.
Phoenix, AZ 85007
602-771-1601
<http://www.azgs.az.gov>
inquiries@azgs.az.gov

The following file is part of the

Arizona Department of Mines and Mineral Resources Mining Collection

ACCESS STATEMENT

These digitized collections are accessible for purposes of education and research. We have indicated what we know about copyright and rights of privacy, publicity, or trademark. Due to the nature of archival collections, we are not always able to identify this information. We are eager to hear from any rights owners, so that we may obtain accurate information. Upon request, we will remove material from public view while we address a rights issue.

CONSTRAINTS STATEMENT

The Arizona Geological Survey does not claim to control all rights for all materials in its collection. These rights include, but are not limited to: copyright, privacy rights, and cultural protection rights. The User hereby assumes all responsibility for obtaining any rights to use the material in excess of "fair use."

The Survey makes no intellectual property claims to the products created by individual authors in the manuscript collections, except when the author deeded those rights to the Survey or when those authors were employed by the State of Arizona and created intellectual products as a function of their official duties. The Survey does maintain property rights to the physical and digital representations of the works.

QUALITY STATEMENT

The Arizona Geological Survey is not responsible for the accuracy of the records, information, or opinions that may be contained in the files. The Survey collects, catalogs, and archives data on mineral properties regardless of its views of the veracity or accuracy of those data.

08/31/95

ARIZONA DEPARTMENT OF MINES AND MINERAL RESOURCES FILE DATA

PRIMARY NAME: HOME RUN PROPERTY

ALTERNATE NAMES:

PATENTED CLAIMS MS 1549
SUCCESS GROUP
PINE GROVE
WEBER BROS
CONTEST PROPERTY

YAVAPAI COUNTY MILS NUMBER: 1129A

LOCATION: TOWNSHIP 13 N RANGE 2 W SECTION 25 QUARTER SE
LATITUDE: N 34DEG 28MIN 08SEC LONGITUDE: W 112DEG 24MIN 30SEC
TOPO MAP NAME: GROOM CREEK - 7.5 MIN

CURRENT STATUS: PAST PRODUCER

COMMODITY:

GOLD
SILVER
LEAD
IRON

BIBLIOGRAPHY:

BLM MINING DISTRICT SHEET 227
YAVAPAI MAGAZINE JUL. 1918 P 2-16 SHARLOT
HALL MUSEUM PRESCOTT, AZ
ADMMR SUCCESS GROUP FILE
ADMMR PINE GROVE FILE
CLAIMS EXTEND INTO SEC. 30 & 31 T13N-R1W &
SEC. 36 T13N-RW2
ADMMR MAPS (UNDER MIDNIGHT TEST) ROLLED BOXES

SUCCESS GROUP

YAVAPAI COUNTY

KAP WR 5/6/88: D. W. Jaquays brought in originals of an underground and surface map for the Arizona Gold Corp property (Midnight Test Mine (file) Yavapai County dated May 19, 1938. Mr. Jaquays pointed out some blocks of ore in the upper workings which he believes are still present.

* GENERAL REFERENCES

File Success Grp file

REFERENCE 1 F1 < USBM-ARGMT FILE DATA >
 REFERENCE 2 F2 < ARGMT CLIPPINGS FILE DATA >
 REFERENCE 3 F3 < ARIZONA DEPARTMENT OF MINERAL RESOURCES FILE DATA UNDER: SUCCESS GROUP AND PINE GROVE >
 REFERENCE 4 F4 < YAVAPAI MAGAZINE, 1918, V. VI, #7, pp. 2-16 >

A12 < AA. JOHNS AND T.S. LAIRD (1918) >

F5 < BLM DISTRICT SHEET # 227 >

F6 < ARM BULL. 782, p. 33 >

F7 < USGS 60 MAP. 60 997 >

U.S. CRIB-SITE FORM

RECORD IDENTIFICATION

RECORD NUMBER B10 < > RECORD TYPE B20 < X, I, M > DEPOSIT NUMBER B40 < >
 REPORT DATE C1 < 8.1.12 > INFORMATION SOURCE B30 < 1.2 > FILE LINK IDENT. B50 < USBM-0040251138 >
 REPORTER(SUPERVISOR) G2 < LABARA, PETER > (last, first, middle initial) (DEWITT, ED) (last, first, middle initial)
 REPORTER AFFILIATION G5 < ARGMT > SITE NAME A10 < HOME RUN MINE >
 SYNONYMS A11 < SUCCESS GROUP >

LOCATION

MINING DISTRICT/AREA A30 < GROOM CREEK DISTRICT >
 COUNTY A60 < YAVAPAI > STATE A50 < AZ > COUNTRY A40 < U.S. >
 PHYSIOGRAPHIC PROV A63 < 1.2 >
 DRAINAGE AREA A62 < 1.5070103 >
 QUADRANGLE NAME A90 < GROOM CREEK > (1874) LAND STATUS A64 < 0.0 >
 SECOND QUAD NAME A92 < > QUADRANGLE SCALE A100 < 24000 >
 ELEVATION A107 < 6800 FT > SECOND QUAD SCALE A91 < >

UTM
 NORTHING A120 < 3815040 >
 EASTING A130 < 370480 >
 ZONE NUMBER A110 < 11 >

* ACCURACY

ACCURATE ACC (circle)
 ESTIMATED EST < >

GEODETIC

LATITUDE A70 < > N
 LONGITUDE A80 < > W

CADASTRAL

TOWNSHIP(S) A77 < 013N > RANGE(S) A78 < 002W >
 SECTION(S) A79 < 25 >
 SECTION FRACTION(S) A76 < E OF SE OF SE >
 MERIDIAN(S) A81 < GILA AND SALT RIVER >

POSITION FROM NEAREST PROMINENT LOCALITY A82 < 0.6 MILES NW OF SPRUCE MOUNTAIN LOOKOUT TOWER >
 LOCATION COMMENTS A83 < UTM TAKEN TO CENTER OF HOME RUN CLAIM LOCATED ON BLM DISTRICT SHEET # 227 >

COMMODITY INFORMATION

COMMODITIES PRESENT C10 <CU, MPB, V, FLA, W, B, S, P, K, L, H, F, G, J, I, D, C, A, E, T, N, R, Q, U, V, W, X, Y, Z, AA, AB, AC, AD, AE, AF, AG, AH, AI, AJ, AK, AL, AM, AN, AO, AP, AQ, AR, AS, AT, AU, AV, AW, AX, AY, AZ, BA, BB, BC, BD, BE, BF, BG, BH, BI, BJ, BK, BL, BM, BN, BO, BP, BQ, BR, BS, BT, BU, BV, BW, BX, BY, BZ, CA, CB, CC, CD, CE, CF, CG, CH, CI, CJ, CK, CL, CM, CN, CO, CP, CQ, CR, CS, CT, CU, CV, CW, CX, CY, CZ, DA, DB, DC, DD, DE, DF, DG, DH, DI, DJ, DK, DL, DM, DN, DO, DP, DQ, DR, DS, DT, DU, DV, DW, DX, DY, DZ, EA, EB, EC, ED, EE, EF, EG, EH, EI, EJ, EK, EL, EM, EN, EO, EP, EQ, ER, ES, ET, EU, EV, EW, EX, EY, EZ, FA, FB, FC, FD, FE, FF, FG, FH, FI, FJ, FK, FL, FM, FN, FO, FP, FQ, FR, FS, FT, FU, FV, FW, FX, FY, FZ, GA, GB, GC, GD, GE, GF, GG, GH, GI, GJ, GK, GL, GM, GN, GO, GP, GQ, GR, GS, GT, GU, GV, GW, GX, GY, GZ, HA, HB, HC, HD, HE, HF, HG, HH, HI, HJ, HK, HL, HM, HN, HO, HP, HQ, HR, HS, HT, HU, HV, HW, HX, HY, HZ, IA, IB, IC, ID, IE, IF, IG, IH, II, IJ, IK, IL, IM, IN, IO, IP, IQ, IR, IS, IT, IU, IV, IW, IX, IY, IZ, JA, JB, JC, JD, JE, JF, JG, JH, JI, JJ, JK, JL, JM, JN, JO, JP, JQ, JR, JS, JT, JU, JV, JW, JX, JY, JZ, KA, KB, KC, KD, KE, KF, KG, KH, KI, KJ, KK, KL, KM, KN, KO, KP, KQ, KR, KS, KT, KU, KV, KW, KX, KY, KZ, LA, LB, LC, LD, LE, LF, LG, LH, LI, LJ, LK, LL, LM, LN, LO, LP, LQ, LR, LS, LT, LU, LV, LW, LX, LY, LZ, MA, MB, MC, MD, ME, MF, MG, MH, MI, MJ, MK, ML, MM, MN, MO, MP, MQ, MR, MS, MT, MU, MV, MW, MX, MY, MZ, NA, NB, NC, ND, NE, NF, NG, NH, NI, NJ, NK, NL, NM, NN, NO, NP, NQ, NR, NS, NT, NU, NV, NW, NX, NY, NZ, OA, OB, OC, OD, OE, OF, OG, OH, OI, OJ, OK, OL, OM, ON, OO, OP, OQ, OR, OS, OT, OU, OV, OW, OX, OY, OZ, PA, PB, PC, PD, PE, PF, PG, PH, PI, PJ, PK, PL, PM, PN, PO, PP, PQ, PR, PS, PT, PU, PV, PW, PX, PY, PZ, QA, QB, QC, QD, QE, QF, QG, QH, QI, QJ, QK, QL, QM, QN, QO, QP, QQ, QR, QS, QT, QU, QV, QW, QX, QY, QZ, RA, RB, RC, RD, RE, RF, RG, RH, RI, RJ, RK, RL, RM, RN, RO, RP, RQ, RR, RS, RT, RU, RV, RW, RX, RY, RZ, SA, SB, SC, SD, SE, SF, SG, SH, SI, SJ, SK, SL, SM, SN, SO, SP, SQ, SR, SS, ST, SU, SV, SW, SX, SY, SZ, TA, TB, TC, TD, TE, TF, TG, TH, TI, TJ, TK, TL, TM, TN, TO, TP, TQ, TR, TS, TT, TU, TV, TW, TX, TY, TZ, UA, UB, UC, UD, UE, UF, UG, UH, UI, UJ, UK, UL, UM, UN, UO, UP, UQ, UR, US, UT, UV, UW, UX, UY, UZ, VA, VB, VC, VD, VE, VF, VG, VH, VI, VJ, VK, VL, VM, VN, VO, VP, VQ, VR, VS, VT, VU, VV, VW, VX, VY, VZ, WA, WB, WC, WD, WE, WF, WG, WH, WI, WJ, WK, WL, WM, WN, WO, WP, WQ, WR, WS, WT, WU, WV, WW, WX, WY, WZ, XA, XB, XC, XD, XE, XF, XG, XH, XI, XJ, XK, XL, XM, XN, XO, XP, XQ, XR, XS, XT, XU, XV, XW, XX, XY, XZ, YA, YB, YC, YD, YE, YF, YG, YH, YI, YJ, YK, YL, YM, YN, YO, YP, YQ, YR, YS, YT, YU, YV, YW, YX, YY, YZ, ZA, ZB, ZC, ZD, ZE, ZF, ZG, ZH, ZI, ZJ, ZK, ZL, ZM, ZN, ZO, ZP, ZQ, ZR, ZS, ZT, ZU, ZV, ZW, ZX, ZY, ZZ, AA, AB, AC, AD, AE, AF, AG, AH, AI, AJ, AK, AL, AM, AN, AO, AP, AQ, AR, AS, AT, AU, AV, AW, AX, AY, AZ, BA, BB, BC, BD, BE, BF, BG, BH, BI, BJ, BK, BL, BM, BN, BO, BP, BQ, BR, BS, BT, BU, BV, BW, BX, BY, BZ, CA, CB, CC, CD, CE, CF, CG, CH, CI, CJ, CK, CL, CM, CN, CO, CP, CQ, CR, CS, CT, CU, CV, CW, CX, CY, CZ, DA, DB, DC, DD, DE, DF, DG, DH, DI, DJ, DK, DL, DM, DN, DO, DP, DQ, DR, DS, DT, DU, DV, DW, DX, DY, DZ, EA, EB, EC, ED, EE, EF, EG, EH, EI, EJ, EK, EL, EM, EN, EO, EP, EQ, ER, ES, ET, EU, EV, EW, EX, EY, EZ, FA, FB, FC, FD, FE, FF, FG, FH, FI, FJ, FK, FL, FM, FN, FO, FP, FQ, FR, FS, FT, FU, FV, FW, FX, FY, FZ, GA, GB, GC, GD, GE, GF, GG, GH, GI, GJ, GK, GL, GM, GN, GO, GP, GQ, GR, GS, GT, GU, GV, GW, GX, GY, GZ, HA, HB, HC, HD, HE, HF, HG, HH, HI, HJ, HK, HL, HM, HN, HO, HP, HQ, HR, HS, HT, HU, HV, HW, HX, HY, HZ, IA, IB, IC, ID, IE, IF, IG, IH, II, IJ, IK, IL, IM, IN, IO, IP, IQ, IR, IS, IT, IU, IV, IW, IX, IY, IZ, JA, JB, JC, JD, JE, JF, JG, JH, JI, JJ, JK, JL, JM, JN, JO, JP, JQ, JR, JS, JT, JU, JV, JW, JX, JY, JZ, KA, KB, KC, KD, KE, KF, KG, KH, KI, KJ, KK, KL, KM, KN, KO, KP, KQ, KR, KS, KT, KU, KV, KW, KX, KY, KZ, LA, LB, LC, LD, LE, LF, LG, LH, LI, LJ, LK, LL, LM, LN, LO, LP, LQ, LR, LS, LT, LU, LV, LW, LX, LY, LZ, MA, MB, MC, MD, ME, MF, MG, MH, MI, MJ, MK, ML, MM, MN, MO, MP, MQ, MR, MS, MT, MU, MV, MW, MX, MY, MZ, NA, NB, NC, ND, NE, NF, NG, NH, NI, NJ, NK, NL, NM, NN, NO, NP, NQ, NR, NS, NT, NU, NV, NW, NX, NY, NZ, OA, OB, OC, OD, OE, OF, OG, OH, OI, OJ, OK, OL, OM, ON, OO, OP, OQ, OR, OS, OT, OU, OV, OW, OX, OY, OZ, PA, PB, PC, PD, PE, PF, PG, PH, PI, PJ, PK, PL, PM, PN, PO, PP, PQ, PR, PS, PT, PU, PV, PW, PX, PY, PZ, QA, QB, QC, QD, QE, QF, QG, QH, QI, QJ, QK, QL, QM, QN, QO, QP, QQ, QR, QS, QT, QU, QV, QW, QX, QY, QZ, RA, RB, RC, RD, RE, RF, RG, RH, RI, RJ, RK, RL, RM, RN, RO, RP, RQ, RR, RS, RT, RU, RV, RW, RX, RY, RZ, SA, SB, SC, SD, SE, SF, SG, SH, SI, SJ, SK, SL, SM, SN, SO, SP, SQ, SR, SS, ST, SU, SV, SW, SX, SY, SZ, TA, TB, TC, TD, TE, TF, TG, TH, TI, TJ, TK, TL, TM, TN, TO, TP, TQ, TR, TS, TT, TU, TV, TW, TX, TY, TZ, UA, UB, UC, UD, UE, UF, UG, UH, UI, UJ, UK, UL, UM, UN, UO, UP, UQ, UR, US, UT, UV, UW, UX, UY, UZ, VA, VB, VC, VD, VE, VF, VG, VH, VI, VJ, VK, VL, VM, VN, VO, VP, VQ, VR, VS, VT, VU, VV, VW, VX, VY, VZ, WA, WB, WC, WD, WE, WF, WG, WH, WI, WJ, WK, WL, WM, WN, WO, WP, WQ, WR, WS, WT, WU, WV, WW, WX, WY, WZ, XA, XB, XC, XD, XE, XF, XG, XH, XI, XJ, XK, XL, XM, XN, XO, XP, XQ, XR, XS, XT, XU, XV, XW, XX, XY, XZ, YA, YB, YC, YD, YE, YF, YG, YH, YI, YJ, YK, YL, YM, YN, YO, YP, YQ, YR, YS, YT, YU, YV, YW, YX, YY, YZ, ZA, ZB, ZC, ZD, ZE, ZF, ZG, ZH, ZI, ZJ, ZK, ZL, ZM, ZN, ZO, ZP, ZQ, ZR, ZS, ZT, ZU, ZV, ZW, ZX, ZY, ZZ

* SIGNIFICANCE

MAJOR PRODUCTS MAJOR <Au, V, Cu, W, B, S, P, K, L, H, F, G, J, I, D, C, A, E, T, N, R, Q, U, V, W, X, Y, Z, AA, AB, AC, AD, AE, AF, AG, AH, AI, AJ, AK, AL, AM, AN, AO, AP, AQ, AR, AS, AT, AU, AV, AW, AX, AY, AZ, BA, BB, BC, BD, BE, BF, BG, BH, BI, BJ, BK, BL, BM, BN, BO, BP, BQ, BR, BS, BT, BU, BV, BW, BX, BY, BZ, CA, CB, CC, CD, CE, CF, CG, CH, CI, CJ, CK, CL, CM, CN, CO, CP, CQ, CR, CS, CT, CU, CV, CW, CX, CY, CZ, DA, DB, DC, DD, DE, DF, DG, DH, DI, DJ, DK, DL, DM, DN, DO, DP, DQ, DR, DS, DT, DU, DV, DW, DX, DY, DZ, EA, EB, EC, ED, EE, EF, EG, EH, EI, EJ, EK, EL, EM, EN, EO, EP, EQ, ER, ES, ET, EU, EV, EW, EX, EY, EZ, FA, FB, FC, FD, FE, FF, FG, FH, FI, FJ, FK, FL, FM, FN, FO, FP, FQ, FR, FS, FT, FU, FV, FW, FX, FY, FZ, GA, GB, GC, GD, GE, GF, GG, GH, GI, GJ, GK, GL, GM, GN, GO, GP, GQ, GR, GS, GT, GU, GV, GW, GX, GY, GZ, HA, HB, HC, HD, HE, HF, HG, HH, HI, HJ, HK, HL, HM, HN, HO, HP, HQ, HR, HS, HT, HU, HV, HW, HX, HY, HZ, IA, IB, IC, ID, IE, IF, IG, IH, II, IJ, IK, IL, IM, IN, IO, IP, IQ, IR, IS, IT, IU, IV, IW, IX, IY, IZ, JA, JB, JC, JD, JE, JF, JG, JH, JI, JJ, JK, JL, JM, JN, JO, JP, JQ, JR, JS, JT, JU, JV, JW, JX, JY, JZ, KA, KB, KC, KD, KE, KF, KG, KH, KI, KJ, KK, KL, KM, KN, KO, KP, KQ, KR, KS, KT, KU, KV, KW, KX, KY, KZ, LA, LB, LC, LD, LE, LF, LG, LH, LI, LJ, LK, LL, LM, LN, LO, LP, LQ, LR, LS, LT, LU, LV, LW, LX, LY, LZ, MA, MB, MC, MD, ME, MF, MG, MH, MI, MJ, MK, ML, MM, MN, MO, MP, MQ, MR, MS, MT, MU, MV, MW, MX, MY, MZ, NA, NB, NC, ND, NE, NF, NG, NH, NI, NJ, NK, NL, NM, NN, NO, NP, NQ, NR, NS, NT, NU, NV, NW, NX, NY, NZ, OA, OB, OC, OD, OE, OF, OG, OH, OI, OJ, OK, OL, OM, ON, OO, OP, OQ, OR, OS, OT, OU, OV, OW, OX, OY, OZ, PA, PB, PC, PD, PE, PF, PG, PH, PI, PJ, PK, PL, PM, PN, PO, PP, PQ, PR, PS, PT, PU, PV, PW, PX, PY, PZ, QA, QB, QC, QD, QE, QF, QG, QH, QI, QJ, QK, QL, QM, QN, QO, QP, QQ, QR, QS, QT, QU, QV, QW, QX, QY, QZ, RA, RB, RC, RD, RE, RF, RG, RH, RI, RJ, RK, RL, RM, RN, RO, RP, RQ, RR, RS, RT, RU, RV, RW, RX, RY, RZ, SA, SB, SC, SD, SE, SF, SG, SH, SI, SJ, SK, SL, SM, SN, SO, SP, SQ, SR, SS, ST, SU, SV, SW, SX, SY, SZ, TA, TB, TC, TD, TE, TF, TG, TH, TI, TJ, TK, TL, TM, TN, TO, TP, TQ, TR, TS, TT, TU, TV, TW, TX, TY, TZ, UA, UB, UC, UD, UE, UF, UG, UH, UI, UJ, UK, UL, UM, UN, UO, UP, UQ, UR, US, UT, UV, UW, UX, UY, UZ, VA, VB, VC, VD, VE, VF, VG, VH, VI, VJ, VK, VL, VM, VN, VO, VP, VQ, VR, VS, VT, VU, VV, VW, VX, VY, VZ, WA, WB, WC, WD, WE, WF, WG, WH, WI, WJ, WK, WL, WM, WN, WO, WP, WQ, WR, WS, WT, WU, WV, WW, WX, WY, WZ, XA, XB, XC, XD, XE, XF, XG, XH, XI, XJ, XK, XL, XM, XN, XO, XP, XQ, XR, XS, XT, XU, XV, XW, XX, XY, XZ, YA, YB, YC, YD, YE, YF, YG, YH, YI, YJ, YK, YL, YM, YN, YO, YP, YQ, YR, YS, YT, YU, YV, YW, YX, YY, YZ, ZA, ZB, ZC, ZD, ZE, ZF, ZG, ZH, ZI, ZJ, ZK, ZL, ZM, ZN, ZO, ZP, ZQ, ZR, ZS, ZT, ZU, ZV, ZW, ZX, ZY, ZZ

* PRODUCTION

PRODUCTION YES (circle one) PRODUCTION SIZE MED MED LGE (circle one) NON-PRODUCER PRODUCTION UND NO (circle one)

* STATUS

EXPLORATION OR DEVELOPMENT

STATUS AND ACTIVITY A20 <H>

DISCOVERER L20 <>
 YEAR OF DISCOVERY L10 <> NATURE OF DISCOVERY L30 YEAR OF FIRST PRODUCTION L40 <1903> YEAR OF LAST PRODUCTION L45 <1940>
 PRESENT/LAST OWNER A12 <WILLIAM GEISE AND GEORGE SCHOLEY (1932); WEBER BROTHERS (1939)>
 PRESENT/LAST OPERATOR A13 <WILLIAM GEISE AND GEORGE SCHOLEY (1932); WEBER BROTHERS (1939)>
 EXPL./DEV. COMMENTS L110 <THE SUCCESS GROUP LIST OF CLAIMS: SUCCESS, BENJAMIN FRANKLIN, WARSAW, AND WARDNER>

DESCRIPTION OF DEPOSIT

DEPOSIT TYPE(S) C40 <VEIN>
 DEPOSIT FORM/SHAPE M10 <TABULAR>
 DEPTH TO TOP M20 <> UNITS M21 <> MAXIMUM LENGTH M40 <> UNITS M41 <>
 DEPTH TO BOTTOM M30 <> UNITS M31 <> MAXIMUM WIDTH M50 <> UNITS M51 <>
 DEPOSIT SIZE M15 <SMALL> M15 <MEDIUM> M15 <LARGE> (circle one) MAXIMUM THICKNESS M60 <2.5> UNITS M61 <FT>
 STRIKE M70 <NORTHEASTERLY> DIP M80 <>
 DIRECTION OF PLUNGE M100 <> PLUNGE M90 <>
 DEP. DESC. COMMENTS M110 <2 VEINS ON PROPERTY. ORE CARVES 250 TO 300 FT LONG>

DESCRIPTION OF WORKINGS

Workings are: SURFACE M120 UNDERGROUND M130 BOTH M140 (circle one) OVERALL LENGTH M190 <900> UNITS M191 <FT>
 DEPTH BELOW SURFACE M160 <460> UNITS M161 <FT> OVERALL WIDTH M200 <> UNITS M201 <>
 LENGTH OF WORKINGS M170 <2500> UNITS M171 <FT> OVERALL AREA M210 <> UNITS M211 <>
 DESC. OF WORK. COM. M220 <MAIN SHAFT 460 FEET IN DEPTH, 4 LEVELS, NO. 1 - 800 FEET, NO. 2 - 700 FEET, NO. 3 - 400 FEET, NO. 4 - 100 FEET LONG>

GEOLOGY

AGE OF HOST ROCK(S) K1 <P.R.O.T.; L.C.R.E.T.V. 4/5B ZIRCON GREATER THAN 760 MILLION YEARS; UNDATED, PROBABLY PALEO-MIOCENE>
 HOST ROCK TYPE(S) K1A <SLATE, METABASALT, AMPHIBOLITE> RHYOLITE PORPHYRY
 AGE OF IGNEOUS ROCK(S) K2 <P.R.O.T.; L.C.R.E.T.V. AS LINE K1> RHYOLITE PORPHYRY
 IGNEOUS ROCK TYPE(S) K2A <BASALT, DIORITE>
 AGE OF MINERALIZATION K3 <L.C.R.E.T.V. UNDATED, PROBABLY LATE CRETACEOUS-PALEOCENE. POSSIBLY PRECAMBRIAN>
 PERT. MINERALS (NOT ORE) K4 <QUARTZ, PYRITE>
 ORE CONTROL/LOCUS K5 <FAULTING, IGNEOUS ACTIVITY, ESPECIALLY DIKE EMPLACEMENT>
 MAJ. REG. TRENDS/STRUCT. N5 <FOLIATION IN PRECAMBRIAN ROCKS TRENDS N10E TO N20E>
 TECTONIC SETTING N15 <>
 SIGNIFICANT LOCAL STRUCT. N70 <VEINS PARALLEL FOLIATION AND CROSSCUT IT BY 10-20 DEGREES, TRENDING N20E TO N-S>
 SIGNIFICANT ALTERATION N75 <MINOR>
 PROCESS OF CONC./ENRICH. N80 <OXIDATION AT NEAR SURFACE>
 FORMATION AGE N30 <P.R.O.T. 4/5B ZIRCON GREATER THAN 760 MILLION YEARS>
 FORMATION NAME N30A <GREEN GULCH VOLCANICS>
 SECOND FM AGE N35 <>
 SECOND FM NAME N35A <>
 IGNEOUS UNIT AGE N80 <P.R.O.T. UNDATED, PROBABLY GREATER THAN OR EQUAL TO 760 MILLION YEARS>
 IGNEOUS UNIT NAME N50A <UNNAMED GABBRO>
 SECOND IG. UNIT AGE N55 <L.C.R.E.T.V. UNDATED, PROBABLY 75 TO 60 MILLION YEARS>
 SECOND IG. UNIT NAME N55A <UNNAMED RHYOLITE PORPHYRY DIKES>
 GEOLOGY COMMENTS N85 <DEPOSIT IS QUARTZ VEIN WHICH CUTS PROTEROZOIC ROCKS>

GENERAL COMMENTS

GENERAL COMMENTS GEN <>

THE SUCCESS GROUP.

The Success Group of mines, formerly known as the "Home Run Group" consists of four mining claims, as follows: Success, Benjamin Franklin, Warsaw, and Wardner, aggregating an area of eighty acres.

The title to the claims is vested in the owners by the usual possessory right obtained by location of vacant and abandoned mining ground.

Sufficient work has been done and sufficient showing of mineral has been made on the group to secure United States patent to the ground should the same be deemed advisable or necessary at any time.

This group of claims is situated in the Groom Creek mining district, Yavapai county, Arizona, and is distant from Prescott, the nearest railway station and town, about seven miles in a southerly direction. It is reached from Prescott by the State Highway, this road, crossing Groom Creek one mile below the mine. This Highway has recently been built at a maximum grade of 6% and is one of the finest roads in the west.

The Midnight Test group of mines joins this property on the north and the Nevada group joins it on the east.

The elevation of the mine is about 1200 feet higher than Prescott, and about 6500 feet above sea level.

This group being situated on the north slope of Spruce Mountain and at a good elevation, is remarkably well supplied with wood, water, and is in fact accessible to all mining supplies, and all at a very reasonable and economical price.

No fuel will be required for power purposes, as the main line of the Arizona Power Company, conveying power from Fossil Creek to Prescott and vicinity, crosses the mountain within a few hundred feet of the claims. Consequently the cost for power will be very low and the cost of mining development and also the reduction of ores will be reduced to a very low figure.

The water for camp and domestic purposes is of the best and a quantity available for all mining purposes.

Wood for domestic purposes and timber for mining use can be readily and cheaply obtained in the immediate vicinity.

Large quantities of mining supplies of all kinds are kept in stock in the city of Prescott, and can be promptly had at the usual prices. Prescott is connected with Groom Creek District by telephone lines.

The railroad rates both east and west are considerably lower than formerly and the cost of mining to the operator has been greatly reduced.

The principal work done on the property consists of a main shaft 460 feet in depth. This shaft is nearly vertical and from it four main levels are extended as follows:

Level No. 1, length 800 feet,	Level No. 2 length 700 feet
Level No. 3, length 900 feet	Level No. 4, length 100 feet.

There are also several shallow shafts, pits, prospecting drifts and crosscuts etc, all aggregating a large amount of development and prospecting.

The tracks for haulage are all in place in the mine, also rails in the shaft and steam and water lines also.

All of the above work is of direct benefit to the property and was accomplished at considerable expenditure.

There are two strong veins on the property traceable for considerable length, the outcrop in places being very strong.

The following quotation from a statement made by the last Mine Foreman concerning the underground workings, gives a very clear and concise idea of it's present condition:

"When I was running the mine I kept the mill running from a chute of ore north of the shaft, the chute being about 250 to 300 feet long on each of the first three levels. I did not stop any south of the shaft or from the 400 ft level. There is about 100 feet of drifting on the 400, there was three foot of ore in the breast of the drift, north, from which I got an assay, in fact several assays of \$15 to \$20 per ton. There was 10 inches of ore in the south drift on the 400 from which I got an assay of \$65. There was from three to four feet of ore in the bottom of the 300 ft level and it appeared to be getting bigger as it went down. I believe there is a large body of ore on the 400. The drift is in only 75 feet north from the shaft and the ore was beginning to open up. By extending the drift I believe it will open up to four or five feet of ore. In the bottom of the drift on the 300 there was places where the ore was $4\frac{1}{2}$ feet in width and looked as if it was growing bigger. About 450 feet north on the 300 I opened up a short shoot of ore that was about 30 ft long. I stoped this for about 25 ft up and it pinched small at that distance, but the vein was five feet wide in the bottom of the level pitching north, and if the drifts on all the levels was extended north the same ore will be found as in the Midnight Test. The vein south of the shaft is a big, strong vein. The skip rails were left in the shaft and the 3-in water pipe and the steam pipe and all the rails in the levels were left in."

(Signed) W.C. Lipsett, E-foreman, Home Run Mine.

The foregoing statement is corroborated in all particulars by the miners who last worked in the mine.

It is somewhat difficult to give a correct idea of the tonnage at present available in the mine or it's accurate value. But no stoping has been done below the 300 ft level and there is no question but that a large and valuable vein is exposed below that level. The average value of the ore in the upper levels that is the amount recovered in the old mill was \$15.00 per ton. The value in all the levels is almost entirely gold values. Over \$50,000.00 was taken out in the mill from the ore stoped as shown in the map.

With very little work and simply by extending the lower levels considerable ground can be opened at slight expense.

The accompanying map clearly shows the general condition of the property and is correct.

Groom Cr. Drift.
Yavapai County
(Success Ground)
HOME RUN GROUP

PINE GROVE MINE

YAVAPAI
GROOM CREEK DISTRICT

Also called Home Run Property and Contest Mine

See: Stan West Corporation (file) Page II-2

ABM Bulletin #137, p. 33

USGS Bulletin 782, p. 113

MJ=5 - Re owners Mine Report (Owner - Arthur C. Weber) - Jersey Lilly,
Yavapai County (4/2/40)

MP-4 - Re Owners Mine Report - Pine Grove, Yavapai County (7/3/39)

May 27, 1957

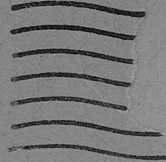
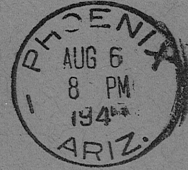
PINE GROVE (WEBER BROS.)

YAVAPAI COUNTY

This property inactive.

MARK GEMMILL

DEPARTMENT OF MINERAL RESOURCES
STATE OF ARIZONA
304 HOME BUILDERS BUILDING
PHOENIX, ARIZONA



Pine
frame

RETURNED
TO
WRITER
REASON CHECKED
Unclaimed
Unknown
For better
Moved, last address
No such address
Mr. A. C. Weber
~~Box 774~~ *not*
Prescott, Ariz.

*Removed
Sign no
address*

PINE GROVE

YAVAPAI COUNTY

KAP WR 5/6/88: D. W. Jaquays brought in originals of an underground and surface mine map for the Arizona Gold Corp. property (Midnight Test Mine - file) Yavapai County dated May 19, 1938. The maps cover the properties known as the Midnight Test as well as the Home Run Group (Success Group (file) and Pine Grove (file), Yavapai County. Mr. Jaquays pointed out some blocks of ore in the upper workings shown on the map which he believes are still present.

* GENERAL REFERENCES

Home Run Prop.
MI 1129A

Pine Grove File

REFERENCE 1 F1 <USBM-ABGWT FILE D.
REFERENCE 2 F2 <USGS 60 MAP 60 997
REFERENCE 3 F3 <ABGWT CLIPPINGS FILE
REFERENCE 4 F4 <AZ DEPT OF MINERAL RESOURCES FILE DATA

U.S. CRIB-SITE FORM

RECORD IDENTIFICATION

RECORD NUMBER B10 <_____
REPORT DATE G1 <8.1.81.2>
REPORTER(SUPERVISOR) G2 <DEWITT, ED, H.
REPORTER AFFILIATION G5 <USGS
SYNONYMS A11 <_____
RECORD TYPE B20 <X,1,M>
INFORMATION SOURCE B30 <1,2>
DEPOSIT NUMBER B40 <_____
FILE LINK IDENT. B50 <USBM-004 025
(last, first, middle initial)
(last, first, middle initial)
*SITE NAME A10 <PINE GROVE MINE

LOCATION

MINING DISTRICT/AREA A30 <GROOM CREEK DISTRICT
COUNTY A60 <YAVAPAI
PHYSIOGRAPHIC PROV A63 <1,2,K
DRAINAGE AREA A62 <1,5,0,7,0,1,0,3,K
QUADRANGLE NAME A90 <GROOM CREEK
SECOND QUAD NAME A92 <_____
ELEVATION A107 <1,6,8,0,0,K,F,T>
STATE A80 <AZ>
COUNTRY A40 <U.S.
LAND STATUS A64 <0,1,K
QUADRANGLE SCALE A100 <24,0,0,0
SECOND QUAD SCALE A91 <_____
(last, first, middle initial)

UTM
NORTHING A120 <3,8,1,5,2,0,0>
EASTING A130 <3,7,0,4,0,0>
ZONE NUMBER A110 <1,1,2>
*ACCURACY
ACCURATE ACC (circle)
ESTIMATED EST <_____
GEODETIC
LATITUDE A70 <_____
LONGITUDE A80 <_____
(circle)

CADASTRAL

TOWNSHIP(S) A77 <0,1,3,N
SECTION(S) A79 <25
SECTION FRACTION(S) A76 <SE
MERIDIAN(S) A81 <GILA AND SALT RIVER
RANGE(S) A78 <0,0,2,W

POSITION FROM NEAREST PROMINENT LOCALITY A82 <0.8 MILES NORTHWEST OF SPRUCE MOUNTAIN LOOKOUT
LOCATION COMMENTS A83 <PINE GROVE MINE ASSUMED TO BE ON CONTEST CLAIM (PATENTED). UTM COORDINATES TO CENTER OF CLAIM.
LOCATED 0.1 MILES NORTHWEST OF THE HOME RUN MINE

* ESSENTIAL INFORMATION
+ ESSENTIAL SOMETIMES OR HIGHLY RECOMMENDED

COMMODITIES PRESENT	C10	C.U. P.P.B. M.A.M. M.A.G.
ORE MINERALS	C30	CHALCOPYRITE, ARGENT, FROUS, GALENA, SILVER, GOLD, SPHALERITE
COMMODITY SUBTYPES	C41	
GEN. ANALYTICAL DATA	C43	7.7
COM. INFO. COMMENTS	C50	

PRODUCER

MAJOR PRODUCTS	MAJOR	<A U							
MINOR PRODUCTS	MINOR	<A G			P B		C U		
POTENTIAL PRODUCTS	POTEN	<E N							
OCCURRENCES	OCCUR	<							

MAIN COMMODITIES PRESENT C11

MINOR COMMODITIES PRESENT C12

OCCURRENCES OCCUR

PRODUCTION YES (circle) PRODUCTION SIZE SM ~~MED~~ ~~LGE~~ (circle one)

PRODUCTION ~~UND~~ ~~NO~~ (circle one)STATUS AND ACTIVITY ~~A20~~ (4)

:STATUS AND ACTIVITY A20<_>

DISCOVERER	L20			
YEAR OF DISCOVERY	L10		NATURE OF DISCOVERY L30	YEAR OF FIRST PRODUCTION L40
PRESENT/LAST OWNER	A12			
PRESENT/LAST OPERATOR	A13	WEBER BROTHERS (1940)		
EXPL./DEV.COMMENTS	L110	ASSUMED TO BE LOCATED ON CONTEST CLAIM (MS. 1549)		

DEPOSIT TYPE(S)	C40 <u>VEN</u>									
DEPOSIT FORM/SHAPE	M10 <u>TABULAR</u>									
DEPTH TO TOP	*M20 <u> </u>		*UNITS M21 <u> </u>		*MAXIMUM LENGTH		*M40 <u> </u>		*UNITS M41 <u> </u>	
DEPTH TO BOTTOM	*M30 <u> </u>		*UNITS M31 <u> </u>		*MAXIMUM WIDTH		*M50 <u> </u>		*UNITS M51 <u> </u>	
DEPOSIT SIZE	*M15 <u>SMALL</u> *M15 <u>MEDIUM</u> *M15 <u>LARGE</u> (circle one)				*MAXIMUM THICKNESS		*M60 <u> </u>		*UNITS M61 <u> </u>	
STRIKE	*M70 <u> </u>					*DIP		*M80 <u> </u>		
DIRECTION OF PLUNGE	*M100 <u> </u>					*PLUNGE		*M90 <u> </u>		
DEP. DESC. COMMENTS	*M110 <u>NO DATA ON DEPOSE OR WORKINGS. GEOLOGY PROBABLY SIMILAR TO HOME RUN MINE</u>									

Workings are: SURFACE **M120** UNDERGROUND **M130** BOTH **M140** (circle one)

DEPTH BELOW SURFACE **M160** *UNITS **M161**

LENGTH OF WORKINGS **M170** *UNITS **M171**

DESC. OF WORK. COM. **M220**

*OVERALL LENGTH **M190** *UNITS **M191**

*OVERALL WIDTH **M200** *UNITS **M201**

*OVERALL AREA **M210** *UNITS **M211**

AGE OF HOST ROCK(S) K1<P.R.O.T.; L.C.R.E.T.V. U/PB ZIRCON GREATER THAN 1760 MILLION YEARS; UNDATED, PROBABLY PALEO-MIOCENE

HOST ROCK TYPE(S) K1A<SLATE, METABASALT, AMPHIBOLITE ; RHYOLITE PORPHYRY

AGE OF IGNEOUS ROCK(S) K2<P.R.O.T.; L.C.R.E.T.V. AS LINE K1

IGNEOUS ROCK TYPE(S) K2A<BASALT, DIORITE ; RHYOLITE PORPHYRY

AGE OF MINERALIZATION K3<L.C.R.E.T. V. UNDATED, PROBABLY LATE CRETACEOUS-PALEOCENE. POSSIBLY PRECAMBRIAN

PERT. MINERALS (NOT ORE) K4<QUARTZ, PYRITE

ORE CONTROL/LOCUS K5<FAULTING, IGNEOUS ACTIVITY, ESPECIALLY DIKE EMPLACEMENT

MAJ. REG. TRENDS/STRUCT. N15<FOLIATION IN PRECAMBRIAN ROCKS TRENDS N10E TO N20E

TECTONIC SETTING N15<

SIGNIFICANT LOCAL STRUCT. N70<VEINS PARALLEL FOLIATION AND CROSSCUT IT BY 10-20 DEGREES, TRENDING N20E TO N-S

SIGNIFICANT ALTERATION N75<MINOR

PROCESS OF CONC./ENRICH. N80<OXIDATION AT NEAR SURFACE

FORMATION AGE N30<P.R.O.T. V. U/PB ZIRCON GREATER THAN 1760 MILLION YEARS

FORMATION NAME N30A<GREEN GULCH VOLCANICS

SECOND FM AGE N35<

SECOND FM NAME N35A<

IGNEOUS UNIT AGE N50<P.R.O.T. V. UNDATED, PROBABLY GREATER THAN OR EQUAL TO 1760 MILLION YEARS

IGNEOUS UNIT NAME N50A<UNNAMED GABBRO

SECOND IG. UNIT AGE N55<L.C.R.E.T.-T.E.R.T.V. UNDATED, PROBABLY 75 TO 60 MILLION YEARS

SECOND IG. UNIT NAME N55A<UNNAMED RHYOLITE PORPHYRY DIKES

GEOLOGY COMMENTS N85<DEPOSIT IS QUARTZ VEIN WHICH CUTS PROTEROZOIC ROCKS

GENERAL COMMENTS GEN<

4/2/40 - Owner Weber Bros. (A.C. & W. C. Weber)
344 N. 4th Avenue
Phoenix, Arizona

MP-4 - Gold - 2 fractional claims; road to mine good, 7½ miles
Senator Highway from Prescott; a shaft 55' and 1,000
workings; high grade lenses in oxide zone; have lease
on adjoining mill; lease, terms on application; Groom
Creek Mining District, Yavapai County (12/19/39)

MP#4

DEPARTMENT OF MINERAL RESOURCES
STATE OF ARIZONA
OWNERS MINE REPORT

Date July 3

Mine Pine Grove (Weber Bros.)

District Groom Creek (Hassa)

Former name Contest

Owner A. C. & W. C. Weber

Operator Same

President

Mine Supt.

Principal Metals Gold, Ag.

Production Rate 25 tons max.

Power: Amt. & Type Gas engine

Operations: Present Lease on Home Run Custom Milling

Location $7\frac{1}{4}$ miles ~~from~~ ^{on} Senator Highway
from Prescott

Address Box 774, Prescott

Address

Gen. Mgr.

Mill Supt.

Men Employed 2 men

Mill: Type & Cap.

2 - 850 # stamps

Plate

Jig

36 x 30 Ball Mill Classifier

2 - 22 x 22 Denver cuts

1 - Duster Table pumps, tanks
and accessories

Operations Planned Unwatering Home Run mining

Number Claims, Title, etc. Pine Grove (2 fractions)
Big Three

Description: Topog. & Geog.

Mine Workings: Amt. & Condition

Shaft (55')

1000' workings

(over)

Geology & Mineralization High grade lenses in oxide zone - vein in Diorite

Ore: Positive & Probable, Ore Dumps, Tailings

Mine, Mill Equipment & Flow Sheet

Road Conditions, Route Good

Water Supply Home Run Shaft

Brief History Started October, 1932 (Located by Ed. McCarthy, 1930) by Weber Bros.

Special Problems, Reports Filed

Remarks

If property for sale: Price, terms and address to negotiate.
ore in Home Run

Looking for leasers to take out

Signed..... A. C. Weber

Use additional sheets if necessary.

DEPARTMENT OF MINERAL RESOURCES
STATE OF ARIZONA
OWNERS MINE REPORT

Date July 3

1. Mine PINE GROVE (Weber Bros.)
2. Mining District & County Groom Creek (Hassan)
3. Former name Contest
4. Location 7 1/2 miles Senator Highway from Prescott
5. Owner A. C. & W. C. Weber
6. Address (Owner) Box 774, Prescott
7. Operator Same
8. Address (Operator)
9. President
10. Gen. Mgr.
11. Mine Supt.
12. Mill Supt.
13. Principal Metals Gold, Ag.
14. Men Employed 2 men
15. Production Rate 25 tons max.
16. Mill: Type & Cap.
2- 850 # stamps
Plate
Jig
36 x 30 Ball Mill Classifier
2 - 22 x 22 Denver cuts
1 - Duster Table pumps, tanks and accessories
17. Power: Amt. & Type Gas engine
18. Operations: Present Lease on Bone Run Custom Milling.
19. Operations Planned Unwatering Bone Run mining
20. Number Claims, Title, etc. Pine Grove (2 fractions)
Big Three
21. Description: Topography & Geography
22. Mine Workings: Amt. & Condition Shaft (55')
1000' workings

23. Geology & Mineralization **High grade lenses in oxide zone - vein in Diorite**

24. Ore: Positive & Probable, Ore Dumps, Tailings

24-A Vein Width, Length, Value, etc.

25. Mine, Mill Equipment & Flow Sheet

26. Road Conditions, Route

27. Water Supply

28. Brief History

Started October, 1932 (Located by Ed. McCarthy, 1930) by Weber Bros.

29. Special Problems, Reports Filed

30. Remarks

31. If property for sale: Price, terms and address to negotiate.

Looking for leasers to take out ore

in Home Run

32. Signed **A. C. Weber**

33. Use additional sheets if necessary.

MP #4

DEPARTMENT OF MINERAL RESOURCES
STATE OF ARIZONA
OWNERS MINE REPORT

Date July 3

1. Mine PINE GROVE (Weber Bros.)
2. Mining District & County Groom Creek (Hassa)
3. Former name Contest
4. Location $7\frac{1}{4}$ miles Senator Highway from Prescott
5. Owner A. C. & W. C. Weber
6. Address (Owner) Box 774, Prescott
7. Operator Same
8. Address (Operator)
9. President
10. Gen. Mgr.
11. Mine Supt.
12. Mill Supt.
13. Principal Metals Gold, Ag.
14. Men Employed 2 men
15. Production Rate 25 tons max.
16. Mill: Type & Cap.
2- 850 # stamps
Plate
Jig
36 x 30 Ball Mill Classifier
2 - 22 x 22 Denver cuts
1 - Duster Table pumps, tanks and accessories
17. Power: Amt. & Type Gas engine
18. Operations: Present Lease on Home Run Custom Milling.
19. Operations Planned Unwatering Home Run mining
20. Number Claims, Title, etc. Pine Grove (2 fractions)
Big Three
21. Description: Topography & Geography
22. Mine Workings: Amt. & Condition Shaft (55')
1000' workings

(over)

23. Geology & Mineralization High grade lenses in oxide zone - vein in Diorite

24. Ore: Positive & Probable, Ore Dumps, Tailings

24-A Vein Width, Length, Value, etc.

25. Mine, Mill Equipment & Flow Sheet

26. Road Conditions, Route **Good**

27. Water Supply **Home run Shaft**

28. Brief History **Started October, 1932 (Located by Ed. McCarthy, 1930) by Weber Bros.**

29. Special Problems, Reports Filed

30. Remarks

31. If property for sale: Price, terms and address to negotiate.

Looking for leasers to take out ore

in Home Run

32. Signed.....**A. C. Weber**.....

33. Use additional sheets if necessary.

DEPARTMENT OF MINERAL RESOURCES
STATE OF ARIZONA
OWNERS MINE REPORT

Mine Pine Grove (Weber Bros.)

District Groom Creek (Hesse)

Former name Contest

Owner A.C. & W.C. Weber

Operator Same

President

Mine Supt.

Principal Metals

Production Rate

Power: Amt. & Type

Operations: Present

Operations Planned

Number Claims, Title, etc.

Description: Topog. & Geog.

Mine Workings: Amt. & Condition

Date

Location

Address

Address

Gen. Mgr.

Mill Supt.

Men Employed

Mill: Type & Cap.

July 3

7 $\frac{1}{4}$ miles Senator

Highway from Prescott

Box 774, Prescott

2 men

2 - 850 # Stamps

Plate

Jig

36 x 30 Ball mill

Classifier

2 - 22 x 22 Denver
Cul

1 - Deister Table

Pumps, Tanks &
Accessories

Lease on Home Run
Custom Milling

Unwatering Home Run
& mining

Pine Grove (2 fractions)
Big Three

Shaft (55')
1000' workings

Geology & Mineralization

High grade lenses in oxide zone
hem in diorite

Ore: Positive & Probable, Ore Dumps, Tailings

Mine, Mill Equipment & Flow Sheet

Road Conditions, Route

Good

Water Supply

Home Run Shaft

Brief History

Started October 1932 (Located by Ed. Mc Carthy 1930)
by Weber Bros.

Special Problems, Reports Filed

Remarks

If property for sale: Price, terms and address to negotiate.

Looking for leasers to take out
ore in Home Run

Signed

A. C. Weber

Use additional sheets if necessary.

DEPARTMENT OF MINERAL RESOURCES,

News Items

Date

July 3, 39

Mine

Pine Grove (Weber Bros)

Location

Groom Creek

Owner

A. C. & W. C. Weber

Address

Box 774 Prescott

Operating Co.

Selvas

Address

4

Pres.

Genl. Mgr.

Mine Supt.

Mill Supt.

Principal Metals

Cu

Men Employed

Silver 2.1 other

Production Rate

variable

Mill, Type & Capacity

25 Ton

Stamps, 3'x3' Ballmill Plates

Power, Amt. & Type

Flotation Tables

Gas Engine

Signed

Carl S. Burkh Jr

(Over)

DEPARTMENT OF MINERAL INDUSTRY
Present Operations

Mining Custom ore
Date July 2, 34

Mine Pine Grove (Wagon Box)
Location

New Work Planned
Owner A.C. & W.C. Wicks

Address
Opening Home Bldg

Mine on a lease

Operating Co. Selco

Address

Misc. Notes

Press

Gen'l Mfr.

Mine Supt.

Mill Supt.

Principal Metals

Man Employed

Production Rate

Mill Type & Capacity

Stamps, 8' x 8' 1/2' 1/2'

Power, Amt. & Type

Flotation Tanks

Gas Engines

Stamps

Stamps

Stamps