



CONTACT INFORMATION

Mining Records Curator
Arizona Geological Survey
1520 West Adams St.
Phoenix, AZ 85007
602-771-1601
<http://www.azgs.az.gov>
inquiries@azgs.az.gov

The following file is part of the

Arizona Department of Mines and Mineral Resources Mining Collection

ACCESS STATEMENT

These digitized collections are accessible for purposes of education and research. We have indicated what we know about copyright and rights of privacy, publicity, or trademark. Due to the nature of archival collections, we are not always able to identify this information. We are eager to hear from any rights owners, so that we may obtain accurate information. Upon request, we will remove material from public view while we address a rights issue.

CONSTRAINTS STATEMENT

The Arizona Geological Survey does not claim to control all rights for all materials in its collection. These rights include, but are not limited to: copyright, privacy rights, and cultural protection rights. The User hereby assumes all responsibility for obtaining any rights to use the material in excess of "fair use."

The Survey makes no intellectual property claims to the products created by individual authors in the manuscript collections, except when the author deeded those rights to the Survey or when those authors were employed by the State of Arizona and created intellectual products as a function of their official duties. The Survey does maintain property rights to the physical and digital representations of the works.

QUALITY STATEMENT

The Arizona Geological Survey is not responsible for the accuracy of the records, information, or opinions that may be contained in the files. The Survey collects, catalogs, and archives data on mineral properties regardless of its views of the veracity or accuracy of those data.

PRINTED: 03/05/2003

ARIZONA DEPARTMENT OF MINES AND MINERAL RESOURCES AZMILS DATA

PRIMARY NAME: HOG WASH

ALTERNATE NAMES:

SANTA CRUZ COUNTY MILS NUMBER: 256

LOCATION: TOWNSHIP 20 S RANGE 15 E SECTION 12 QUARTER SE
LATITUDE: N 31DEG 42MIN 22SEC LONGITUDE: W 110DEG 45MIN 41SEC
TOPO MAP NAME: MT WRIGHTSON - 7.5 MIN

CURRENT STATUS: RAW PROSPECT

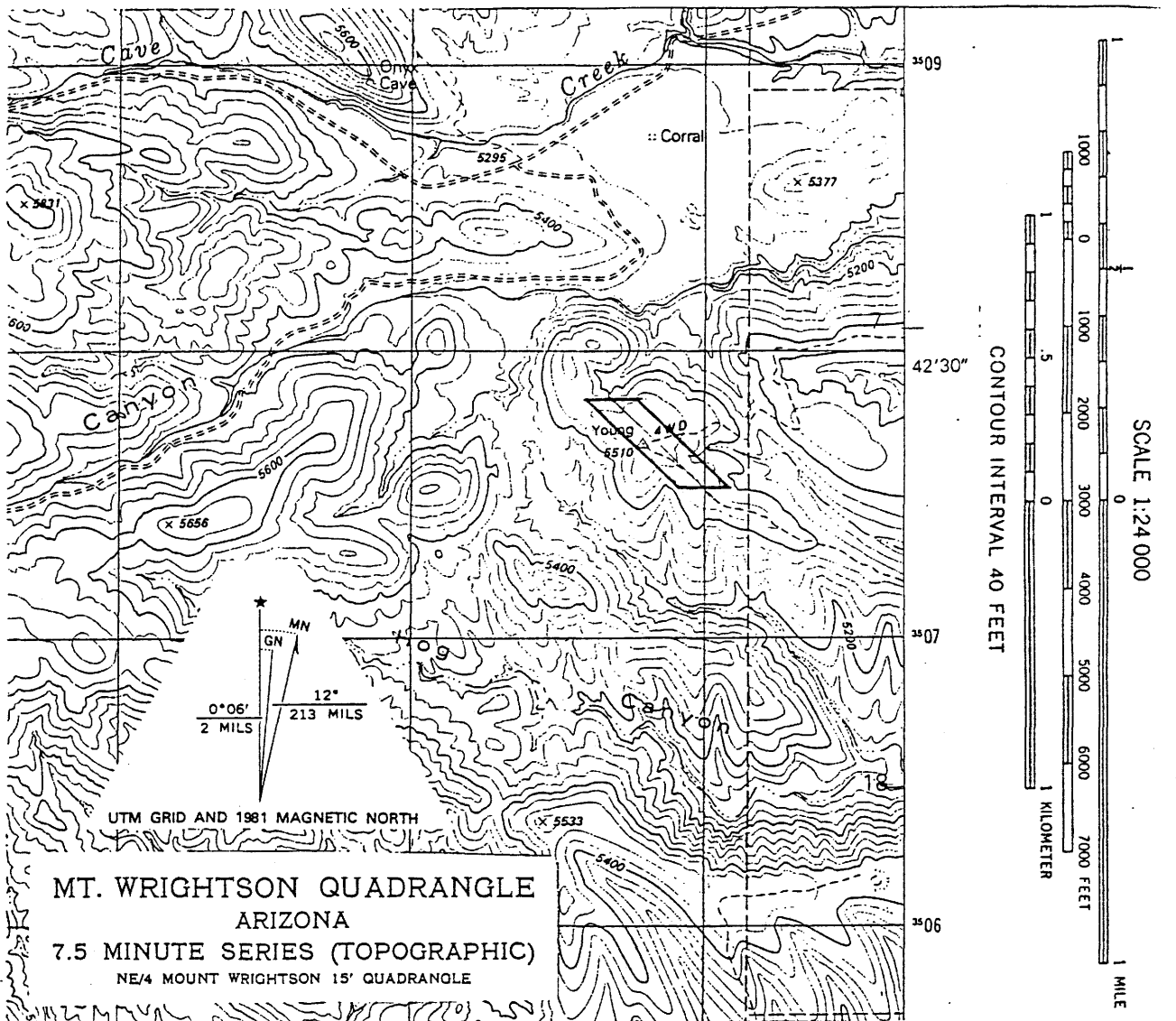
COMMODITY:
UNKNOWN

BIBLIOGRAPHY:
ADMMR HOG WASH MINE FILE

CLAIM MAP

VI

Lode
Placer (✓)



Scale: 1:24,000

1. The above map depicts the "HOG WASH" mining claim, which is located in Section (s) 12, Township 20 S, Range 15 E, G&SRM, SANTA CRUZ County, Arizona.

2. The type of corner and location monuments used are as follows:
FIELD ROCK MONUMENTS (7 ea TOTAL)

3. The bearings and distances in degrees and feet between claim corners are as depicted on map.

PLAN OF OPERATIONS FOR MINING ACTIVITIES
ON NATIONAL FOREST LANDS

Submitted by *A. J. Martino Jr.* LOCATOR/OPERATOR 12-15-95
Signature Title Date

Plan Received by _____
Signature Title Date

I. GENERAL INFORMATION

- A. Name of Mine/Project "HOG WASH"
- B. Type of Operation LODE
(lode, placer, mill, exploration, development, production, other)
- C. Is this a (new/continuing) operation? (CIRCLE ONE)
If continuing a previous operation, this plan (replaces/modifies/supplements) a previous plan of operation.
(CIRCLE ONE)
- D. Proposed start-up date of operation AS SOON AS APPROVED / LATE JAN '96?
- E. Expected total duration of this operation ONE YEAR
- F. If seasonal, expected date of annual reclamation/stabilization close-out DEC. 24, 1996
- G. Expected date for completion of all required reclamation DEC. 24, 1996

II. PRINCIPALS

- A. Name, address and phone number of operator *Ignacio de Martino Jr.*
1700 N. PARK AVE, TUCSON, AZ. 85719 tel# 1-520-623-5127
- B. Name, address and phone number of authorized field representative (if other than the operator). Attach authorization to act on behalf of operator.
N/A
- C. Name, address and phone number of owners of the claims (if different than the operator):
N/A

(If more space is needed to fill out a block of information, use additional sheets and attach to form.)

- D. Name, address and phone number of any other lessees, assigns, agents, etc., and briefly describe their involvement with the operation, if applicable:

RICHARD ALVAREZ and CEFERINO CORONADO / 1425 E. WAREHOUSE, TUCSON, AZ. 85719

TELEPHONE: (520) 791-4631 + PROVIDE TRANSPORTATION and EXCAVATION ASSISTANCE
M-F 7am-5pm + SO THAT I AM NEVER OUT ON CLAIM ALONE!

III. PROPERTY OR AREA

Name of claim, if applicable, and the legal land description where the operation will be conducted.

MC #	Name	Section	Township	Range
	"HOG WASH"	12	20 S	15 E

IV. DESCRIPTION OF THE OPERATION

- A. Access. Show on a map (USGS quadrangle map or a National Forest map, for example) the claim boundaries, if applicable, and all access needs such as roads and trails, on and off the claim. Specify which Forest Service roads will be used, where maintenance or reconstruction is proposed, and where new construction is necessary. For new construction, include construction specifications such as widths, grades, etc., location and size of culverts, describe maintenance plans, and the type and sizes of vehicles and equipment that will use the access routes.

IN VEHICLE: FROM HWY. 83, WEST ON FOREST SERVICE ROAD [92], CROSS CAVE CREEK and PROCEED TO GARDINER CANYON F.S. RD. [785] and TURN LEFT. PROCEED ON THIS ROAD UNTIL IT ENCOUNTERS GARDINER CANYON CREEK and THIS ROAD TURNS WEST. AT THIS POINT TURN LEFT and PROCEED TO A DOUBLE PASTURE TO THE SOUTH. ENTER FIRST PASTURE GATE, PROCEED TO END OF VEHICLE TRACK and PARK VEHICLE. ON FOOT: CROSS GARDINER CANYON CREEK and PROCEED SOUTH UP FIRST SMALL WASH TO ITS HEAD. AT THIS POINT TURN LEFT (EAST) and PROCEED TO NORTH-CENTERLINE CLAIM MARKER OF "HOG WASH" LOBE CLAIM. NO ROAD or TRAIL MAINT. or CONSTRUCTION IS PROPOSED. PICK-UP TRUCK or 4WD PASS. VEHICLES ON ROADS ONLY.
NOTE: THERE IS A POSSIBILITY THAT AN ALTERNATE ROUTE MAY BE USED IN THE FUTURE; PROCEED WEST ON F.S. RD. [785] TO F.S. RD. [4104] WHICH PASSES OVER "HOG WASH" CLAIM.

SEE DETAIL # (III) and F.S. MAP # (IV) FOR GRAPHICS OF ACCESS ROUTES

- B. Map, Sketch or Drawing. Show location and layout of the area of operation. Identify any streams, creeks or springs if known. Show the size and kind of all surface disturbances such as trenches, pits, settling ponds, stream channels and run-off diversions, waste dumps, drill pads, timber disposal or clearance, etc. Include sizes, capacities, acreage, amounts, locations, materials involved, etc.

PLEASE SEE PHOTOS # (I), # (II); DETAIL # (III); and F.S. MAP # (IV)

ALSO SEE ENCLOSED LOCATION NOTICE (LODE) and ATTACHED CLAIM MAP #'s (V) & (VI)

EXCAVATION: TRENCH = 8' HT. X 3' W. X 10' DPTH.	WASTE ROCK DUMP: WASTE ROCK TO BE USED AS WALL ON DOWN-SLOPE TO PRESERVE EXCAVATED SOIL.
TUNNEL "A" = 6' HT. X 3' W X 25' LGTH.	SEE DETAIL (III) SIDE VIEW DOOR & TIMBERS TO BE PURCHASED/WALKED IN.
TUNNEL "B" = 6' HT. X 3' W X 20' LGTH.	NO TIMBER CLEARANCE @ OPERATION!

(If more space is needed to fill out a block of information, use additional sheets and attach to form.)

- C. Project Description. Describe all aspects of the operation including mining, milling, and exploration methods, materials, equipment, workforce, construction and operation schedule, power requirements, how clearing will be accomplished, topsoil stockpiled, waste rock placement, tailings disposal; proposed number of drillholes and depths; depth of proposed suction dredging, and how gravels will be replaced, etc. Calculate production rates of ore. Include justification and calculations for settling pond capacities and, the size of runoff diversion channels.

THE HOG WASH "LODE CLAIM" PROPOSED EXCAVATION SITE IS AT THE BASE OF AN ERODED OUTCROP OR REEF OF ALTERNATING, VERTICAL, TABULAR LAYERS OF RED SILTSTONE AND SHALE WITH SOFT BROWNISH-GRAY SANDSTONE. THIS TYPE OF FORMATION DEMANDS EXPLORATION FOR LOCATABLE MINERALS. IT IS MY BELIEF THAT AN EXPLORATION OF THE ROCK FACE, BELOW THE ROOTS OF THE VEGETATION THAT HAS GROWN ON THE ERODED ROCK & SOIL, WILL REVEAL A DEPOSIT OF MINERAL IN SANDSTONE WHICH COULD PROVE PROFITABLE IF MINED "BY HAND" IN THIS PICK & SHOVEL OPERATION.

THE PROPOSED EXPLORATION INVOLVES DIGGING IN TOWARDS FACE OF ROCK MASS WITHOUT DISTURBING ANY OF THE EXISTING TREES AND SHRUBS. ONCE THE ROCK MASS IS REACHED, A TUNNEL OF NOT MORE THAN 25' IN LENGTH IS PROPOSED; THIS TUNNEL WOULD PROCEED TO THE EAST (UNDER ROOTS OF VEGETATION) WITH THE FACE OF THE ROCK MASS SERVING AS THE SOUTH WALL OF TUNNEL "A". THE PROPOSED ENTRY TRENCH AND 90° TUNNEL "A" INVOLVE THE REMOVAL OF APPROXIMATELY 5 CUBIC YARDS OF ROCK/SOIL AND THIS AMOUNT WOULD BE THE MAXIMUM AMOUNT STORED OUTSIDE THE EXPLORATORY EXCAVATION. IF TUNNEL "A" PROVES TO BE "NOT WITH MINERAL" THEN THE PROPOSED TUNNEL "B" WOULD PROCEED TO THE WEST, AT THE SAME LEVEL AS TUNNEL "A", WITH TIMBERING (IF ANY) FROM TUNNEL "A" BEING REMOVED FROM THE VERY EASTERLY END AND UTILIZED IN TUNNEL "B" AS IT PROCEEDS TO THE RIGHT/WEST OF STEPPED ENTRY TRENCH. ALL ROCKS/SOIL THAT IS REMOVED FROM TUNNEL "B" (TUNNEL "B" NOT MORE THAN 20' IN LENGTH) WILL BE PLACED IN TUNNEL "A", SO THAT AS TUNNEL "B" PROGRESSES, TUNNEL "A" IS FILLED-UP AND THESE ROCKS/SOILS STAY UNDER-GROUND. BOTH TUNNELS THAT ARE PROPOSED WILL USE THE ROCK MASS AS THE SOUTH WALL. WHEN THE MINERAL BEARING PART OF THIS FORMATION IS DISCOVERED A NEW PLAN OF OPERATION WILL BE SUBMITTED, BY ME. IF THIS OPERATION FINDS NO MINERAL OR MINERAL THAT DOES NOT PROVE PROFITABLE AFTER COMPLETELY EXPLORING ENTIRE FACE OF ROCK MASS BELOW GROUND, THEN ALL ROCK/SOIL STORED ON 30° SLOPE NEAR ENTRY-TRENCH WILL BE REPLACED INTO TUNNEL "B" AND THEN ENTRY-TRENCH WILL BE FILLED IN. (RECLAMATION) ONLY HANDTOOLS TO BE USED - NO TOXIC SUBSTANCES OR HAZARDOUS MATERIALS TO BE USED OR GENERATED BY THIS PROPOSED OPERATION. PURCHASED LUMBER TO BE USED FOR COVER OVER ENTRY AND FOR TIMBERING (IF NECESSARY). NO MILLING, NO TAILING DUMP, NO EQUIPMENT, NO POWER REQUIREMENTS, NO SUCTION DREDGING, NO SETTLING PONDS, NO RUNOFF DIVERSION @ THIS CLAIM/OPERATION. PRODUCTION RATES OF ORE: TO BE DETERMINED AFTER EXPLORATION. WORKFORCE: Minimum of 2 MEN - MAX. of 4 MEN / OPERATION SCHEDULE: 1 YEAR / EXPLORATION

THE LOCATION OF THE PROPOSED ENTRY-TRENCH AND THE PROPOSED TUNNELS HAVE BEEN DETERMINED SO THAT NO VEGETATION, ABOVE-GROUND, & ROOTS, BELOW-GROUND WILL BE DISTURBED AND IT IS WITH THAT THOUGHT IN MIND (ABSOLUTELY NO DESTRUCTION OF NATIONAL FOREST LAND) THAT THIS PLAN OF OPERATIONS HAS BEEN DRAFTED.

PLEASE SEE ATTACHMENTS (I, II, III, IV, V, VI) WHICH ARE ENCLOSED.

- D. Equipment and Vehicles. Describe that which is proposed for use in your operation (Examples: drill, dozer, wash plant, mill, etc.). Include: sizes, capacity, frequency of use, etc.

EQUIPMENT: HANDTOOLS: PICK, SHOVEL, PRYBAR, HAMMER, STARDRILL, etc.

VEHICLES: PASSENGER VEHICLES / PICK-UP TRUCKS / USUALLY ONE VEHICLE PER WORK-OUTING.

FREQUENCY OF USE: DAY TRIPS / 6 or MONTH APPROX. *John*

- E. Structures. Include information about fixed or portable structures or facilities planned for the operation. Show locations on the map. Include such things as living quarters, storage sheds, mill buildings, thickener tanks, fuel storage, powder magazines, pipe lines, water diversions, trailer, sanitation facilities including sewage disposal, etc. Include engineering design and geotechnical information for project facilities, justification and calculations for sizing of tanks, pipelines and water diversions, etc.

NO STRUCTURES, FIXED or PORTABLE, and NO FACILITIES OF ANY KIND

PLANNED for THIS OPERATION. *John* OTHER THAN A DOOR

TO COVER THE EXCAVATED MINE ENTRANCE and ANY TIMBERING or

SHORING-UP OF SHORT LATERAL TUNNEL(S). ALL LUMBER TO BE

PURCHASED and "WALKED-IN" TO PROPOSED SITE OF EXCAVATION.

TOOLS TO BE STORED WITHIN MINE ENTRANCE for EASE of AVAILABILITY. *John*

V. ENVIRONMENTAL PROTECTION MEASURES (SEE 36 CFR 228.8)

- A. Air Quality. Describe measures proposed to minimize impacts on air quality such as obtaining a burning permit for slash disposal or dust abatement on roads.

AIR QUALITY WILL NOT BE AFFECTED WHATSOEVER BY THIS OPERATION. *John*

B. Water Quality. State how applicable state and federal water quality standards will be met. Describe measures or management practices to be used to minimize water quality impacts and meet applicable standards.

1. State whether water is to be used in the operation, and describe the quantity, source, methods and design of diversions, storage, use, disposal, and treatment facilities. Include assumptions for sizing water conveyance or storage facilities.
2. Describe methods to control erosion and surface water runoff from all disturbed areas, including waste and tailings dumps.
3. Describe proposed surface water and groundwater quality monitoring, if required, to demonstrate compliance with federal or state water quality standards.
4. Describe the measures to be used to minimize potential water quality impacts during seasonal closures, or for a temporary cessation of operations.
5. If land application is proposed for waste water disposal, the location and operation of the land application system must be described. Also describe how vegetation, soil, and surface and groundwater quality will be protected if land application is used.

1. NO WATER TO BE USED IN THIS OPERATION. (OTHER THAN FOR DRINKING.)

2. TEMPORARY WALL ON SLOPE MADE WITH WASTE ROCK AND FIELD ROCK
TO KEEP SOIL STORED UP-SLOPE FROM WALL, FROM RUNNING OFF
DURING RAINS, SEE ENCLOSED DETAIL # (III) SIDE VIEW

3. WATER QUALITY UNAFFECTED BY THIS PROPOSED DIG. & MONITORING NOT REQUIRED

4. AS STATED IN "2."

5. NO WASTE WATER PRODUCED @ THIS CLAIM

C. Solid Wastes. Describe the quantity and the physical and chemical characteristics of solid waste produced by the operation. Describe how the wastes will be disposed of including location and design of facilities, or treated so as to minimize adverse impacts.

THE ONLY SOLID WASTES PRODUCED BY THIS PROPOSED OPERATION

ARE: ROCKS - (LIMESTONE & SANDSTONE / RED SILTSTONE AND SHALE)

SOIL - (ABOVE ROCKS THAT HAVE ERODED, MIXED WITH ORGANICS)

D. Scenic Values. Describe protection of scenic values such as screening, slash disposal, or timely reclamation.

OVERALL SITE OF PROPOSED EXCAVATION CAN BE SEEN FROM A PORTION OF F.S. RD. 785
THE GREAT DISTANCE AND THE SCREENING SUPPLIED BY SHADE TREES AT DIG SITE
PRECLUDE THAT ANYONE ON THIS ROAD WOULD NOTICE ACTIVITY ON THE GROUND @ SITE
WITHOUT POWERFUL BINOCULARS. NO VEGETATION TO BE DISTURBED BY THIS "DIG".

SEE ENCLOSED PHOTOGRAPHS # (I) SHOWING F.S. RD. 785 WITH WHITE DASHED LINE
AND NORTH CENTERLINE MONUMENT, MARKED WITH (N).
(II) SITE OF PROPOSED EXCAVATION: WHITE LINE = TRENCH.

(If additional space is needed to fill out a form or if additional information, use additional sheets and attach to form.)

- E. Fish and Wildlife. Describe measures to maintain and protect fisheries and wildlife, and their habitat (includes threatened, endangered, and sensitive species) affected by the operations.

THIS PROPOSED EXCAVATION WILL HAVE NO IMPACT ON
FISH AND WILDLIFE EXISTING IN THIS AREA OF THE
CORONADO NATIONAL FOREST. *js*

- F. Cultural Resources. Describe measures for protecting known historic and archeological values, or new sites in the project area.

NO KNOWN CULTURAL RESOURCES EXIST AT/ON THE "HOGWASH"
LODE CLAIM SITE. (ALL AGENCIES TO BE NOTIFIED BY ME,
IMMEDIATELY, UPON DISCOVERING ANY ARTIFACT, etc.) *js*

- G. Hazardous Substances.

1. Identify the type and volume of all hazardous materials and toxic substances which will be used or generated in the operations including cyanide, solvents, petroleum products, mill, process and laboratory reagents.

NO HAZARDOUS MATERIALS OR TOXIC SUBSTANCES TO BE
USED OR GENERATED BY THIS "PICK AND SHOVEL" OPERATION. *js*

2. For each material or substance, describe the methods, volume, and frequency of transport (include type of containers and vehicles), procedures for use of materials or substances, methods, volume, and containers for disposal of materials and substances, security (fencing), identification (signing/labeling), or other special operations requirements necessary to conduct the proposed operation.

IF APPROVED, THIS OPERATION WILL COMMENCE IMMEDIATELY
AND THE PROPOSED TRENCH WILL BE SECURELY BOARDED-UP
(WITH PURCHASED LUMBER THAT IS "WALKED-IN" TO EXCAVATION SITE),
A SIGN WILL BE POSTED @ THE BOARD-UP WITH POSTED:
"HOGWASH", "DANGER", "NO ENTRY". *js*

(If more space is needed for text, use additional sheets and attach to form.)

3. Describe the measures to be taken for release of a reportable quantity of a hazardous, or the release of a toxic substance. This includes plans for spill prevention, containment, notification, and cleanup.

NO HAZARDOUS MATERIALS OR TOXIC SUBSTANCES TO BE USED at the "HOG WASH" PROPOSED OPERATION.

- H. Reclamation. Describe the annual and final reclamation standards based on the anticipated schedule for construction, operations, and project closure. Include such items as the removal of structures and facilities including bridges and culverts, a revegetation plan, permanent containment of mine tailings, waste, or sludges which pose a threat of a release into the environment, closing ponds and eliminating standing water, a final surface shaping plan, and post operations monitoring and maintenance plan.

REPLACE ROCKS and SOIL IN TRENCH-TO-SHORT-TUNNEL AREA.
REPLACE /ADD ORGANIC MATERIAL TO TOP 6" OF LAST "LAYER" OF SOIL

(THIS ABOVE RECLAMATION CONTINGENT ON NOT ENCOUNTERING A SUFFICIENTLY PROFITABLE LOCATABLE MINERAL DEPOSIT TO WARRANT FURTHER EXCAVATION.)

VI. FOREST SERVICE EVALUATION OF PLAN OF OPERATIONS

- A. Required changes/modifications/special mitigation for plan of operations: _____

- B. Bond. Reclamation of disturbances connected with this plan c operations is covered by Reclamation Performance Bond No. _____, dated _____, signed by _____ (Principal) and _____ (Surety), for the penal sum of _____. This Reclamation Performance Bond is a guarantee of faithful performance with the terms and conditions listed below, and with the reclamation requirements agreed upon in the plan of operations. This Reclamation Performance Bond also extends to and includes any unauthorized activities conducted in connection with this operation.

The bond amount for this Reclamation Performance Bond was based on a bond calculation worksheet. The bond amount may be adjusted during the term of this proposed plan of operations in response to changes in the operations or to changes in the economy. Both the Reclamation Performance Bond and the bond calculation worksheet are attached to and made part of this plan of operations.

Should the bond delivered herewith, or any bond delivered hereafter in connection with this plan of operations, no longer be in effect, the operator shall, within 30 calendar days of receipt of the Forest Service demand, furnish a new bond satisfactory to the Forest Service. Until such time that a satisfactory bond is received by the Forest Service, no further operations other than reclamation activities will be allowed.

Acceptable bond securities (subject to change) include:

1. Negotiable Treasury bills and notes which are unconditionally guaranteed as to both principle and interest in an amount equal at their par value to the penal sum of the bond; or
2. Certified or cashier's check, bank draft, Post Office money order, cash, assigned certificate of deposit, assigned savings account, blanket bond, or an irrevocable letter of credit equal to the penal sum of the bond.

TERMS AND CONDITIONS

- A. If a bond is required, it must be furnished before approval of the plan of operations.
- B. Information provided with this plan marked confidential will be treated in accordance with the agency's laws, rules and regulations.
- C. Approval of this plan of operations does not constitute certification of ownership to any person named herein and/or recognition of the validity of any mining claim named herein.
- D. Approval of this plan does not relieve me of my responsibility to comply with other applicable state or federal laws, rules or regulations.
- E. If previously undiscovered cultural resources (historic or prehistoric objects, artifacts, or sites) are exposed as a result of operations, those operations will not proceed until notification is received from the Authorized Officer that provisions for mitigating unforeseen impacts as required by 36 CFR 228.4(e) and 36 CFR 800 have been complied with.
- F. This plan of operations has been approved for a period of _____ or until _____. A new or revised plan must be submitted in accordance with 36 CFR part 228, subpart A, if operations are to be continued after that time period.

OPERATING PLAN ACCEPTANCE:

I/We have reviewed and agree to comply with all conditions in this plan of operations including the required changes, modifications, special mitigation, and reclamation requirements. I/We understand that the bond will not be released until the Authorized Officer in charge gives written approval of the reclamation work.

Operator (or Authorized Representative)

(Date)

OPERATING PLAN APPROVAL:

(Name)

(Title)

(Authorized Officer)

(Date)

Public reporting burden for this collection of information is estimated to average 2 hours per response, including the time for reviewing instructions, searching existing data sources, gathering and maintaining the data needed, and completing and reviewing the collection of information. Send comments regarding this burden estimate or any other aspect of this collection of information, including suggestions for reducing this burden, to Department of Agriculture, Clearance Officer, OIRM, Room 404-W, Washington, D.C. 20250; and to the Office of Management and Budget, Paperwork Reduction Project (OMB #0596-0022), Washington, D.C. 20503.

I & II

MT. WRIGHTSON, Santa Rita mountains, East flank of range.

FOREST SERVICE
ROAD 785

LOOKING N.W.
FROM CLAIM @
HIGHEST ROCK

I



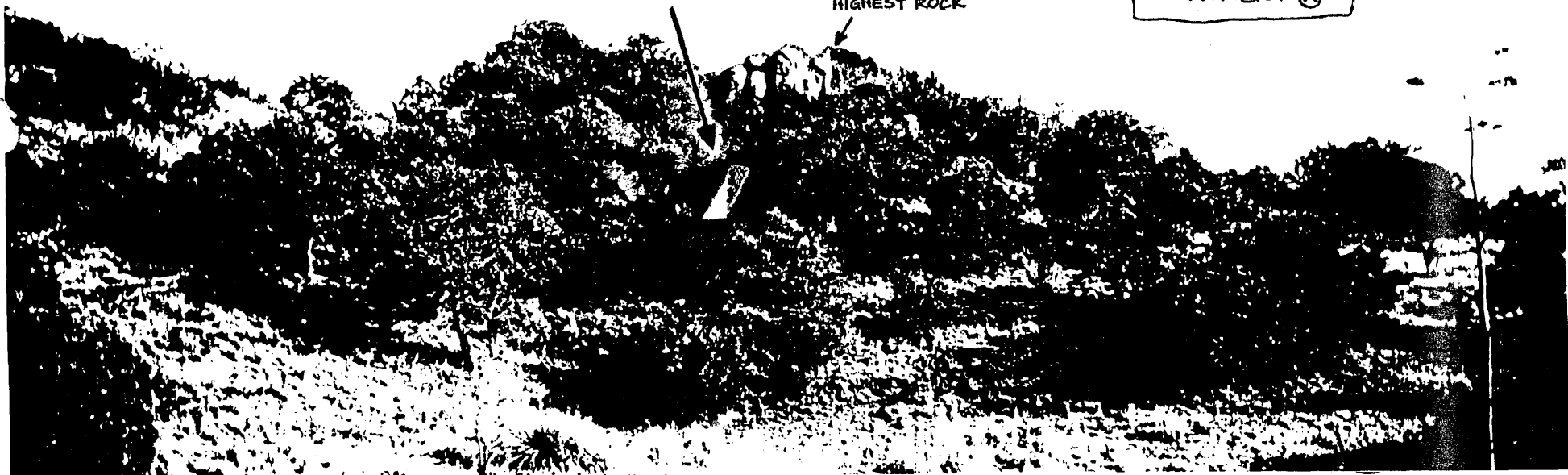
"HOG WASH" LODE CLAIM, Santa Cruz County, Arizona - SEC. 12/TWNSHP. 20 S/Range 15 E

PROPOSED
EXCAVATION

HIGHEST ROCK

LOOKING S.E.
FROM N. center line
MONUMENT @ N

II

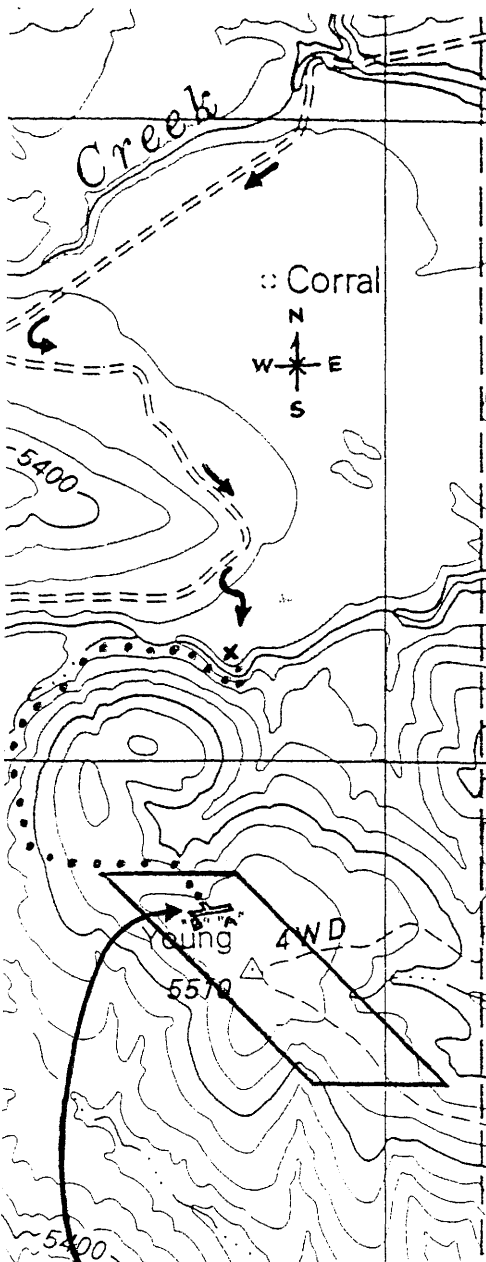


"HOG WASH" LOBE CLAIM, Santa Cruz County, Arizona / S 12 / T 20S / R 15E.

III

- DETAIL of PROPOSED EXCAVATION -

(FOR CLARITY, TREES and SHRUBS ARE NOT SHOWN HERE)

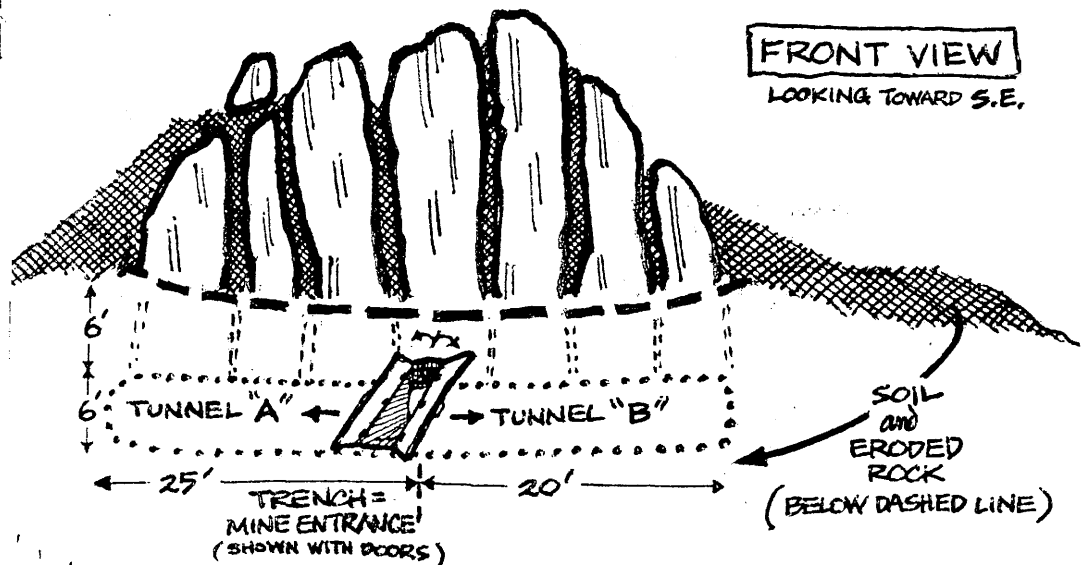
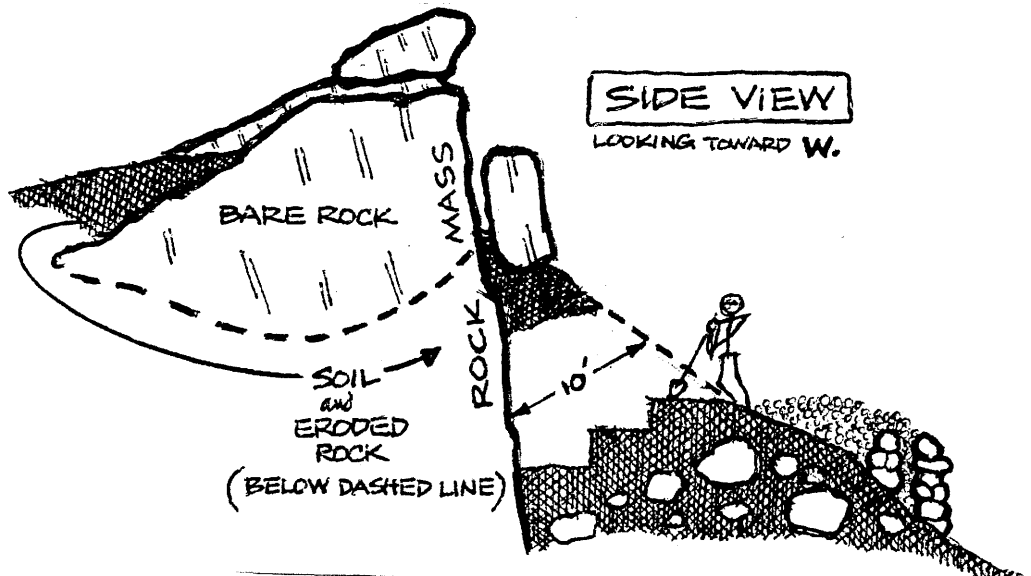
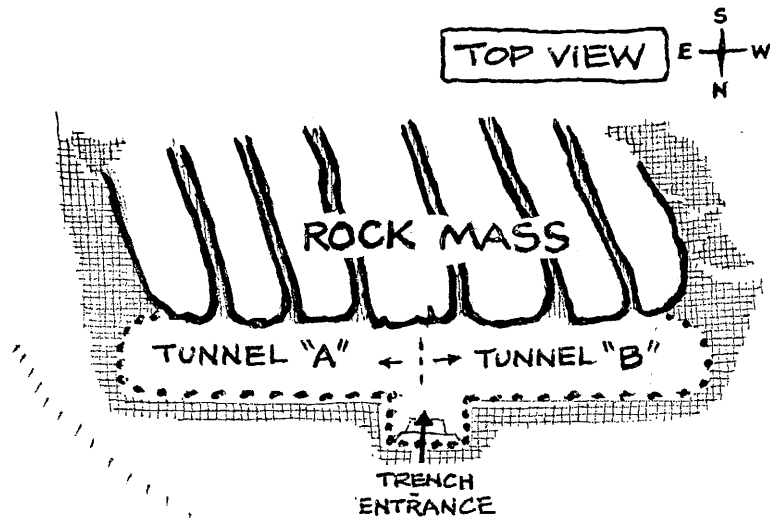


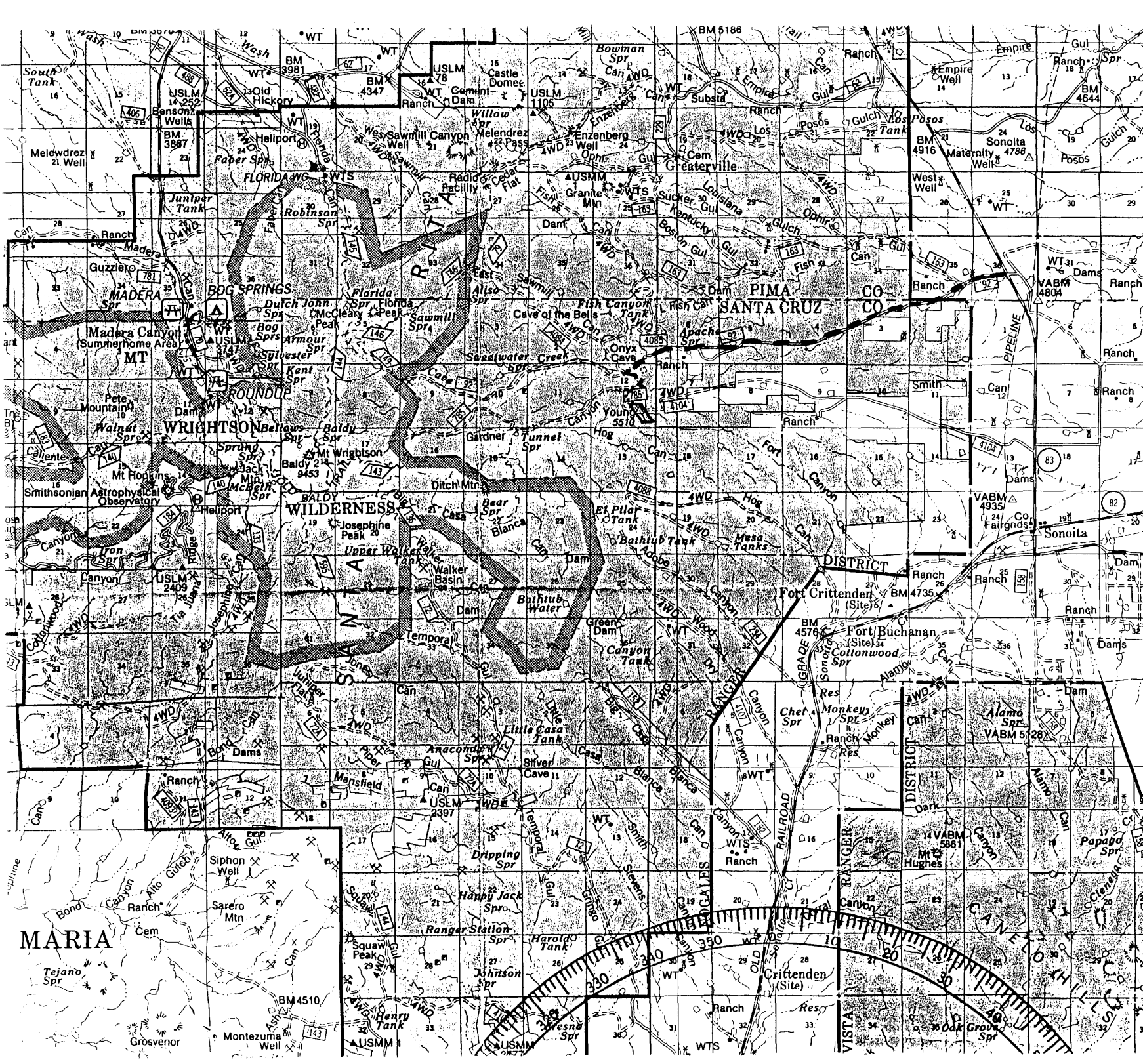
ABOVE MAP
SHOWING:

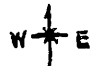
AREA OF PROPOSED
EXCAVATION RELATIVE
TO ENTIRE CLAIM SITE.

- = IN VEHICLE
 - ... = ON FOOT
 - X = PARK VEHICLE
- ACCESS TO CLAIM.

SCALE: Variable/Approximate







 T. 19 S.

HOGWASH LOPE CLAIM - ACCESS TO AND FROM CLAIM SITE
 S 12 / T 20 S / R 15 E
 (FOREST SERVICE MAP)

T. 20 S.
 FAIRBANK 27 MILES

T. 21 S.

31° 45' 00"

3

31° 37' 30"

4

LOCATION NOTICE
(LODE)

⑤

NOTICE IS HEREBY GIVEN that the "HOG WASH" lode mining claim has been located by Iñigo de Martino Jr. whose current mailing address is 1700 N. PARK Ave., TUCSON, AZ. 85719.

The general course of this claim is South Easterly and it is situated in Santa Cruz County, Arizona.

This claim is 1500 feet in length and 600 feet in width. This claim runs from the location monument on which this location notice is posted approximately 750 feet in a N.W. direction to the North end line and 750 feet in a S.E. direction to the South end line. This claim is marked by six monuments, one at each corner and one at the center of each end line of the claim.

The location monument on which this notice is posted is situated within Section 12, T. 20 S., R. 15 E., G&SRM, Arizona, and this claim encompasses portions of the following quarter section(s), Section(s), Township(s) and Range(s): NW-SE, NE-SE, SE-SE/SE ¼ SECTION 12/T20S, R15E, G&SRM, Arizona.

The locality of this claim with reference to some natural object or permanent monument and additional information (if any) concerning its locality are as follows: LOCATION MONUMENT 150' EAST OF: YOUNG VABM 5510

DATED AND POSTED on the ground this 24 day of SEPTEMBER, 1995.

LOCATOR(S):

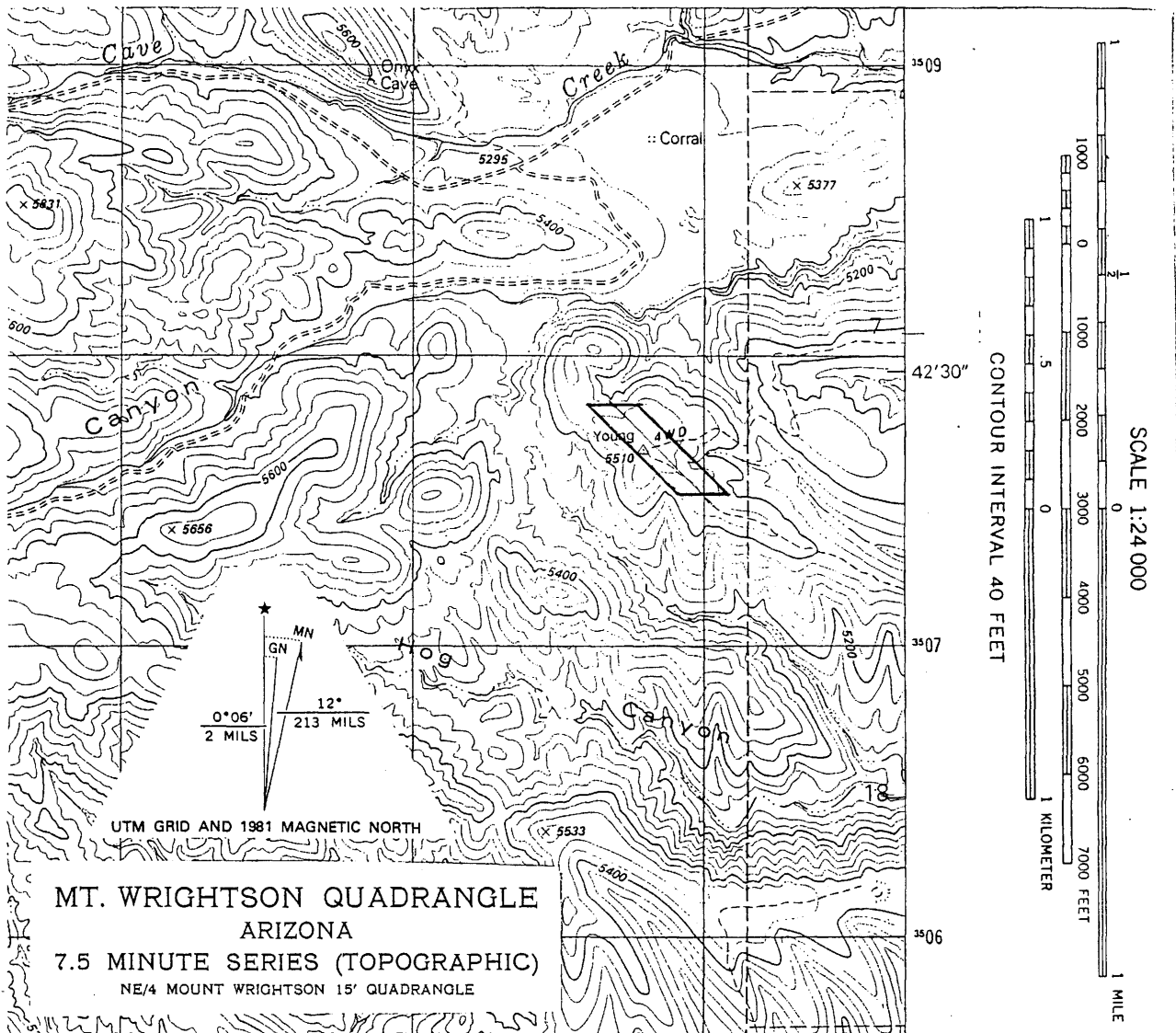
Iñigo de Martino Jr.

CLAIM MAP

VI

Lode
Placer

(✓)



N

Scale: 1:24,000

1. The above map depicts the "HOG WASH" mining claim, which is located in Section (s) 12, Township 20 S, Range 15 E, G&SRM, SANTA CRUZ County, Arizona.

2. The type of corner and location monuments used are as follows:
FIELD ROCK MONUMENTS (7 ea TOTAL)

3. The bearings and distances in degrees and feet between claim corners are as depicted on map.



INSTRUMENT # 9508309
OFFICIAL RECORDS OF
SANTA CRUZ COUNTY
SUZANNE SAINZ
COUNTY RECORDER
REQUEST OF :

DE MARTINO, INIGO JR.

DATE: 11/09/95 TIME: 10.30

FEE: 8.00

DOCK 679 PAGE 542 PAGES: 2

LOCATION NOTICE
(LODE)

MICROFILMED INDEXED

DOCK

679 PAGE 542

NOTICE IS HEREBY GIVEN that the "HOG WASH" lode mining claim has been located by Inigo de Martino Jr. whose current mailing address is 1700 N. PARK Ave., TUCSON, AZ. 85719.

The general course of this claim is South Easterly and it is situated in Santa Cruz County, Arizona.

This claim is 1500 feet in length and 600 feet in width. This claim runs from the location monument on which this location notice is posted approximately 750 feet in a N.W. direction to the North end line and 750 feet in a S.E. direction to the South end line. This claim is marked by six monuments, one at each corner and one at the center of each end line of the claim.

The location monument on which this notice is posted is situated

CLAIM MAP

Lode (✓)
Placer ()

