



## **CONTACT INFORMATION**

Mining Records Curator  
Arizona Geological Survey  
1520 West Adams St.  
Phoenix, AZ 85007  
602-771-1601  
<http://www.azgs.az.gov>  
[inquiries@azgs.az.gov](mailto:inquiries@azgs.az.gov)

The following file is part of the

Arizona Department of Mines and Mineral Resources Mining Collection

## **ACCESS STATEMENT**

These digitized collections are accessible for purposes of education and research. We have indicated what we know about copyright and rights of privacy, publicity, or trademark. Due to the nature of archival collections, we are not always able to identify this information. We are eager to hear from any rights owners, so that we may obtain accurate information. Upon request, we will remove material from public view while we address a rights issue.

## **CONSTRAINTS STATEMENT**

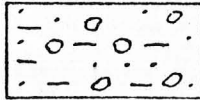
The Arizona Geological Survey does not claim to control all rights for all materials in its collection. These rights include, but are not limited to: copyright, privacy rights, and cultural protection rights. The User hereby assumes all responsibility for obtaining any rights to use the material in excess of "fair use."

The Survey makes no intellectual property claims to the products created by individual authors in the manuscript collections, except when the author deeded those rights to the Survey or when those authors were employed by the State of Arizona and created intellectual products as a function of their official duties. The Survey does maintain property rights to the physical and digital representations of the works.

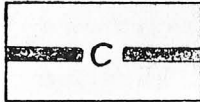
## **QUALITY STATEMENT**

The Arizona Geological Survey is not responsible for the accuracy of the records, information, or opinions that may be contained in the files. The Survey collects, catalogs, and archives data on mineral properties regardless of its views of the veracity or accuracy of those data.

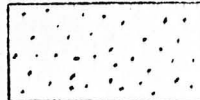
EXPLANATION  
OF ELECTRICAL LOG LITHOLOGIES



Alluvial soils, brown, red brown  
with sand and gravel



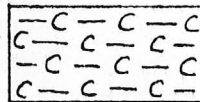
Coal seam



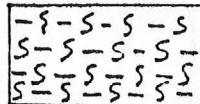
Sandstone, pale orange, brown,  
gray, medium to coarse grained



Shale, gray, brown, olive green,  
yellow



Shale, black, carbonaceous



Siltstone or claystone, pale orange,  
brown, gray, green, blue

M.S. #1

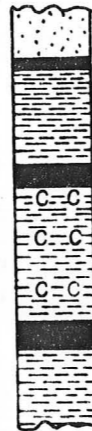
NW 1/4, Sect. 21, T17N, R31W



Sandstone, Pale Orange  
4ft. Shale, Gray  
0.5ft. Coal  
4ft. Shale, Gray  
2.8ft. Coal  
Sandstone, Pale Orange

M.S. #2

Middle of Sect. 26, T17N, R30E



Sandstone, Pale Orange  
0.5ft. Coal  
5ft. Shale, Gray  
1ft. Coal  
7ft. Shale, Gray, Carbonaceous  
1.5ft. Coal  
Shale, Gray

M.S. #3

E 1/4, Sect. 33, T17N, R30E



Sandstone, Pale Orange  
1.5ft. Shale, Pale Orange  
0.75ft. Shale, Light Gray  
4.2ft. Shale, Med. Gray  
0.5ft. Shale, Dk. Gray  
0.25ft. Coal  
14.7ft. Shale, Gray  
1.5ft. Coal  
6.4ft. Shale, Gray  
1.3ft. Coal  
Shale, Gray

M.S. #4

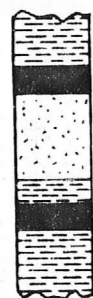
NE 1/4, Sect. 8, T16N, R30E



Sandstone, Pale Orange  
8.5ft. Shale, Gray  
0.5ft. Coal  
6.0ft. Shale, Gray  
0.75ft. Coal  
0.8ft. Shale, Gray  
2ft. Coal  
Shale, Gray

M.S. #5

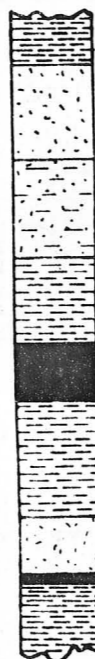
Middle of Sect. 9, T16N, R31E



Shale, Gray  
1.25ft. Coal  
4.6ft. Sandstone, Yellow to Orange  
1.4ft. Shale, Gray  
1.1ft. Coal  
Shale, Gray w/ Gypsum

M.S. #6

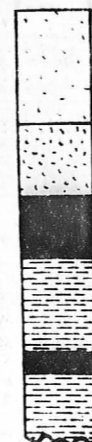
NE 1/4, Sect. 24, T16N, R30E



Shale, Green (Mancos)  
5ft. Sandstone, Pale Orange  
5ft. Sandstone Cross-Bedded w/Shale  
4.5ft. Shale, Dark Gray w/Light Brown Sandstone  
3ft. Coal w/1/2" Shale Parting in Middle  
6ft. Shale, Med. to Dk. Gray w/ Minor Sandstone  
3ft. Sandstone, Light Brown  
0.5ft. Coal  
Shale, Gray

M.S. #7

Middle of Sect. 24, T16N, R30E  
Old Mine Adit



Surface  
6ft. Sandstone, Pale Orange  
4ft. Sandstone, Massive  
3ft. Coal - Pinches to 2ft. Within 100ft. Along Strike - 2-6" Ash Part.  
5ft. Shale Interbedded w/Sandstone  
0.5 to 1ft. Coal Pinches Out Nearby  
Shale, Gray

M.S. #8

Middle of Western Half of Sect. 24, T16N, R30E



Shale, Gray-Green Fossiliferous at Base  
6ft. Sandstone, Massive, Cross-Bedded, Orange  
4ft. Shale and Sandstone  
2ft. Shale, Dark Gray  
0.5ft. Coal  
1.5ft. Shale, Dark Gray  
1ft. Coal  
1.5ft. Shale, Dark Gray  
Sandstone, Massive, Orange

SALT RIVER PROJECT  
COAL STUDY

MEASURED SECTIONS  
HINKSON RANCH

DRAWN BY: B. Rush	SCALE: Vert. 1" = 10'	EXHIBIT No.
DESIGN BY: P. R.	DATE: March 5, 1975	3
APPROVED BY: J.B.	DWG. No. 1025-8-0501	

MORRISON-KNUDSEN COMPANY, INC.

DATE 27 Jan 1975

AREA N. ZUNI

COUNTY Apache

STATE ARIZONA

COMPANY MK

DATE 28 JAN 75

TOTAL FEET LOGGED 220

LOCATION 217

DRIVE

STANDBY

LOGGING

TOTAL

ROUNDTRIP MILEAGE

CHARGEABLE STANDBY

LOG MEASURE FROM

LOG MEASURE FROM

LOG MEASURE FROM

LOG MEASURE FROM

LOG MEASURE FROM

LOG MEASURE FROM

LOG MEASURE FROM

LOG MEASURE FROM

LOG MEASURE FROM

LOG MEASURE FROM

LOG MEASURE FROM

LOG MEASURE FROM

LOG MEASURE FROM

LOG MEASURE FROM

LOG MEASURE FROM

LOG MEASURE FROM

LOG MEASURE FROM

LOG MEASURE FROM

LOG MEASURE FROM

LOG MEASURE FROM

LOG MEASURE FROM

LOG MEASURE FROM

LOG MEASURE FROM

LOG MEASURE FROM

LOG MEASURE FROM

LOG MEASURE FROM

LOG MEASURE FROM

LOG MEASURE FROM

LOG MEASURE FROM

LOG MEASURE FROM

LOG MEASURE FROM

LOG MEASURE FROM

LOG MEASURE FROM

LOG MEASURE FROM

LOG MEASURE FROM

LOG MEASURE FROM

LOG MEASURE FROM

LOG MEASURE FROM

LOG MEASURE FROM

LOG MEASURE FROM

LOG MEASURE FROM

LOG MEASURE FROM

LOG MEASURE FROM

LOG MEASURE FROM

LOG MEASURE FROM

LOG MEASURE FROM

LOG MEASURE FROM

LOG MEASURE FROM

LOG MEASURE FROM

LOG MEASURE FROM

LOG MEASURE FROM

LOG MEASURE FROM

LOG MEASURE FROM

COMPANY SALT RIVER PROJECT - M-K

BORE HOLE SR752

AREA N. ZUNI

COUNTY APACHE

STATE ARIZONA

SECTION addc 17

TOWNSHIP T17N

RANGE R31E

LOG MEASURE FROM C. EICH 6135'

INITIAL RUN

T. D. LOGGED 220

SCALE 200

GAMMA (FULL SCALE) 1000

TIME CONSTANT 2

LOGGING SPEED 10

CALIBRATION 800

SOURCE NO CS137

PROBE SIZE 1 1/2

RES (FULL SCALE) 20

S.P.

SCALE 200

T.C. 2.0

LOGGING SPEED 10

FROM 0

TO 220

TOTAL 220'

SCALE

T.C.

LOGGING SPEED

FROM

TO

TOTAL

SCALE

T.C.

LOGGING SPEED

FROM

TO

TOTAL

SCALE

T.C.

LOGGING SPEED

FROM

TO

TOTAL

SCALE

T.C.

LOGGING SPEED

FROM

TO

TOTAL

SCALE

T.C.

LOGGING SPEED

FROM

TO

TOTAL

SCALE

T.C.

LOGGING SPEED

FROM

TO

TOTAL

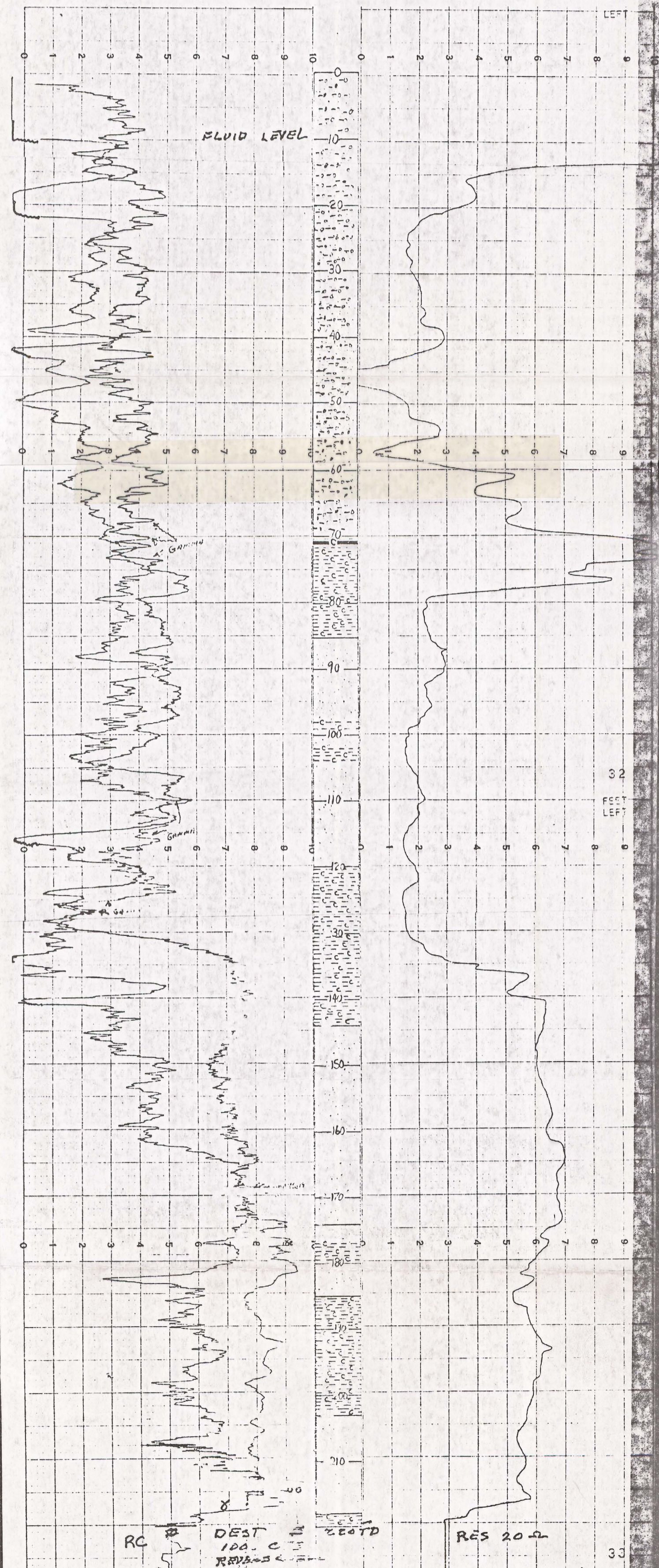
SCALE

T.C.

LOGGING SPEED

SELF POTENTIAL  
NATURAL GAMMA RAY  
COUNTS PER SECOND

CALIPER  
RESISTANCE  
OHMS



RC DEST 100. C  
REVISED

RES 20-2

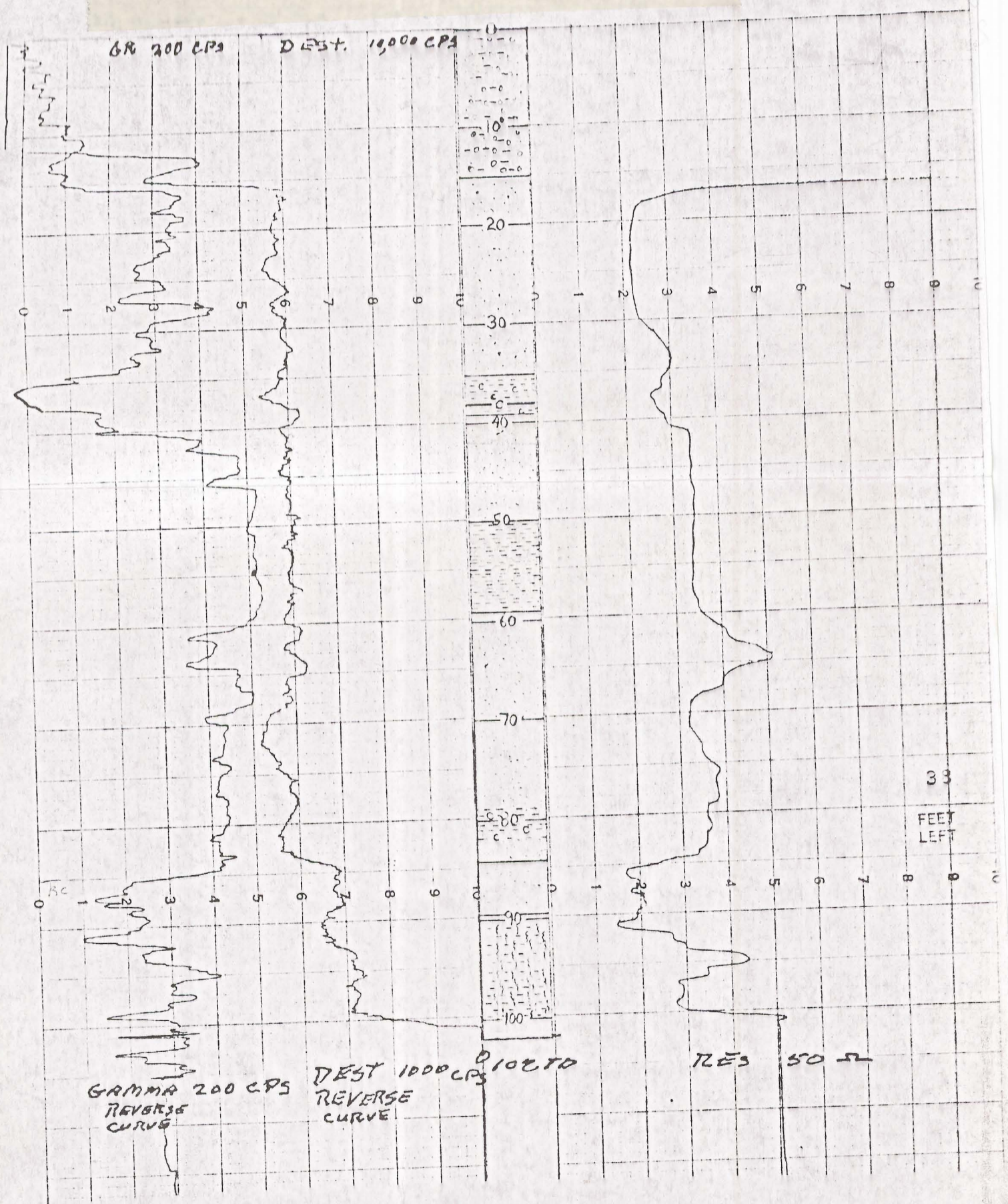
SR751 102  
 SLT TWT RANGE BIT SIZE IN CASING  
 AREA NORTH ZUNI  
 COUNTY Apache  
 STATE ARIZONA  
 COMPANY M.K.  
 DATE 26 JAN 75  
 TOTAL FEET LOGGED 102  
 OPERATOR PARKER  
 UNIT NO 217

DATE 26 Jan 1975  
 COMPANY SALT RIVER PROJECT-M-K  
 BORE HOLE SR751  
 AREA N. ZUNI  
 COUNTY APACHE STATE ARIZONA  
 SECTION bbd 21 TOWNSHIP T17N RANGE R31E LOG MEASURE FROM C. Elev. 6014'  
 DRIVE  
 TIME IN HRS  
 TIME OUT HRS

T D LOGGED		SCALE		SCALE		SCALE		STANDBY		TIME IN	
102	1000	200	2	10	102	0	102				
GAMMA (FULL SCALE)		T C		LOGGING SPEED		T C		LOGGING SPEED		LOGGING	
TIME CONSTANT		FROM		FROM		FROM		FROM		TOTAL	
LOGGING SPEED		TO		TO		TO		TO		ROUNDTrip MILEAGE	
CALIBRATION		TOTAL		TOTAL		TOTAL		TOTAL		CHARGEABLE STANDBY	

SOURCE NO CS137 SOURCE VALUE 115 MIC  
 PROBE SIZE 1 1/2 IN  
 RES (FULL SCALE) 50 OHMS  
 S P MV/IN

SELF POTENTIAL  
 - | +  
 NATURAL GAMMA RAY  
 COUNTS PER SECOND  
 CALIPER  
 RESISTANCE  
 OHMS



DATE 29 Jan. 1975

COMPANY SALT RIVER PROJECT - M-K  
BORE HOLE SR 753  
AREA N. ZUNI  
COUNTY APACHE

AREA N. ZUNI  
COUNTY APACHE  
STATE ARIZONA  
COMPANY MK  
DATE 28 JAN 75  
TOTAL FEET LOGGED 100'

SECTION dadd 21 TOWNSHIP T17N RANGE R31E G. Elev. 6050'

INITIAL RUN		GAMMA RERUNS (INITIAL RUN OFF SCALE)				DRIVE		TIME IN	
T D LOGGED	SCALE	SCALE	SCALE	SCALE	STANDBY	LOGGING	HRS	TIME OUT	HRS
100'	20								
GAMMA (FULL SCALE)	FT	CPS	LOGGING SPEED	T C	LOGGING SPEED	T C	LOGGING SPEED	LOGGING	HRS
1000	2								
TIME CONSTANT	SEC	FROM	SEC	FT MIN	FROM	SEC	FT MIN	TOTAL	HRS
.2	100								
LOGGING SPEED	FT MIN	TO	FT	TO	FT	TO	FT	ROUNDRIP MILEAGE	MILES
10	0								
CALIBRATION	TOTAL	TOTAL	TOTAL	TOTAL	TOTAL	TOTAL	TOTAL	CHARGEABLE STANDBY	HRS
800	100								

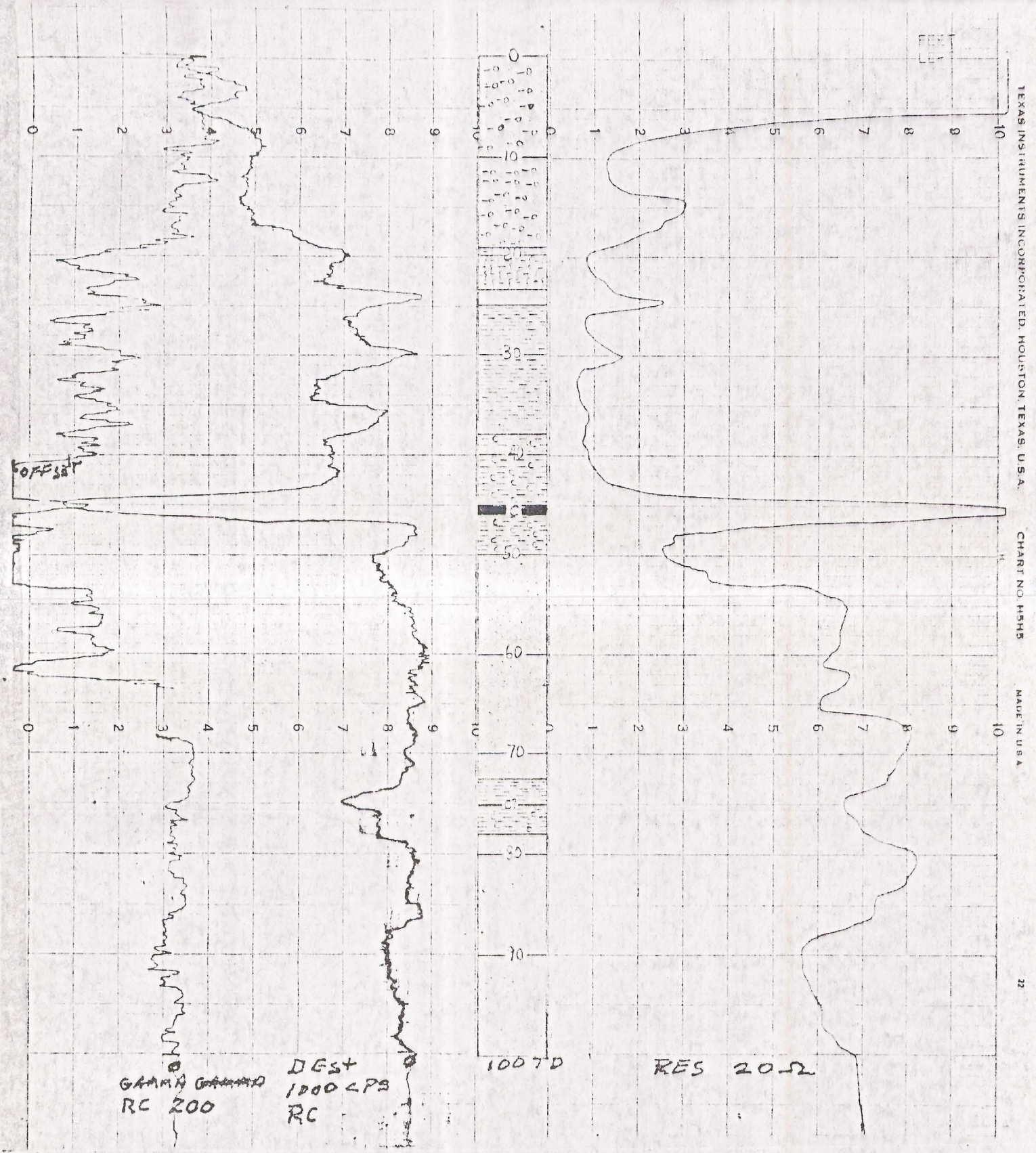
SOURCE NO CS137 SOURCE VALUE 125 MC  
PROBE SIZE 1 1/2 IN  
RES (FULL SCALE) 20 OHMS  
S. P. MV/IN

SELF POTENTIAL

CALIPER

NATURAL GAMMA RAY COUNTS PER SECOND

RESISTANCE OHMS



DATE 30 Jan 1975

AREA N. ZUNI

COMPANY SALT RIVER PROJECT - M-K

COUNTY APACHE

BORE HOLE SR754

STATE ARIZONA

AREA N. ZUNI

COMPANY M. H.

COUNTY APACHE

STATE ARIZONA

DATE 30 JAN 75

UNIT NO 217

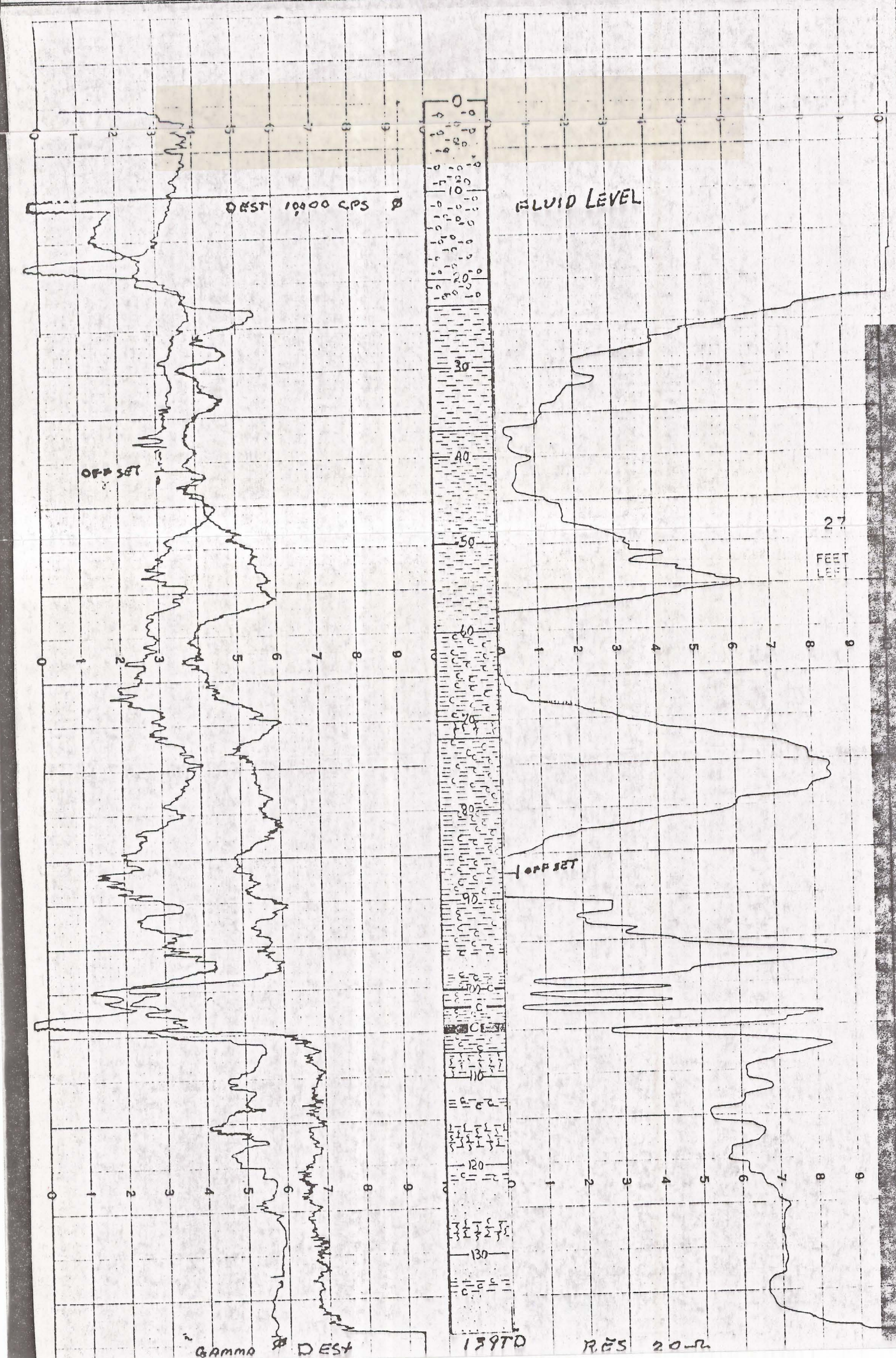
SECTION dba 19 TOWNSHIP T17N RANGE R31E LOG MEASUREMENT FROM C. Elev. 6102'

TOTAL FEET LOGGED 139'

LOCATION

INITIAL RUN		GAMMA RERUNS (INITIAL RUN OFFSCALE)				DRIVE	TIME IN
T. D. LOGGED	SCALE	SCALE	SCALE	SCALE	STANDBY	TIME OUT	
139	200						
GAMMA (FULL SCALE)	T. C.	LOGGING SPEED	T. C.	LOGGING SPEED	LOGGING		
1000	2. SEC	FT/MIN	SEC	FT/MIN	SEC	HRS	
TIME CONSTANT	FROM	FROM	FROM	FROM	TOTAL		
.2	139	FT	FT	FT	FT	HRS	
LOGGING SPEED	TO	TO	TO	TO	ROUNDTRIP MILEAGE	M	
10	0	FT	FT	FT	FT		
CALIBRATION	TOTAL	TOTAL	TOTAL	TOTAL	CHARGEABLE STANDBY	H	
800	139						
SOURCE NO	SOURCE VALUE						
CS137	115 MC						
PROBE SIZE							
14							
RES (FULL SCALE)							
20							
S. P.							

SELF POTENTIAL CALIPER  
NATURAL GAMMA RAY COUNTS PER SECOND RESISTANCE OHMS



UNITED LOGGING, INC.  
 P. O. Box 1932  
 ALICE, TEXAS 78332  
 664-6085

HOLE NO. **SR-755**  
 T D DRILLED **23 2.4**  
 BIT SIZE **2 1/2** IN CASING

DATE **31 Jan. 1975**

AREA **North ZUNI**  
 BORE HOLE FLUID

COMPANY **SALT RIVER PROJECT - M-K**

COUNTY **Apache**  
 DENSITY

BORE HOLE **SR 755**

STATE **ARIZONA**  
 RESISTIVITY

AREA **N. ZUNI**

COMPANY **M K**  
 OPERATOR **PARKER**

COUNTY **APACHE**

DATE **31 JAN 75**  
 UNIT NO **217**

SECTION **bad, 23**

TOTAL FEET LOGGED **232**  
 LOCATION

TOWNSHIP **T17N**

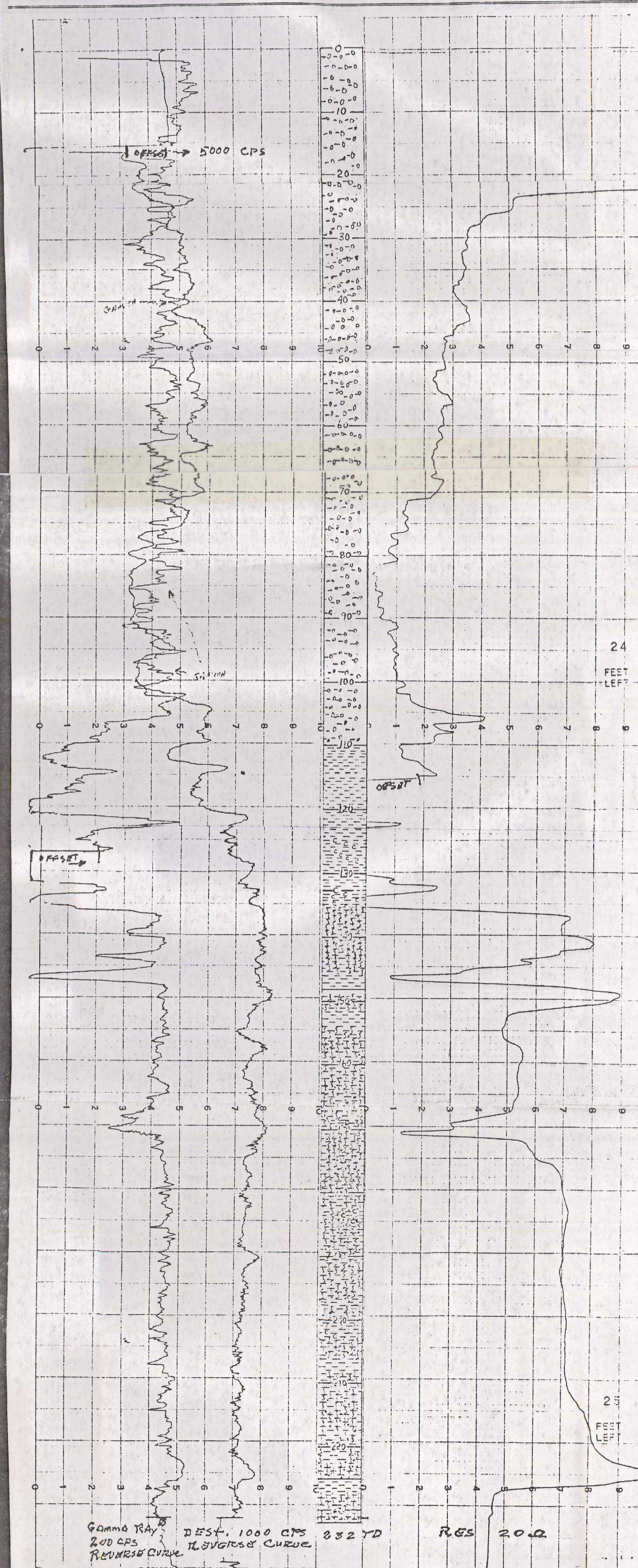
RANGE **R30E**

LOG MEASURE FROM **C. Elev. 6129**

INITIAL RUN		SCALE		SCALE		SCALE		SCALE		DRIVE		TIME IN	
T D LOGGED	FT	FT	Cps	FT	Cps	FT	Cps	FT	Cps	STANDBY	HRS	TIME OUT	HRS
232		200											
GAMMA FULL SCALE		T. C.	LOGGING SPEED	T. C.	LOGGING SPEED	T. C.	LOGGING SPEED	T. C.	LOGGING SPEED	LOGGING			
1000		2	FT/MIN							TOTAL			
TIME CONSTANT		FROM	TO	FROM	TO	FROM	TO	FROM	TO	ROUNDTRIP MILEAGE			
.2		0	232							CHARGEABLE STANDBY			
LOGGING SPEED		FT./MIN	FT	FT	FT	FT	FT	FT	FT	M			
10			0							H			
CALIBRATION		TOTAL	TOTAL	TOTAL	TOTAL	TOTAL	TOTAL	TOTAL	TOTAL				
800		232											
SOURCE NO	SOURCE VALUE												
CS137	115 MC												
PROBE SIZE													
1 1/2													
RES. (FULL SCALE)													
20 Ω													
S. P.													

SELF POTENTIAL  
 - | mv | +  
 NATURAL GAMMA RAY  
 COUNTS PER SECOND

CALIPER  
 RESISTANCE  
 OHMS





HOLE NO <b>SR-756</b>		T D DRILLED <b>149.1</b>	
SEC	TWP	RANGE	BIT SIZE
AREA <b>N ZUNI</b>		BORE HOLE IN FLUID	
COUNTY <b>APACHE</b>		DENSITY	VISCOSITY
STATE <b>ARIZONA</b>		RESISTIVITY	
COMPANY <b>M K</b>		OPERATOR <i>Paul</i>	
DATE <b>3 Feb 75</b>		UNIT NO <b>217</b>	
TOTAL FEET LOGGED <b>149.1</b>		LOCATION	

DATE **3 Feb 75**

COMPANY **SALT RIVER PROJECT - M-K**

BORE HOLE **SR 756**

AREA **N. ZUNI**

COUNTY **APACHE** STATE **ARIZONA**

SECTION **09 33** TOWNSHIP **T 17 N** RANGE **R 30 E** LOG MEASURE FROM **C. Elev. 6105'**

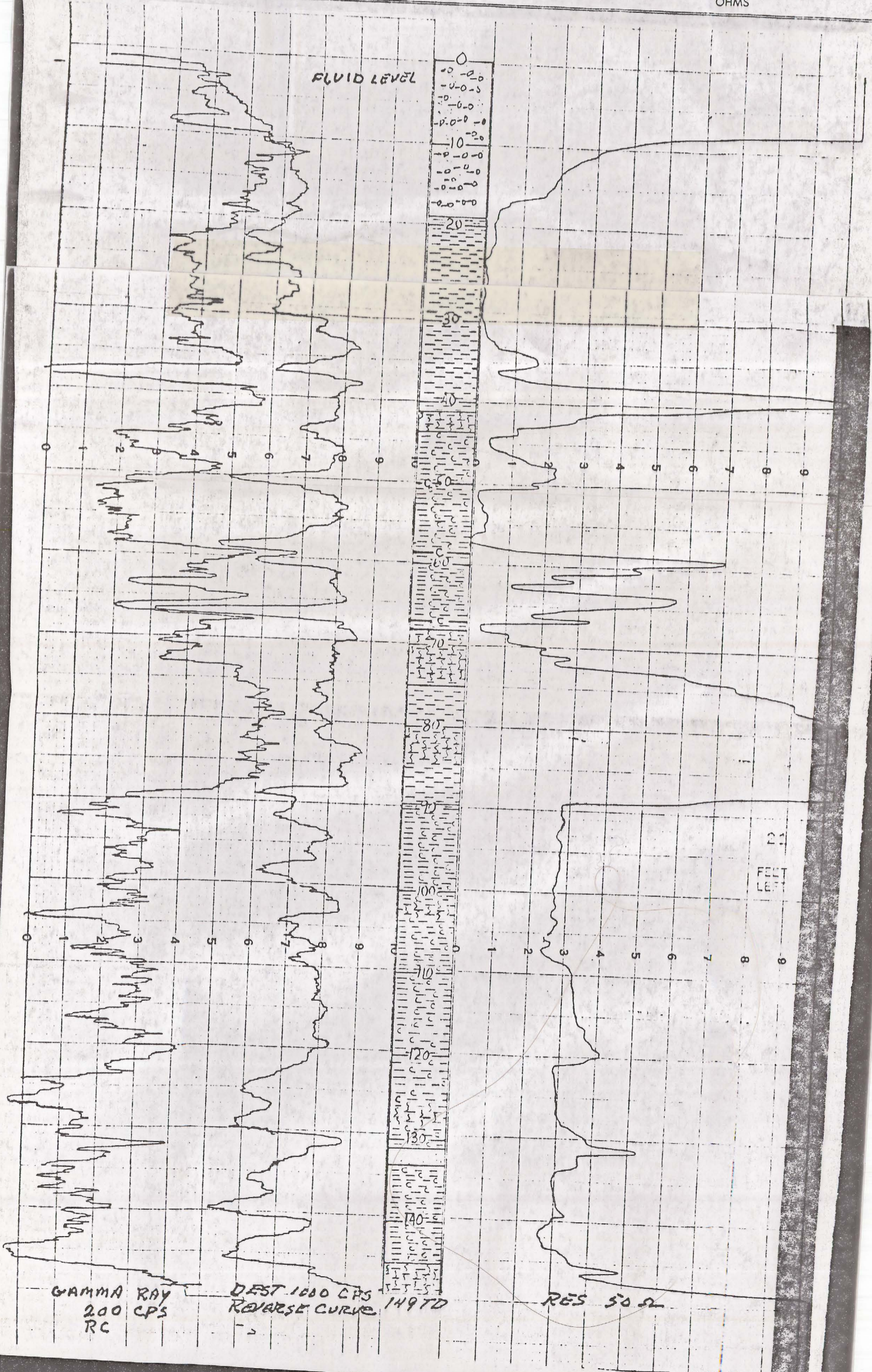
INITIAL RUN		SCALE		GAMMA RERUNS (INITIAL RUN OFFSCALE)		SCALE		DRIVE	TIME IN
T D LOGGED	<b>149.1</b>	FT	<b>200</b>	CPS		CPS		HRS	
GAMMA (FULL SCALE)	<b>1800</b>	T C	<b>2. SEC</b>	LOGGING SPEED	<b>10 FT/MIN</b>	T C		STANDBY	TIME OUT
TIME CONSTANT	<b>.2</b>	FROM		FROM		FROM		LOGGING	HRS
LOGGING SPEED	<b>10</b>	TO	<b>149.1</b>	TO		TO		TOTAL	HRS
CALIBRATION	<b>800</b>	TOTAL	<b>0</b>	TOTAL		TOTAL		ROUNDRIP MILEAGE	MI
SOURCE NO	<b>CS137</b>	SOURCE VALUE	<b>115 MC</b>					CHARGEABLE STANDBY	H
PROBE SIZE	<b>1/4</b>								
RES (FULL SCALE)	<b>50</b>								
S P									

SELF POTENTIAL  
 - | +  
 MV

NATURAL GAMMA RAY  
 COUNTS PER SECOND

CALIPER

RESISTANCE  
 OHMS



GAMMA RAY  
 200 CPS  
 RC

DEST 1000 CPS  
 REVERSE CURVE 149 TD

RES 50 OH

DATE **4 Feb 1975**

COMPANY **SALT RIVER PROJECT  
M-K**

BORE HOLE **SR 757**

AREA **N. ZUNI**

COUNTY **APACHE**

STATE **ARIZONA**

SECTION **CCO 31** TOWNSHIP **T7N** RANGE **R30E** LOG MEASURE FROM **C. Elev. 6211**

AREA **N ZUNI**

COUNTY **APACHE**

STATE **ARIZONA**

COMPANY **M K**

DATE **4 Feb 75**

TOTAL FEET LOGGED **141**

BORE HOLE FLUID

DENSITY

RESISTIVITY

OPERATOR **PARKER**

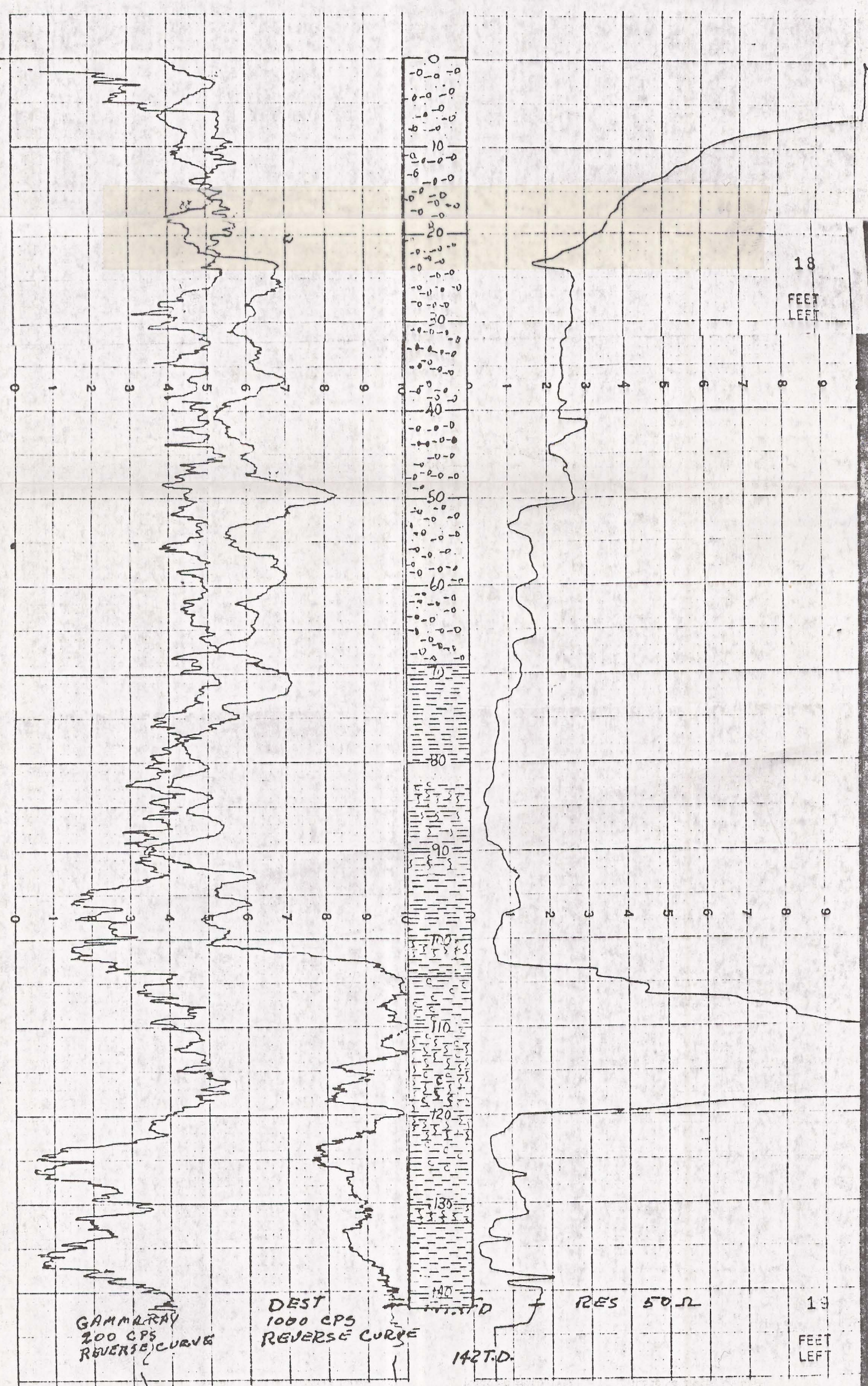
UNIT NO **217**

LOCATION

INITIAL RUN		GAMMA RERUNS (INITIAL RUN OFFSCALE)				DRIVE	TIME IN
T. LOGGED	SCALE	SCALE	SCALE	SCALE	STANDBY	HRS	TIME OUT
<b>141.9</b>	<b>200</b>						
GAMMA (FULL SCALE)	T. C.	LOGGING SPEED	T. C.	LOGGING SPEED	LOGGING		
<b>1000</b>	<b>2. SEC</b>	<b>10 FT/MIN</b>					
TIME CONSTANT	FROM	FROM	FROM	FROM	TOTAL		
<b>.2</b>	<b>141</b>						
LOGGING SPEED	TO	TO	TO	TO	ROUNDTRIP MILEAGE		
<b>10</b>	<b>0</b>						
CALIBRATION	TOTAL	TOTAL	TOTAL	TOTAL	CHARGEABLE STANDBY		
<b>900</b>	<b>141</b>						
SOURCE NO	SOURCE VALUE						
<b>C5137</b>	<b>115 MC</b>						
PROBE SIZE							
<b>1/4</b>							
RES. (FULL SCALE)							
<b>50</b>							
S. P.							

SELF POTENTIAL  
NATURAL GAMMA RAY  
COUNTS PER SECOND

CALIPER  
RESISTANCE  
OHMS



GAMMA RAY  
200 CPS  
REVERSE CURVE

DEST  
1000 CPS  
REVERSE CURVE

RES 50 OHMS

142 D.

18  
FEET  
LEFT

19  
FEET  
LEFT

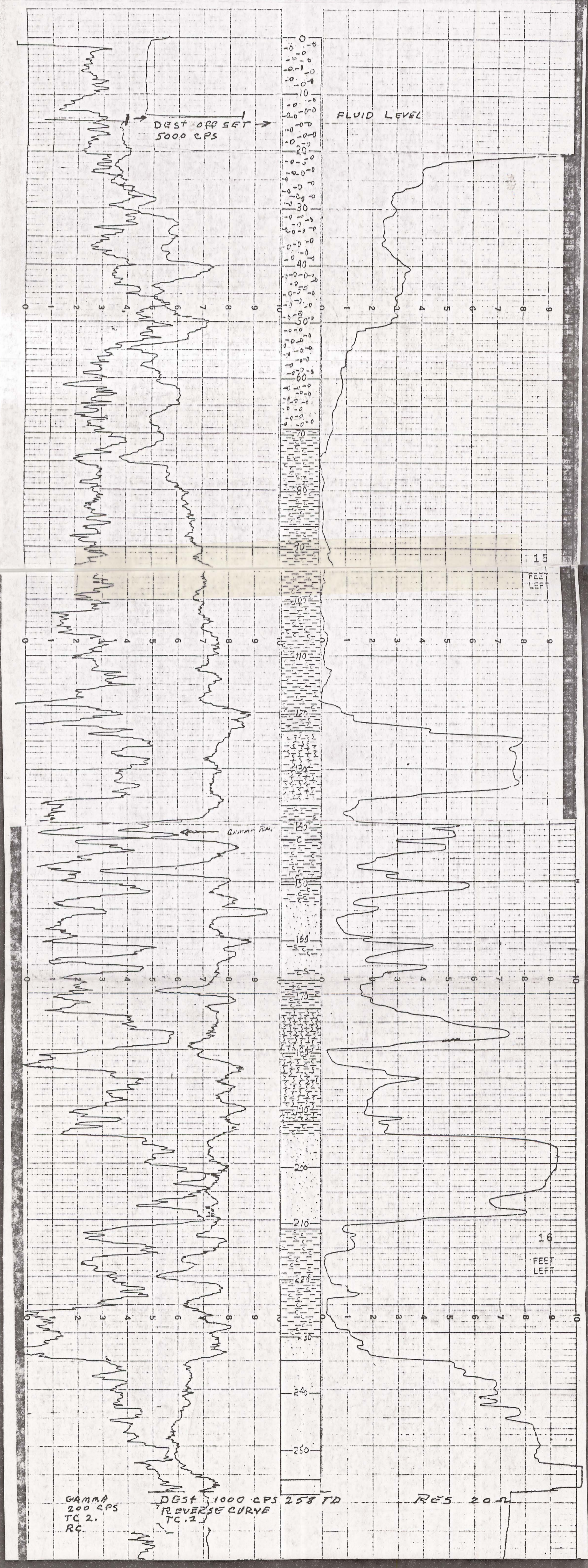
DATE 5 Feb. 1975

COMPANY SALT RIVER PROJECT - M-K		AREA South ZUNI		BORE HOLE FLUID	
BORE HOLE SR 758		COUNTY APACHE		DENSITY	
AREA S. ZUNI		STATE ARIZONA		RESISTIVITY	
COUNTY APACHE		STATE ARIZONA		OPERATOR PARKER	
SECTION d4b 30		TOWNSHIP T16N		DATE 5 Feb 74	
RANGE R31E		LOG MEASURE FROM C. ELEV. 6382 Ft.		TOTAL FEET LOGGED 258	
INITIAL RUN		GAMMA RUNS (INITIAL RUN OFFSCALE)		DRIVE	

T. D. LOGGED	SCALE	SCALE	SCALE	STANDBY	TIME IN
758	200				
GAMMA (FULL SCALE)	T. C.	LOGGING SPEED	T. C.	LOGGING SPEED	LOGGING
1000	2.0	10 FT/MIN			
TIME CONSTANT	FROM	TO	FROM	TO	TOTAL
.2		258			
LOGGING SPEED	FT/MIN	FT	FT	FT	HRS
10		0			
CALIBRATION		TOTAL	TOTAL	TOTAL	CHARGE LE
800		258			STANDBY
SOURCE NO CS137	SOURCE VALUE 115MC				
PROBE SIZE 1 1/4	IN.				
RES. (FULL SCALE) 20	OHMS				
S. P.	MV/IN				

SELF POTENTIAL  
NATURAL GAMMA RAY  
COUNTS PER SECOND

CALIPER  
RESISTANCE  
OHMS



UNITED LOGGING, INC.  
 P. O. Box 1932  
 ALICE, TEXAS 73332  
 664-6085

HOLE NO <b>SR-759</b>			T D DRILLED <b>84.5</b>	
SEC	TWP	RANGE	SIT SIZE	CASING
DATE <b>5-6 Feb 1975</b>			AREA <b>South Zuni</b>	
COMPANY <b>SALT RIVER PROJECT - M-K</b>			BORE HOLE FLUID	
BORE HOLE <b>SR 759</b>			DENSITY	
AREA <b>S. ZUNI</b>			VISCOSITY	
COUNTY <b>APACHE</b>			STATE <b>ARIZONA</b>	
STATE <b>ARIZONA</b>			RESISTIVITY	
LOG MEASURE FROM <b>C Elev. 6252'</b>			OPERATOR <b>THORNER</b>	
SECTION <b>acbb 3</b>			DATE <b>6 Feb 75</b>	
TOWNSHIP <b>T15N</b>			TOTAL FEET LOGGED <b>84</b>	
RANGE <b>R30E</b>			UNIT NO <b>217</b>	
LOG MEASURE FROM <b>C Elev. 6252'</b>			LOCATION	

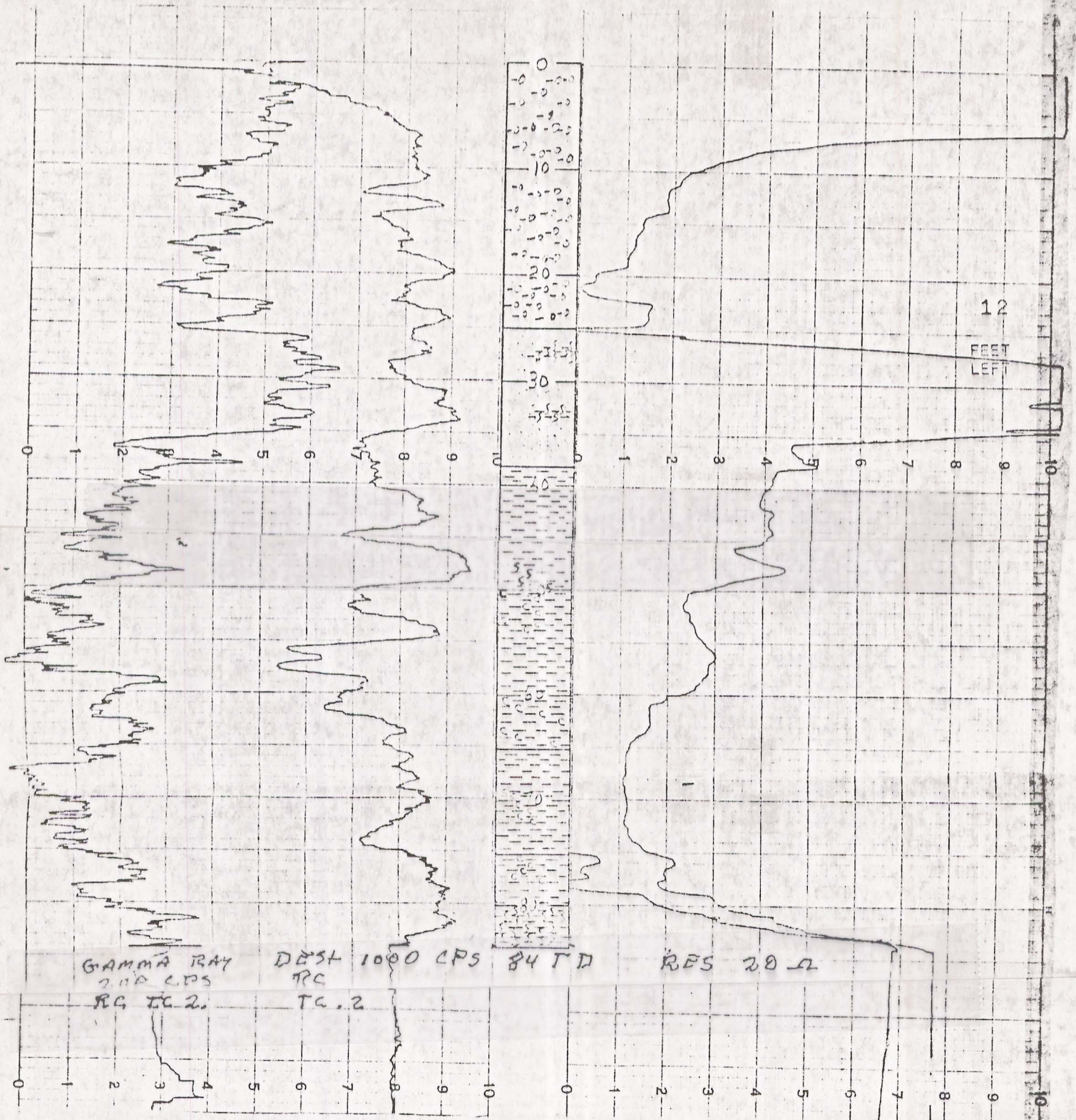
INITIAL RUN		GAMMA RUNS (INITIAL RUN OFFSCALE)						DRIVE	TIME IN
T. D. LOGGED	SCALE	SCALE	SCALE	SCALE	SCALE	SCALE	STANDBY	TIME OUT	
GAMMA (FULL SCALE)	FT	T. C.	LOGGING SPEED	T. C.	LOGGING SPEED	T. C.	LOGGING		
TIME CONSTANT	CPS	SEC	FT / MIN	SEC	FT / MIN	SEC	FT / MIN	HRS	
LOGGING SPEED	SEC	FROM	FT	FROM	FT	FROM	FT	HRS	
CALIBRATION	TOTAL	TOTAL	FT	TOTAL	FT	TOTAL	FT	MILES	
84	200	2.0	10	84	0	84			
1000									
.2									
10									
800									
SOURCE NO <b>CS137</b>	SOURCE VALUE <b>115 MC</b>								
PROBE SIZE <b>1/4</b>	IN.								
RES. (FULL SCALE) <b>20</b>	OHMS								
S. P.	MV/IN								

SELF POTENTIAL

CALIPER

NATURAL GAMMA RAY  
COUNTS PER SECOND

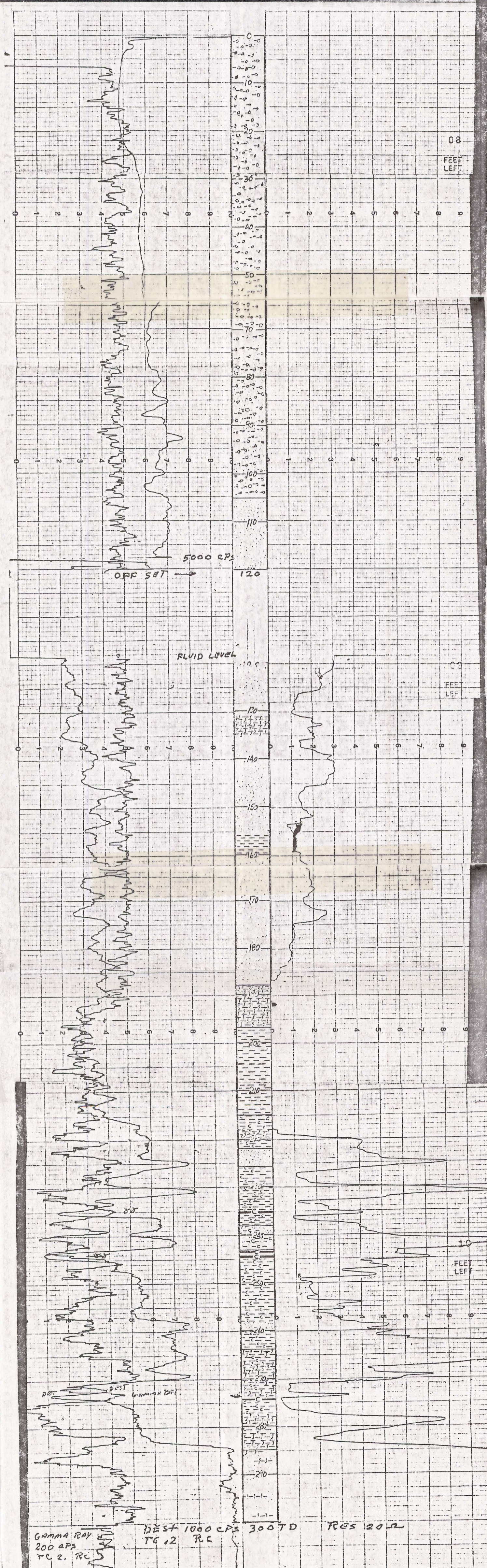
RESISTANCE  
OHMS



DATE <b>6 Feb 1975</b>		AREA <b>South ZUNI</b>	BORE HOLE FLUID
COMPANY <b>SALT RIVER PROJECT - M-K</b>		COUNTY <b>Apache</b>	DENSITY
BORE HOLE <b>SR 7510</b>		STATE <b>ARIZONA</b>	RESISTIVITY
AREA <b>S. ZUNI</b>		LOG MEASURE FROM <b>C. Elev. 5535'</b>	OPERATOR <b>PARKER</b>
COUNTY <b>APACHE</b>	TOWNSHIP <b>T15N</b>	RANGE <b>R31E</b>	DATE <b>7 Feb 75</b>
SECTION <b>0600 5</b>		TOTAL FEET LOGGED <b>300</b>	
INITIAL RUN		GAMMA RERUNS (INITIAL RUN OFFSCALE)	
T. D. LOGGED <b>300</b>	SCALE <b>200</b>	SCALE	SCALE
GAMMA (FULL SCALE) <b>1000</b>	T. C. <b>2.0</b>	LOGGING SPEED <b>10</b>	T. C.
TIME CONSTANT <b>.2</b>	FROM <b>300</b>	FROM	FROM
LOGGING SPEED <b>10</b>	TO	TO	TO
CALIBRATION <b>800</b>	TOTAL <b>300</b>	TOTAL	TOTAL
SOURCE NO. <b>CS137</b>	SOURCE VALUE <b>115 MC</b>		
PROBE SIZE <b>1 1/4</b>	IN.		
RES. (FULL SCALE) <b>20</b>	OHMS		
S. P.	MV/IN		

SELF POTENTIAL  
- | +  
NATURAL GAMMA RAY  
COUNTS PER SECOND

CALIPER  
RESISTANCE  
OHMS



GAMMA RAY  
200 CPS  
TC 2. RC

BEST 1000 CPS 300 TD  
TC 2. RC

RES 20R

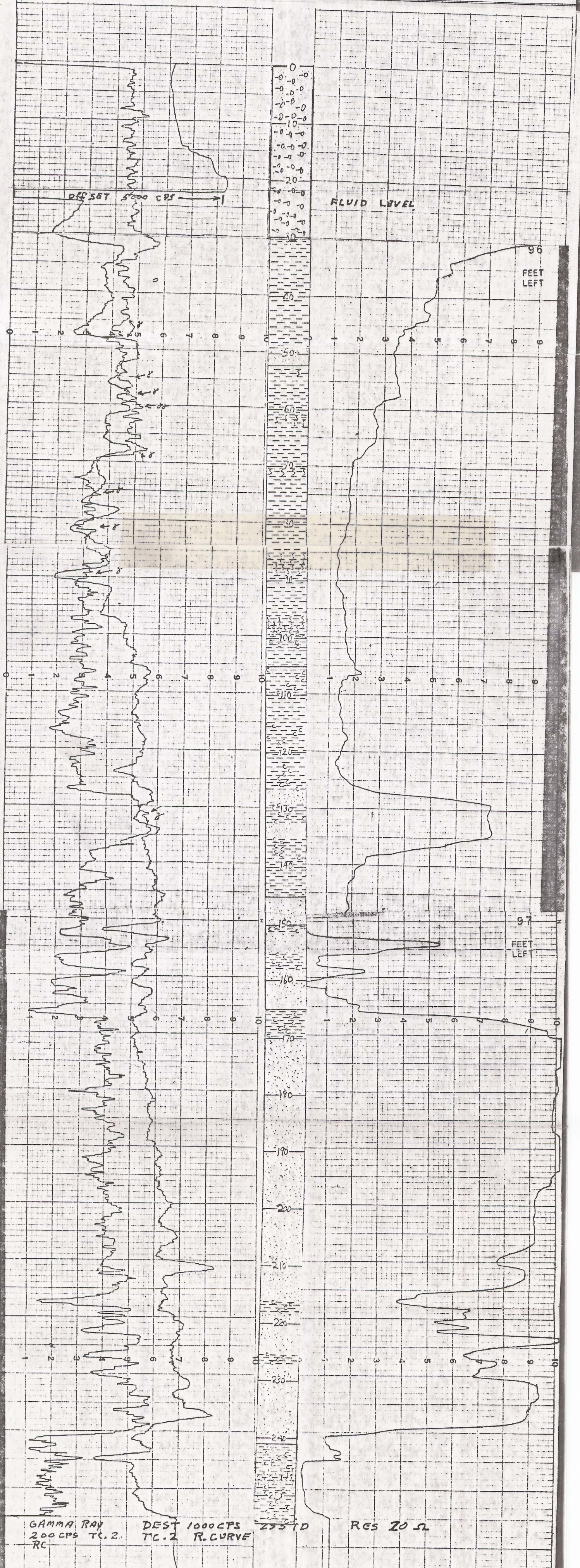
DATE 7-8 Feb. 1975

COMPANY SALT RIVER PROJECT - M-K  
 BORE HOLE SR7512  
 AREA S. 20N1  
 COUNTY VALENCIA STATE NEW MEXICO  
 SECTION 10 TOWNSHIP T6N RANGE K31W LOG MEASURE FROM C. Elev. 6378'  
 COMPANY 20 MEXICO  
 DATE 8 Feb 75  
 TOTAL FEET LOGGED 255'

INITIAL RUN		GAMMA RERUNS (INITIAL RUN OFFSCALE)				DRIVE	TIME IN
FEET LOGGED	255	SCALE	200	SCALE	SCALE	HRS	TIME IN
GAMMA (FULL SCALE)	1000	T. C.	2	LOGGING SPEED	T. C.	LOGGING SPEED	LOGGING
TIME CONSTANT	.2	FROM	255	FROM	FROM	FROM	TOTAL
LOGGING SPEED	10	TO	0	TO	TO	TO	ROUNDTRIP MILEAGE
CALIBRATION	800	TOTAL	255	TOTAL	TOTAL	TOTAL	CHARGEABLE STANDBY
SOURCE NO.	CS137	SOURCE VALUE	115 MC				
PROBE SIZE	1/4						
RES. (FULL SCALE)	20 Ω						

SELF POTENTIAL  
 - | mv | +  
 NATURAL GAMMA RAY  
 COUNTS PER SECOND

CALIPER  
 RESISTANCE  
 OHMS

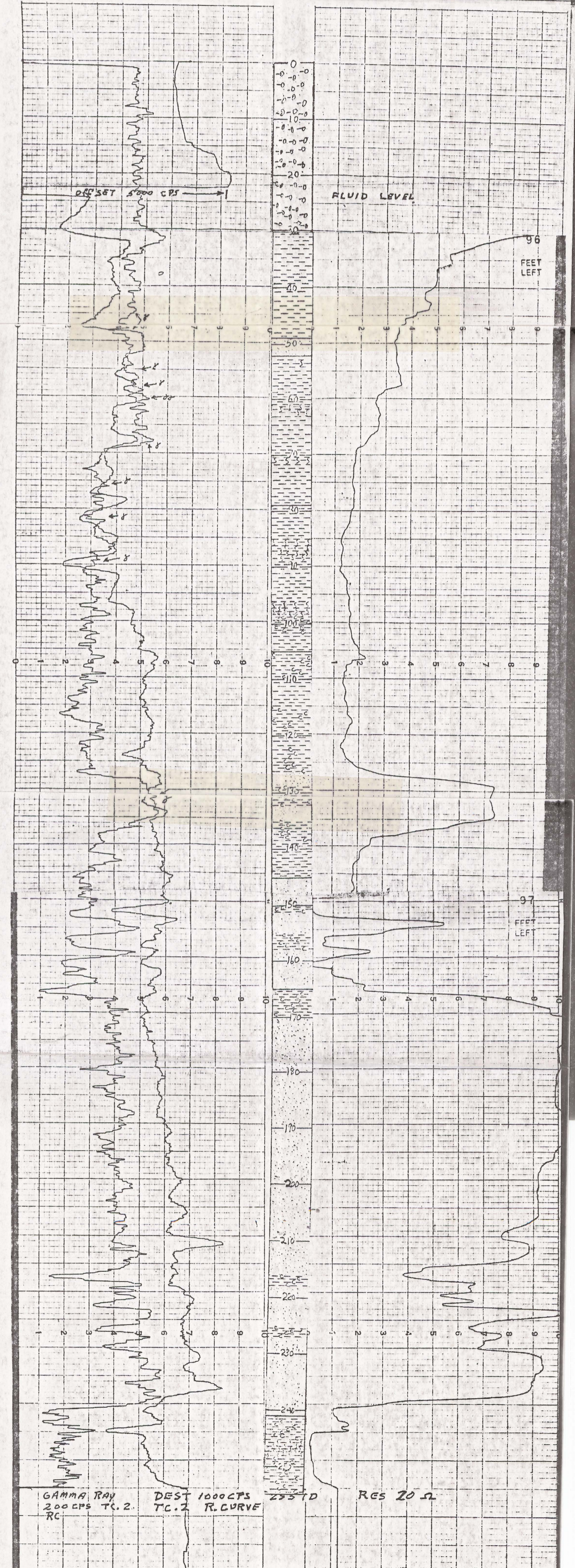


GAMMA RAY 200 CPS TC. 2  
 DECT 1000 CPS TC. 2 R. CURVE  
 255 TD

DATE		7-8 Feb. 1975		AREA		BORE HOLE FLUID	
COMPANY				SALT RIVER PROJECT - M-K			
BORE HOLE		SR7512		STATE		NEW MEXICO	
AREA		J. ZUNI		COUNTY		VALENCIA	
COUNTY		VALENCIA		STATE		NEW MEXICO	
SECTION		T6N		RANGE		R31W	
LOG MEASURE FROM		C. EICV. 6378'		DATE		8 Feb 75	
TOTAL FEET LOGGED		255		UNIT NO.			
INITIAL RUN		SCALE 200		SCALE		SCALE	
T.D. LOGGED		255		GAMMA RESUNS (INITIAL RUN OFFSCALE)			
GAMMA (FULL SCALE)		1000		LOGGING SPEED		LOGGING SPEED	
TIME CONSTANT		.2		LOGGING SPEED		LOGGING SPEED	
LOGGING SPEED		10		LOGGING SPEED		LOGGING SPEED	
CALIBRATION		TOTAL 255		TOTAL		TOTAL	
SOURCE NO.		CS137		SOURCE VALUE		115 MC	
PROBE SIZE		1/4		RES. (FULL SCALE)		20 Ω	
S.P.				MV/IN			

SELF POTENTIAL  
NATURAL GAMMA RAY  
COUNTS PER SECOND

CALIPER  
RESISTANCE  
OHMS



DATE 8-9 Feb 1975

AREA South 24N1

BORE HOLE FLUID

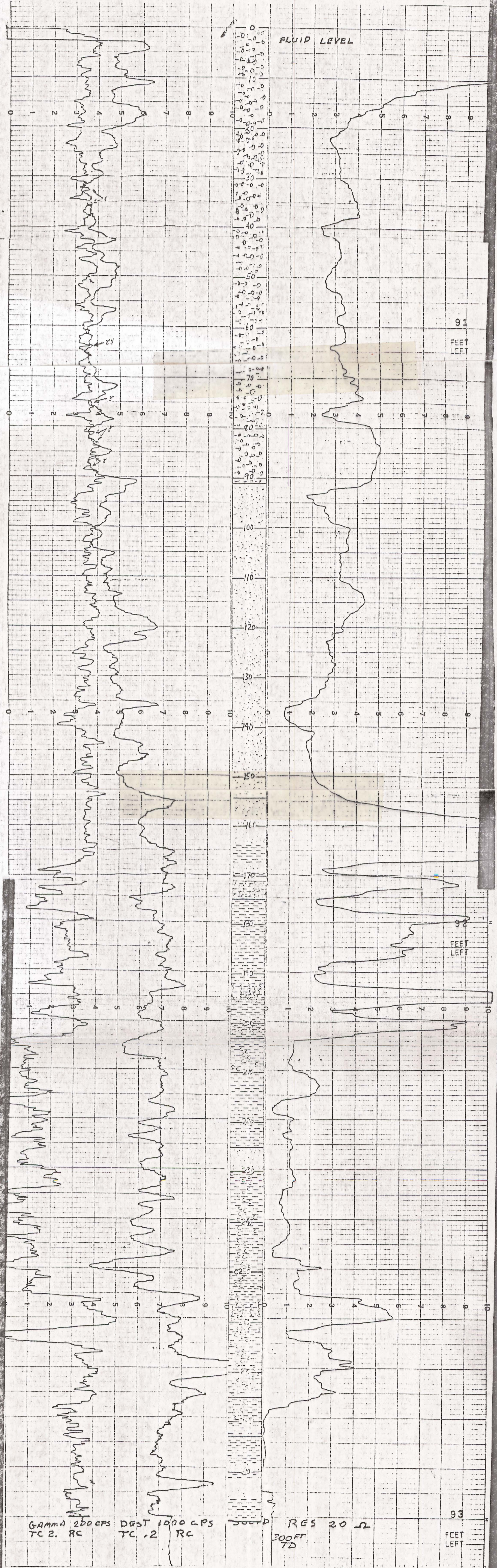
COMPANY SALT RIVER PROJECT - M-K		COUNTY APACHE		DENSITY		VISCOSITY	
BORE HOLE SR 7513		STATE ARIZONA		RESISTIVITY			
AREA S. 24N1		LOG MEASURE FROM C. ELEV. 6595'		DATE 9 Feb 75		OPERATOR M. PARKER	
SECTION CC 19		TOWNSHIP T15N		RANGE R31E		UNIT NO 217	
INITIAL RUN		GAMMA RERUNS (INITIAL RUN OFFSCALE)		DRIVE		TIME IN	
T.D. LOGGED 300		SCALE 200		SCALE		SCALE	
GAMMA (FULL SCALE) 1000		T.C. 2		LOGGING SPEED 10 FT/MIN		LOGGING SPEED	
TIME CONSTANT .2		FROM 300		FROM		TOTAL	
LOGGING SPEED 10		TO 0		TO		ROUNDTRIP MILEAGE	
CALIBRATION 800		TOTAL 300		TOTAL		CHARGEABLE STANDBY	
SOURCE NO CS137		SOURCE VALUE 115MC					
PROBE SIZE 1 1/4							
RES (FULL SCALE) 20							
S.P.							

SELF POTENTIAL  
 - | mv | +

CALIPER

NATURAL GAMMA RAY  
 COUNTS PER SECOND

RESISTANCE  
 OHMS



91  
 FEET LEFT

92  
 FEET LEFT

93  
 FEET LEFT

GAMMA 200 CPS DEST 1000 CPS  
 TC 2. RC TC .2 RC

RES 20 OHM  
 300FT TD