



## **CONTACT INFORMATION**

Mining Records Curator  
Arizona Geological Survey  
1520 West Adams St.  
Phoenix, AZ 85007  
602-771-1601  
<http://www.azgs.az.gov>  
[inquiries@azgs.az.gov](mailto:inquiries@azgs.az.gov)

The following file is part of the

Arizona Department of Mines and Mineral Resources Mining Collection

## **ACCESS STATEMENT**

These digitized collections are accessible for purposes of education and research. We have indicated what we know about copyright and rights of privacy, publicity, or trademark. Due to the nature of archival collections, we are not always able to identify this information. We are eager to hear from any rights owners, so that we may obtain accurate information. Upon request, we will remove material from public view while we address a rights issue.

## **CONSTRAINTS STATEMENT**

The Arizona Geological Survey does not claim to control all rights for all materials in its collection. These rights include, but are not limited to: copyright, privacy rights, and cultural protection rights. The User hereby assumes all responsibility for obtaining any rights to use the material in excess of "fair use."

The Survey makes no intellectual property claims to the products created by individual authors in the manuscript collections, except when the author deeded those rights to the Survey or when those authors were employed by the State of Arizona and created intellectual products as a function of their official duties. The Survey does maintain property rights to the physical and digital representations of the works.

## **QUALITY STATEMENT**

The Arizona Geological Survey is not responsible for the accuracy of the records, information, or opinions that may be contained in the files. The Survey collects, catalogs, and archives data on mineral properties regardless of its views of the veracity or accuracy of those data.

PRINTED: 03/05/2003

ARIZONA DEPARTMENT OF MINES AND MINERAL RESOURCES AZMILS DATA

PRIMARY NAME: HIGHLIFE CLAIMS

ALTERNATE NAMES:

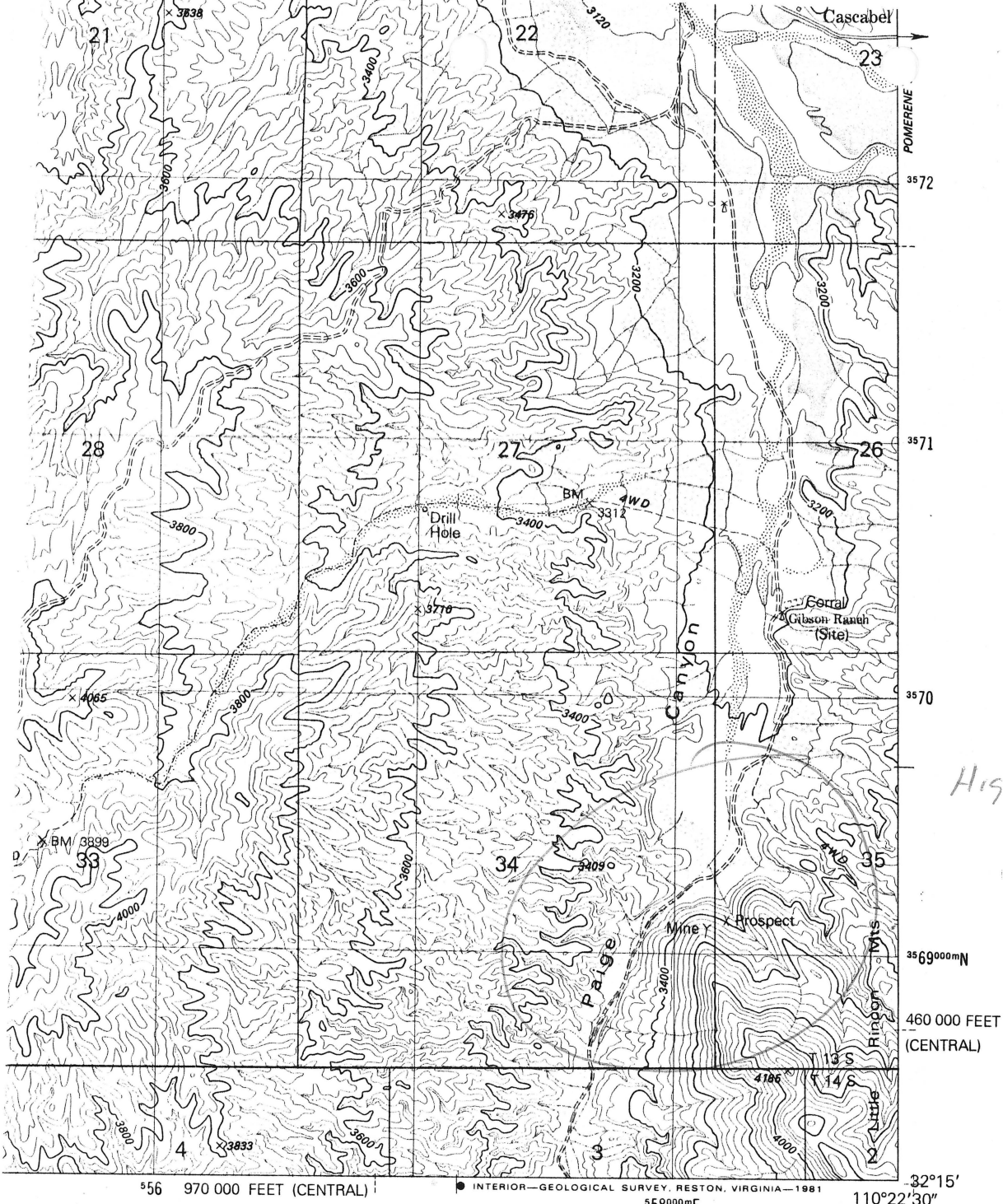
COCHISE COUNTY MILS NUMBER: 880

LOCATION: TOWNSHIP 13 S RANGE 19 E SECTION 35 QUARTER SW  
LATITUDE: N 32DEG 15MIN 30SEC LONGITUDE: W 110DEG 22MIN 55SEC  
TOPO MAP NAME: SOZA CANYON - 7.5 MIN

CURRENT STATUS: RAW PROSPECT

COMMODITY:  
GOLD PLACER

BIBLIOGRAPHY:  
ADMMR HIGHLIFE CLAIMS FILE  
CLAIMS EXTENT INTO SEC 34 SE



*Highlife Claims*

**ROAD CLASSIFICATION**

- Primary highway, hard surface Light-duty road, hard or improved surface
- Secondary highway, hard surface Unimproved road
- Interstate Route U. S. Route State Route

*(WILD HORSE MTN)  
3948 III NE*



QUADRANGLE LOCATION

From  
**WIDE WORLD OF MAPS INC.**  
**ARIZ. MAP SHOP & GALLERY**  
 Phoenix, Arizona

**SOZA CANYON, ARIZ.**

SW/4 REDINGTON 15' QUADRANGLE  
 N3215-W11022.5/7.5

1981

DMA 3948 IV SW—SERIES V898