



CONTACT INFORMATION

Mining Records Curator
Arizona Geological Survey
1520 West Adams St.
Phoenix, AZ 85007
602-771-1601
<http://www.azgs.az.gov>
inquiries@azgs.az.gov

The following file is part of the

Arizona Department of Mines and Mineral Resources Mining Collection

ACCESS STATEMENT

These digitized collections are accessible for purposes of education and research. We have indicated what we know about copyright and rights of privacy, publicity, or trademark. Due to the nature of archival collections, we are not always able to identify this information. We are eager to hear from any rights owners, so that we may obtain accurate information. Upon request, we will remove material from public view while we address a rights issue.

CONSTRAINTS STATEMENT

The Arizona Geological Survey does not claim to control all rights for all materials in its collection. These rights include, but are not limited to: copyright, privacy rights, and cultural protection rights. The User hereby assumes all responsibility for obtaining any rights to use the material in excess of "fair use."

The Survey makes no intellectual property claims to the products created by individual authors in the manuscript collections, except when the author deeded those rights to the Survey or when those authors were employed by the State of Arizona and created intellectual products as a function of their official duties. The Survey does maintain property rights to the physical and digital representations of the works.

QUALITY STATEMENT

The Arizona Geological Survey is not responsible for the accuracy of the records, information, or opinions that may be contained in the files. The Survey collects, catalogs, and archives data on mineral properties regardless of its views of the veracity or accuracy of those data.

PRINTED: 03/05/2003

ARIZONA DEPARTMENT OF MINES AND MINERAL RESOURCES AZMILS DATA

PRIMARY NAME: HIDDEN LODE

ALTERNATE NAMES:

PINAL COUNTY MILS NUMBER: 747

LOCATION: TOWNSHIP 1 S RANGE 12 E SECTION 22 QUARTER SE
LATITUDE: N 33DEG 19MIN 22SEC LONGITUDE: W 111DEG 06MIN 50SEC
TOPO MAP NAME: SUPERIOR - 7.5 MIN

CURRENT STATUS: OTHER

COMMODITY:

UNKNOWN *Av*

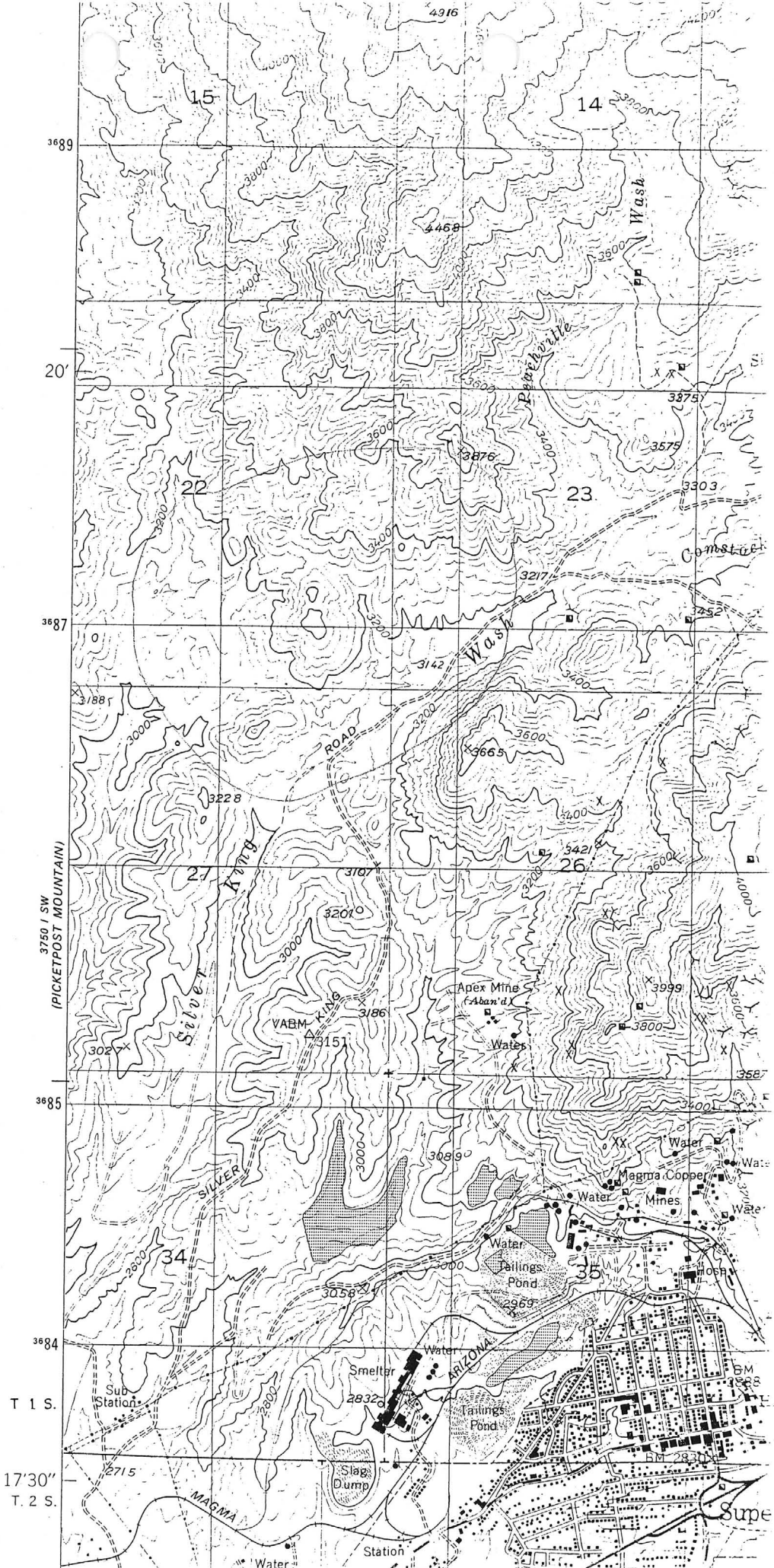
BIBLIOGRAPHY:

ADMMR HIDDEN LODE FILE

SUPERIOR
QUAD

HIDDEN
CODE

TU
R12E
Sec 22



3750 / SW
(PICKETPOST MOUNTAIN)

T 1 S.
17°30"
T. 2 S.

Superior

HIDDEN LODE

PINAL COUNTY

NJN WR 12/18/87: Hal Jones reports that the Farthing and Allan Co (card) still exists and still has the Hidden Lode Claim group near Superior. He has sent some sketchy data, most of which is technically unreliable, which the company has obtained over the years. One of the other principals is George Pheifer, P O Box 6303, Mesa, Arizona 85206.

JONES TAX & ACCOUNTING SERVICE

Hal & Ruth Ann Jones

137 South Macdonald • Mesa, Arizona 85202

Bus: 834-4306 • Res: 838-6956

December 4, 1987

Mr. Nyal Niemuth
Az. Dept. of Mines
Mineral Bldg. Fair Grounds
Phoenix, Az. 85007

Re: Farthing & Allan
Mining Co.
Resume of Mining
Claims.

Dear Mr. Niemuth:

In accordance with our conversation I am enclosing
our resume of our mining claims north of Superior, Az.

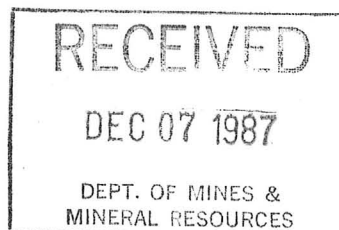
Any inquiries should be directed to:

George Pfeifer
Box 6303
Mesa, Az. 85206

If you have any questions contact me.

Sincerely;

Hal Jones
Hal Jones



FEASIBILITY REPORT

FARTHING & ALLAN MINING CO., INC.

OVERVIEW

On September 18, 1974, the Farthing & Allan Mining Company was incorporated under the laws of the Corporation Commissioner of the State of Arizona. This Corporation has concentrated on the development and expansion program to the point that we now have approximately 800 acres of U.S. Government claims in the most noted mining area in the State of Arizona for copper, gold, silver, zinc, iron, nickel, columbium and platinum group metals. From the beginning these claims have been scrutinized for high values in the ore structures that would lead to the most profitable operation, mainly open pit. Well known field analysts have been engaged at great expense and their reports are enclosed.

The general structure discloses a goodly portion in the form of "complex ores". Also the development work unearthed from two shafts show gold running from 1 oz. to 3 oz. gold per ton with much of it free milling. The black sands show gold and platinum while other show considerable quantities of columbium and other needed metals. A goodly portion of gold, silver and platinum is locked up in the columbium tantalum and will be processed as such, which indicates the need for a well equipped laboratory.

SELECTED In this development period, at least one large body of ore has been ~~blocked~~ out for processing. Visiting mining consultants have estimated from 15,000,000 to 30,000,000 (million) tons of this type of ore is available from just three claims.

The founder of the Farthing & Allan Mining Co., has spent a good portion of his life prospecting for valuable minerals in the area. This area being chosen because of it's high proven mineral content. His vast experience rates him as one of the best in his field. It is his opinion that this group of claims holds the highest potential for the economic operation of a very profitable mine that he has ever seen. His reasoning: That open pit mining provides the least basic costs, together with what has been proven to be high ton values from the matrix.

LOCATION

The location of this property is some three miles northwest of Superior, Arizona. The road is maintained by the county and is good, even for passenger car travel. This property is in highly mineralized country, which was the number one consideration. It is adjacent to the Silver King Mine on the North, which was one of the richest silver deposits ever found in Arizona and is adjacent to the Magma Copper Mine on the South. This old copper mine has been operating for over 60 years and is still in good ore and expanding.

ORGANIZATION

The business and property of the corporation is managed by its Board of Directors. At the present time we have five directors on the board. President, Secretary-Treasurer, 1st Vice President, 2nd Vice President and assistant Secretary-Treasurer.

The Farthing & Allan Mining Co. is an Arizona Corporation, capitalized at 100,000 shares of stock at no par evaluation. Stock sold from \$6.00 per share and as high as \$10.00 per share. Most of the shares have been issued at this date.

The property being located in the heart of the largest mining area in Arizona, is in easy access to experienced man-power with selected skills in all phases of mining.

FARTHING & ALLAN MINING CO.,
69-70 Crestview Drive
Desert Hot Spring, CA 92240
Ph. (619) 329-5054

PRESENT STATUS

You will notice our incorporation date, 1974. The Farthing & Allan Mining Co., has been plagued with many interruptions in development. With the meager start with just Hidden Lodes, No. 1, No. 2, and No. 3, our progress has been hampered by the following:

No. 1--Up until two years ago, controlling interest has been in the hands of one man, who was brilliant in many ways, but not qualified to run a business. I would have to say this was our biggest stumbling block.

No. 2--Up until six months ago, title in the thirty eight claims was divided among four different owners. The Farthing & Allan owned as follows: twelve Hidden Lode claims complete ownership, three Hidden Lode claims, we had one third ownership, twenty six Rhodium, Iridium and Niobium we had one fourth interest.

No. 3--We have gone through four law-suits which have been costly, time-wise and financially.

No. 4--We have suffered through two dishonest managers. This completely upset our our game plan as we had a small pilot mill set up and was using this small production tonnage to acquire furthur financing.

LOOKING TO THE FUTURE

First of all a divorce terminated the one man controlling interest. Controll now restwith the President of the Corporation, being assigned from three other stock-holders.

Secondly all thirty eight claims have now been negotiated into the exclusive ownership of the Farthing & Allan Mining Co.

Third, all claims are completely up to date with all assessment work done and properly recorded.

OUR IMMEDIATE PLAN

All the delays and court battles have left our Corporation completely without funds. Our only asset is complete ownership in approximately eight hundred acres of highly mineralized property. So now as reward for our some thirty five stockholders, we are seeking the following: An outright sale of the property, a sale of controlling interest, a joint venture, or any proposal that would be beneficial to both parties.

Harry O. Allan, Pres.

FARTHING & ALLAN MINING CO.
POST OFFICE BOX 436
SUPERIOR, ARIZONA 85273

On the 29th of June a FIELD VISIT was made to examine the HIDDEN LODE MINING CLAIMS out of Superior, Arizona and samples were obtained for studies as conducted and shown in this report.

SAMPLE FROM THE WALL OF THE SHAFT,
HIDDEN LODE NO. 1.

The sample appeared mottled and varied in color, being somewhat damp. Colors were pearl, lt. gray, dark gray and black. The material crumbled easy. 38 ounces of sample were taken. Microscopic examination revealed some free gold, with other mineralization visible. Upon grinding and drying the sample 6.5% was found to be magnetic, while, 93.5% was non-magnetic. This sample will be designated as A.

SPECIAL SAMPLE FOR PLATINUM METALS,
NO OTHER IDENTIFICATION

Black in color with extremely conspicuous high mineralization. The hardness was between 5.5 and 6.0. Total weight of sample was 31 qzs. Microscopic examination showed mineralization, some marcasite and some specular hematite. This sample will be designated as B. 0.5% mags.

COLUMBIUM-TANTALUM ORE FROM
HIDDEN LODE NO. 1.

Total weight of sample was 41 ozs. Samples were iron-black to brownish black in color; streak was dark red to black; luster was submetallic; Moh's hardness was 6; density was about 6.4. Ground sample revealed 2% magnetics; 98.5 non-magnetic (probably mostly paramagnetic). Microscopic examinations revealed some gold. Designated as C.

HIDDEN LODE NO. 2, Sample for
PLATINUM METALS:

Total weight of Sample was 21 ozs. Sample predominately a peridotite consisting almost wholly of olivine containing accessory pyroxenes. (plutonic rocks) This type of rock is related to the South African diamond-bearing augite. Hardness was about 6. Microscopically showed mineralization of the non-oxidative type, some gold. Exterior infiltrations in the rock was specular hematite and marcasite. The crushed sample was 6.5% magnetic and 93.5% non-magnetic. This sample is designated as D for chemical assaying.

HIDDEN LODE NO. 2, at END,
SIMILAR TO D-DESIGNATE:

Properties similar to D above. Weight of sample was 13 ozs. Same microscopic pattern as D. Some copper in addition to gold-otherwise same throughout as D. Designated as E. Magnetics 2%; Non-magnetics 98%.

HIDDEN LODE NO. 2 END:

Total weight of sample was 28 ozs. Similar physical properties to the above with the same magnetic proportions. Designate as F.

TRAIL SAMPLES:

Total weight was 37 ozs. Many rocks being conglomerates with cementing, plutonic and multi colored. Microscopically gold was in all. Hardness varied from 5.5 to 6.5 Magets 4-6%; non-mags, 94-96%. Disignate as G.

HIDDEN LOBE NO. 2, IN RAVINE:

Total weight was 30 ozs. Hardness was 5.5-6.0. Contained visible quartz, predominately dunite with areas of specular hematite and marcasite infiltration. This area is extremely interesting and more investigation is indicated. Microscopic examination shows a high degree of non-oxidized mineralization was some gold and copper. D H

COLUMBIUM-TANTALUM ORE:

All findings and characteristics similar to Designate C. Weight of this sample was 22 ozs. microscopic examination are same as C. Magnetic properties are same as C. Designate as I.

ROCKS FROM WASH:

This was the surprising as it showed only 5 % magnetics and 95 % none magnetics that could be predominately paramagnetics. Paramagnetics, when weathered and exposed to the sun rays for many years can become magnetic as observed in the black wash sands. It is difficult to project that this is the parent rock of the sands, but this must be considered. Hardness was 5.5 to 6. It was brittle as compared to the other rocks of the area and was identified as being a semi-peridotite of the dunite family of olivines. Weight of samples was 36 ozs. Designate as J.

BLACK WASH SANDS:

20 pounds of sample was obtained. Contained many mineralized particles with 92 % being MAGNETIC and 8 % as NON-MAGNETIC. Microscopic examination showed numerous iron particles that showed magnetic affect while some particles were shiny and unoxidized. This sample will be studied when I return from my European field trip. Designate as K.

CONCLUSIONS:

This concludes my physical and microscopic evaluations and we will now proceed to preform some wet chemical assays.

Copy to:
A. Farthing
H. Allan

A. Stephan Michaelson
A. Stephan Michaelson
Field Analyst
Post Office Box 1205
Nogales, Ar. 85621

ARTHUR and ALLAN MINING CO.
POST OFFICE BOX 436
SUPERIOR, ARIZONA 85273

REPORT OF WET CHEMICAL ASSAY ON DESIGNATE SAMPLES THAT INDICATED
VALUES:

Each sample was accurately weighed and fused with lithium peroxide and barium peroxide. Water extracts were made and set aside. All insoluble material was placed in a teflon-lined bomb for further extraction in Aqua Regia. Such a device has been developed for preparing samples for analysis by varied techniques.

DESIGNATE SAMPLE	GOLD +	SILVER +	PLATINUM METALS +
A	3.02	0.15	0.04
B	0.04	0.06	1.04
C	see below.		
D	0.08	0.10	3.85
E	0.09	0.12	3.92
F	0.09	0.11	3.89
G [Pooled]	3.88	0.55	0.28
H-	3.10	0.20	6.44
I	see below		
J	0.45	0.40	1.04
<u>SAMPLE K:</u>			
Non-Magnetics	0.80	0.14	0.04
Magnetics	1.10	0.20	8.10

+ reported in ounces per assay ton.

C and I: Commercial columbium and tantalum ore.

CONCLUSIONS:

Further explorations are indicated with pilot runs of samples obtained. Field samples that were taken are only indicators and are representative of samples that were examined. There is no doubt that your potential for commercial mining is good. This project should be thoroughly discussed and planned after I return home in mid-August. It was a pleasure to serve you.

A. Stephan Michaelson
A. Stephan Michaelson
Post Office Box 1285
Nogales, Ar. 85621

Budd F. Rude
P. O. Box 56
Carson City, Nevada 89701

13 November 1974

Mr. Ernest Coffman
P.O. Box 701
Placerville, California 95667

7411-6181

MATERIAL: One sample of ore, sampled and identified by Client.

SPECTROGRAPHIC ANALYSIS

<u>ELEMENT</u>	<u>PERCENT</u>
Silicon	19.60
Aluminum	11.60
Magnesium	10.20
Titanium	8.68
Iron	8.64
Calcium	5.20
Zinc	3.16
Potassium	2.40
Sodium	2.16
Vanadium	0.42
Tellurium	0.36
Chromium	0.17
Lead	0.14
Nickel	0.084
Manganese	0.052
Molybdenum	0.042
Boron	0.026
Copper	0.020
Zirconium	0.019
Barium	0.017
Cobalt	0.016
Platinum	0.014 = 4.24 oz/ton
Iridium	0.012 = 3.53 oz/ton
Gold	0.011 = 3.29 oz/ton
Columbium	0.0095
Palladium	0.0060 = 1.77 oz/ton
Rhodium	0.0040 = 1.18 oz/ton
Silver	0.0032 = 0.94 oz/ton
Beryllium	0.00066

Budd F. Rude

10/3/75

Farthing & Allen Mining Co.
c/o Associated Bookkeeping Co.
Suite 12
137 S. MacDonald
Mesa, Arizona 85202

Quantitative Analysis
of
Ore Samples from Top of Shaft
and from Bottom of Shaft.

Top of Shaft

Gold

1.0 oz per ton.

(On 12/28/74 I made a similar analysis
of ore from the top of the shaft which
indicated 3 oz. per ton.)

Cb_2O_5

41.5%

Bottom of Shaft

Gold

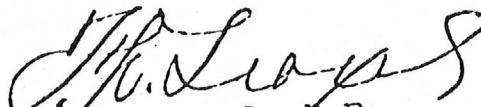
1.0 oz. per ton

Cb_2O_5

75.5%

(This figure seems too high and I am
rechecking this value with new samples.
Waiting for certain chemicals being
shipped from San Francisco.)

All of these checks were made by the wet chemical process.
All samples supplied by F. & A.



F. D. Troxel, P.E.

11/22/75

Farthing & Allen Mining Co.
c/o Associated Bookkeeping Co.
Suite 12
137 S. MacDonald
Mesa, Arizona 85202

Qualative Wet Chemical Analysis
of
Eight Ore Specimens
submitted by
Hal Jones on 11/17/75.

1. HL-10 #1, about 1 oz/ton Au, No Ag, good showing of Pt.
2. Ravine west of shaft, about 3/4 oz/ton Au.
3. Canadian, about 3/4 oz/ton Au.
4. HL-2, canyon, about 3/4 oz/ton Au.
5. West bank, Sk wash, Maytime, about 1/2 oz/ton Au.
6. HL-12, No. 1, south, about 1/2 oz/ton Au.
7. HL-2, west, trace Au.
8. Shaft #2, trace Au.



F. D. Troxel

F. D. TROXEL, P.E.

ENGINEERING CONSULTANT
3216 EAST MITCHELL DRIVE
PHOENIX, ARIZONA 85018

MINING AND POWER INDUSTRIES

(602) 956-1522

October 22, 1974

Arthur Farthing
Farthing & Allan Mining Co.
P. O. Box 436
Superior, Arizona 85273

Dear Mr. Farthing:

When I left you on Friday evening it was agreed that I should work on the magnetic separation of the black sands first.

I did so, using the HL-I,S-K wash sands, with the following results. All figures are on a weight basis.

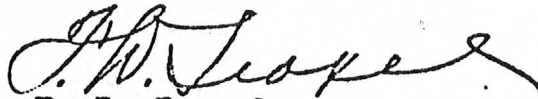
1. The sands separated 48.2% magnetic, 51.8% non-magnetic. The sand was dried before separating. I tried some before drying and got a 40-60% separation. I repeated this with the same result.
2. The Iron separated 85.5% in the magnetic portion and 14.5% in the non-magnetic portion.
3. The platinum stayed mostly with the magnetic portion, but there was considerable in the non-magnetic portion.
4. There was no evidence of any Palladium.
5. The Columbium separated 55.0% with the magnetic and 45.0% with the non-magnetic portion. There was 12.75% of Cb_2O_5 in the combined sand. (Both Magnetic and non-magnetic).
6. I have not checked the separation for gold and silver, but since both are non-magnetic, most of each will stay with the non-magnetic portion.

Therefore, I must come to the conclusion that magnetic separation of this particular sand would not be very satisfactory. I would suggest trying washing and a vibrating table, as an experiment. Apparently some cut and try methods are going to be necessary.

If you compare the results given above with Dr. Michaelson's you will see a big difference. I don't know just what sand he used.

You will be hearing from me again soon.

Sincerely,

A handwritten signature in cursive script, appearing to read 'F. D. Troxel', written in dark ink.

F. D. Troxel

F. D. TROXEL, P.E.
ENGINEERING CONSULTANT
3216 EAST MITCHELL DRIVE
PHOENIX, ARIZONA 85018

MINING AND POWER INDUSTRIES

(602) 956-1522

2/24/75

Report on Investigation of
Hidden Lode Claims #1 to #3 Inclusive
Fartning and Allen Mining Co.

The location of these claims is some 3 miles northwest from Superior, Arizona.

This property is in mineralized country. It is adjacent to the Silver King mine, which was one of the richest silver deposits ever found in Arizona. It is adjacent to the Magma Mine, an old copper mine, which has been operating for over 60 years and is still in good operation and expanding.

This property consisting of 180 acres has many metal-element containing outcrops, rock formations and sands.

I have visited the site twice, 10/13/74 and 2/13/75 and have obtained with my own hands, eleven, specimens from eleven different locations and I have analysed these specimens myself, with the following results:

- (a) Three specimens showed platinum, one of them in considerable quantity.
- (b) Six specimens showed gold, one about 3 oz. per ton.
- (c) Three specimens showed columbium in considerable quantities, one 41.5% Cb_2O_5 .
- (d) Three specimens showed a considerable amount of the Rare Earths.
- (e) The black sands showed gold and platinum. These sands do not seem to be amenable to magnetic separation.

All of these analyses, except for the magnetic separations, were made by wet chemical methods.

After the two visits to the site, the analysing of eleven specimens and examining the residue from the two core-drill holes and the material brought out of the discovery shaft, it seems that

there may well be some 15,000,000 tons of possible commercial ore on this property and there might be as much as 30,000,000 tons. Additional core-drilling would make it possible to make a more accurate estimate.

Some additional research work should be done to determine the best methods of mining, concentrating and marketing these materials.

I would suggest that operation on a somewhat limited scale, until these matters are clarified, is indicated.

I would also suggest that the tailings be placed so that they would be easily available for re-treatment at a latter date, if this should ever seem desirable.

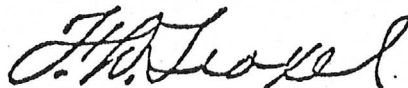
I would further suggest that, since the concentration of gold is well understood, and since it is readily marketable, the gold bearing ore be processed initially, in order to generate a quick cash flow.

The gold in the gold bearing ore will amalgamate, which indicates that it is clean and free milling. Some of the other ores are more complex. Most of the rock is relatively soft and easily crushed. Much of the rock is decomposed.

There is a smelter within 15 miles and there is a good road within 3 miles of these claims, connecting with the smelter.

This report was assembled in a very few days, after I was asked to prepare it, and therefore, leaves some things to be desired.

Signed:



F. D. Troxel, P.E.

SALT LAKE OFFICE AND WAREHOUSE:
2045 East 6060 South, Salt Lake City, Utah 84121 • Phone: 801-278-1515

BRANCH OFFICES:

Seattle • Los Angeles • Phoenix • Denver • Albuquerque • Houston

Montgomery Ward

March 14, 1978

Mr. George J. Pfeiffer Jr.
Associated Polygraph
2929 East Thomas Road, Suite 109
Phoenix, AZ 85016

Dear George:

Here is a recap on the samples you sent me:

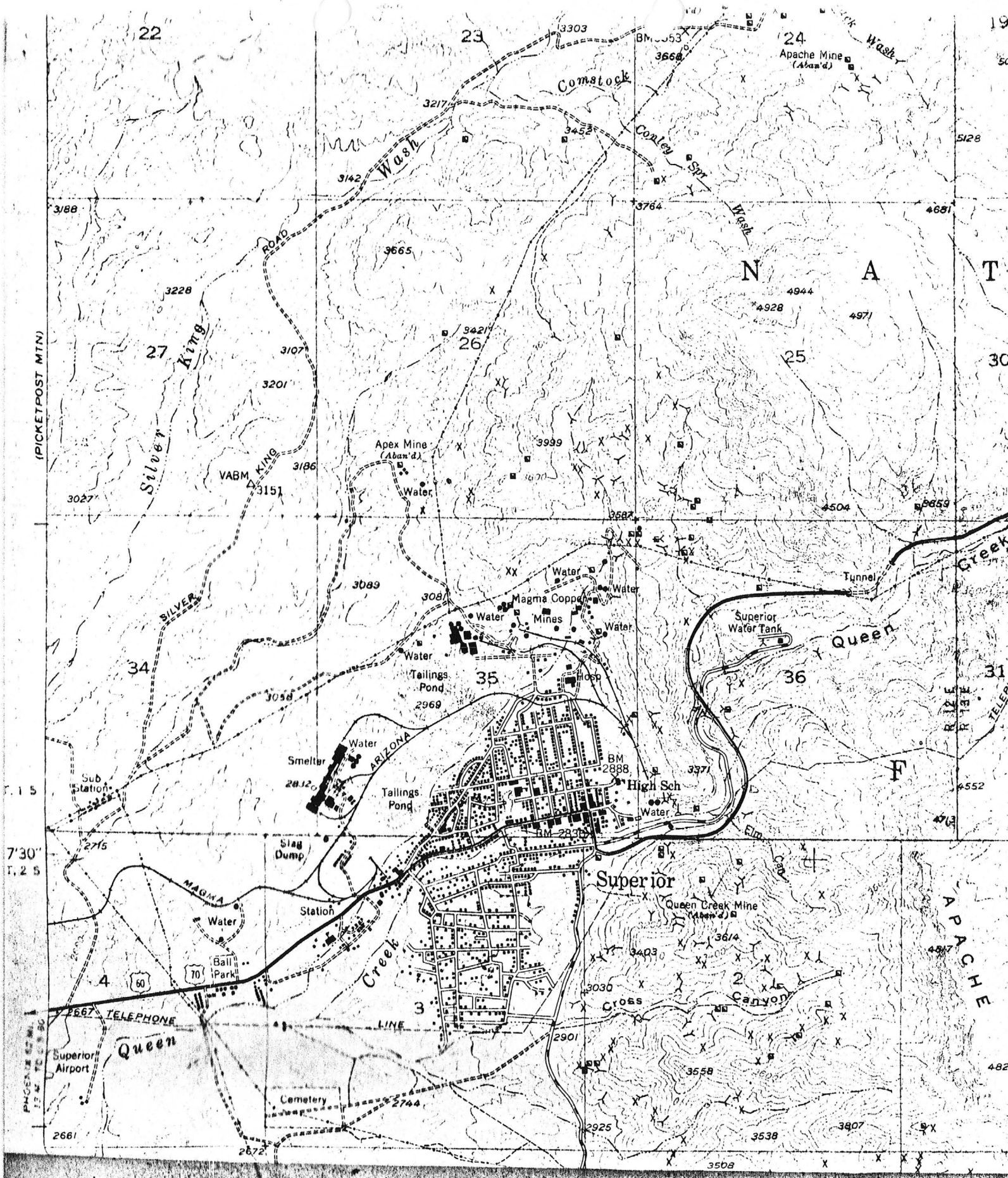
1. Grey Quartz granular, pulverized, approximately 2 ozs. gold and 7 ozs. silver per ton.
2. Black powder sample, nearly 2 ozs. gold, very little silver.
3. Brown powder sample, again, nearly 2 ozs. gold, and very little silver.
4. Black sand sample, almost 3/4 oz. gold per ton, no silver.

My man could not find any mercury in the samples and absolutely zero on platinum, paladium, and rhodium.

Good luck,

Vern
Vern H. Bolinder, President

VHB:gt



(PICKETPOST MTN)

7' 15"
7' 30"
7' 45"

60
70
TELEPHONE
LINE

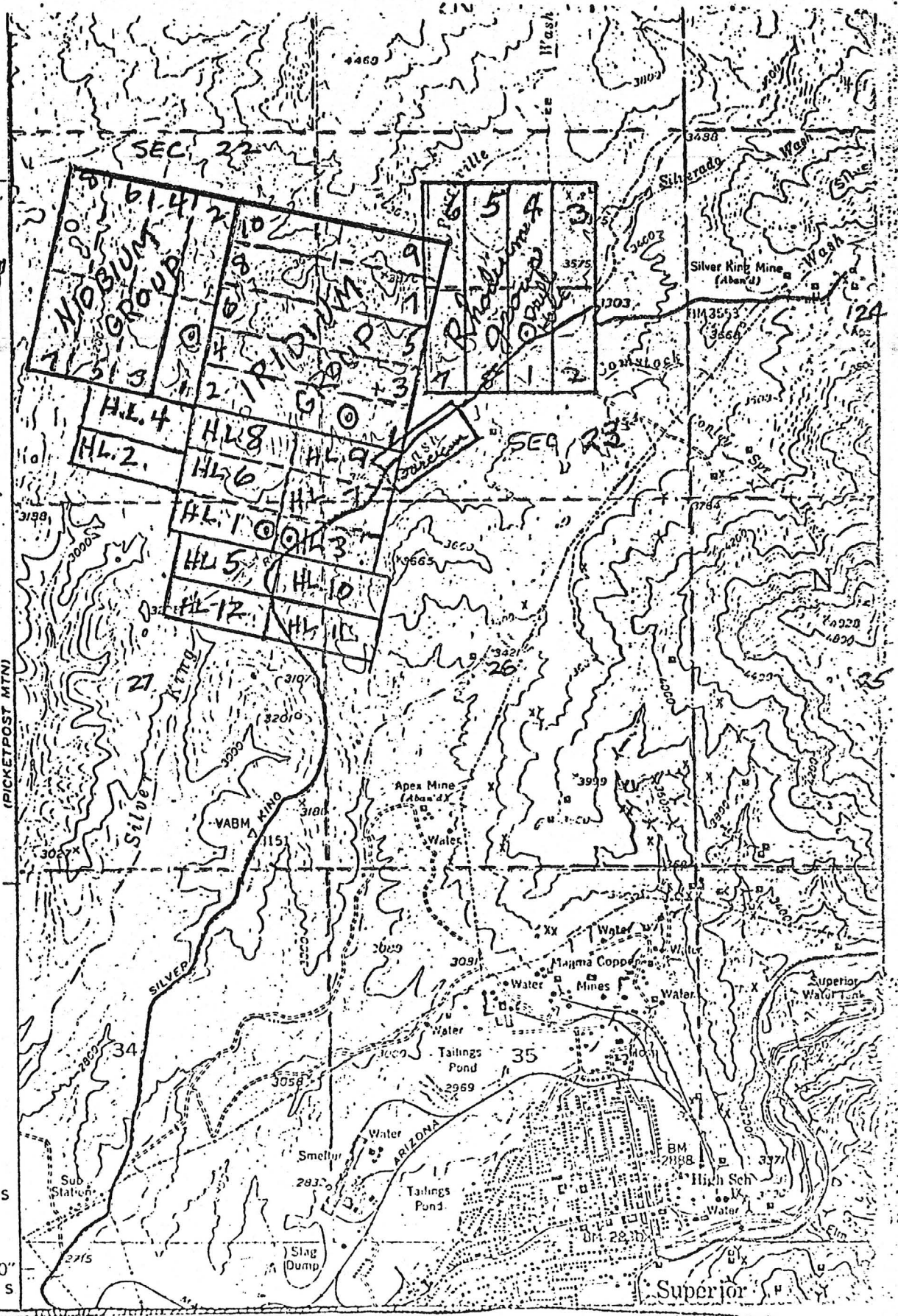
19
50
5128
30
31
4552
4822

N A T

F

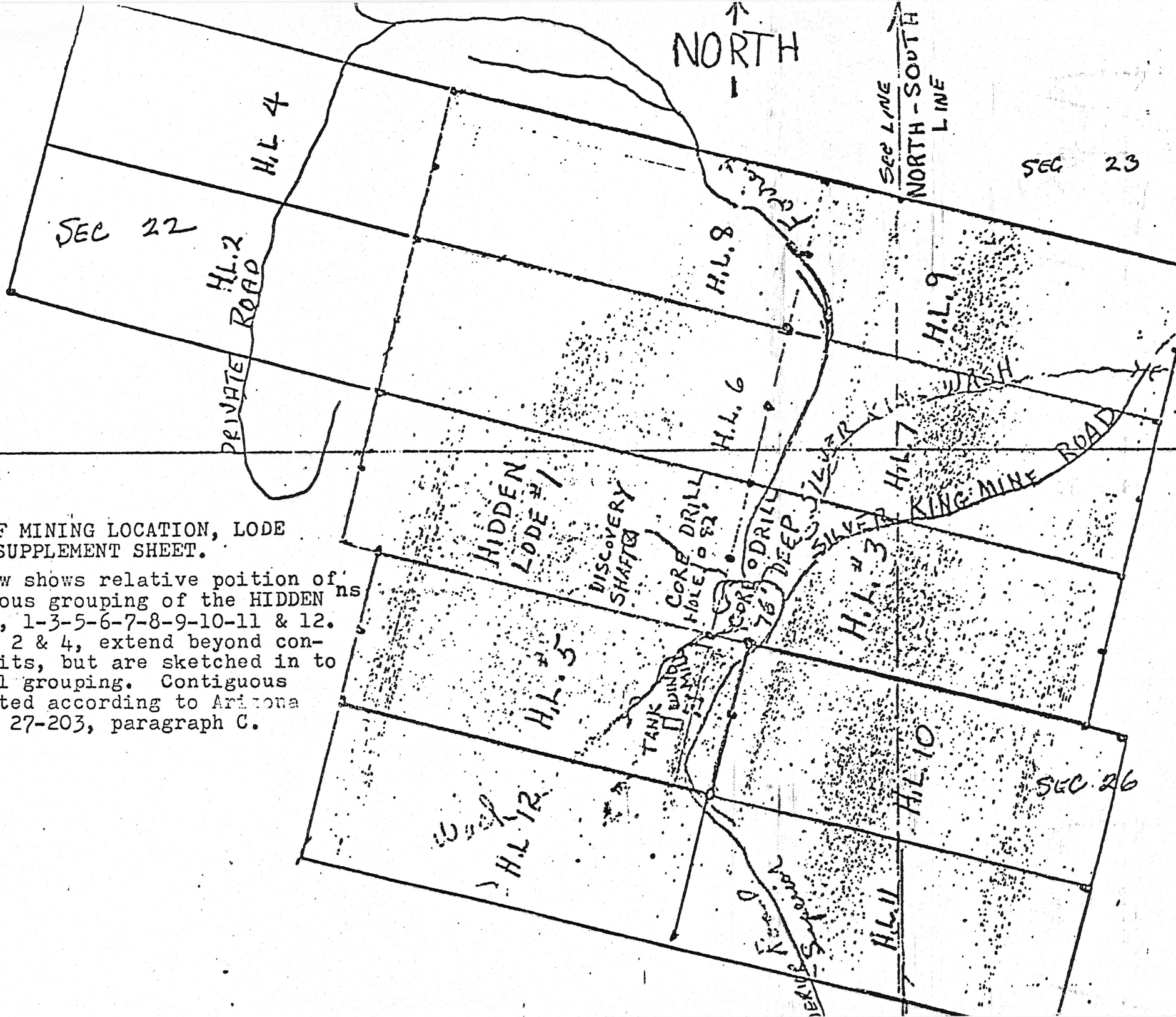
APACHE

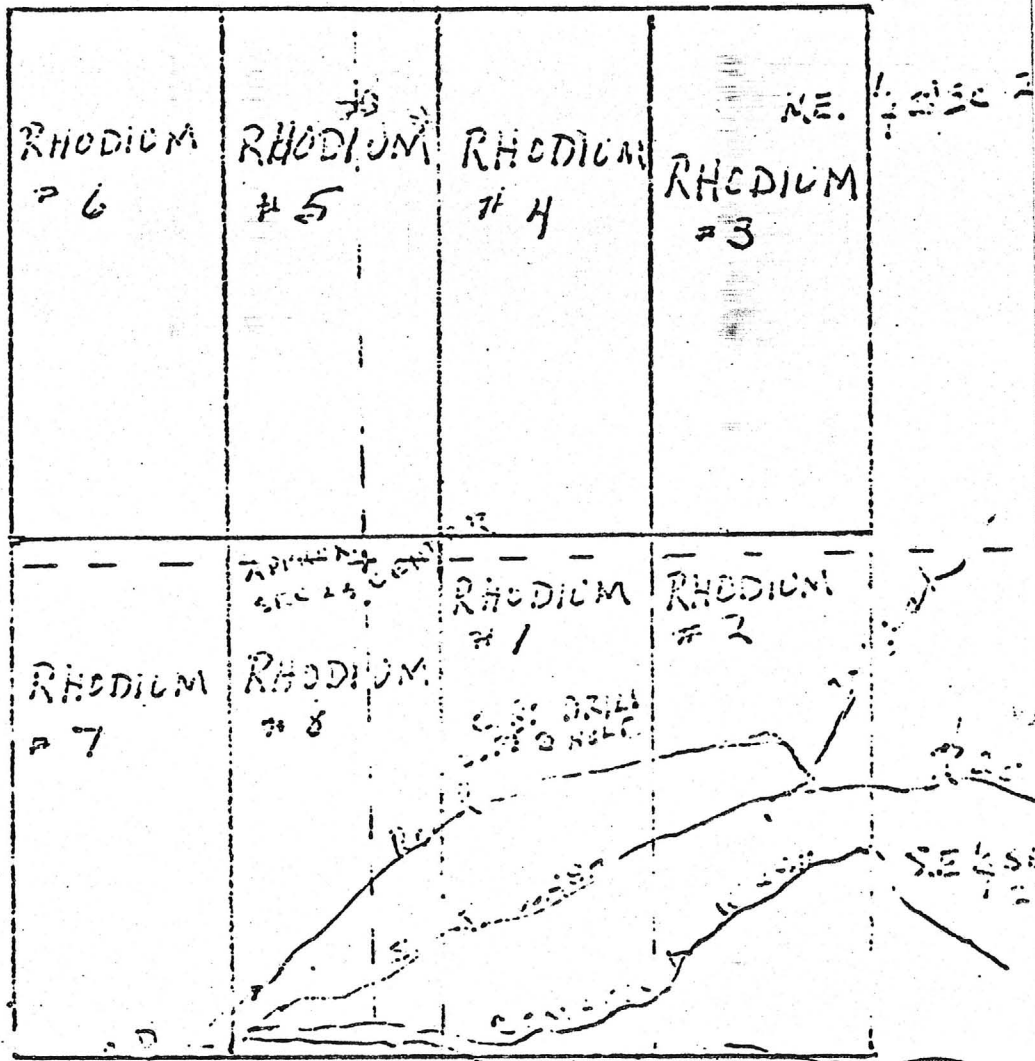
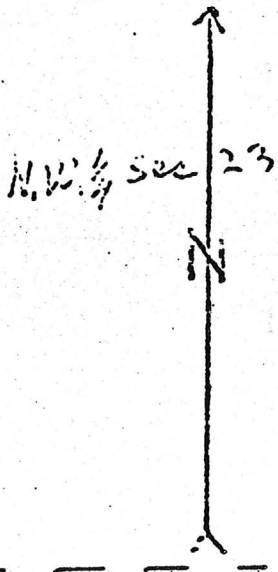
Legend
 ⊙ = Drill Test Holes
 [] = Hidden Leade



NOTICE OF MINING LOCATION, LODE CLAIMS, SUPPLEMENT SHEET.

Sketch below shows relative position of the contiguous grouping of the HIDDEN LODE CLAIMS, 1-3-5-6-7-8-9-10-11 & 12. HIDDEN LODE 2 & 4, extend beyond contiguous limits, but are sketched in to show overall grouping. Contiguous claims located according to Arizona Mining Code 27-203, paragraph C.



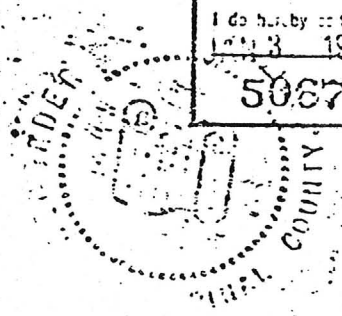


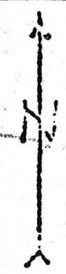
S.W. 1/4 sec 23

SILVER KING ROAD
SILVER KING FARM

OLD MINE ROAD

I do hereby certify that the within and set forth is a true and correct copy of the original as filed in my office on **NOV 13 1975 at 1:00pm** .ONT **771** PAGE **70** *W. H. Farkley*
 WILLIAM S. TRUMAN, Pinal County Recorder *James [Signature]* Deputy





SECTION #2

IRIDIUM #10

IRIDIUM #9

IRIDIUM #8

IRIDIUM #7

IRIDIUM #6

IRIDIUM #5

IRIDIUM #4

IRIDIUM #3

IRIDIUM #2

DRILL HOLE
10 FT.

IRIDIUM #1

#8
HIDDEN LODE CHAINS #7

HAVER HILL
HIDDEN LODE CHAINS



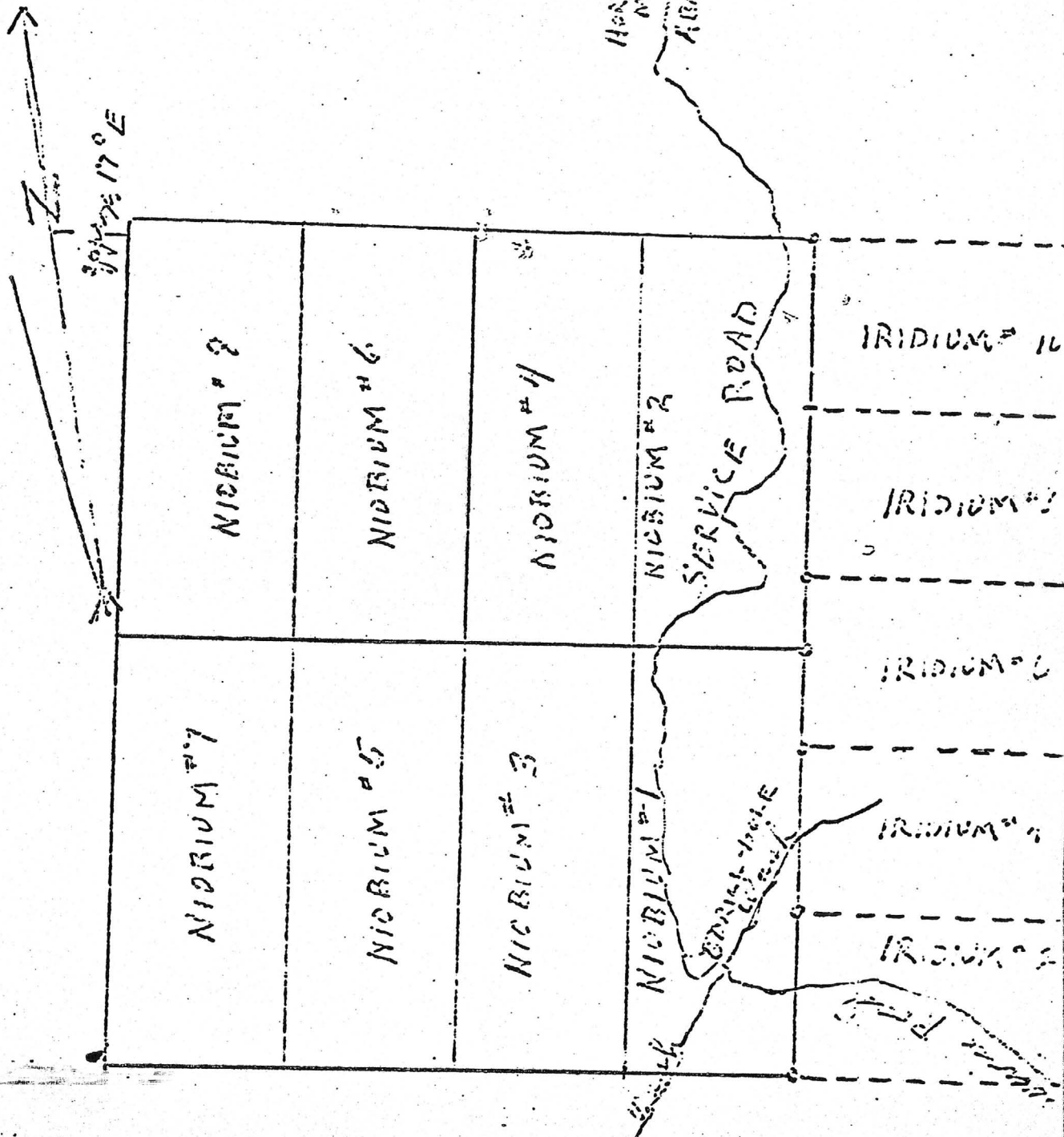
Filed here by Wm. S. Truman on JAN 3 1975 at Cooperville DNT 771 PAGE 58 of 7 For the

508702

WILLIAM S. TRUMAN, Pinal County Recorder

Notary Public for Pinal County, Arizona

Jean Deputy



I do hereby certify that the within named instrument was recorded at noon on JAN 3 1975 at Liberal O.K. DNT 711 PAGE 36 of 1 A. H. Fathaway Records of Final County, Arizona
 506691 WILLIAM S. TRUMAN, Final County Recorder, Jim Truman Deputy

