



## **CONTACT INFORMATION**

Mining Records Curator  
Arizona Geological Survey  
1520 West Adams St.  
Phoenix, AZ 85007  
602-771-1601  
<http://www.azgs.az.gov>  
[inquiries@azgs.az.gov](mailto:inquiries@azgs.az.gov)

The following file is part of the

Arizona Department of Mines and Mineral Resources Mining Collection

## **ACCESS STATEMENT**

These digitized collections are accessible for purposes of education and research. We have indicated what we know about copyright and rights of privacy, publicity, or trademark. Due to the nature of archival collections, we are not always able to identify this information. We are eager to hear from any rights owners, so that we may obtain accurate information. Upon request, we will remove material from public view while we address a rights issue.

## **CONSTRAINTS STATEMENT**

The Arizona Geological Survey does not claim to control all rights for all materials in its collection. These rights include, but are not limited to: copyright, privacy rights, and cultural protection rights. The User hereby assumes all responsibility for obtaining any rights to use the material in excess of "fair use."

The Survey makes no intellectual property claims to the products created by individual authors in the manuscript collections, except when the author deeded those rights to the Survey or when those authors were employed by the State of Arizona and created intellectual products as a function of their official duties. The Survey does maintain property rights to the physical and digital representations of the works.

## **QUALITY STATEMENT**

The Arizona Geological Survey is not responsible for the accuracy of the records, information, or opinions that may be contained in the files. The Survey collects, catalogs, and archives data on mineral properties regardless of its views of the veracity or accuracy of those data.

04/03/90

ARIZONA DEPARTMENT OF MINES AND MINERAL RESOURCES FILE DATA

PRIMARY NAME: HERRING MINE

ALTERNATE NAMES:

COCHISE COUNTY MILS NUMBER: 909

LOCATION: TOWNSHIP 23 S RANGE 25 E SECTION 18 QUARTER  
LATITUDE: N 31DEG 26MIN 34SEC LONGITUDE: W 109DEG 49MIN 23SEC  
TOPO MAP NAME: BISBEE NE - 7.5 MIN

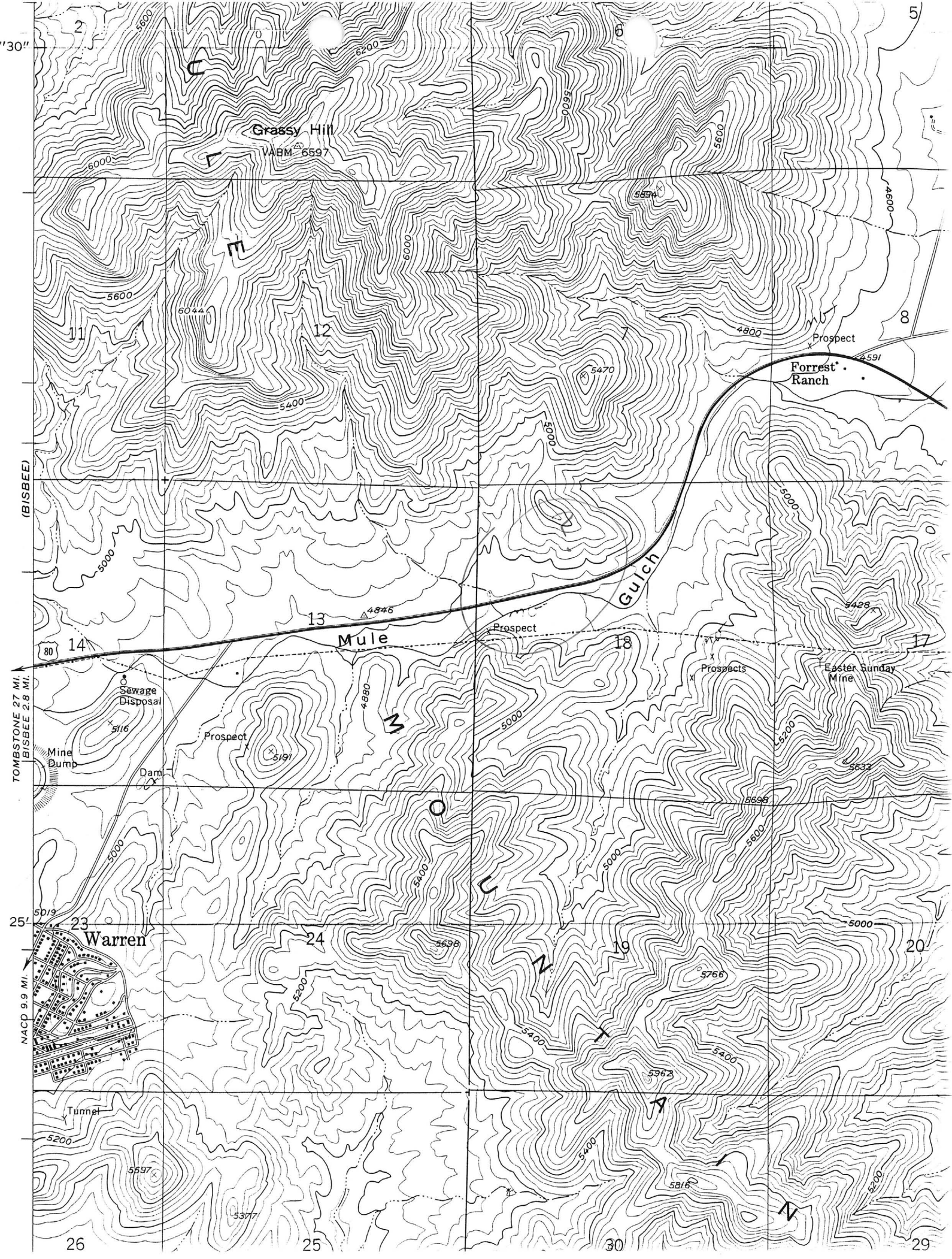
CURRENT STATUS: UNKNOWN

COMMODITY:

COPPER  
GOLD  
SILVER

BIBLIOGRAPHY:

ADMMR HERRING MINE FILE



Hall, Jos. E.  
Bisbee, Arizona

Box 390

7-10-39

✓ Aldinger, Adolf  
Bisbee, Arizona Box 893

7-10-39

✓ See MH-9 - Re Owners Mine Report -Herring Mine.

✓ See MW-8 - Re Owners Mine Report -WILD CAT GROUP, 7-10-39

SEE: HERRING MINE, Warren Dist., <sup>Cochise Co.</sup> Cochise Co., 3 unpatented claims.  
5/3/56

ALLEN, JOHANNA  
Box 2397  
Warren, Arizona

SEE: HERRING MINE, Warren District, Cochise Co.- 3 patented claims.

ALDINGER, FREDERICK  
Box 893  
Bisbee, Arizona

SEE: HERRING MINE, Warren District, Cochise Co., 3 patented claims  
5/3/56

HERRING MINE

Cu, Au, Ag, Pb

Cochise

2 - 5

T 23 S, R 25 E

Adolph Aldinger, J. E. Hall, Bisbee

M 49

**DEPARTMENT OF MINERS' RESOURCES**  
**STATE OF ARIZONA**  
**OWNERS MINE REPORT**

Date July 10, 1939

Mine Herring ✓

District Warren Dist., Cochise Co.

Location On Hwy 80, 3½ mi. from Bisbee P. O.

Former name None

Owner Adolf Aldinger, Jos. E. Hall ✓

Address Bisbee

Address Box (?)

Operator

Gen. Mgr.

President

Mill Supt.

Mine Supt. ✓

Men Employed

Principal Metals Copper, gold, silver, lead ✓

Mill: Type & Cap.

Production Rate not established

Power: Amt. & Type none

Operations: Present Idle

Operations Planned Depend on financing

Number Claims, Title, etc. 5 pat'd lodes.

Description: Topog. & Geog. Divide on Mule Mt. extend onto top Juniper Flat

Mine Workings: Amt. & Condition Herring #1, shallow shafts, little development

(over)



**Geology & Mineralization** Country rock, granite porphyry, cut by quartz ledges.

**Ore: Positive & Probable, Ore Dumps, Tailings** Ore showing, but undeveloped.

**Mine, Mill Equipment & Flow Sheet** none

**Road Conditions, Route** Hwy 80 runs over claims.

**Water Supply** Springs nearby

**Brief History** Part of Bisbee Honietown Min'g. Co. P.D. had property within 500' of this; property sold since.

**Special Problems, Reports Filed** No reports.

**Remarks** A promising piece of ground for development, and would make a low price.

**If property for sale: Price, terms and address to negotiate.** Will make any type of deal. Look it over and make an offer.

Signed.....ADOLF ALDINGER, JOSEPH E. HALL

Use additional sheets if necessary.

Principal Minerals      Copper, Gold, Silver & Lead.