



CONTACT INFORMATION

Mining Records Curator
Arizona Geological Survey
1520 West Adams St.
Phoenix, AZ 85007
602-771-1601
<http://www.azgs.az.gov>
inquiries@azgs.az.gov

The following file is part of the

Arizona Department of Mines and Mineral Resources Mining Collection

ACCESS STATEMENT

These digitized collections are accessible for purposes of education and research. We have indicated what we know about copyright and rights of privacy, publicity, or trademark. Due to the nature of archival collections, we are not always able to identify this information. We are eager to hear from any rights owners, so that we may obtain accurate information. Upon request, we will remove material from public view while we address a rights issue.

CONSTRAINTS STATEMENT

The Arizona Geological Survey does not claim to control all rights for all materials in its collection. These rights include, but are not limited to: copyright, privacy rights, and cultural protection rights. The User hereby assumes all responsibility for obtaining any rights to use the material in excess of "fair use."

The Survey makes no intellectual property claims to the products created by individual authors in the manuscript collections, except when the author deeded those rights to the Survey or when those authors were employed by the State of Arizona and created intellectual products as a function of their official duties. The Survey does maintain property rights to the physical and digital representations of the works.

QUALITY STATEMENT

The Arizona Geological Survey is not responsible for the accuracy of the records, information, or opinions that may be contained in the files. The Survey collects, catalogs, and archives data on mineral properties regardless of its views of the veracity or accuracy of those data.

PRINTED: 03/05/2003

ARIZONA DEPARTMENT OF MINES AND MINERAL RESOURCES AZMILS DATA

PRIMARY NAME: HEARST MINE

ALTERNATE NAMES:

COCHISE COUNTY MILS NUMBER: 544

LOCATION: TOWNSHIP 13 S RANGE 23 E SECTION 31 QUARTER NE
LATITUDE: N 32DEG 15MIN 59SEC LONGITUDE: W 110DEG 01MIN 54SEC
TOPO MAP NAME: WINCHESTER MTS - 15 MIN

CURRENT STATUS: PAST PRODUCER

COMMODITY:

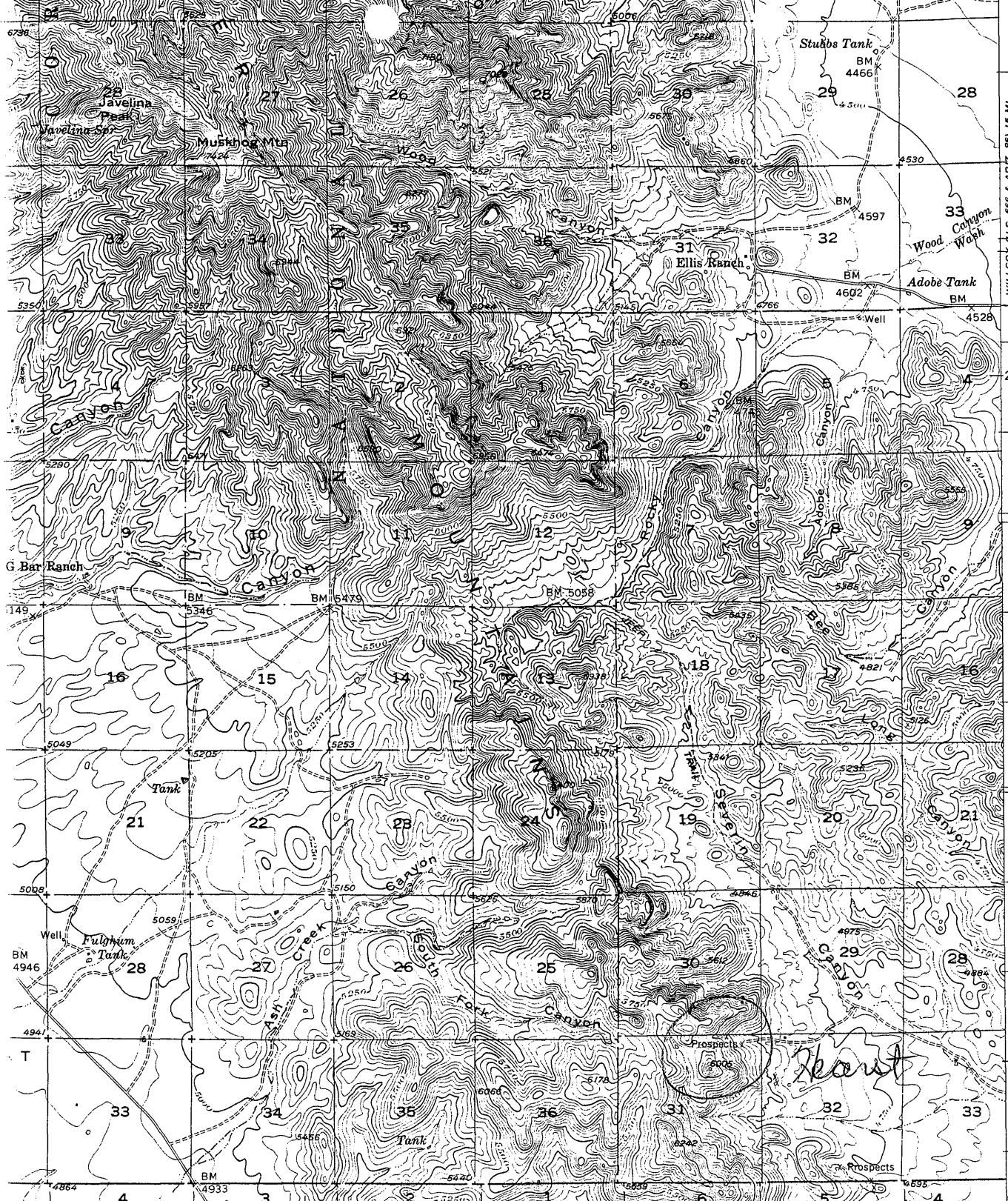
SILICON QUARTZ

SILVER

GOLD LODE

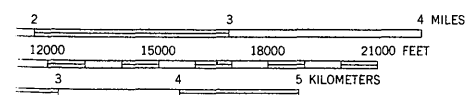
BIBLIOGRAPHY:

KEITH, S.B., 1973, AZBM BULL. 187, P. 91
USGS PP 416, GEO & ORE DEPOSITS OF DRAGOON
QUAD, P. 161
ADMMR AZ. IND. MINERALS RPT. NO. 2, P. 19
ADMMR HEARST MINE FILE



WILLCOX (U.S. 666 & ARIZ. 86) 15 MI.

WILLCOX (U.S. 666 & ARIZ. 86) 17 MI. R. 22 E. 5' INTERIOR-GEOLOGICAL SURVEY, WASHINGTON, D. C.-1962 593000m.E. R. 23 E. 110°00'



ROAD CLASSIFICATION
 Light-duty Unimproved dirt - - - - -



WINCHESTER MTS., ARIZ.
 N3215-W11000/15

COLORADO OR WASHINGTON 25, D. C.
 MBOLS IS AVAILABLE ON REQUEST

1957

COCHISE

2
CS

ARIZONA DEPARTMENT OF MINES AND MINERAL RESOURCES

VERBAL INFORMATION SUMMARY

1. Mine file: HEARST
2. Mine name if different from above:
3. County: Cochise (MILS 544)
4. Information from: Bill Hollingshead
Company: AZ State Land Dept.
Address: Tucson

Phone:

5. Summary of information received, comments, etc.:

Bill reported that the mine called Hearst in ABM Bulletin 187 is being worked by Marcellus DuBoise of Wilcox, phone 384-2895. The most northern adit/glory hole is along a N35W 50°E zone of quartz-calcite veining and siliceous replacement in Pre-~~E~~(?) granite. Large rhombs of dark gray, white and yellow calcite occur with cockscomb quartz in sheeted vein up to 12' wide.

Date: June 1989

Harrison E. Matson, Mining Engineer

WINCHESTER MINE

COCHISE COUNTY

GWI WR 8/22/75 - G. Bott reported that the Winchester Silver Mine in the Winchester Mts., Cochise Co. operated during the '80's and that one mining claim and a millsite were patented.

Memo. Report.

Winchester Mine
Winchester Mountains
Cochise County, Arizona.

The Winchester mine, also known as the old Hagen-Hearst mine, is located in the Winchester Mountains 11.4 miles west from Willcox, Arizona, and is reached by a fair desert road.

The property has a past production record of fabulously rich silver ore.

Erratic deposits occurring in shallow workings in quartzite near limestone. Ores occur away from the limestone in cross fractures. Quartzite has general trend of N60°W--S60°E and occurs for widths up to 200 feet for distance of over $\frac{1}{2}$ mile, more or less mineralized. Deep workings not accessible but apparently values do not extend to any great depth. Dumps of deep shaft workings started in quartzite show barren limestone was encountered, and suggest limited depth of the quartzite.

Samples taken for record show:

Sample No.	Description	Gold Ozs. PerTon	Silver Ozs. PerTon
1.	Selected "grab" sample from coarse assorted ores on dumps, S.E. end quartzite reef, near deep shaft	0.04	13.40
2.	Selected "grab" sample from assorted ore on dumps of shaft and open cuts N.W. end of quartzite reef	0.03	6.40
3.	Screened ore on dump near S.E. end of quartzite reef	0.02	6.10

In none of the workings could I find ore in place for sampling.

Property is not worth further consideration.

Tucson, Arizona, June 16, 1938.
Property visited May 6, 1938.


F. H. Lerchen.

C
O
P
Y

Willcox, Arizona

Mr. E. D. Morton
Tucson, Arizona

Dear Mr. Morton:

Winchester Mines

Driving out this afternoon to the Winchester mines district with party, as guide, who owns several claims about 1/2 mile from the Sutter group, better, and bigger, of course, than the Sutter group.

The Sutter group, by the way, is one of the old Haggan and Hearst properties, and Judge Sutter had a lease on the property at one time -- and still represents, as attorney, the Haggan interests. Sutter, and his partner, shipped a considerable tonnage of ore which showed an average of about 19 ozs. silver per ton, and a few hundredths in gold. They had a very favorable schedule from smelter on account of high silica content.

As far as I have been able to find out the Winchester ores contain little, if any "pay value" in lead or other metals.

Presume you have all kinds of engineers' reports on the Winchester mines in the files.

Yours truly,

(Signed) F. H. Lerchen