



CONTACT INFORMATION

Mining Records Curator
Arizona Geological Survey
1520 West Adams St.
Phoenix, AZ 85007
602-771-1601
<http://www.azgs.az.gov>
inquiries@azgs.az.gov

The following file is part of the

Arizona Department of Mines and Mineral Resources Mining Collection

ACCESS STATEMENT

These digitized collections are accessible for purposes of education and research. We have indicated what we know about copyright and rights of privacy, publicity, or trademark. Due to the nature of archival collections, we are not always able to identify this information. We are eager to hear from any rights owners, so that we may obtain accurate information. Upon request, we will remove material from public view while we address a rights issue.

CONSTRAINTS STATEMENT

The Arizona Geological Survey does not claim to control all rights for all materials in its collection. These rights include, but are not limited to: copyright, privacy rights, and cultural protection rights. The User hereby assumes all responsibility for obtaining any rights to use the material in excess of "fair use."

The Survey makes no intellectual property claims to the products created by individual authors in the manuscript collections, except when the author deeded those rights to the Survey or when those authors were employed by the State of Arizona and created intellectual products as a function of their official duties. The Survey does maintain property rights to the physical and digital representations of the works.

QUALITY STATEMENT

The Arizona Geological Survey is not responsible for the accuracy of the records, information, or opinions that may be contained in the files. The Survey collects, catalogs, and archives data on mineral properties regardless of its views of the veracity or accuracy of those data.

07/06/90

ARIZONA DEPARTMENT OF MINES AND MINERAL RESOURCES FILE DATA

PRIMARY NAME: HAYSTACK BUTTE ONYX

ALTERNATE NAMES:

GILA COUNTY MILS NUMBER: 239

LOCATION: TOWNSHIP 4 N RANGE 16 E SECTION 14 QUARTER W2
LATITUDE: N 33DEG 41MIN 15SEC LONGITUDE: W 110DEG 39MIN 01SEC
TOPO MAP NAME: HAYSTACK BUTTE - 7.5 MIN

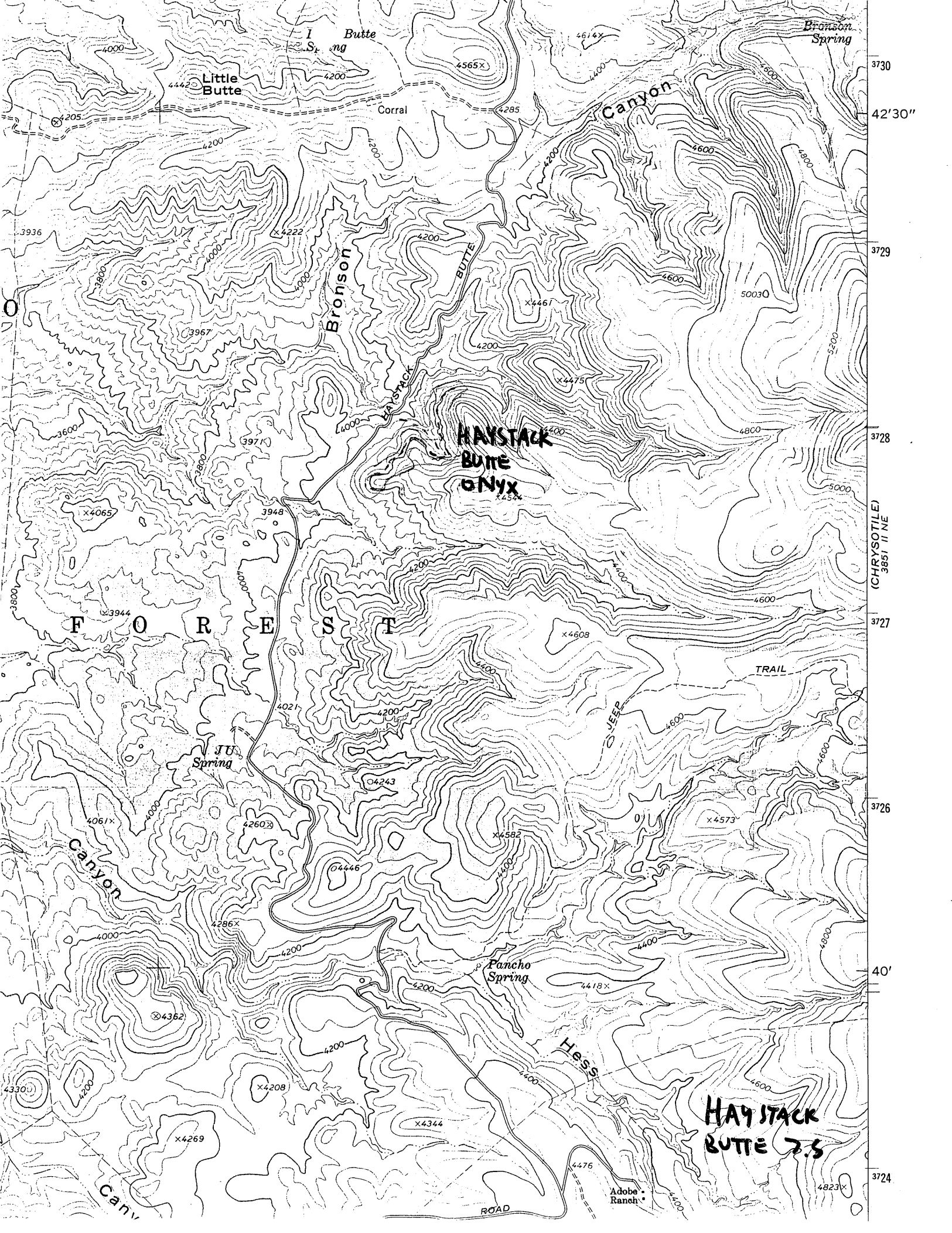
CURRENT STATUS: PAST PRODUCER

COMMODITY:

STONE DIMENSION
GEMSTONE ONYX

BIBLIOGRAPHY:

ADMMR HAYSTACK BUTTE ONYX FILE
LEGAL DESCRIPTION IS PROTRACTED ALSO IN S. 15



HAYSTACK BUTTE ONYX MINE

GILA COUNTY

Present Owners: Joseph C. Kostolnik, 650 N. 1st Ave. (253-1731)
Residence: 1538 E. Earll Drive, Phoenix (265-8375)

Carl Lunenschloss, Carl's Rock & Gem Shop
2814 N. 7th Ave., Phoenix (264-4538)

Memo LAS 6-2-66

Conference with Harry Mick - Apache Stone & Supply Co.

According to Harry Mick, Joseph C. Kostolnik, 650 N. 1st Ave., (253-1731) or at 1538 E. Earll Dr., (265-8375) and a partner now own the Haystack Butte Onyx deposit which is $4\frac{1}{2}$ miles west of the Chrysotile Asbestos Mine, owned by D.W. Jaquays & Co. It is reached by following up Seven Mile Creek from Highway 60.

LAS 6-2-66

DEPARTMENT OF MINERAL RESOURCES

STATE OF ARIZONA

FIELD ENGINEERS REPORT

| | | | |
|----------|--|----------|----------------|
| Mine | Haystack Onyx Mine | Date | Sept. 26, 1961 |
| District | Richmond Basin - Gila County | Engineer | Lewis A. Smith |
| Subject: | Interview with Harry Mick - Apache Building Rock, Inc. | | |

Mr. Mick reported that difficulty had been encountered in obtaining large blocks of the onyx because it is fairly soft. It is planned to wedge out blocks without using powder. The material is now being cut into small art objects, etc.

HAYSTACK BUTTE ONYX

GILA COUNTY

Active Mine List Feb. 1961 - Indian Bldg. Stone Co., Inc., 227 N. 44th St., Phoenix.

Not active June 1961 - LP

DEPARTMENT OF MINERAL RESOURCES

STATE OF ARIZONA

FIELD ENGINEERS REPORT

Mine Haystack Butte Onyx

Date September 9, 1960

District Richmond Basin District, Gila County

Engineer Lewis A. Smith

Subject: Interview with M. D. Baine, Jr.

Young

Location: 27 miles NE of Globe (Globe to Seven Mile Creek along ~~xxxx~~ Highway and thence 10 miles north, a total distance of 27 miles) (unsurveyed area).

Owner: Joseph C. Kostolnik, 650 N. 1st Ave., Phoenix.

Oper. + Owners: Multi-onyx Stone Company, 227 N 44th Street, Phoenix. , BR 3-0402

M. D. Baine, Jr. (CR 9-6995) and R. B. Kiser (AM 5-3622)

Lessee: R. B. Kiser, 227 N. 44th Street, Phoenix, Ariz.

Property: 180 acres of ground in 12 claims filed both as placer and lode.

Work: Road building and stripping by bulldozer.

Minerals: Onyx and silver (stromeyerite (?))

Geology: An onyx deposit 1/4 mile long and 6-20 feet deep has been exposed. The extent of the bed into the mountain has not been determined. Part of the onyx is associated with serpentine which may infer that the onyx could have replaced limestone (probably the Mescal formation). The onyx is multicolored and examples will be placed in the museum.

A plant to cut 20 tons with a 3 foot diamond saw is now being set up. It is hoped to obtain a gangue saw which will slab 4 x 6 foot slabs. Engineers have estimated 500,000 tons of material is now exposed.