



## **CONTACT INFORMATION**

Mining Records Curator  
Arizona Geological Survey  
1520 West Adams St.  
Phoenix, AZ 85007  
602-771-1601  
<http://www.azgs.az.gov>  
[inquiries@azgs.az.gov](mailto:inquiries@azgs.az.gov)

The following file is part of the

Arizona Department of Mines and Mineral Resources Mining Collection

## **ACCESS STATEMENT**

These digitized collections are accessible for purposes of education and research. We have indicated what we know about copyright and rights of privacy, publicity, or trademark. Due to the nature of archival collections, we are not always able to identify this information. We are eager to hear from any rights owners, so that we may obtain accurate information. Upon request, we will remove material from public view while we address a rights issue.

## **CONSTRAINTS STATEMENT**

The Arizona Geological Survey does not claim to control all rights for all materials in its collection. These rights include, but are not limited to: copyright, privacy rights, and cultural protection rights. The User hereby assumes all responsibility for obtaining any rights to use the material in excess of "fair use."

The Survey makes no intellectual property claims to the products created by individual authors in the manuscript collections, except when the author deeded those rights to the Survey or when those authors were employed by the State of Arizona and created intellectual products as a function of their official duties. The Survey does maintain property rights to the physical and digital representations of the works.

## **QUALITY STATEMENT**

The Arizona Geological Survey is not responsible for the accuracy of the records, information, or opinions that may be contained in the files. The Survey collects, catalogs, and archives data on mineral properties regardless of its views of the veracity or accuracy of those data.

PRINTED: 08/29/2001

ARIZONA DEPARTMENT OF MINES AND MINERAL RESOURCES AZMILS DATA

PRIMARY NAME: HAVASU #1

ALTERNATE NAMES:

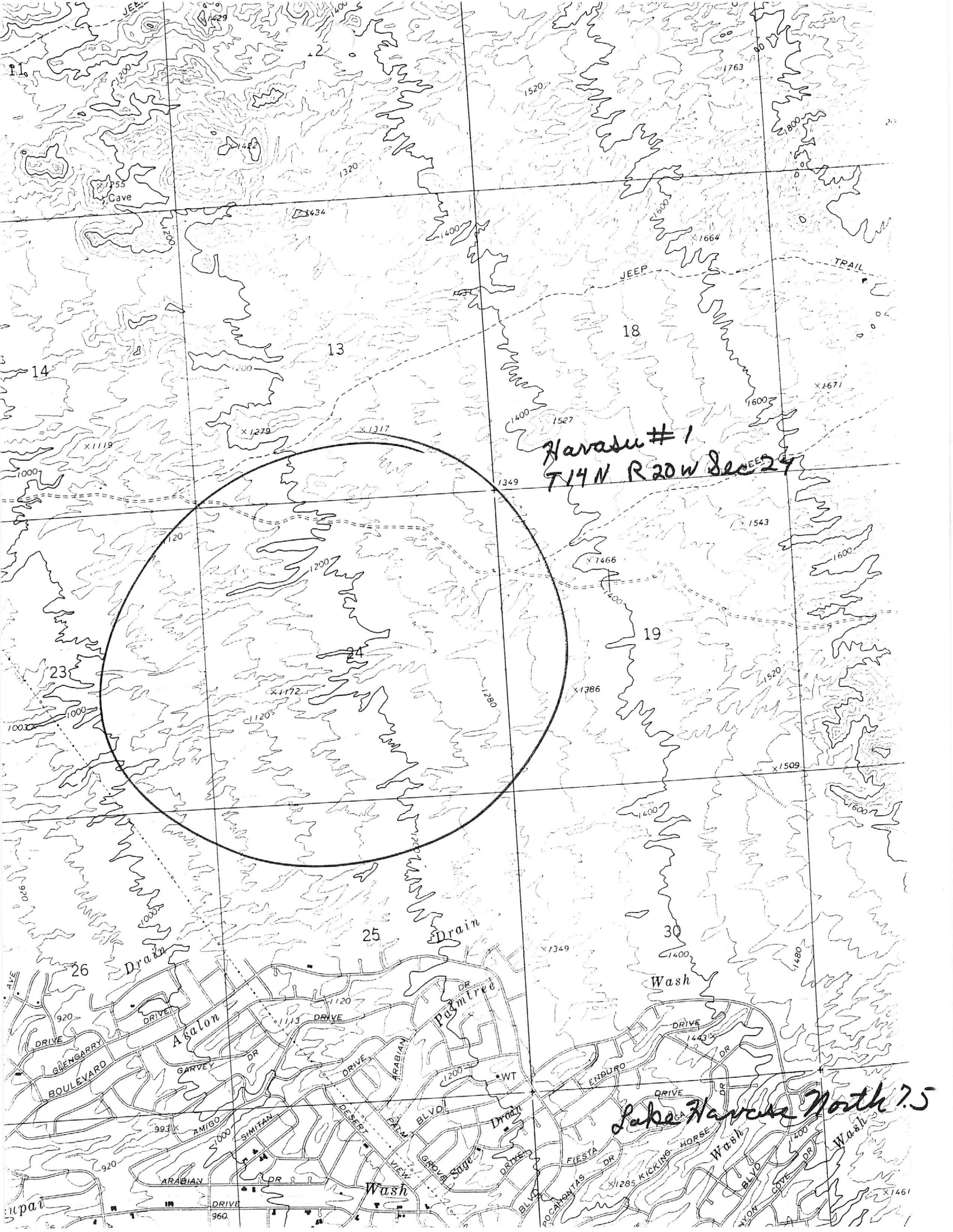
MOHAVE COUNTY MILS NUMBER: 729

LOCATION: TOWNSHIP 14 N RANGE 20 W SECTION 24 QUARTER C  
LATITUDE: N 34DEG 32MIN 20SEC LONGITUDE: W 114DEG 18MIN 25SEC  
TOPO MAP NAME: LAKE HAVASU CITY N - 7.5 MIN

CURRENT STATUS: UNKNOWN

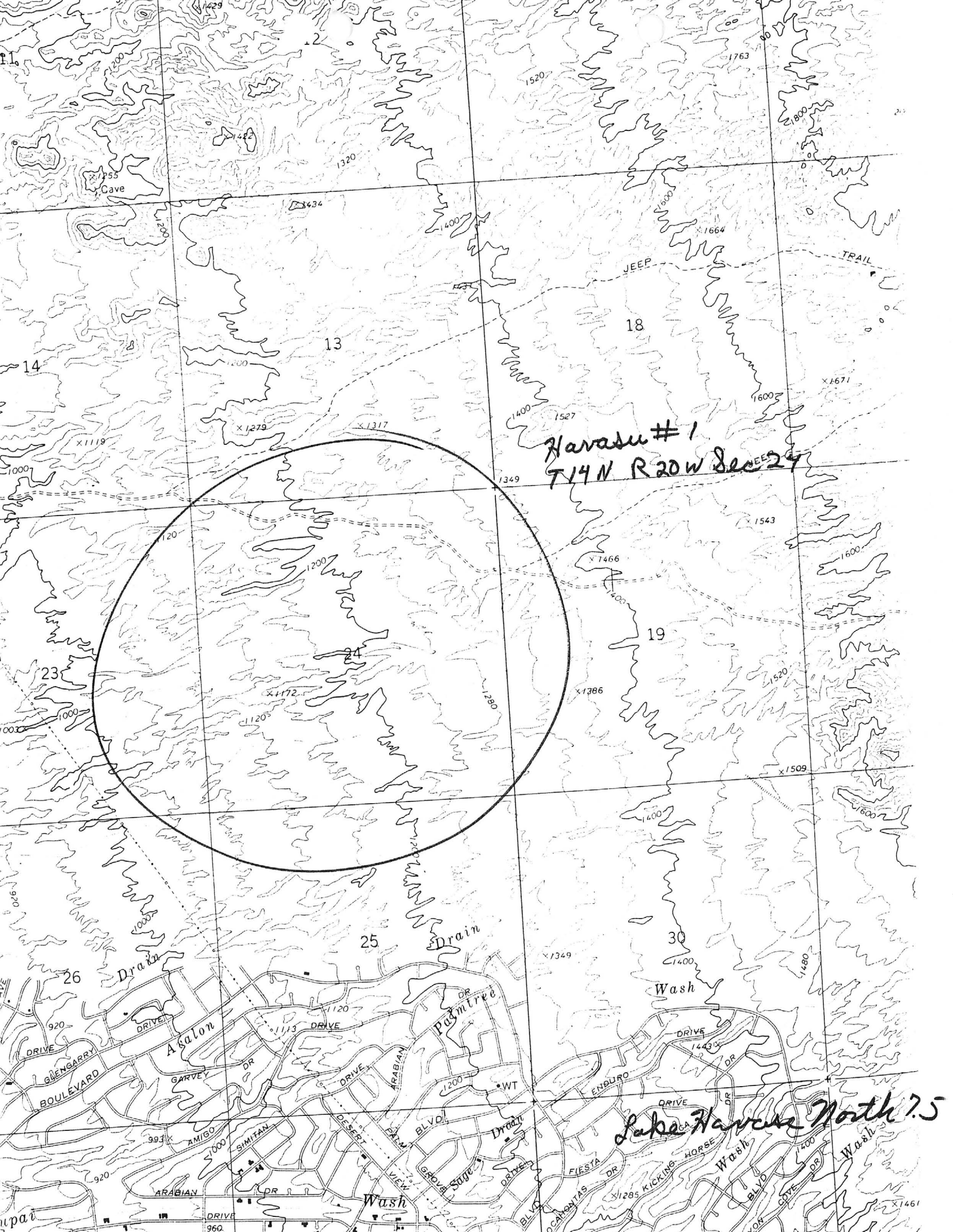
COMMODITY:  
UNKNOWN

BIBLIOGRAPHY:  
ADMMR HAVASU #1 FILE



Harasu # 1  
T14N R20W Sec 24

Lake Harasu North 7.5



HAVASU # 1

MOHAVE COUNTY

8/8/84 letter to the State Mine Inspector" They have for approximately two years been in a testing period. They have used various milling and screening equipment. They have a pilot plant which employes 3 - and security employes 5. During the period of testing the mine has opened and closed frequently.

---

NJN WR 8/10/84: John Allison, 1790 Bahama Avenue, Lake Havasu City, Az. 86403, ph: 602-453-6787 visited. He reported they are getting leases on property in T14N R20W of Mohave County. They hope to put some type of precious metal operation into production during the fall of 1984.

---

RRB WR 8/17/84: A caller reported that the Cliffdale Corp. is seeking investors for a placer operation which is supposedly producing in Sec 24, T14N R20W, Mohave County. State Land Dept. reports that they had a prospecting permit on Sec 24 and have applied for a mineral lease on 160 acres.

---

2/2

Information for Arizona Department of Mines and Mineral Resources Mine Files

VERBAL INFORMATION SUMMARY

File Name	<u>Havasu # 1</u>
AZMILS Primary Name	<u>Havasu # 1</u>
AZMILS County and AZMILS No.	<u>Mohave 729</u>

**SOURCE:** Dave Taylor, BLM Lake Havasu Field Office

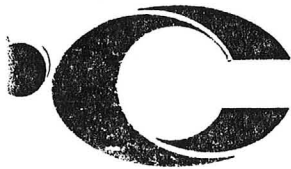
**ABOUT:** John Allison and the Havasu # 1 Property in Mohave County

**DATE:** November 4, 1999

**PHONE:**

**INFORMATION**

Activity in western Arizona on BLM administered land was discussed with Dave Taylor of the above office. He said that John Allison (card), previous promoter of the Havasu #1 (file) placer is again trying to develop the property. He will be required to post a bond for any work other than casual because of previous non-compliance.



**CLIFFDALE  
CORPORATION**

**John P. Allison**  
Executive Vice-President

1790 Bahama Avenue  
Suite B  
Lake Havasu City,  
Arizona 86403  
(602) 453-6787

*Havasus #1 (f)  
Hokawa Co*

*Joe  
68129151*

**STATE MINE INSPECTOR  
SEP 26 1986**

September 22, 1986

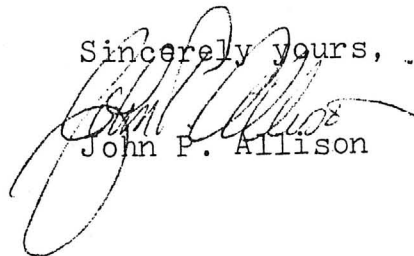
Office of the State Mine Inspector  
705 West Wing  
Capitol Building  
Phoenix, Arizona 85007

Dear Mine Inspectors Office:

Cliffdale is pleased to inform you that our mine, Havasu #1, will reopen on September 22, 1986. The entire plant will not be in operation until October 15, 1986, however, sampling crews and maintenance men are working on site.

If you have any questions concerning the above information, please don't hesitate to contact me.

Sincerely yours,



John P. Allison

JPA/laa

cc: Mine Inspectors File  
DCS, ICT

STATE MINE INSPECTOR

JAN 28 1985



**CLIFFDALE  
CORPORATION**

**John P. Allison**  
Executive Vice-President

January 24, 1985

State Mine Inspector's Office  
Attention: Joe Ramirez  
705 Capitol Tower  
Phoenix, Arizona 85007

Dear Mine Inspector's Office:

Re:

Mine name: Havasu # 1  
Section 24  
Range 20 West  
Township 14 North  
Mohave County, Arizona

NEW FILE

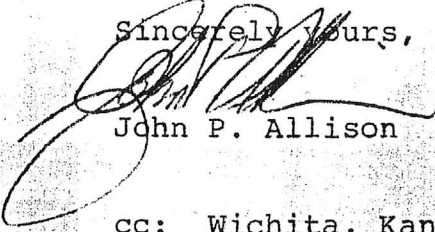
The State of Arizona granted us a Mineral Lease on the above property, January 18, 1985. At this time, the bonds are being posted and we are within a few weeks of beginning full scale operations.

This is our official notification of construction. A notice will be issued to your office when construction is completed and operations begin.

Please inform Joe Ramirez that our mobile telephone hasn't arrived yet. We have the papers to prove proof of purchase and ask for his understanding with this very difficult situation.

Thanking you in advance,

Sincerely yours,

  
John P. Allison

cc: Wichita, Kansas  
Havasu file

JPA/laa

1790 Bahama Avenue  
Suite B  
Lake Havasu City,  
Arizona 86403  
(602) 453-6787